

Assembly Instruction

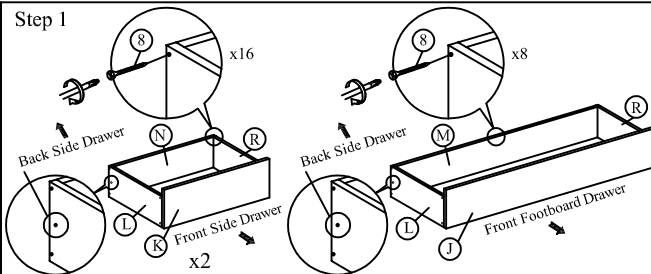
CF 9326
(5' QUEEN)

A		Headboard	1pc
B		Footboard	1pc
C		Side Rail	2pcs
D		Headboard Legs 700 x 80 x 20mm	2pcs
E		Footboard Side Legs 80 x 35 x 50(40)	2pcs
F		Center Rail 1930mm	1pc
G		14pcs Slat 1537mm	1pc
H		Support Legs 265mm	3pcs
I		Side Rail Support Legs 265 x 65 x 13mm	4pcs
J		Footboard Front Panel	1pc
K		Side Rail Front Panel	2pcs
(L)		Left Side Panel	3pcs
(R)		Right Side Panel	3pcs
M		Footboard Back Panel	1pc
N		Side Rail Back Panel	2pcs
O		Footboard Bottom Panel	1pc
P		Side Rail Bottom Panel	2pcs
Q		Bottom Panel Big Support Wood	7pcs
S		Bottom Panel Small Support Wood	4pcs

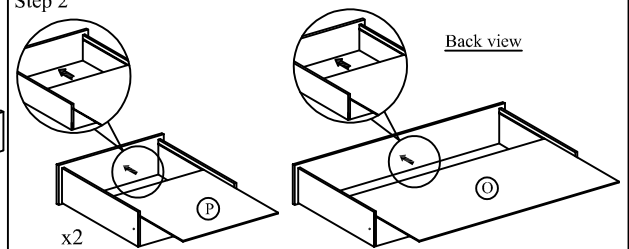
HARDWARE

1		3pcs
2		8pcs
3		1pc
4		1pc
5		62pcs
6		12pcs
7		44pcs
8		24pcs
9		6pcs
10		3pcs
11		8pcs
12		6pcs
13		14pcs
14		8pcs
15		3pcs

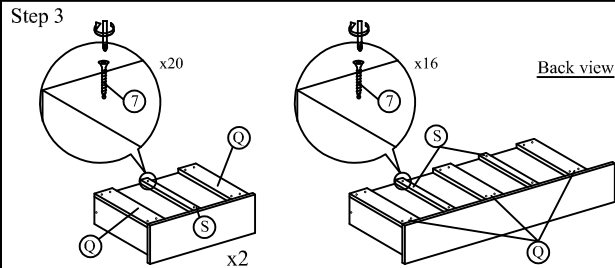
Step 1



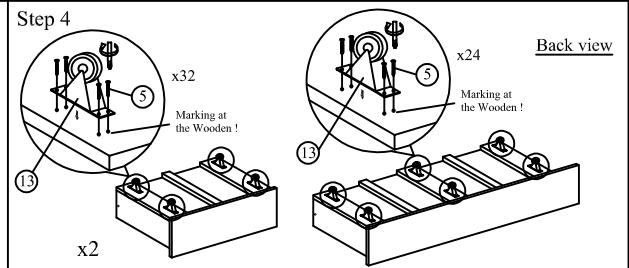
Step 2



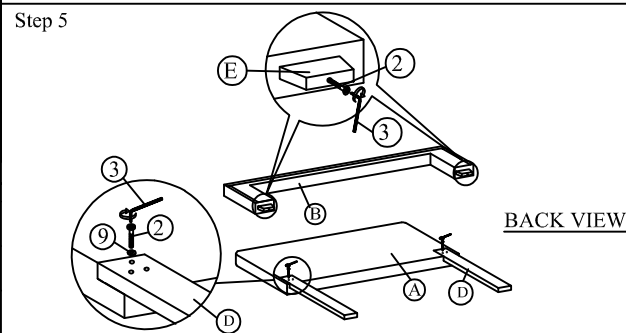
Step 3



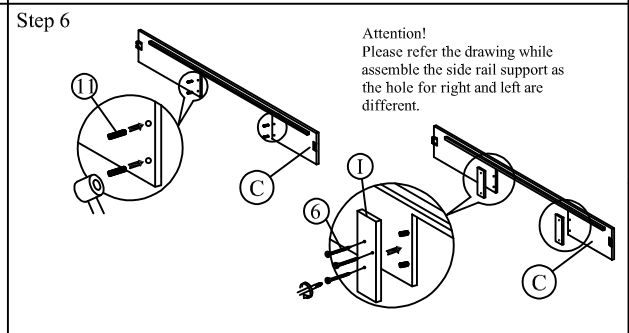
Step 4



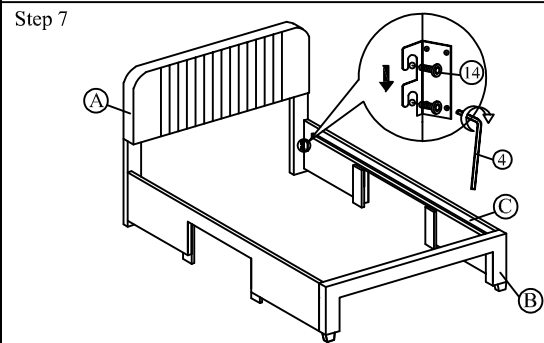
Step 5



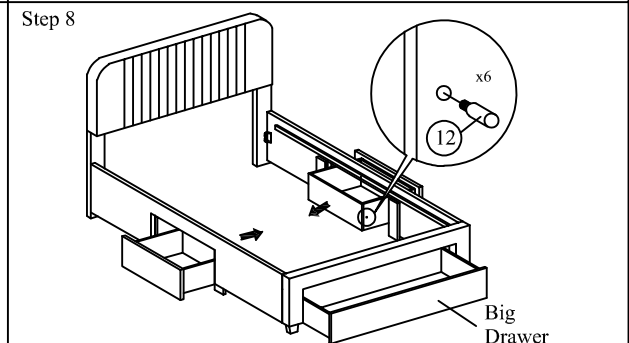
Step 6



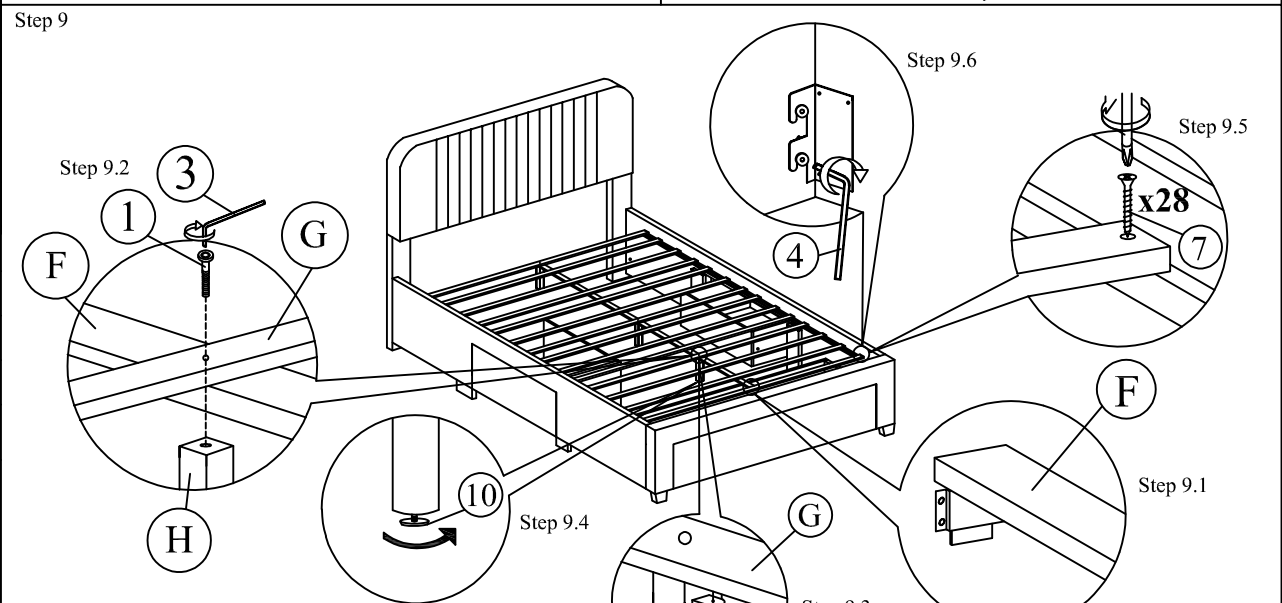
Step 7



Step 8



Step 9



Remark

- Please lift up the foot end gently to straighten the bed.
- Tighten screws on one side of side rail only.
- Side rail is flexible please push on the center parts of the side rail gently then tighten the screw on side rail immediately. If necessary you may need to push the centre of side rail and pull the slat gently toward you all at the same time which will close the gap.
- Tighten all the screws, including screws on the centre rail.
- Recheck and ensure Part 10 adjuster touches the floor. Do this by turning to extend adjuster. Please do not under or over extend the adjuster once it reaches the floor.
- DO NOT drag the bed, please lift the bed up first then moving to avoid center support leg and bed feet crack and break!!