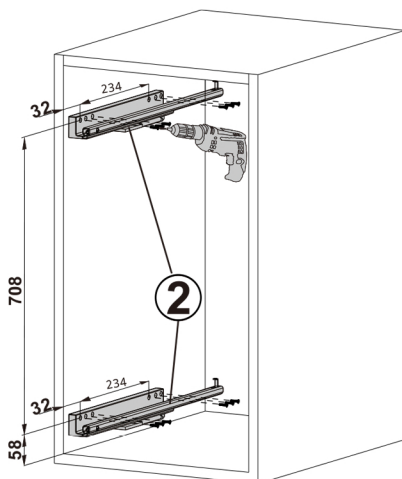


*This manual shows left side installation. Right side is symmetrical.*

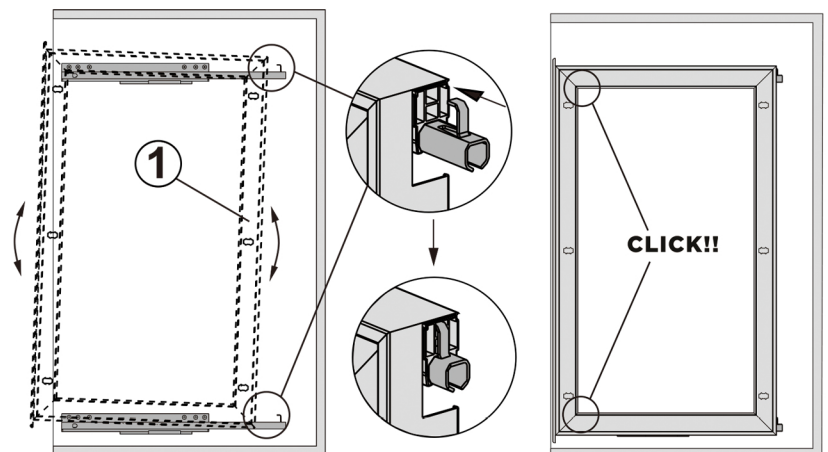
## Illustration for Drilling

- 1** Drill holes and install the slide rails using 12pcs of ST 3.5\*20 screws.



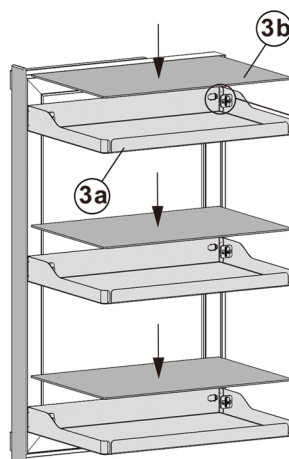
## Frame Assembly

- 2** Tilt the frame. Ensure that the back of the frame clicks with the slider hooks, then press downward.



## Tray Assembly

- 3** Place the trays and tray pads.



**3.1.** Place and align each tray to the frame

**3.2.** Secure the tray by rotating the locking bracket clockwise

