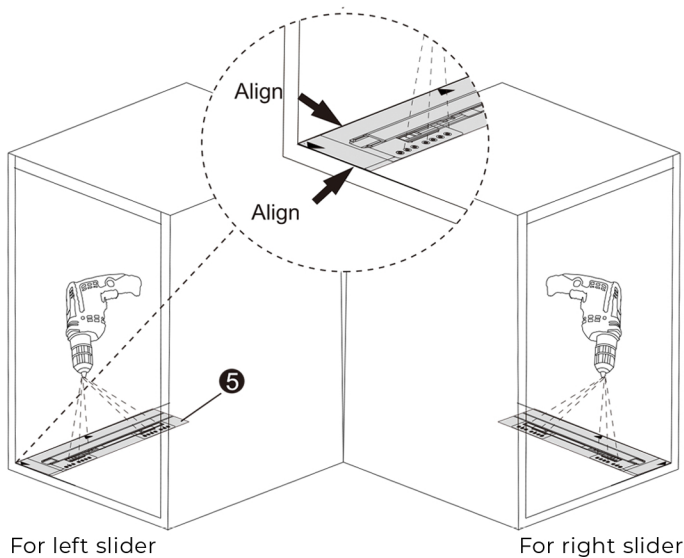
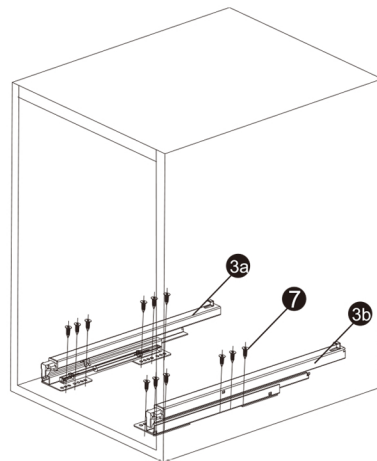


- 1** Drill holes (12 x $\varnothing 2.5\text{mm}$) on the cabinet floor using the drilling template for sliders.

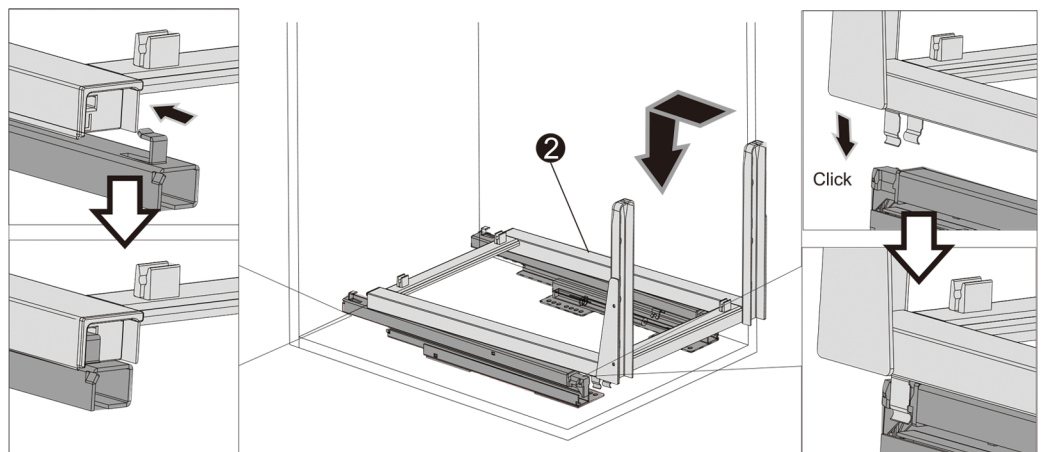


- 2** Install the sliders and affix onto the cabinet floor using 12x screws.

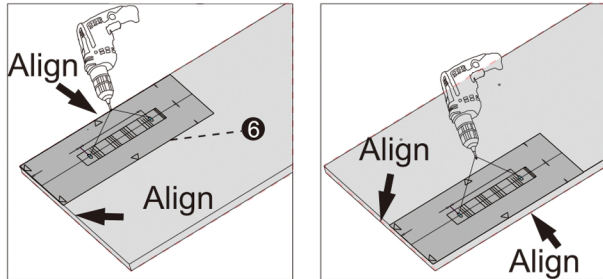


- 3** Install the base plate on the sliders.

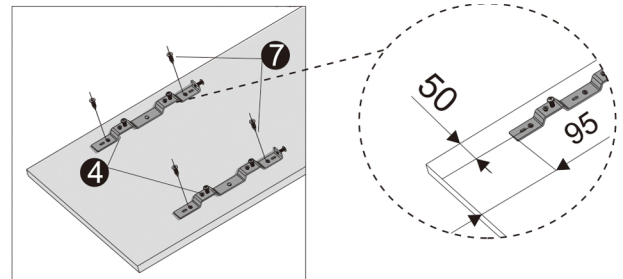
- 3.1. Insert the hooks located at the back part of the sliders.
- 3.2. Push the front part of the base plate until the connecting brackets "click".



- 4** Drill holes (4 x $\varnothing 2.5\text{mm}$) on the door panel using the drilling template for door fittings.

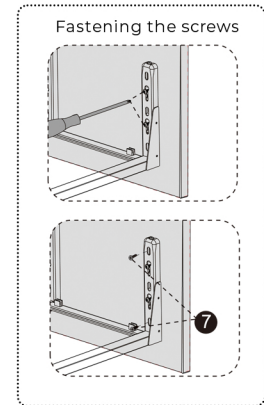
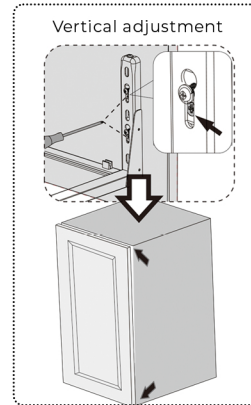
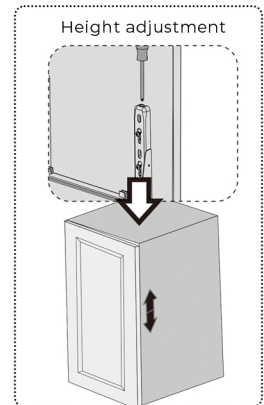
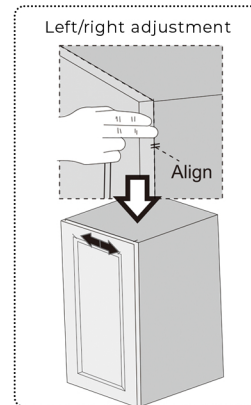
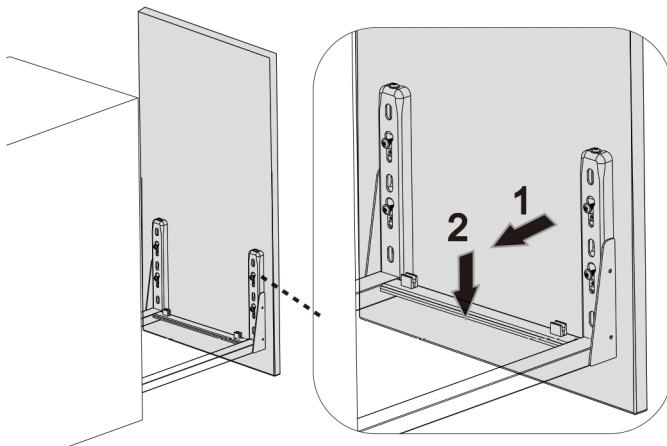


- 5** Install the door fittings and affix onto the door panel using 4x screws.



- 6** Pre-affix the base plate to the door panel.

Align the door to the cabinet by adjusting it on both sides, the height, and vertically before fastening the screws.



- 7** Install the frame and bin unit onto the base plate using the plastic fitting.

