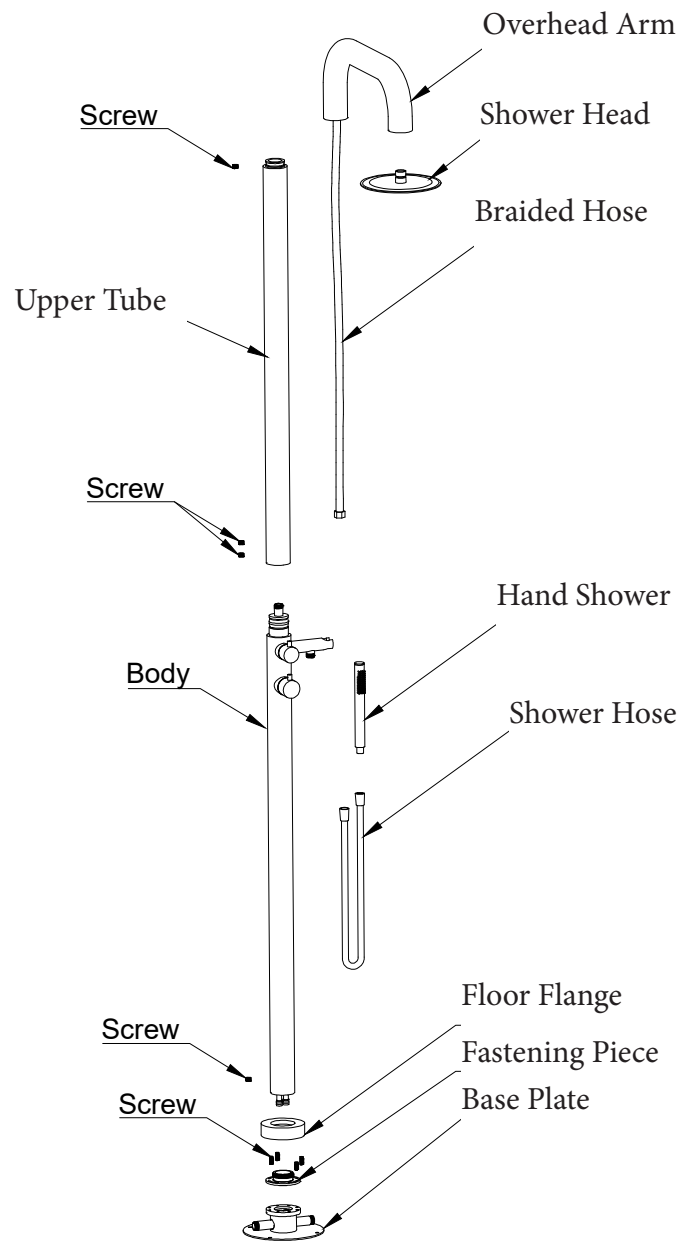
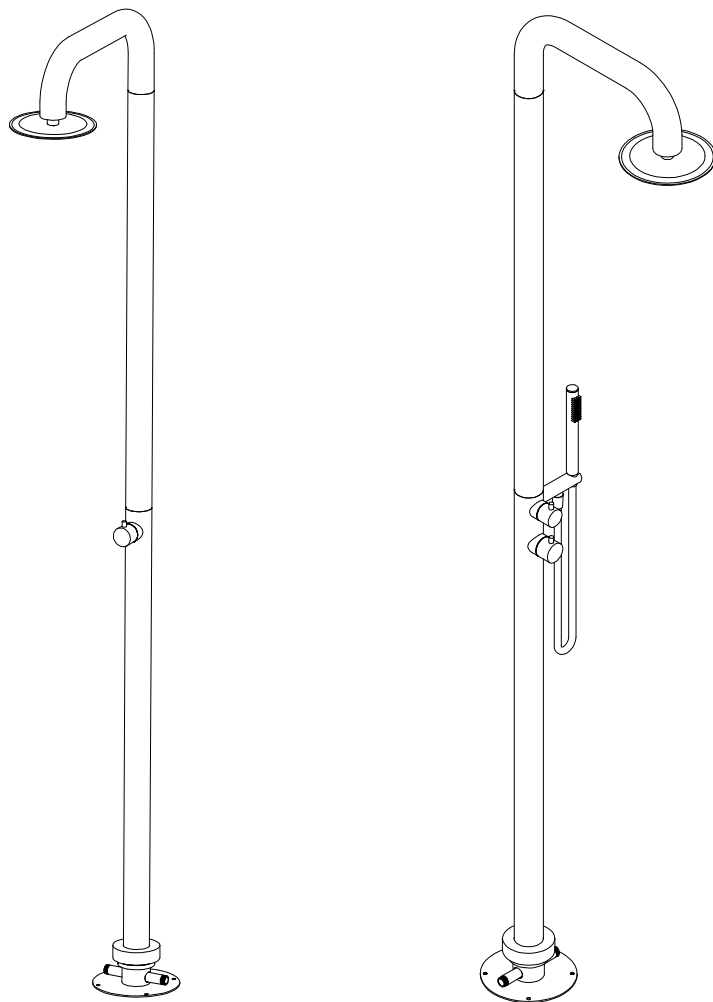


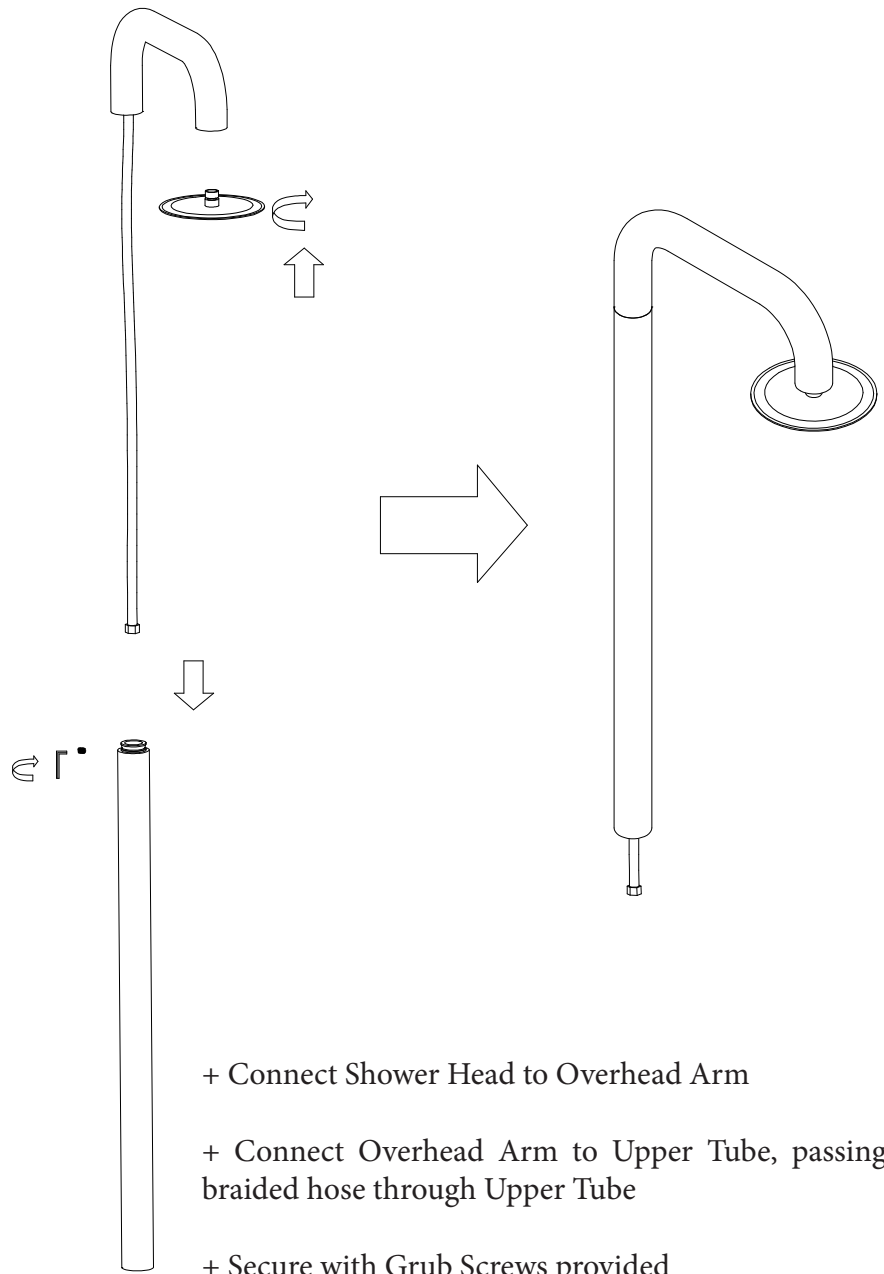
Installation Instruction

FREE STANDING TWIN SHOWER



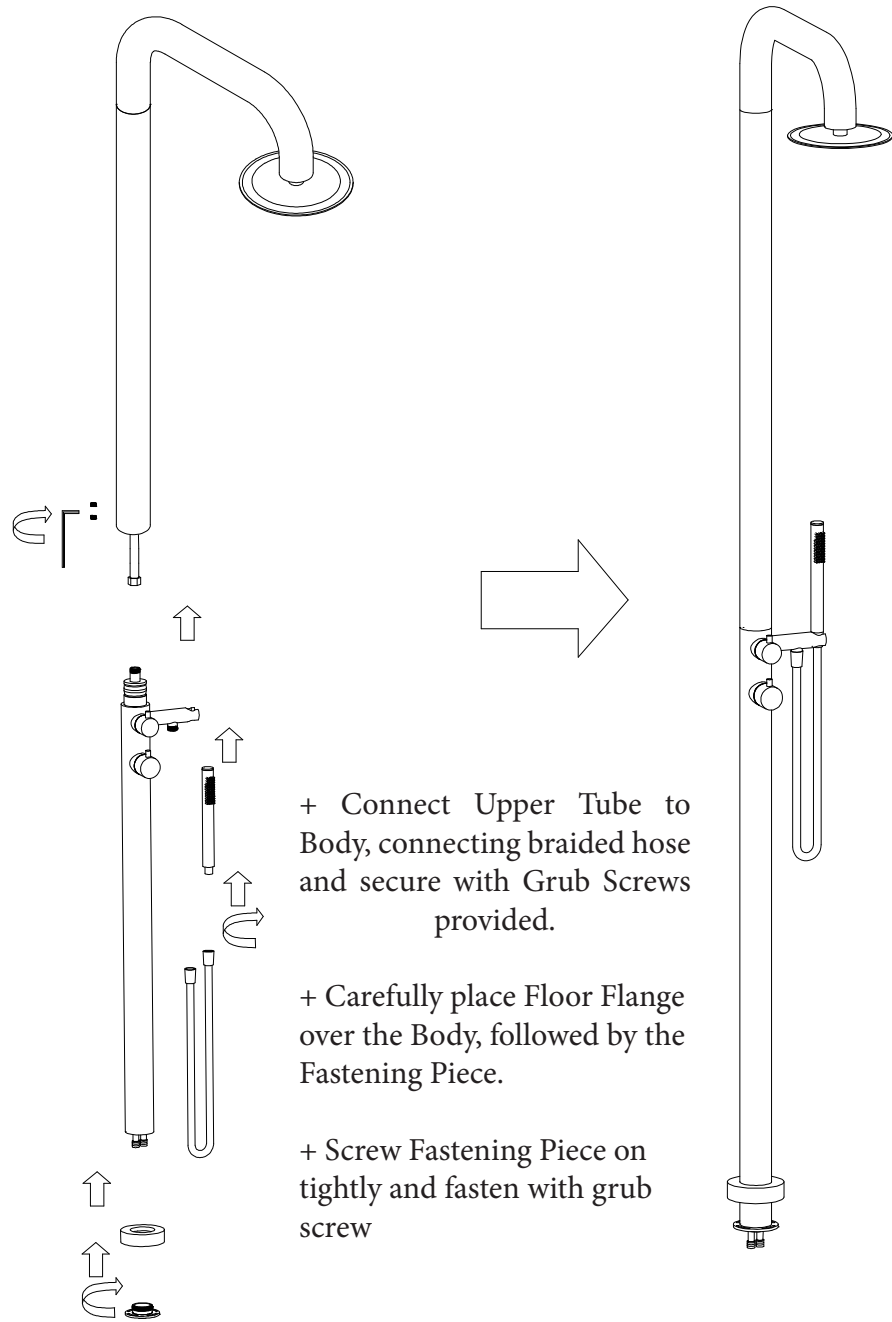
Linkware highly recommends reading through all instructions prior to installation

Step ①



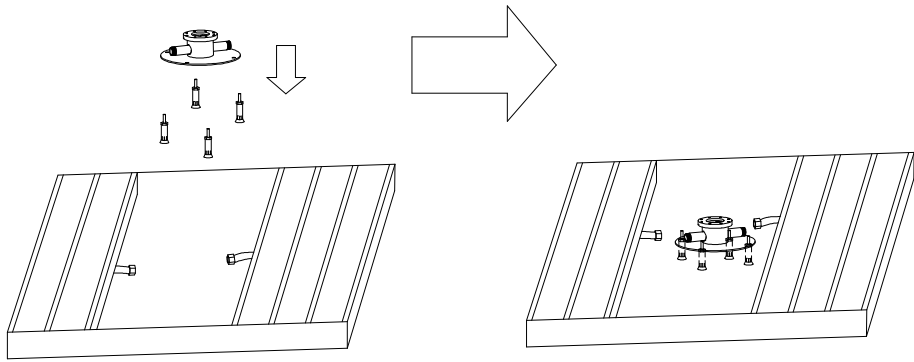
- + Connect Shower Head to Overhead Arm
- + Connect Overhead Arm to Upper Tube, passing braided hose through Upper Tube
- + Secure with Grub Screws provided

Step ②



- + Connect Upper Tube to Body, connecting braided hose and secure with Grub Screws provided.
- + Carefully place Floor Flange over the Body, followed by the Fastening Piece.
- + Screw Fastening Piece on tightly and fasten with grub screw

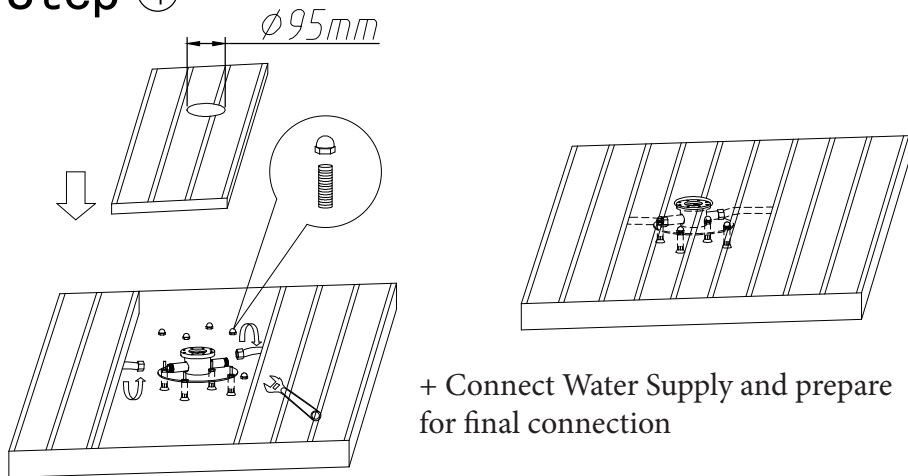
Step ③



Secure Base Plate in position

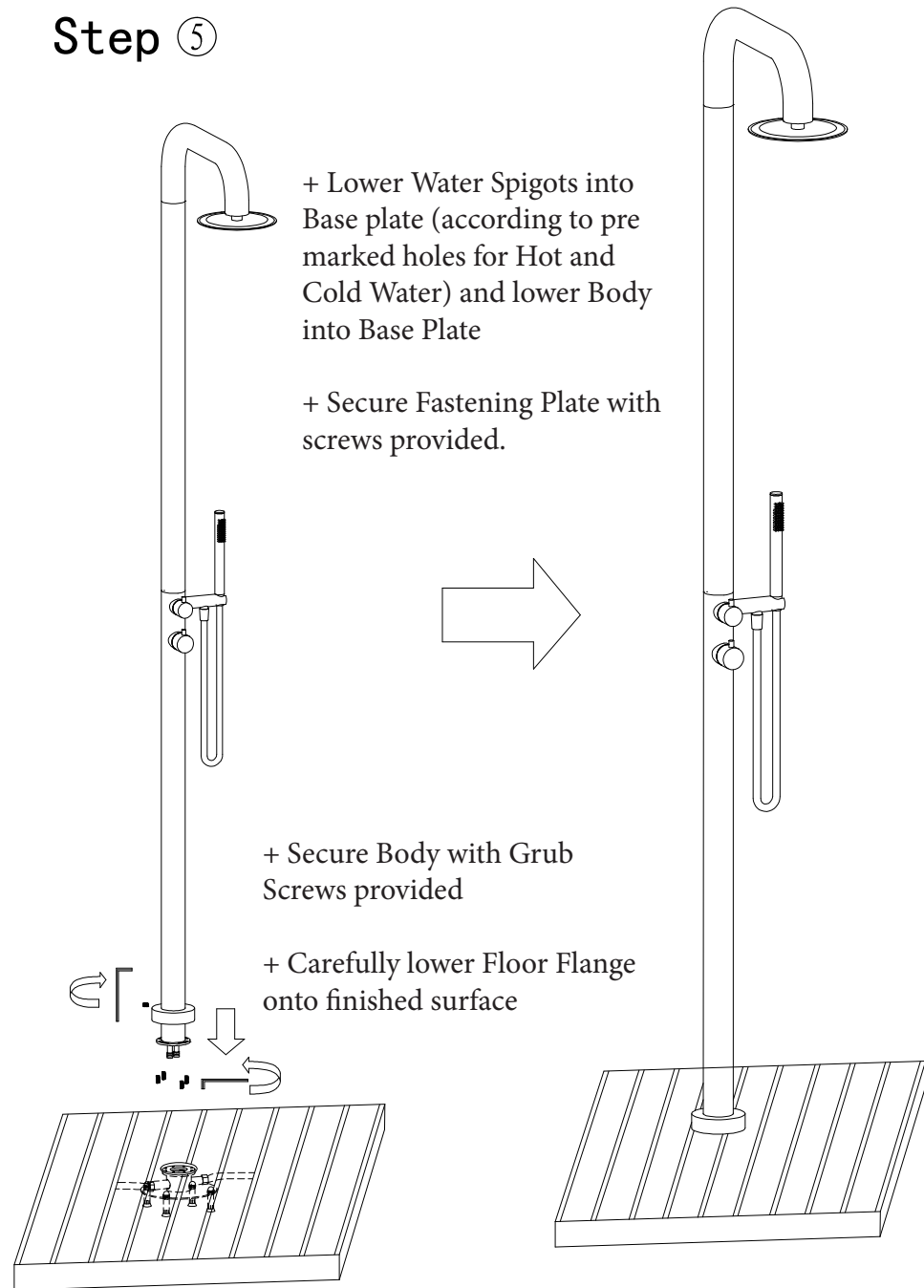
REFER TO WRITTEN INSTALLATION INSTRUCTIONS BELOW

Step ④



+ Connect Water Supply and prepare for final connection

Step ⑤



+ Lower Water Spigots into Base plate (according to pre marked holes for Hot and Cold Water) and lower Body into Base Plate

+ Secure Fastening Plate with screws provided.

+ Secure Body with Grub Screws provided

+ Carefully lower Floor Flange onto finished surface

IMPORTANT FIXING INSTRUCTIONS

1. Select location of shower away from obstructions – shower is 2320mm in height.
2. Concrete or pave a level area min 400mm diameter or greater to mount the shower Base Plate.
Note: Pavers must be bedded in concrete to provide weight and stability.
3. **NB: Identify and mark** external Hot / Cold water inlets on base plate subject to Hot/Cold inlet spigot placement on shower.

The minimum distance required from the bottom of Base Plate to Finished Floor Level is 80mm.
4. Once concrete is set, position Shower in the required position. Mark and drill holes and fit supplied Dynabolts.
5. Ensure Base Plate is secured level in all directions using center bubble on leveling cap.
6. Fully assemble shower according to diagram.
7. Floor Flange must be handled carefully when adjusting to avoid damage to finishes. Damage or displacement of internal O-Ring in Floor Flange will cause scratching.
8. Remove the leveling cap from Base Plate.
9. Remove Hot and Cold Plugs from Base Plate.
10. Insert shower carefully to Base Plate according to Hot/Cold Inlet position set up.
11. Secure shower Fastening Piece to Base Plate using provided screws.
12. **Carefully** slide Floor Flange to Finished Floor Level.