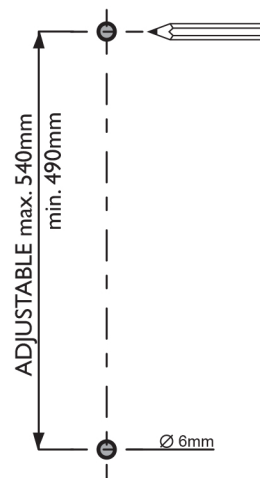
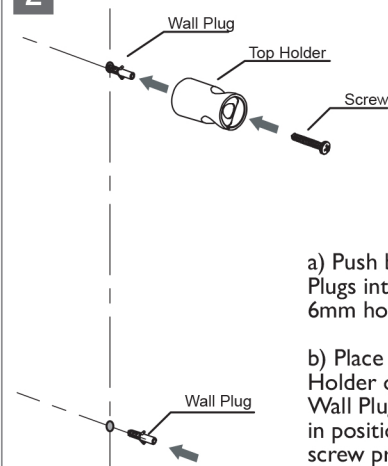


1

- Measure and mark desired mounting positions.
- Drill mounting holes with 6mm drill bit.

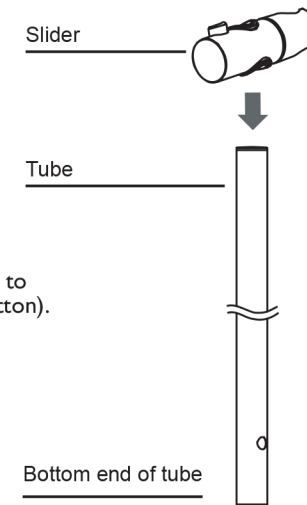


2



- Push both Wall Plugs into each 6mm hole.
- Place top Holder over top Wall Plug and fix in position with screw provided.

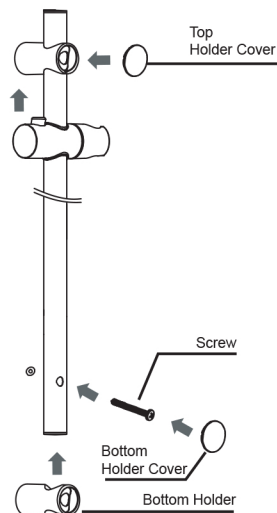
3



Place Slider on to tube (press button).

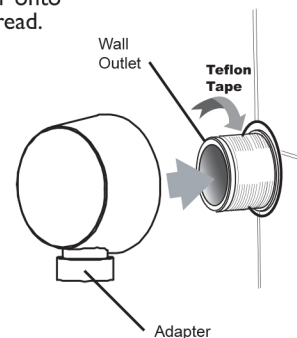
4

- Slide the Tube into top Holder. Then fit Bottom Holder over tube and fix in place with screw into wall plug.
- Push Holder covers onto Holders



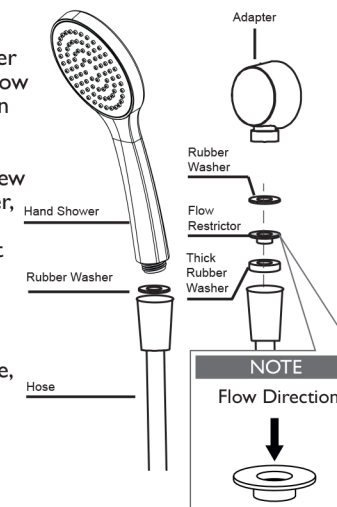
5

- Apply teflon tape to Water Outlet thread.
- Fasten Adaptor onto Water Outlet thread.



6

- Ensure Rubber Washers and Flow Restrictor are in place as shown.
- Carefully screw Hose to Adapter, ensuring flow restrictor is not damaged in the process.
- Screw Hand Shower to Hose, tighten firmly.



recommended
working pressure
**150-500
KPa**
maximum hot
water temperature
**75
degrees**