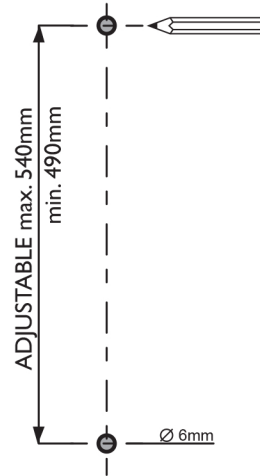
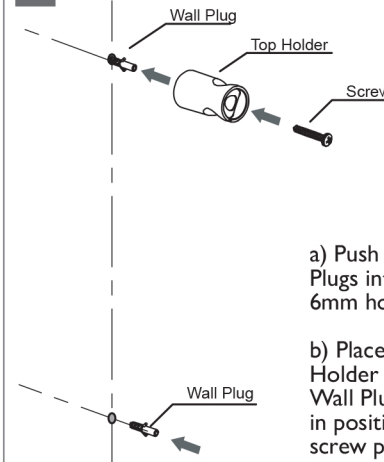


1

- a) Measure and mark desired mounting positions.
- b) Drill mounting holes with 6mm drill bit.

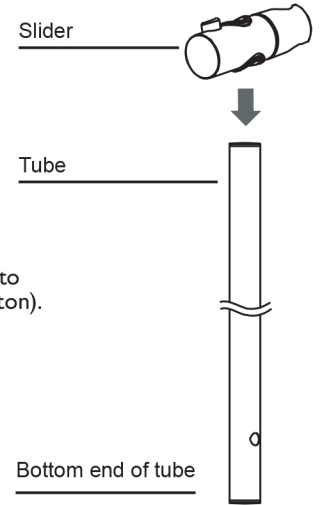


2



- a) Push both Wall Plugs into each 6mm hole.
- b) Place top Holder over top Wall Plug and fix in position with screw provided.

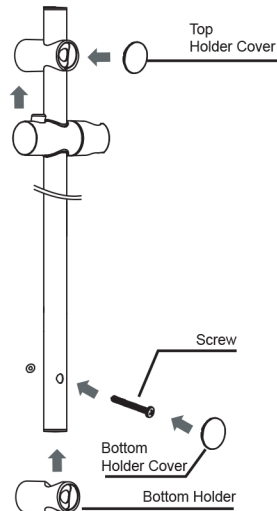
3



Place Slider on to tube (press button).

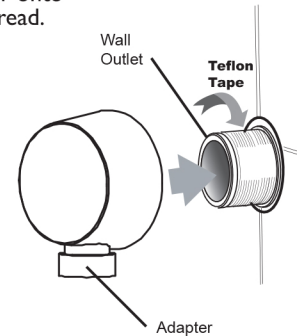
4

- a) Slide the Tube into top Holder. Then fit Bottom Holder over tube and fix in place with screw into wall plug.
- b) Push Holder covers onto Holders



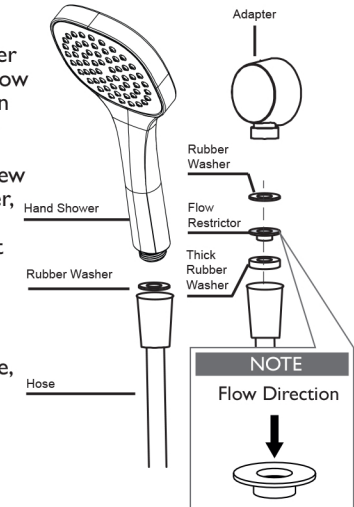
5

- a) Apply teflon tape to Water Outlet thread.
- b) Fasten Adaptor onto Water Outlet thread.

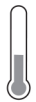


6

- a) Ensure Rubber Washers and Flow Restrictor are in place as shown.
- b) Carefully screw Hose to Adapter, ensuring flow restrictor is not damaged in the process.
- c) Screw Hand Shower to Hose, tighten firmly.



recommended working pressure
150-500 KPa



maximum hot water temperature
75 degrees