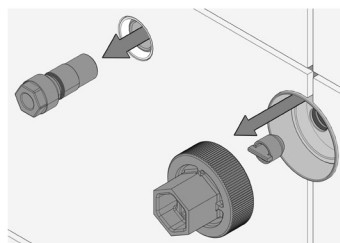


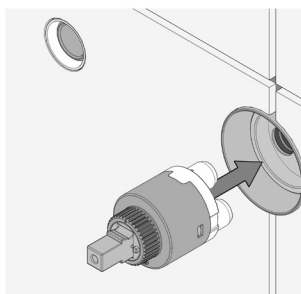
1



Remove Test Caps with a flat head screwdriver or spanner.

Ensure that no Test Plugs are in Body.

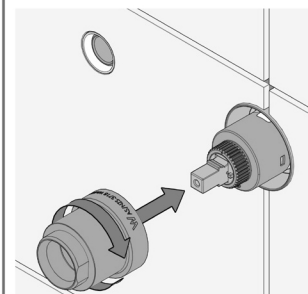
2



Add grease or soap to Cartridge Legs. Push Cartridge gently Into Body. Ensure correct orientation.

Cartridge only fits in one orientation.

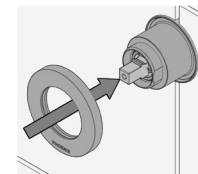
3



Fasten Cartridge Sleeve to Mixer Body using a shifting spanner.

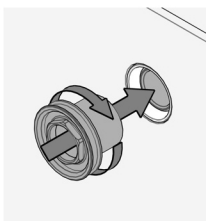
Do not over tighten.

4



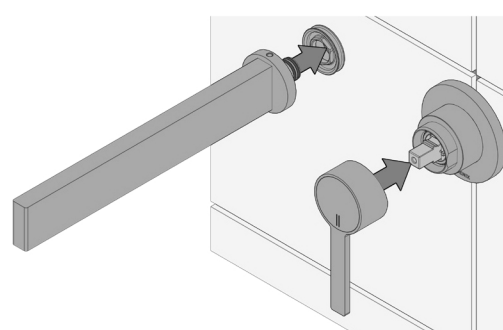
Gently push Dress Plate over Wall Mixer Sleeve.

5



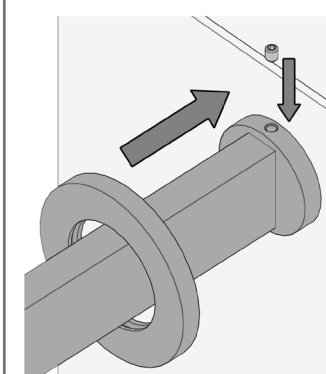
Fasten Spout Adaptor.

6



Push on Spout and Handle as shown.

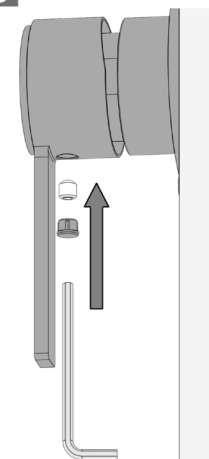
7



Tighten Grub Screw securing spout to adaptor.

Gently push Dress Plate over Spout.

8



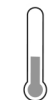
Fasten grub screws firmly.



recommended working pressure

150-500KPa

maximum hot water temperature



75 degrees