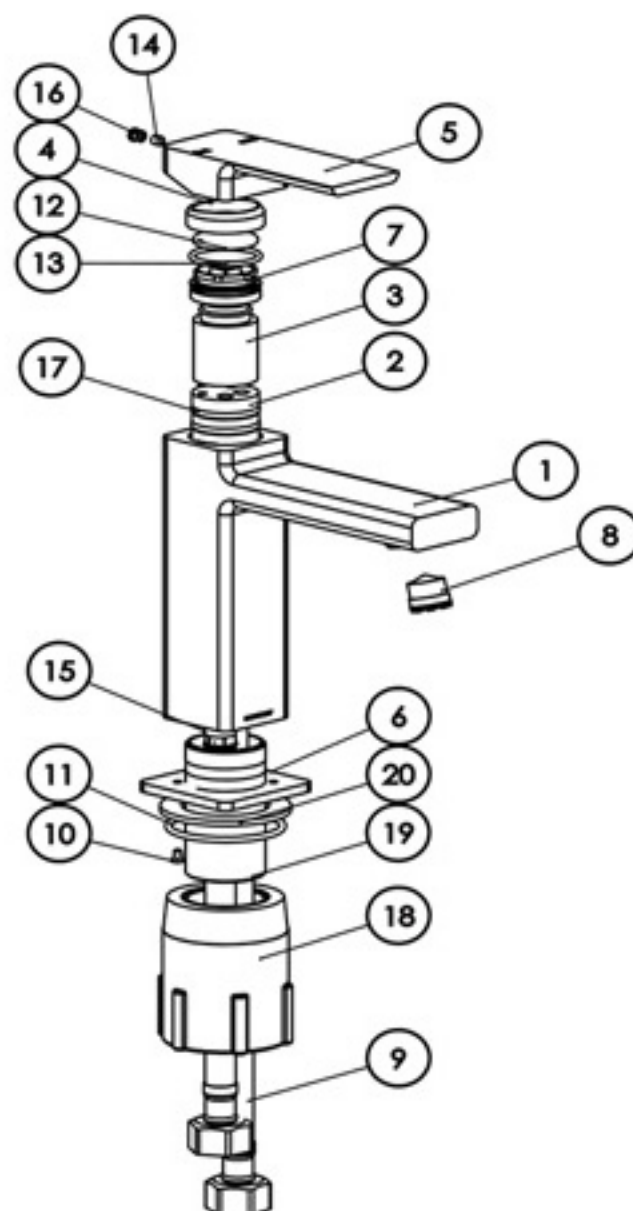


1. BASIN MIXER BODY
2. CARTRIDGE SEAT
3. 25MM CARTRIDGE
4. MIXER DOME
5. MIXER HANDLE
6. MIXER DRESS PLATE
7. MIXER LOCKNUT 25MM
8. AERATOR
9. FLEXI HOSE
10. SCREW
11. O-RING 43X2.5MM
12. O-RING 21X2.5MM
13. O-RING 25X2.0MM
14. GRUB SCREW M4X5MM
15. GRUB SCRW M4X6MM
16. SCREW CAP
17. O-RING 22X2.7MM
18. PLASTIC MIXER LOCKNUT
19. GASKET RETAINER
20. LOCKNUT GAS



MAINTENANCE AND CARE:

- All surfaces should be cleaned with mild liquid detergent or soap and water.
- Do not use cream cleaners or citrus based cleaning products, as they are abrasive.
- Use of unsuitable cleaning agents may damage the surface. Any damage caused in this way will not be covered by warranty.