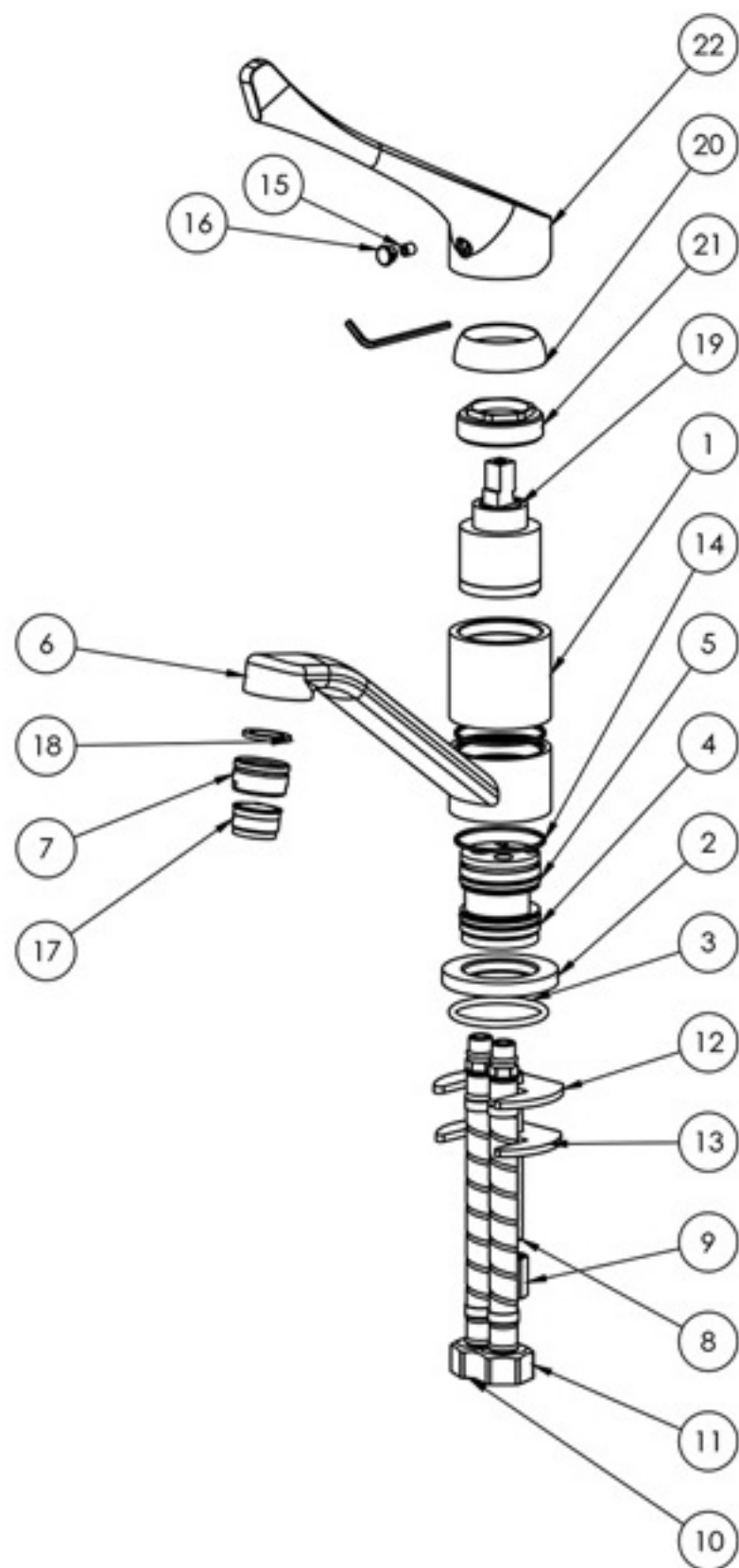


PARTS LIST

1. MIXER BODY
2. DRESS PLATE
3. O-RING 37X3MM
4. CARTRIDGE SEAT
5. MIXER SEAL
6. MIXER SPOUT
7. AERATOR HOUSING
8. THREADED ROD M8X75MM
9. THREADED NUT
10. FLEXIBLE HOSE 350MM HOT
11. FLEXIBLE HOSE 350MM COLD
12. RUBBER GASKET
13. FIXING PLATE
14. TEFLON BEARING
15. GRUB SCREW M5X6
16. SCREW CAP
17. AERATOR
18. AERATOR WASHER
19. 35MM CARTRIDGE
20. MIXER DOME
21. CARTRIDGE LOCKNUT
22. MIXER EXTENDED HANDLE



MAINTENANCE AND CARE:

- All surfaces should be cleaned with mild liquid detergent or soap and water.
- Do not use cream cleaners or citrus based cleaning products, as they are abrasive.
- Use of unsuitable cleaning agents may damage the surface. Any damage caused in this way will not be covered by warranty.