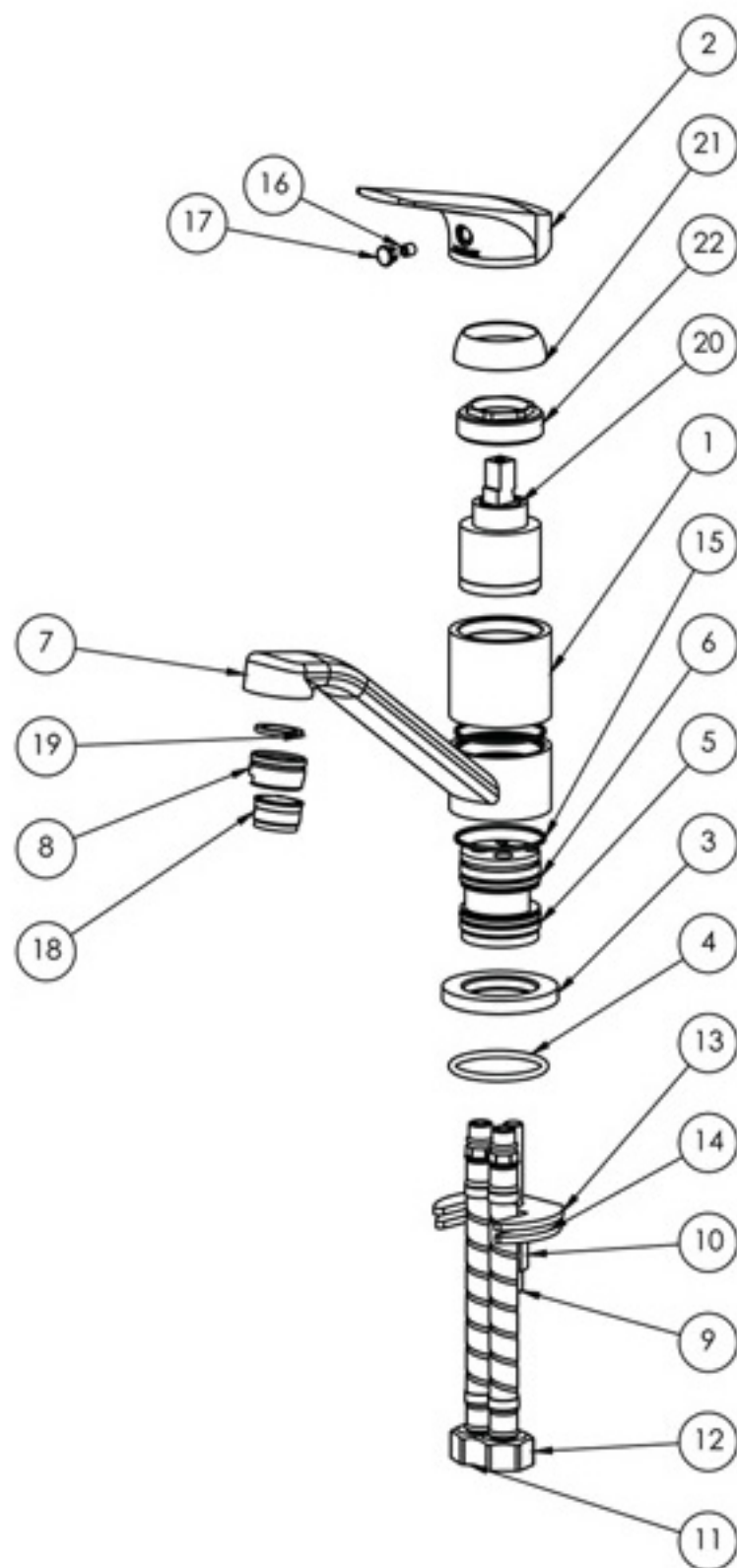


## PARTS LIST

1. MIXER BODY
2. MIXER HANDLE
3. DRESS PLATE
4. O-RING 37X3MM
5. CARTRIDGE SEAT
6. MIXER SEAL
7. MIXER SPOUT
8. AERATOR HOUSING
9. THREADED ROD M8X75MM
10. THREADED NUT
11. FLEXIBLE HOSE 450MM COLD
12. FLEXIBLE HOSE 450MM HOT
13. RUBBER GASKET
14. FIXING PLATE
15. TEFLON BEARING
16. GRUB SCREW M5X6
17. SCREW CAP
18. AERATOR
19. AERATOR WASHER
20. 35MM CARTRIDGE
21. MIXER DOME
22. CARTRIDGE LOCKNUT



## MAINTENANCE AND CARE:

- All surfaces should be cleaned with mild liquid detergent or soap and water.
- Do not use cream cleaners or citrus based cleaning products, as they are abrasive.
- Use of unsuitable cleaning agents may damage the surface. Any damage caused in this way will not be covered by warranty.