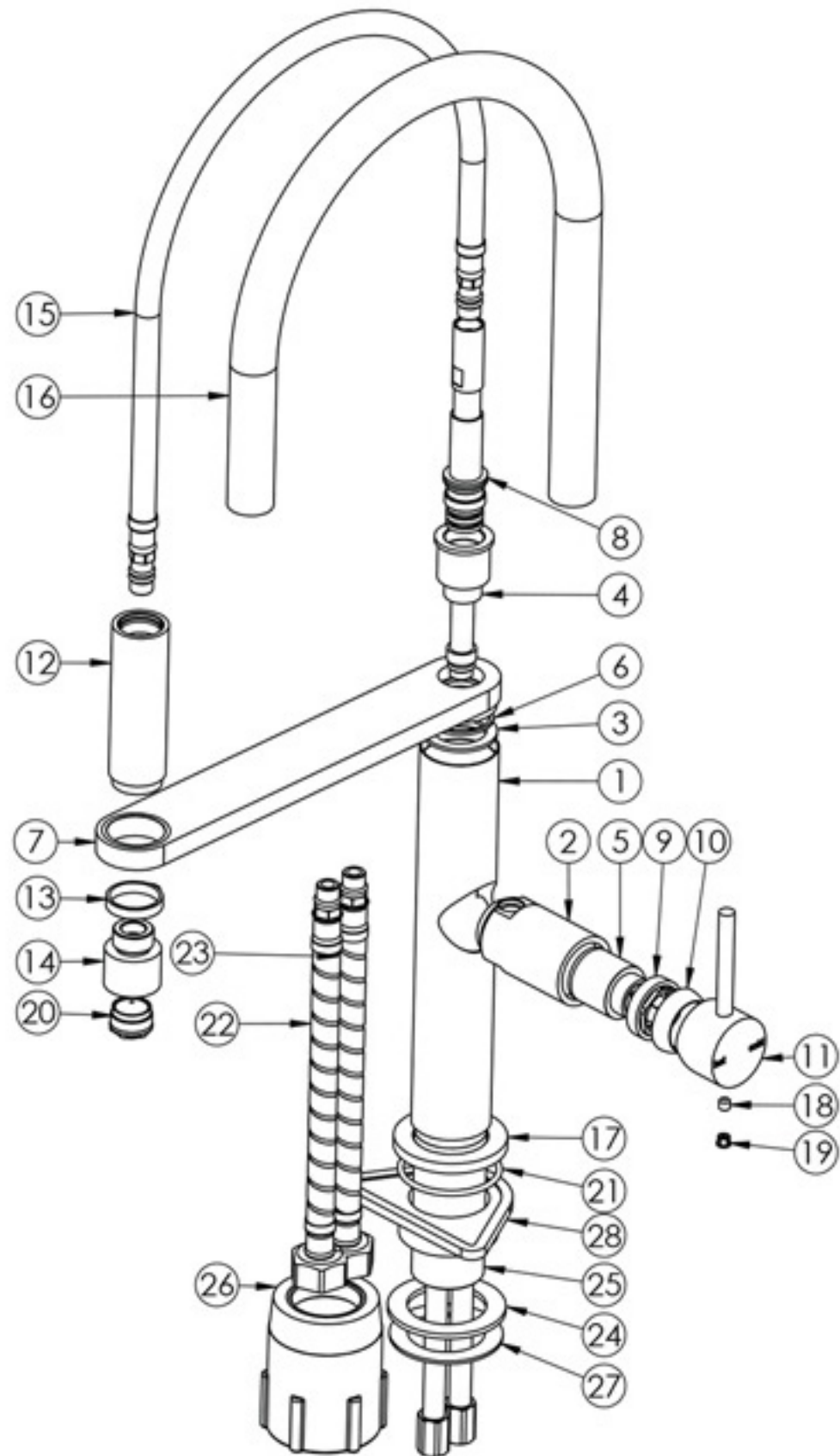


## PARTS LIST

1. MIXER BODY
2. CARTRIDGE SEAT
3. BRASS DISC
4. MIXER SHAFT
5. 25MM CARTRIDGE
6. PLASTIC BEARING
7. MIXER HOSE CRADLE
8. BAR RETAINING SHAFT
9. MIXER LOCKNUT
10. MIXER DOME
11. MIXER HANDLE
12. HAND PIECE BODY
13. HAND PIECE RING
14. HAND PIECE NOZZLE
15. HAND PIECE FLEXIBLE HOSE
16. HAND PIECE RUBBER TUBE
17. DRESS PLATE
18. GRUB SCREW M5X5MM
19. SCREW CAP
20. AERATOR
21. O-RING 41X2.5MM
22. FLEXIBLE HOSE 450MM COLD
23. FLEXIBLE HOSE 450MM HOT
24. LOCKNUT GASKET
25. THREADED TAIL
26. PLASTIC LOCKNUT
27. MOUNTING DISC
28. SWIVEL SPACER



## MAINTENANCE AND CARE:

- Chrome plated surfaces should be cleaned with mild liquid detergent or soap and water.
- Do not use cream cleaners or citrus based cleaning products, as they are abrasive. Use of unsuitable cleaning agents may damage the surface. Any damage caused in this way will not be covered by warranty.