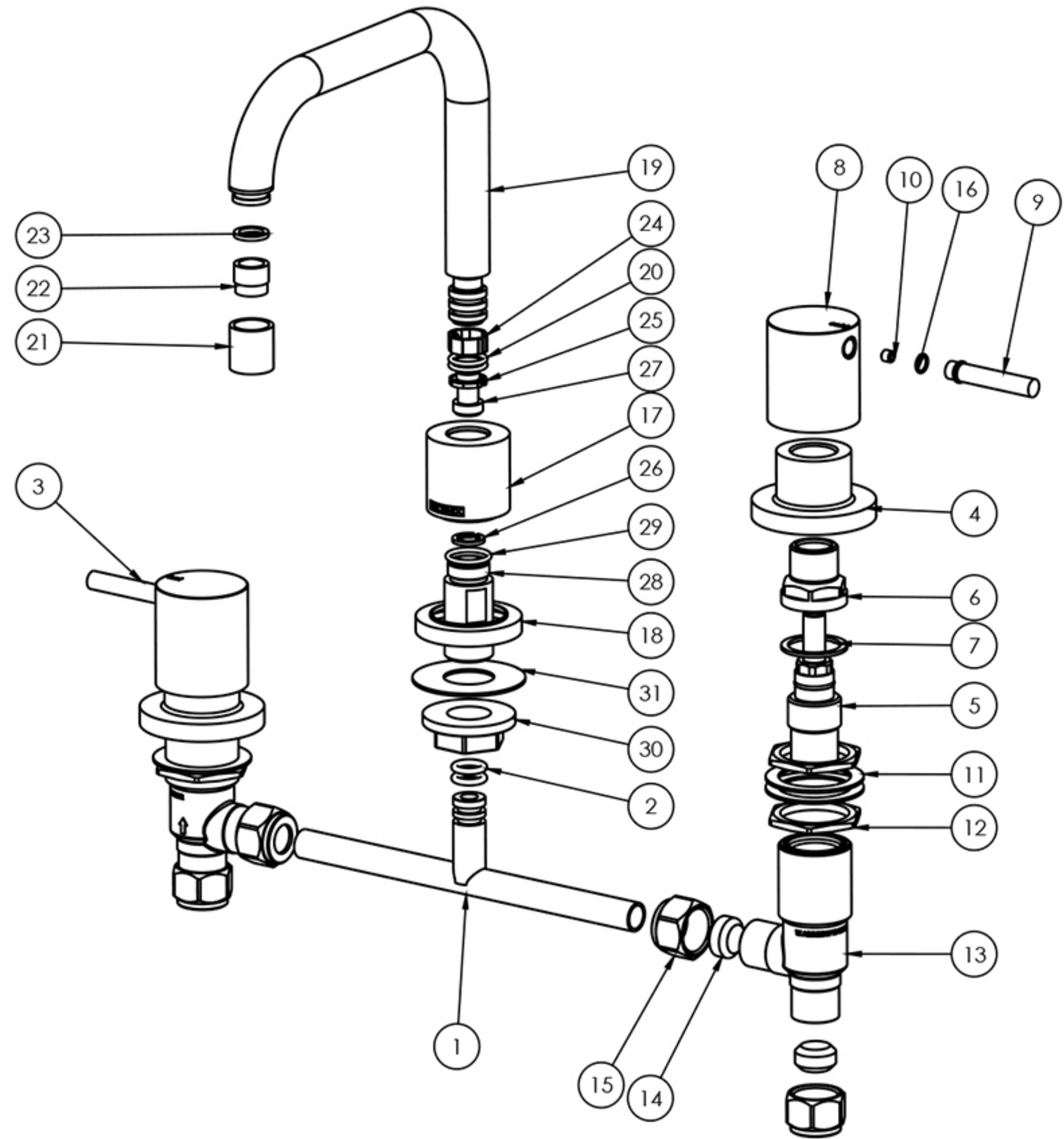


1. BASIN T-PIECE
2. O-RING 10X2.75MM
3. PIN LEVER TOP SUBASSY
4. TAP FLANGE
5. 74MM CARTRIDGE
6. BONNET
7. FIBER WASHER
8. HANDLE BODY
9. PIN LEVER
10. GRUB SCREW M5X5
11. BODY WASHER
12. BASIN NUT
13. TAP BODY
14. CONNECTOR
15. T-PIECE LOCKNUT
16. O-RING 65X1.0MM
17. BASIN FLANGE
18. DRESS RING
19. SPOUT
20. O-RING 13X2.0MM
21. RETAINER
22. AERATOR
23. GASKET
24. SPOUT BEARING LARGE
25. SPOUT BEARING SMALL
26. SPOUT RETAINER WASHER
27. SPOUR RETAINER SCREW
28. OUTLET TAIL
29. O-RING 16X2MM
30. LOCKNUT PLASTIC
31. NYLON WASHER



---

- All surfaces should be cleaned with mild liquid detergent or soap and water.
- Do not use cream cleaners or citrus based cleaning products, as they are abrasive.
- Use of unsuitable cleaning agents may damage the surface. Any damage caused in this way will not be covered by warranty.