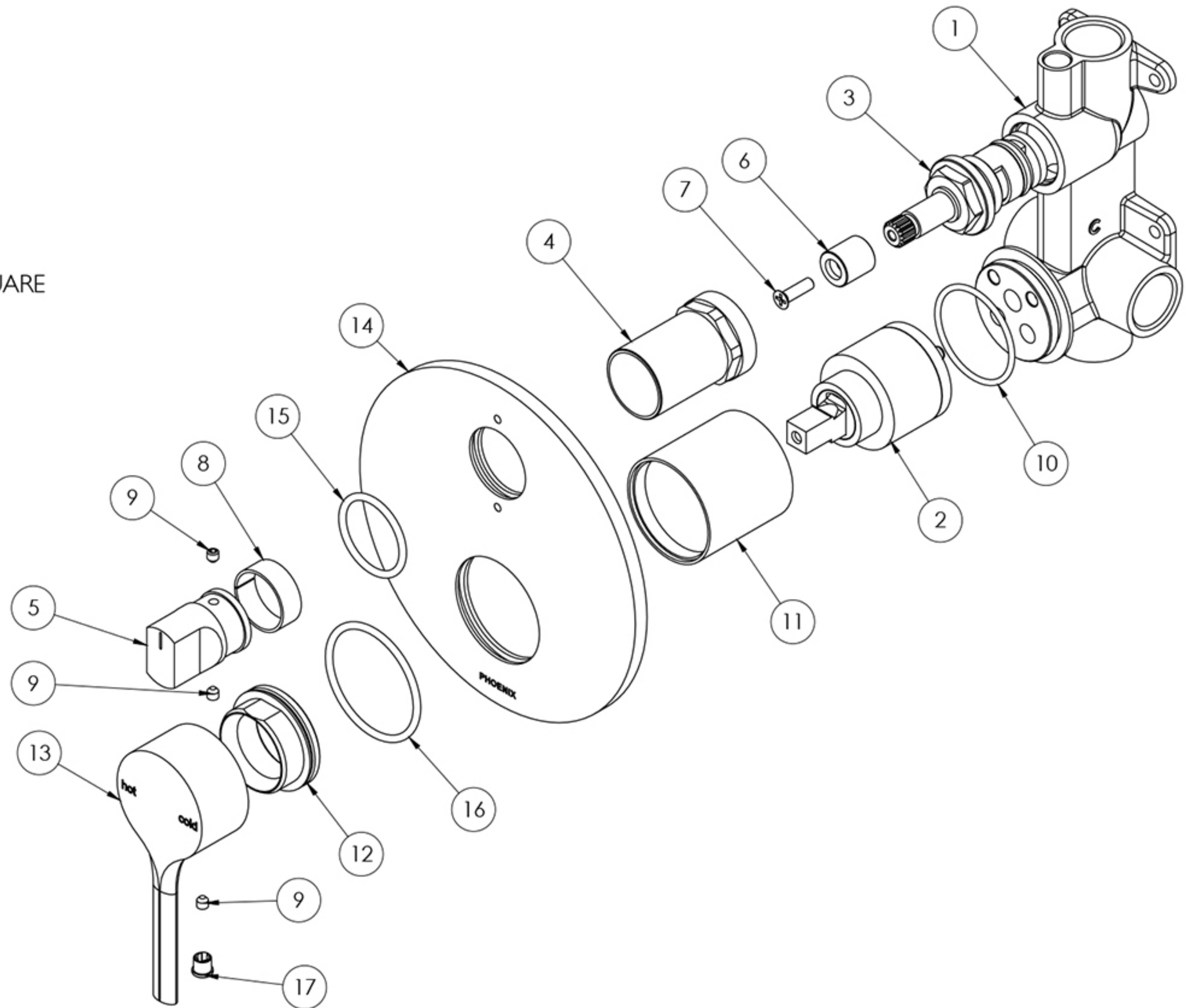


## PARTS LIST

1. DIVERTER MIXER BODY
2. 35MM MIXING CARTRIDGE
3. DIVERTER CARTRIDGE
4. DIVERTER SLEEVE
5. ROTARY DIVERTER BUTTON SQUARE
6. DIVERTER SPINDLE ADAPTOR
7. COUNTERSUNK M4X14MM
8. DIVERTER NYLON BEARING
9. GRUB SCREW M4X4
10. O-RING 33X2.0MM
11. MIXER SLEEVE
12. LOCKNUT DOME
13. MIXER HANDLE
14. DRESS PLATE
15. O-RING 26X2.5MM
16. O-RING 39X2.5MM
17. GRUB SCREW CAP



## MAINTENANCE AND CARE:

- All surfaces should be cleaned with mild liquid detergent or soap and water.
- Do not use cream cleaners or citrus based cleaning products, as they are abrasive.
- Use of unsuitable cleaning agents may damage the surface. Any damage caused in this way will not be covered by warranty.