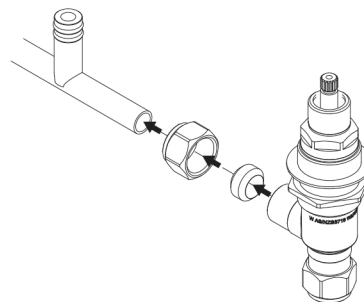


1

- Measure centre distance between holes in basin top and cut the T-Piece to required length.
- Remove Handle, Handle Washer, Flange, Dress Plate, Top Locknut and one Washer.
- Fit Nuts and Plastic Olives to each end of the T-Piece, connect to the Tap Bodies and fasten Nuts.

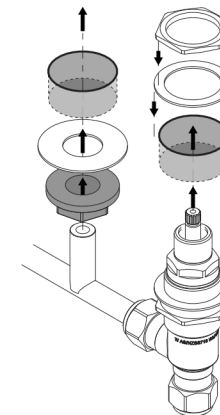
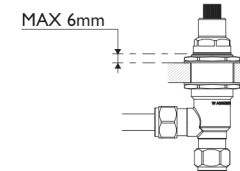


2

- Push Assembly up through the holes in the Basin Top.
- Fasten both Tap Bodies using the Locknuts.

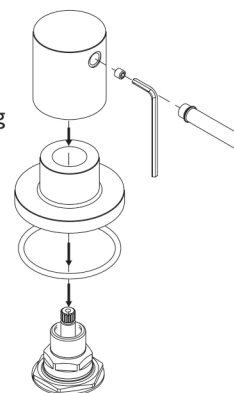
#### PLEASE NOTE

Adjust the Top and Bottom Locknuts to ensure the Red Fibre Washer sits at a maximum of 6mm above the Basin Top, as shown:



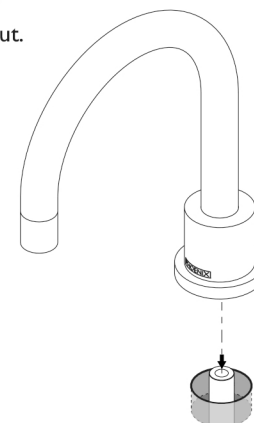
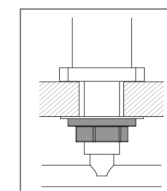
3

- Fit O-Ring to the groove in the rear of the Flange.
- Firmly fasten Flange onto the Tap Body.
- Fit Handle Hub to Spindle and fasten with the Grub Screw using the Allen Key provided.
- Screw the Handle Pin into the Handle Hub

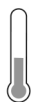


4

- Screw Spout onto T-Piece.
- Firmly fasten Spout Locknut.
- Connect to water supply
- Test and Check for leaks



recommended  
working pressure  
**150-500  
KPa**



maximum hot  
water temperature  
**75  
degrees**