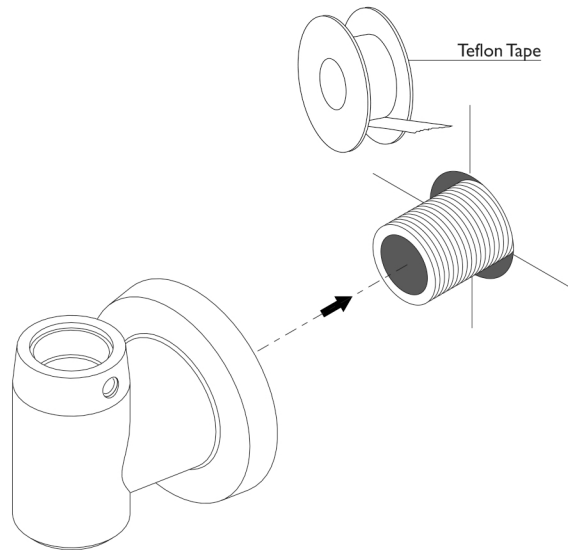
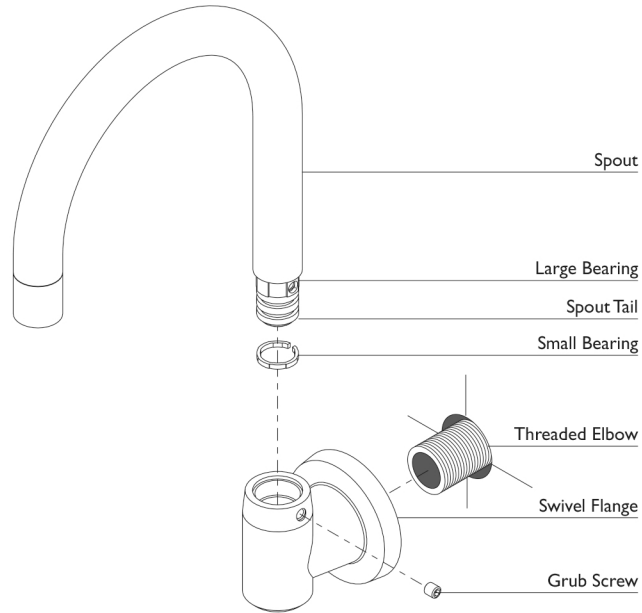


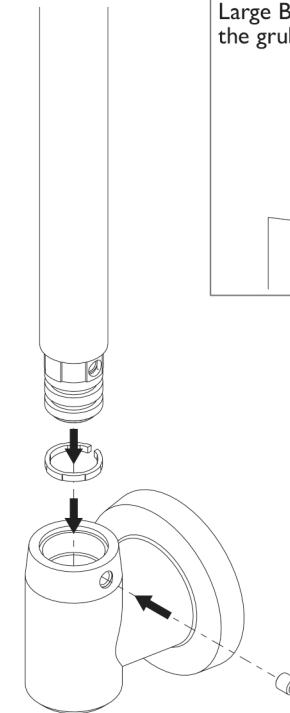
**1**

- Apply Teflon Tape to Threaded Elbow.
- Firmly screw the Swivel Flange onto Threaded Elbow.



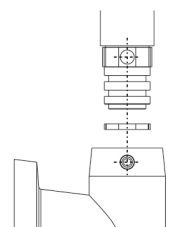

**2**

- Seat the Small Bearing inside the Swivel Flange.
- Push Spout Tail into the Swivel Flange.
- Fasten Grub Screw until tight and then loosen a quarter turn.

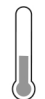


**NOTE**

Ensure that the hole in the Large Bearing aligns with the grub screw hole:

recommended working pressure  
**150-500 KPa**



maximum hot water temperature  
**75 degrees**