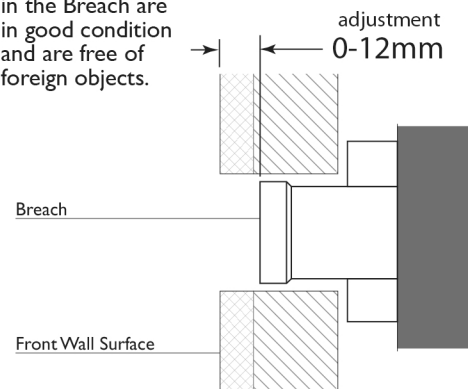


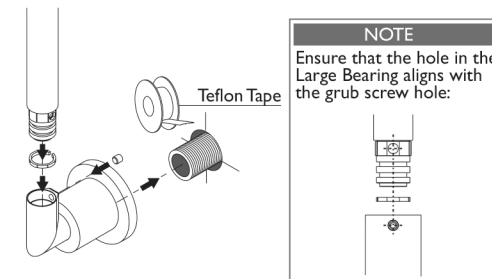
BREACH SET-UP

Ensure that seats in the Breach are in good condition and are free of foreign objects.



1

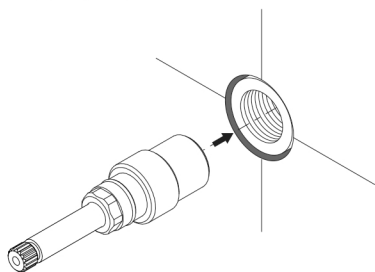
- Apply Teflon Tape to Threaded Elbow.
- Firmly screw the Swivel Flange onto Threaded Elbow.
- Seat the Small Bearing inside the Swivel Flange.
- Push Spout Tail into the Swivel Flange.
- Fasten Grub Screw until tight and then loosen a quarter turn.



2

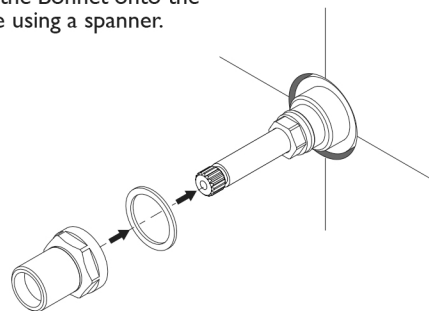
Firmly screw Spindle into the Breach.

DO NOT OVERTIGHTEN



3

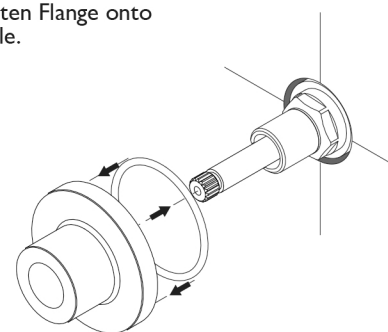
Fit Fibre Washer around the Spindle and then firmly fasten the Bonnet onto the Spindle using a spanner.



4

Fit O-Ring to the groove in the rear of the Flange.

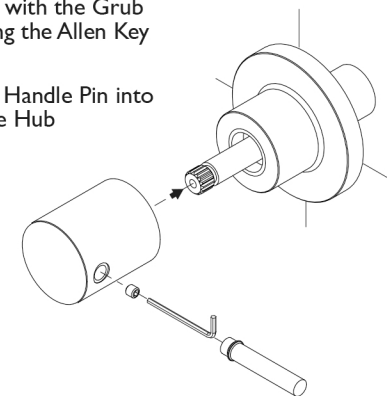
Firmly fasten Flange onto the Spindle.



5

Fit Handle Hub to Spindle and fasten with the Grub Screw using the Allen Key provided.

Screw the Handle Pin into the Handle Hub



recommended working pressure
150-500 KPa

maximum hot water temperature
75 degrees