

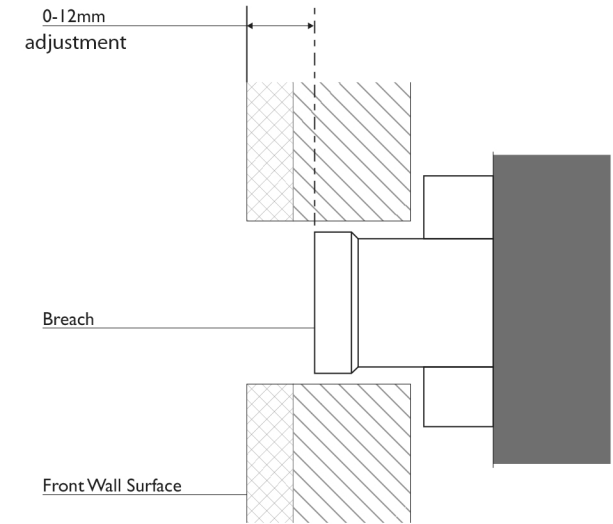
**NOTE**  
Check the rubber seal under each spindle:

**HOT**  
← RED

**COLD**  
← BLUE

**BREACH SET-UP**

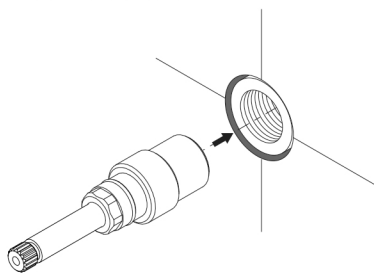
- Ensure that seats in the Breach are in good condition and are free of foreign objects.
- The recommended installation range for the breach are as shown:
- Reseat if required.



**1**

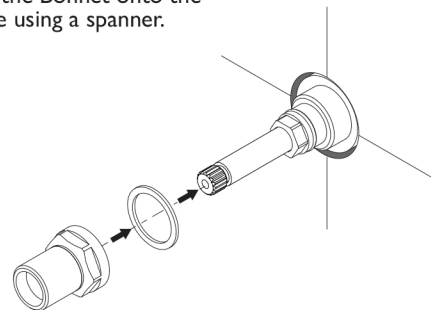
Firmly screw Spindle into the Breach.

**DO NOT OVERTIGHTEN**



**2**

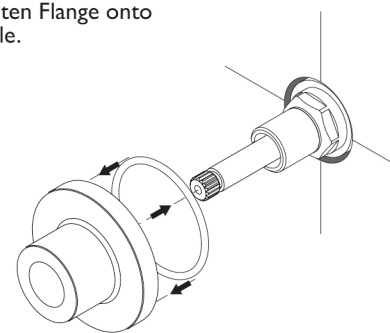
Fit Fibre Washer around the Spindle and then firmly fasten the Bonnet onto the Spindle using a spanner.



**3**

Fit O-Ring to the groove in the rear of the Flange.

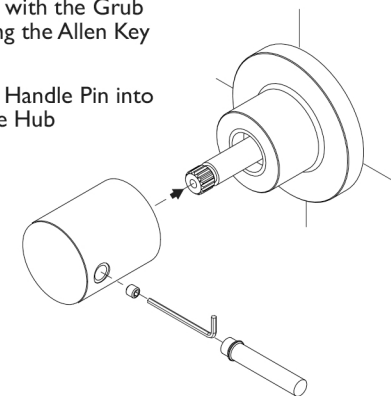
Firmly fasten Flange onto the Spindle.



**4**

Fit Handle Hub to Spindle and fasten with the Grub Screw using the Allen Key provided.

Screw the Handle Pin into the Handle Hub



recommended working pressure  
**150-500 KPa**



maximum hot water temperature  
**75 degrees**