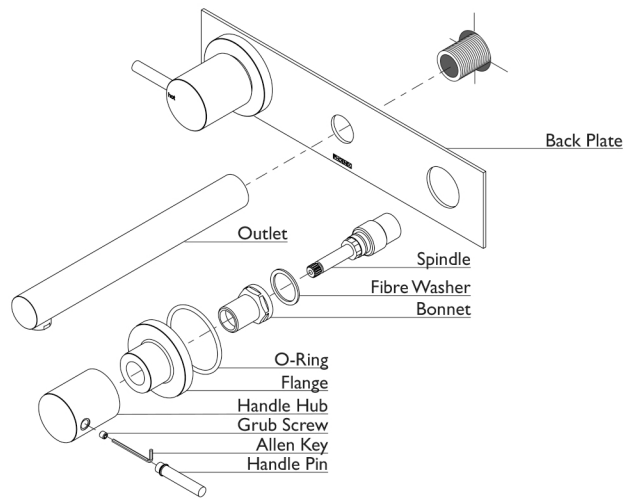


NOTE

Check the rubber seal under each spindle:

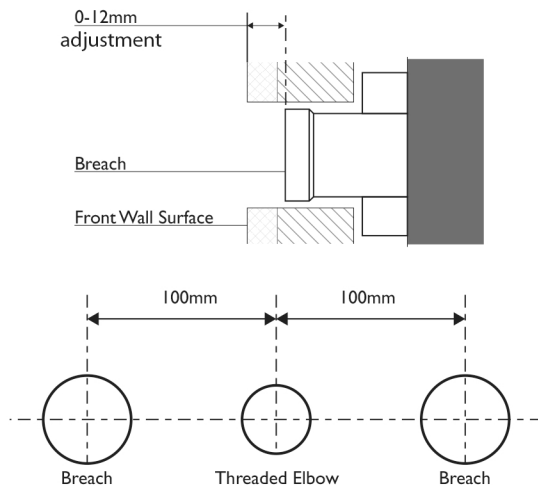
HOT
← RED

COLD
← BLUE



BREACH SET-UP

- Ensure that seats in the Breach are in good condition and are free of foreign objects.
- The recommended installation range for the breach are as shown:
- Reseat if required.
- Recess Breaches must be 100mm each side of the Threaded Elbow



2

Fix Back Plate to wall using the adhesive tape on the back.

3

Firmly screw Spindle into the Breach.

DO NOT OVERTIGHTEN

Fit Fibre Washer around the Spindle and then firmly fasten the Bonnet onto the Spindle using a spanner.

4

Fit O-Ring to the groove in the rear of the Flange. Firmly fasten Flange onto the Spindle.

Fit Handle Hub to Spindle and fasten with the Grub Screw using the Allen Key provided.

Screw the Handle Pin into the Handle Hub

5

Apply Teflon Tap to Threaded Elbow. Screw Outlet onto Threaded Elbow.

recommended working pressure
150-500 KPa

maximum hot water temperature
75 degrees