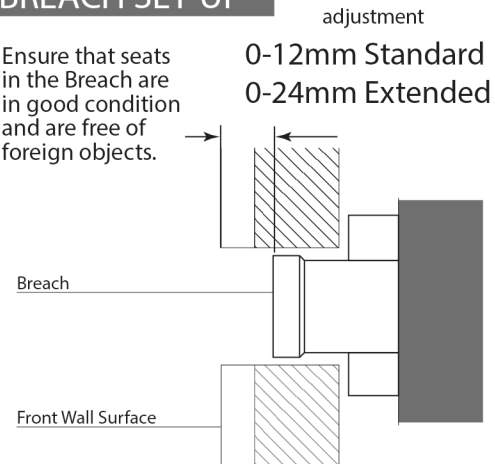


BREACH SET-UP

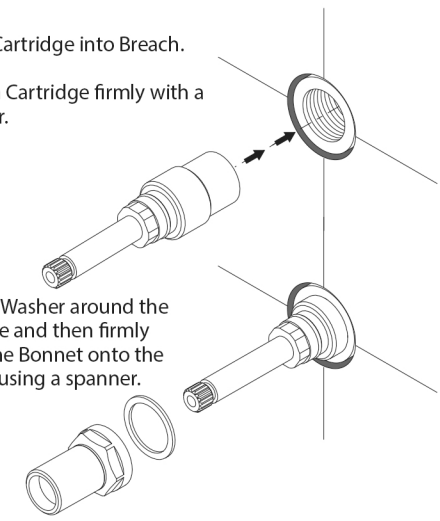
Ensure that seats in the Breach are in good condition and are free of foreign objects.



1

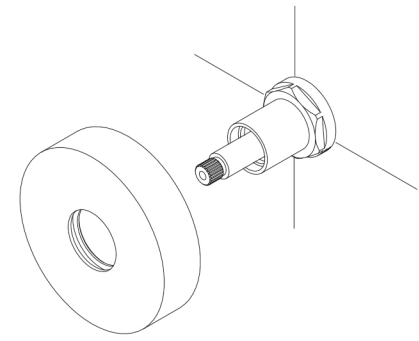
Screw Cartridge into Breach.
Tighten Cartridge firmly with a spanner.

Fit Fibre Washer around the Cartridge and then firmly fasten the Bonnet onto the Spindle using a spanner.



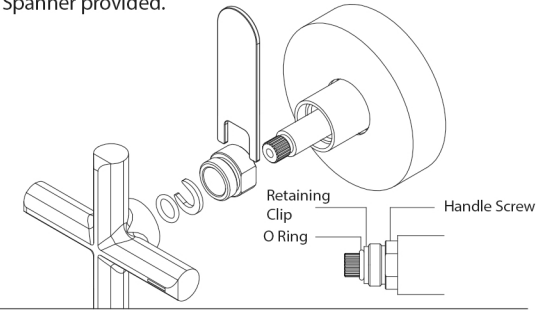
2

- Ensure that both Taps are in the closed position.
- Apply Silicone bead around edge of Flange. Push Flange onto Bonnet until edge is in contact with tiles.



3

- Place handle screw onto Cartridge shaft with thread facing handle. Press Retaining Clip into Cartridge shaft groove. Fit small O Ring over the spline and push up against the Retaining Clip.
- Fit the Handle onto the Spindle.
- Fasten the Handle Screw to the Spindle, using the Spanner provided.



recommended working pressure
150-500 KPa

maximum hot water temperature
75 degrees