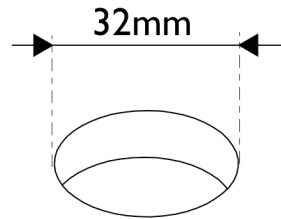


1

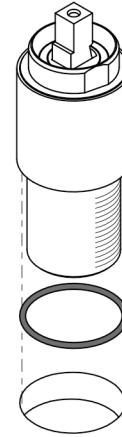
Using a hole saw, drill a neat hole 32mm in diameter through the hob bench.



2

Fit O-Ring to the groove in the base of the Mixer Body.

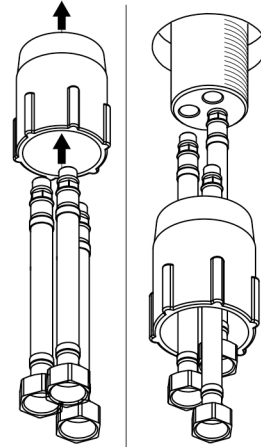
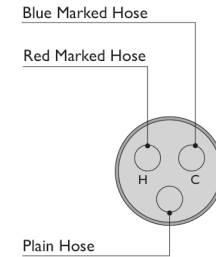
Feed the threaded end of the Mixer Body through the hole.



3

Feed Hoses through the bottom end of the Locknut.

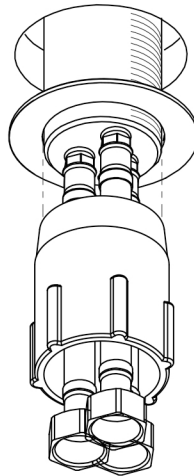
Connect Hoses to Mixer Body as shown.



4

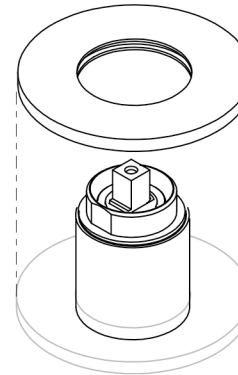
Place Washer over Mixer Body and screw Locknut in place.

Tighten firmly.



5

Fit Dress Ring over the Mixer Body.

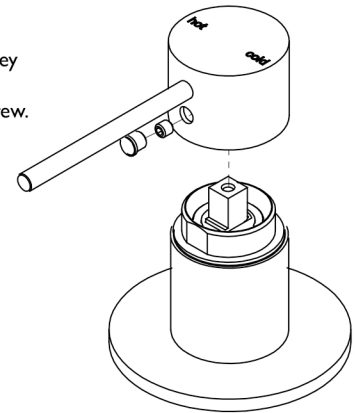


6

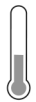
Place Handle onto Mixer Body.

Using the allen key provided, firmly tighten Grub Screw.

Firmly push in Screw Cap.



recommended working pressure
150-500 KPa



maximum hot water temperature
75 degrees