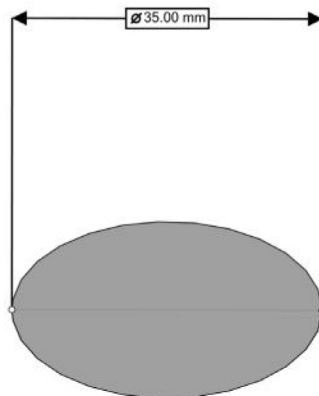
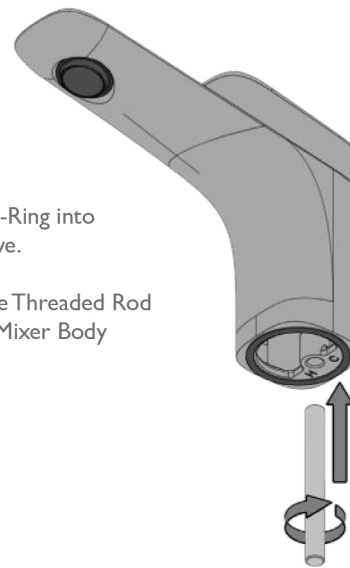


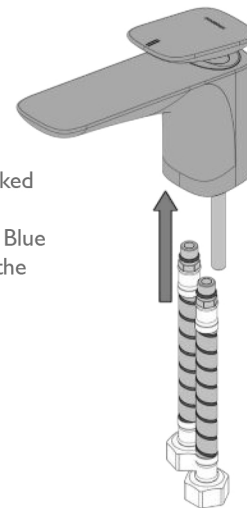
- 1** Cut a mounting hole 35mm in diameter. There must be a minimum 12mm clearance around the hole.



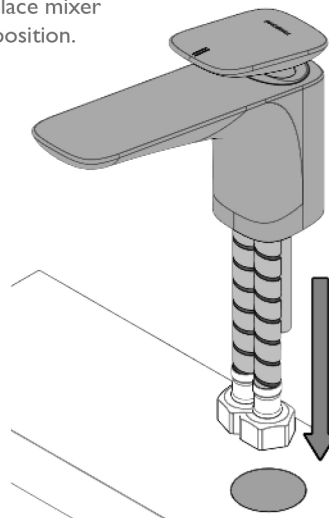
- 2**
- Fit the O-Ring into the groove.
- Screw the Threaded Rod into the Mixer Body



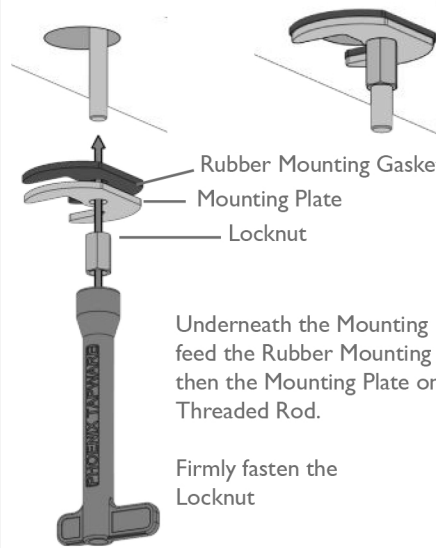
- 3**
- Screw the Red Marked Hose into the hole marked 'H' and the Blue Marked Hose into the hole marked 'C'.



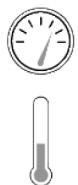
- 4** Feed the Hoses and Rod through the mounting hole and place mixer into position.



- 5**
- Rubber Mounting Gasket
- Mounting Plate
- Locknut
- Underneath the Mounting Hole, feed the Rubber Mounting Gasket then the Mounting Plate onto the Threaded Rod.
- Firmly fasten the Locknut



- 6**
- Connect hoses to the water supply.
- Test and check for leaks.



recommended
working pressure
**150-
500KPa**
maximum hot
water temperature
**75
degrees**

NOTE:

- If the pressure exceeds or is likely to exceed 550kPa, an approved pressure limiting device must be installed.
 - Flush out all pipe work prior to installation.
 - If the water temperature exceeds 75°C, an approved tempering valve must be fitted.
 - Installation should comply with Australian standard AS3500.1 or relevant local authority requirements.
- Showers may not be suitable for use within:
- Gravity-fed water systems
 - Some instantaneous hot water systems; or

- Pressure supply less than 150kPa;
- NOTE: The 500kPa maximum water supply pressure does not apply to fire service outlets.

Failure to comply with the above may void all warranties.