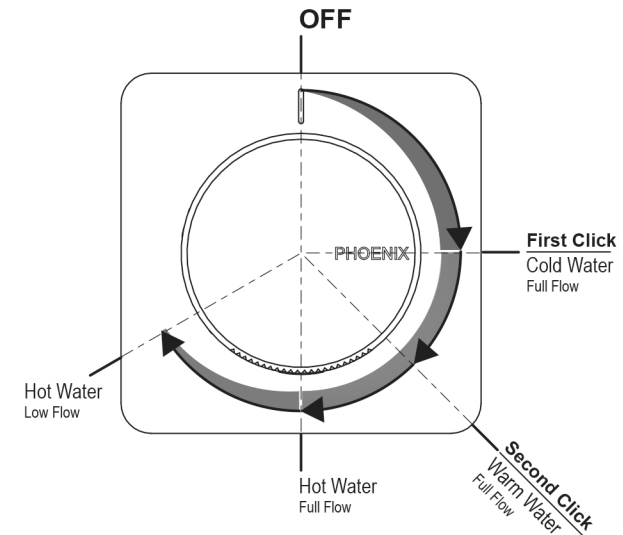
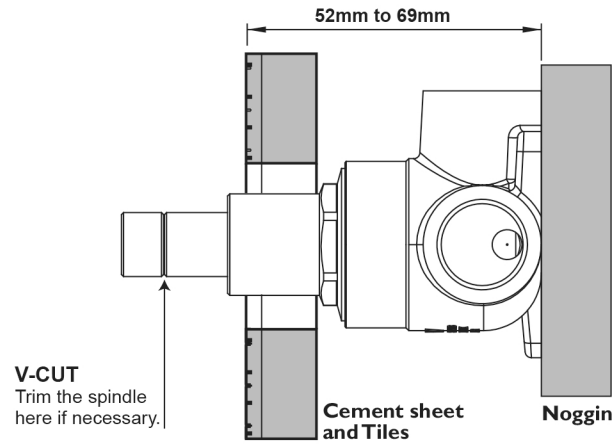


BREACH SET-UP: Total adjustment range is from 52mm to 69mm.
Between 61mm to 69mm, handle can be installed without trimming the spindle.

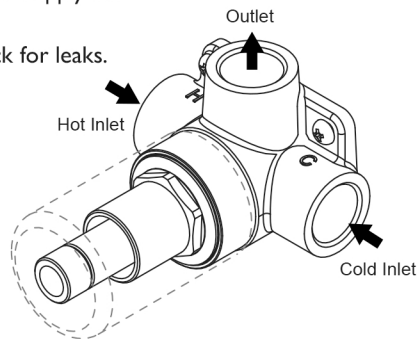


1

Mount the Mixer Body in place using the wood screws provided. Ensure that Mixer Body is level.

Connect water supply and water outlet.

Test and check for leaks.



2

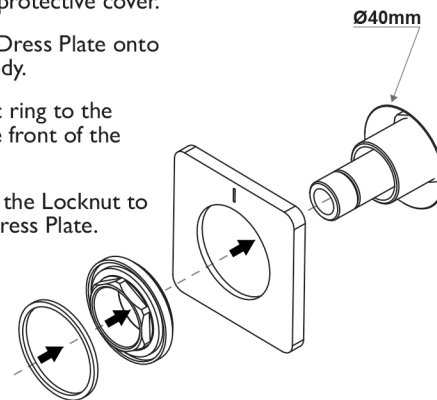
Create a 40mm round hole in cement sheet and tiles.

Remove the protective cover.

Push on the Dress Plate onto the Mixer Body.

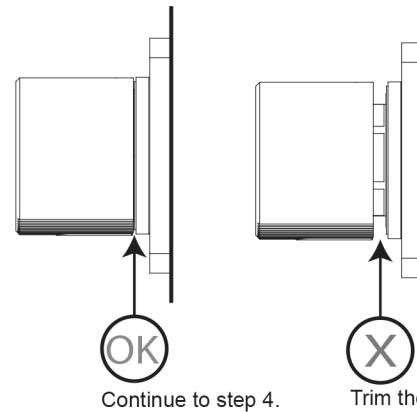
Fit the plastic ring to the groove in the front of the Locknut.

Firmly fasten the Locknut to secure the Dress Plate.



3

Check if the spindle needs to be trimmed. Mixer handle should be resting on the plastic ring.

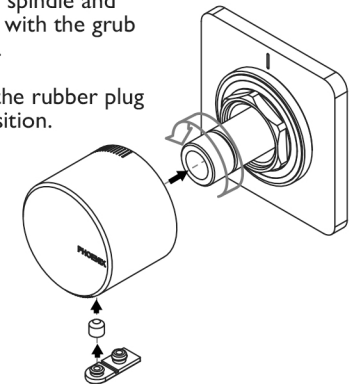



4

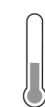
Turn the spindle Anti-Clockwise until the cartridge is set to OFF position.

Fit the mixer handle to the spindle and fasten with the grub screw.

Push the rubber plug to position.

recommended working pressure
150-500 KPa



maximum hot water temperature
55 degrees