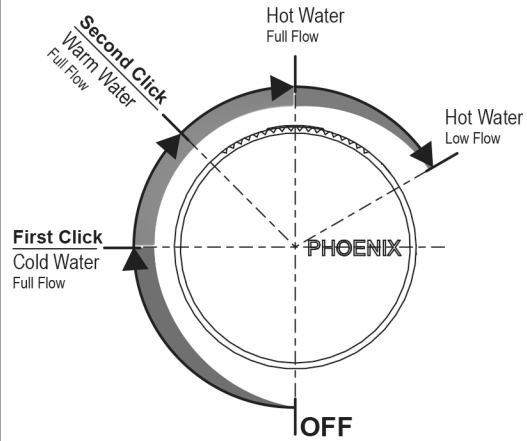
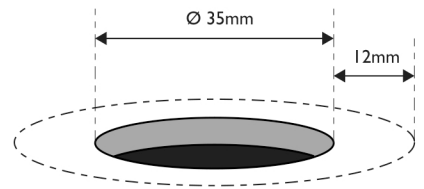


Operation



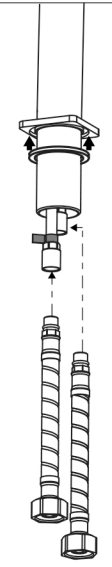
1

Cut a mounting hole 35mm in diameter. There must be a minimum 12mm width of flat around the hole.



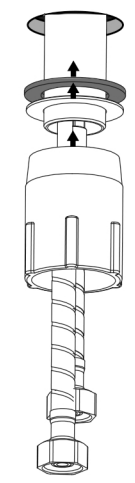
2

Fit the rubber washer into the groove under the Dress Plate.
Screw the Red Marked Hose into the hot water inlet marked with red tape.
Screw the Blue Marked Hose into the cold water inlet.



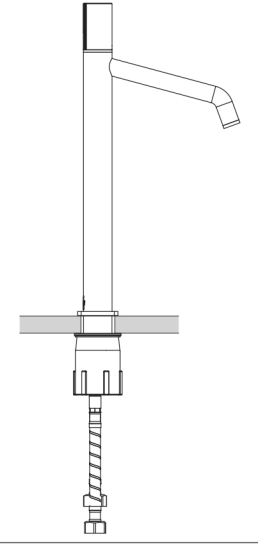
3

Feed the threaded tail through the mounting hole.
Underneath the Mounting Hole, feed the Rubber Gasket then the Tail Washer onto the Threaded Tail.
Firmly fasten the Locknut to secure mixer.



4

Connect hoses to the water supply.
Test and check for leaks.



recommended working pressure
150-500 KPa

maximum hot water temperature
55 degrees