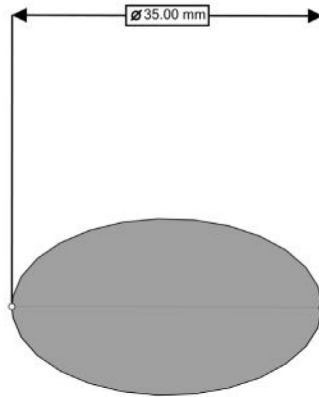
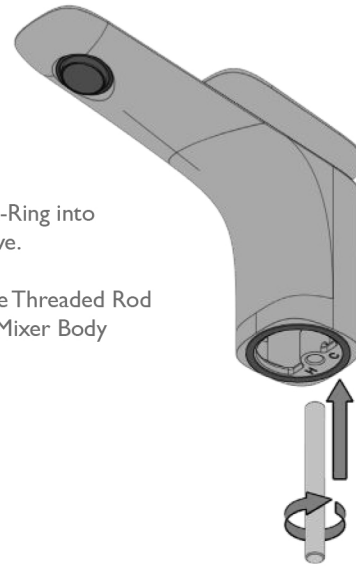


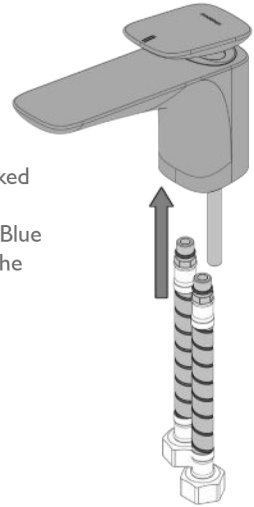
1 Cut a mounting hole 35mm in diameter. There must be a minimum 12mm clearance around the hole.



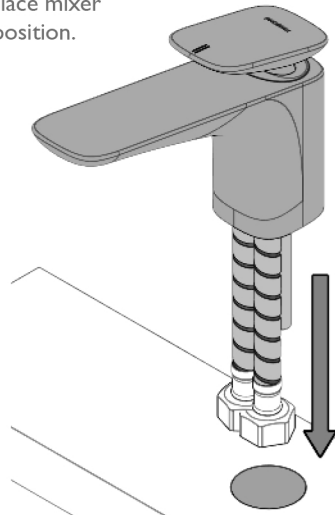
2 Fit the O-Ring into the groove.
Screw the Threaded Rod into the Mixer Body



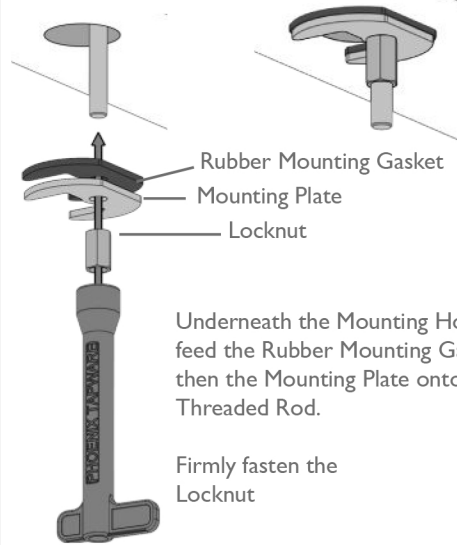
3 Screw the Red Marked Hose into the hole marked 'H' and the Blue Marked Hose into the hole marked 'C'.



4 Feed the Hoses and Rod through the mounting hole and place mixer into position.



5 Underneath the Mounting Hole, feed the Rubber Mounting Gasket then the Mounting Plate onto the Threaded Rod.
Firmly fasten the Locknut



6 Connect hoses to the water supply.
Test and check for leaks.



recommended working pressure

150-500KPa

maximum hot water temperature

75 degrees

