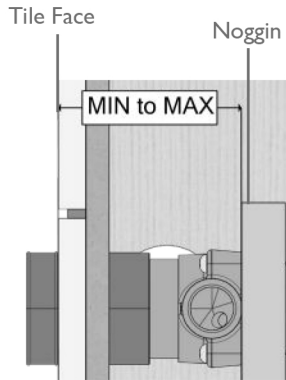
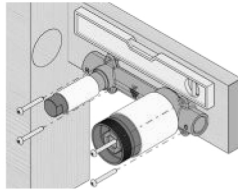


ADJUSTMENT RANGE

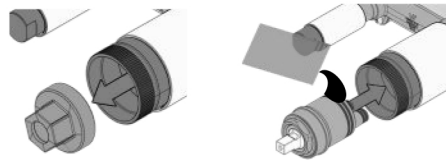


MIN: 68mm
MAX: 80mm

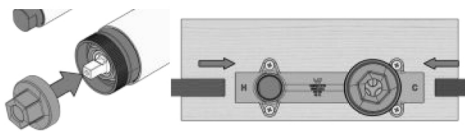
- 1** Screw the Mixer Breach onto Nogging. Ensure that the mixer body centres are level.



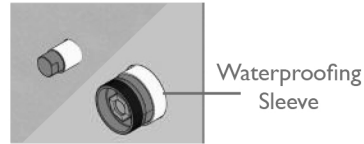
Remove Plastic Locknut. Apply grease to Rubber O-Rings and install into Plastic Sleeve.



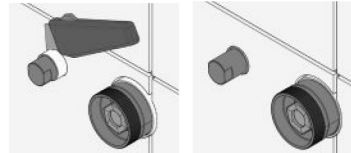
Connect hot and cold water supply. Test and check for leaks. Reinstall plastic locknut.



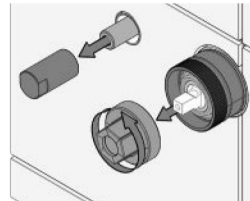
- 2** Seal waterproofing membrane up to waterproofing sleeves.



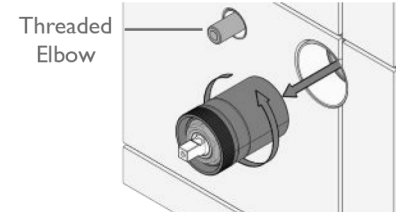
Use knife to trim Waterproofing Sleeves until flush with tile face.



Unscrew protective covers from Rough In Body.



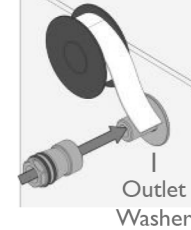
- 3** Unscrew Cartridge protective cover. Removing Cartridge.



Apply Teflon Tape to Threaded Elbow.

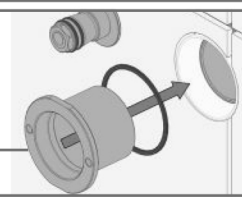
Push Outlet Washer onto threaded Elbow.

Screw Outlet Adapter onto Outlet Washer.



Screw Wall Mixer Flange onto Rough In Body.

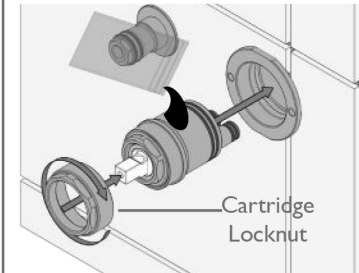
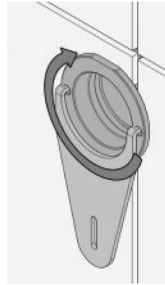
Wall Mixer Flange



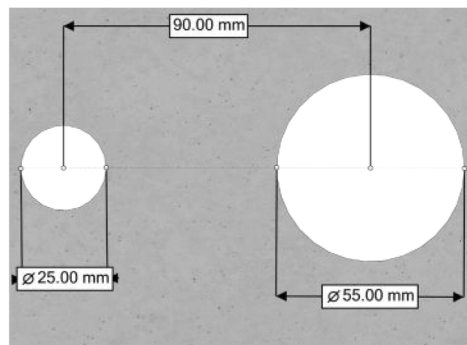
- 4** Using supplied Adjustment Spanner tighten Wall Mixer Flange.

Apply supplied grease to Rubber O-Rings. Slide Cartridge into position.

Tighten Cartridge Locknut onto Wall Mixer Flange.



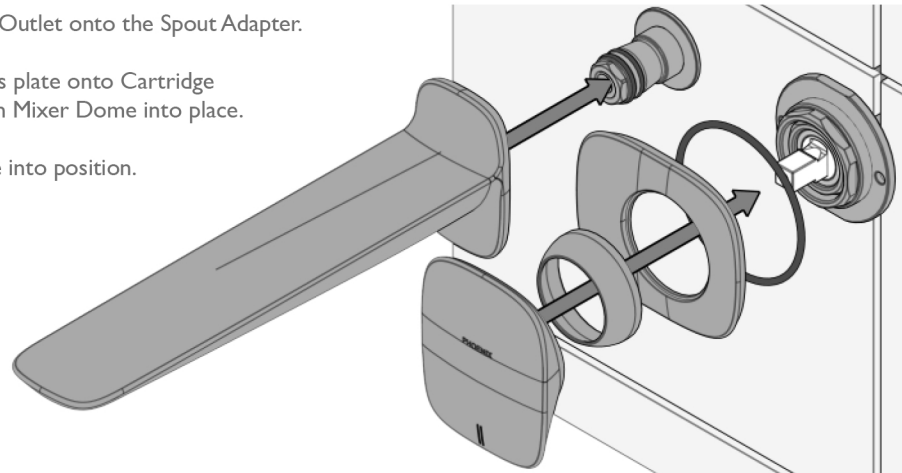
HOLE DIMENSIONS



- 5** Push Wall Outlet onto the Spout Adapter.

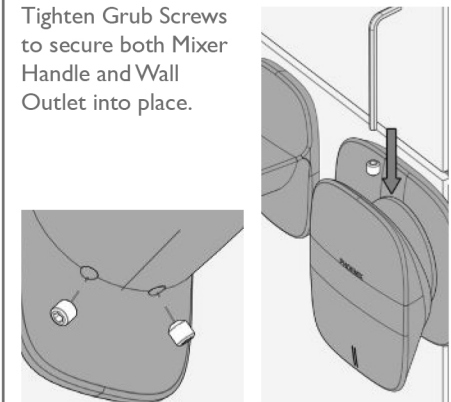
Push Dress plate onto Cartridge and tighten Mixer Dome into place.

Fix Handle into position.



- 6**

Tighten Grub Screws to secure both Mixer Handle and Wall Outlet into place.



recommended working pressure

150-500KPa

maximum hot water temperature

75 degrees

