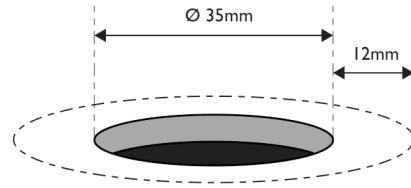


1

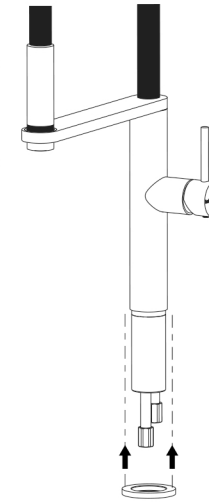
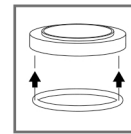
Cut a mounting hole 35mm in diameter. There must be a minimum 12mm width of flat around the hole.



2

Fit Rubber Ring into the groove under the Dress Ring.

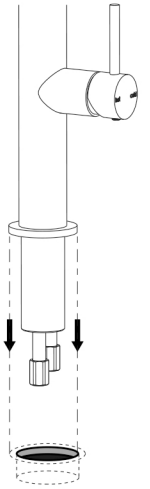
Slide the Dress Ring over the Threaded Tail.



3

Feed the Threaded Tail through the mounting hole.

Rotate sink mixer to desired position over the sink.

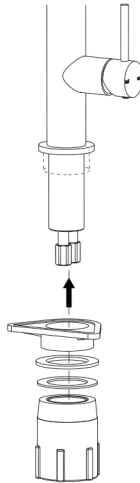


4

Underneath mounting hole, slide the Plastic Sink Spacer over Threaded Tail (if installing onto stainless steel sinks).

Slide the Rubber Gasket and the Tail Washer over the Threaded Tail.

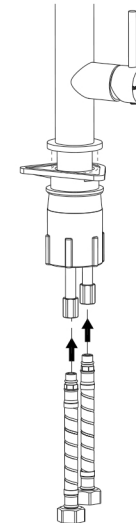
Firmly fasten the Lock Nut to secure mixer.



5

Screw the Red Marked Hose into the Hot Water Inlet, and the Blue Marked Hose into the Cold Water Inlet.

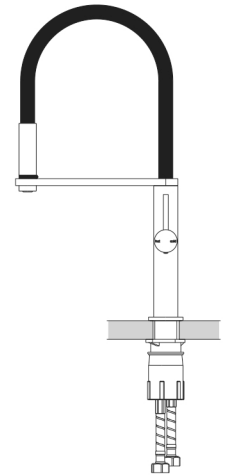
Firmly tighten with a spanner.



6

Connect hoses to the water supply.

Test and check for leaks.



recommended working pressure
150-500 KPa



maximum hot water temperature
75 degrees