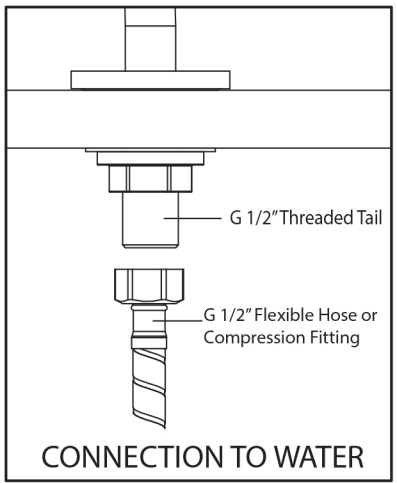
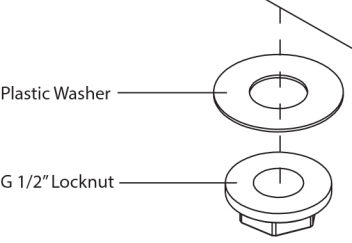
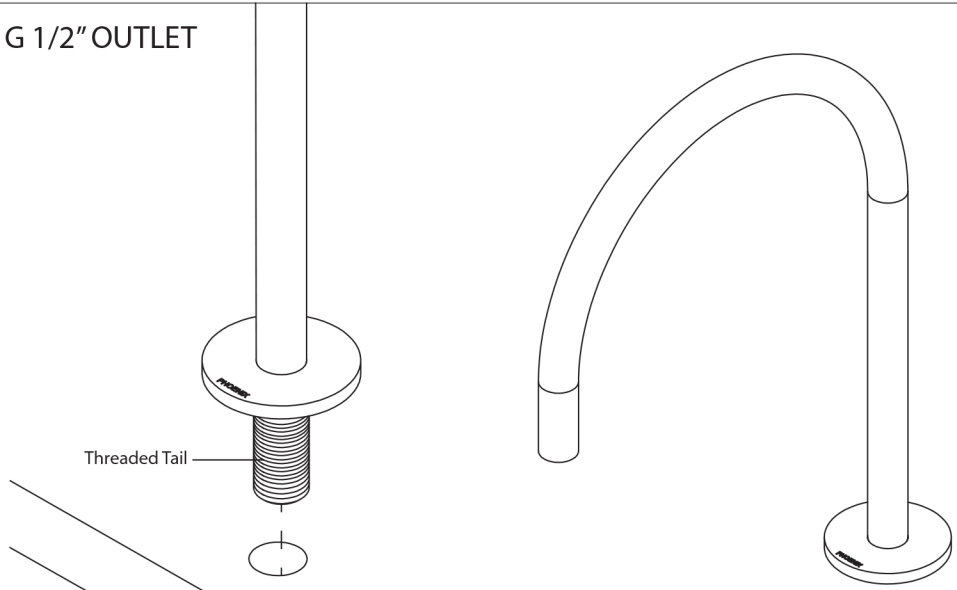
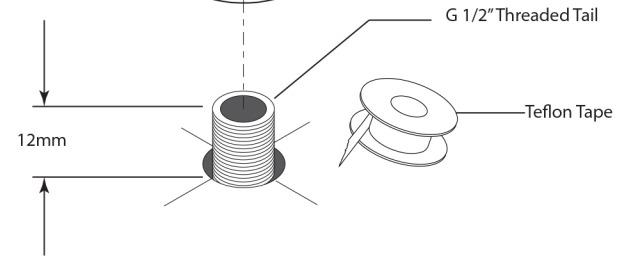
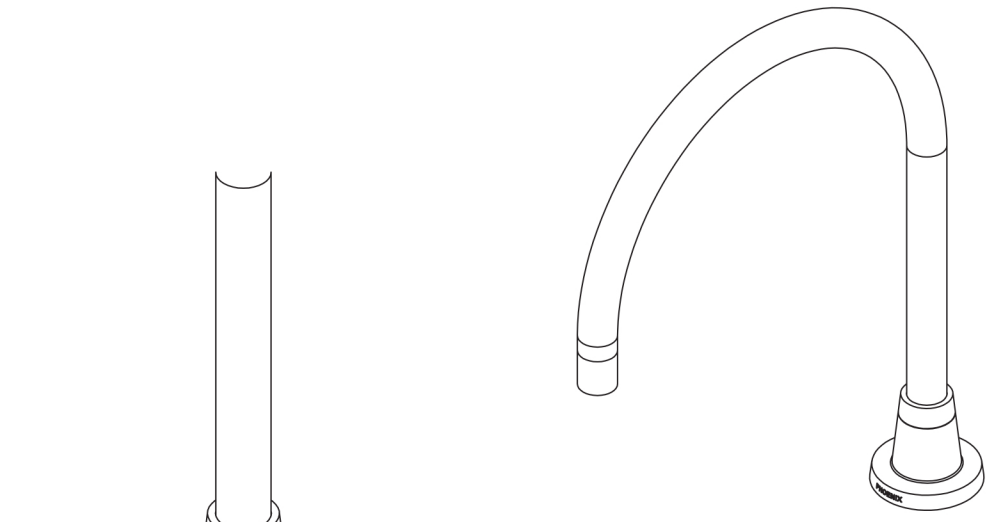


MALE G 1/2" OUTLET




Drill a 22-25mm hole through the bench surface. Insert Outlet as shown. Fit Plastic Washer and G 1/2" Locknut to the threaded tail. Tighten firmly.

FEMALE G 1/2" OUTLET




Cut G 1/2" Tail to approximately 12mm from bench surface. Apply Teflon Tape to thread. Screw base of Outlet onto the threaded tail. Tighten firmly.



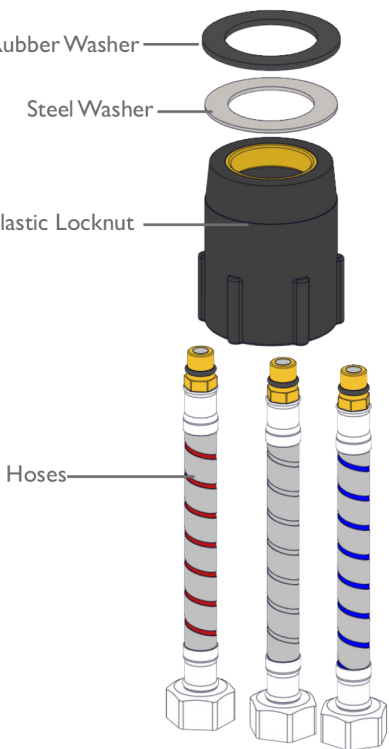
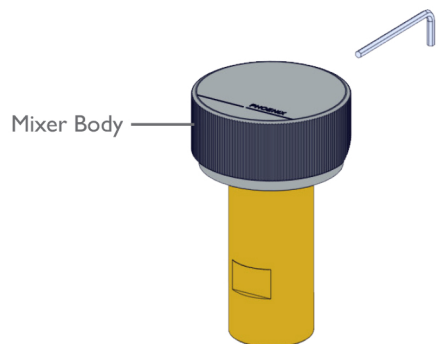
recommended working pressure

150-500 KPa

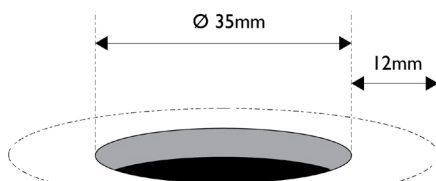


maximum hot water temperature

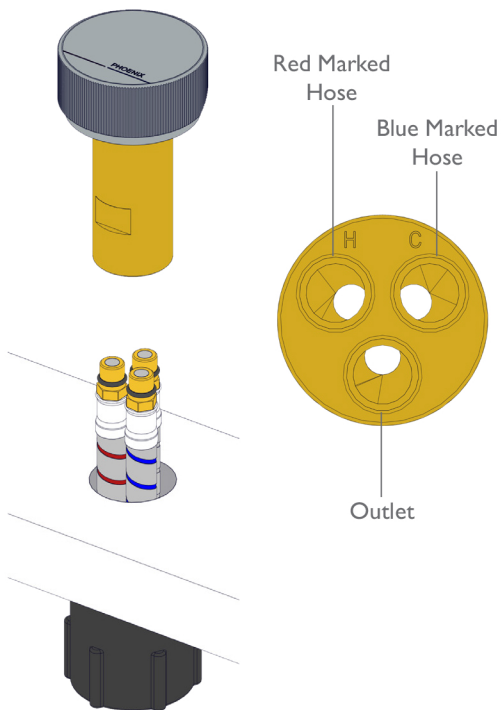
75 degrees



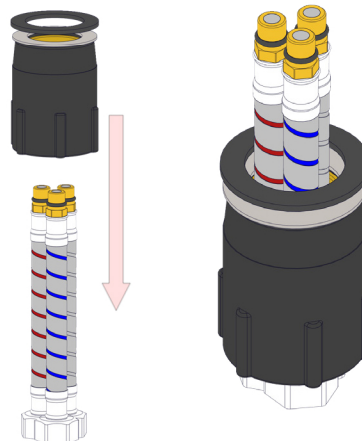
- 1** Using a hole saw, drill a neat hole 35mm in diameter through the hob bench. Ensure 12mm clearance around hole.



- 4** Connect to Mixer Body as shown.

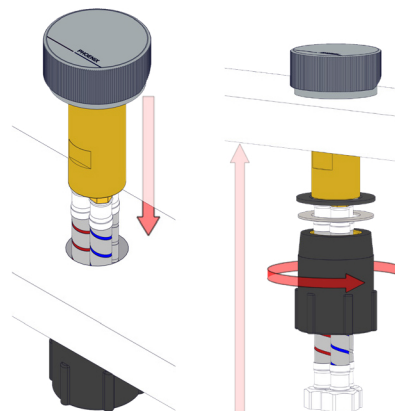


- 2** Feed Hoses through the bottom end of the Locknut and both Washers.

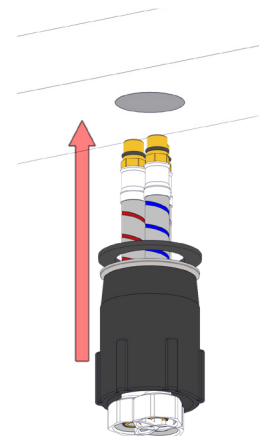


- 5** Slide Mixer Body through Benchtop hole and screw Locknut in place.

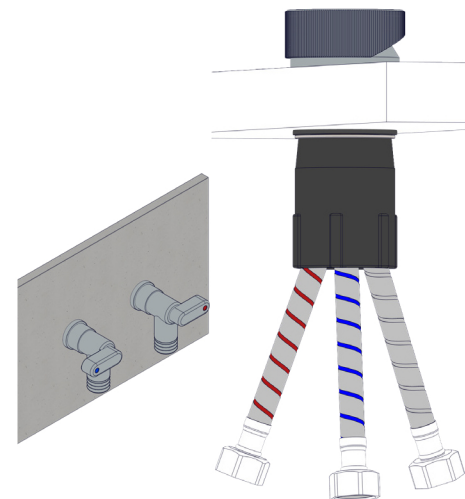
Tighten firmly.



- 3** Feed Hoses from bottom through 35mm Benchtop Hole.



- 6** Connect Marked Blue & Red Hoses to wall Outlets and connect Plain Hose to Chosen Hob Outlet.



recommended working pressure

150-500KPa

maximum hot water temperature

75 degrees

