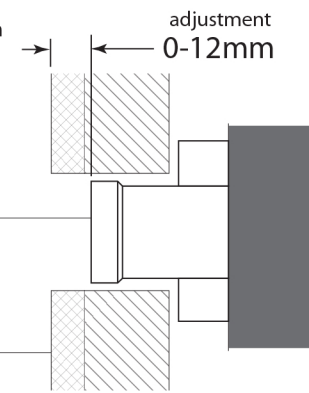


### BREACH SET-UP

Ensure that seats in the Breach are in good condition and are free of foreign objects.



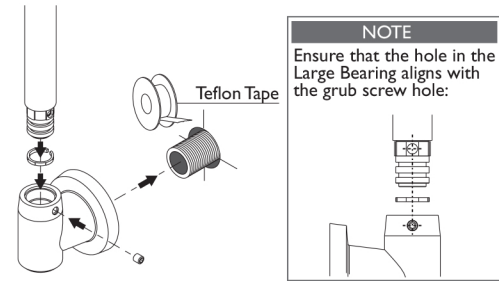
adjustment  
0-12mm

Breach

Front Wall Surface

**1**

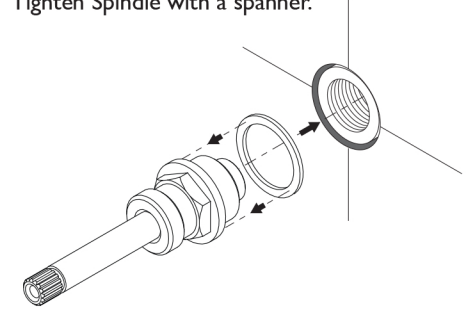
- Apply Teflon Tape to Threaded Elbow.
- Firmly screw the Swivel Flange onto Threaded Elbow.
- Seat the Small Bearing inside the Swivel Flange.
- Push Spout Tail into the Swivel Flange.
- Fasten Grub Screw until tight and then loosen a quarter turn.



**2**

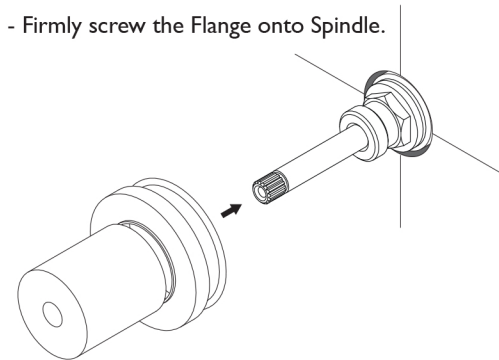
Fit Fibre Washer to Spindle and then firmly screw Spindle into the Breach.

Tighten Spindle with a spanner.



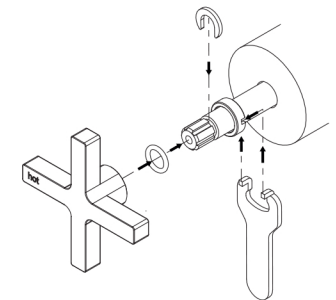
**3**

- Fit O-Ring into the groove on the back of the Dress Ring
- Fit the Dress Ring Over the Spindle.
- Firmly screw the Flange onto Spindle.



**4**

- Fit the Handle Screw over the Spindle Arm.
- Fit the C-Clip into the groove in the Spindle Arm.
- Fit the O-Ring then the Handle onto the Spindle Arm.
- Fasten the Handle Screw using the Spanner provided.



recommended working pressure

**150-500 KPa**

maximum hot water temperature

**75 degrees**

