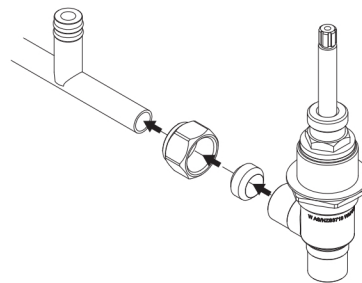


### 1

- Measure centre distance between holes in basin top and cut the T-Piece to required length.
- Remove Handle Screw, Handle, O-Ring, C-Clip, Flange, Top Locknut and one Washer.
- Fit Nuts and Plastic Olives to each end of the T-Piece, connect to the Tap Bodies and fasten Nuts.

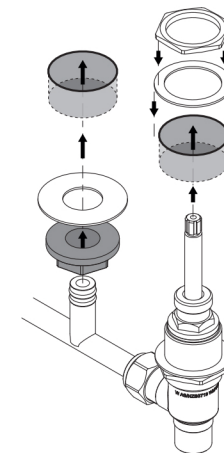
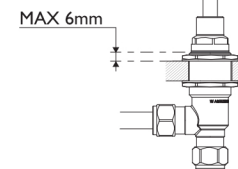


### 2

- Push Assembly up through the holes in the Basin Top.
- Fasten both Tap Bodies using the Locknuts.

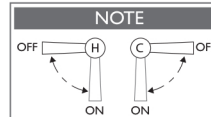
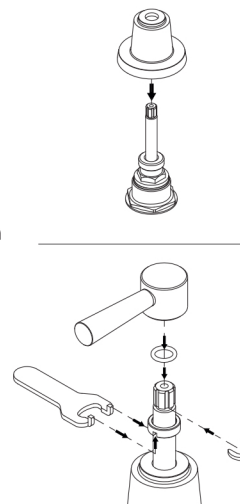
#### PLEASE NOTE

Adjust the Top and Bottom Locknuts to ensure the Red Fibre Washer sits at a maximum of 6mm above the Basin Top, as shown:



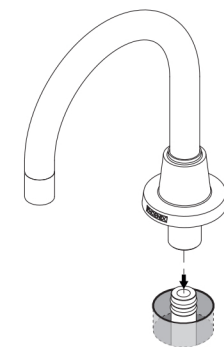
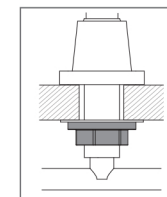
### 3

- Firmly screw on the Flanges to Tap Bodies
- Ensure that both Taps are in the closed position.
- Fit the Handle Screw over the Spindle Arm.
- Fit the C-Clip into the groove in the Spindle Arm.
- Fit the O-Ring then the Handle onto the Spindle Arm.
- Fasten the Handle Screw using the Spanner provided.



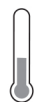
### 4

- Push Spout onto T-Piece.
- Firmly fasten Spout Locknut.
- Connect to water supply
- Test and Check for leaks



recommended working pressure

**150-500 KPa**



maximum hot water temperature

**75 degrees**