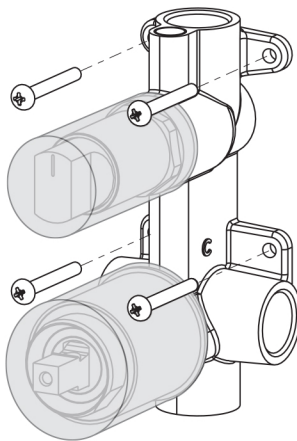


1

Screw the diverter mixer assembly in place. Attach water supplies.

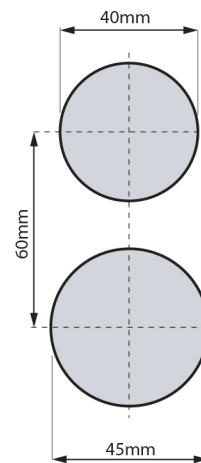
Test and check for leaks

Do not remove Protective Covers until final fit-off.



2

Cut a 40mm hole and a 45mm hole in cement sheet and tiles, 60mm apart, as shown.



CARTRIDGE REPLACEMENT

Removing Diverter:

- Remove the dress plate.
- Remove the diverter shroud with a 27mm tube spanner.
- Remove the plastic spacer.
- Release grub screws.
- Remove the diverter button.
- Release the screw. Remove the adaptor.
- Remove the diverter cartridge with a 21mm tube spanner.

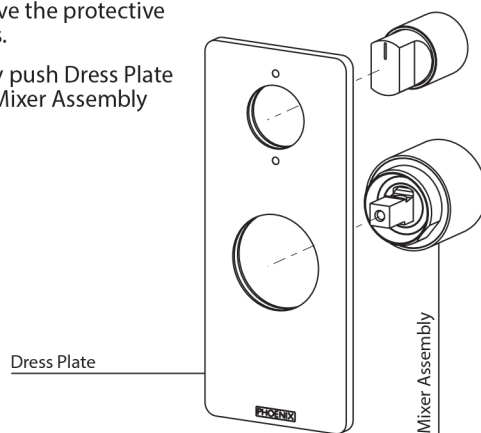
Installing Diverter:

- Install the diverter shroud with a 27mm tube spanner.
- Push the dress plate back to position.
- Fasten grub screws and fit the plastic spacer to position.
- Fasten the screw to secure Spindle Adaptor on the spindle.
- Turn spindle Anti-Clockwise until it stops.
- Push on Diverter Button.
- Fasten New Diverter Cartridge with the tube spanner.

3

Remove the protective covers.

Gently push Dress Plate onto Mixer Assembly

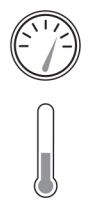
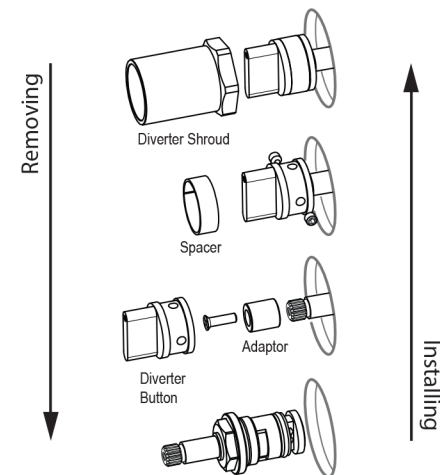
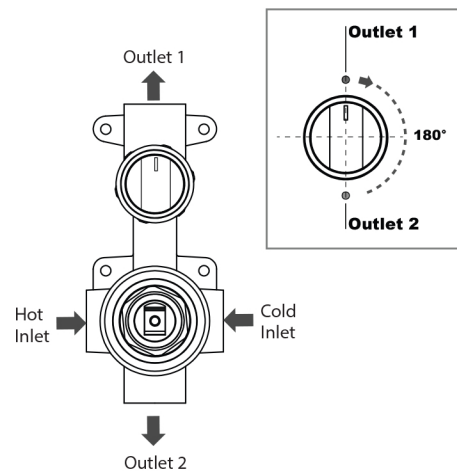
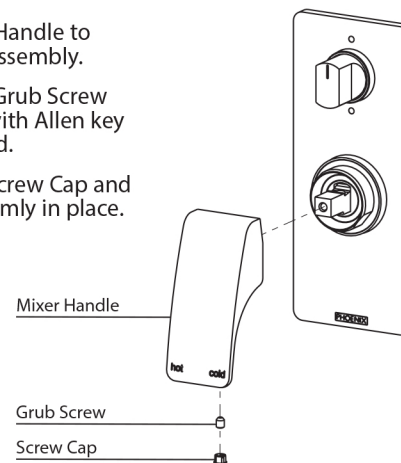


4

Attach Handle to Mixer Assembly.

Fasten Grub Screw firmly with Allen key supplied.

Insert Screw Cap and press firmly in place.



recommended working pressure
150-500 KPa
maximum hot water temperature
75 degrees