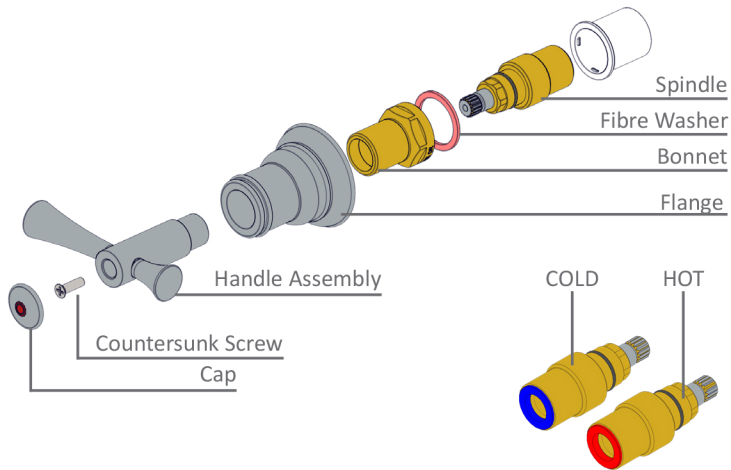
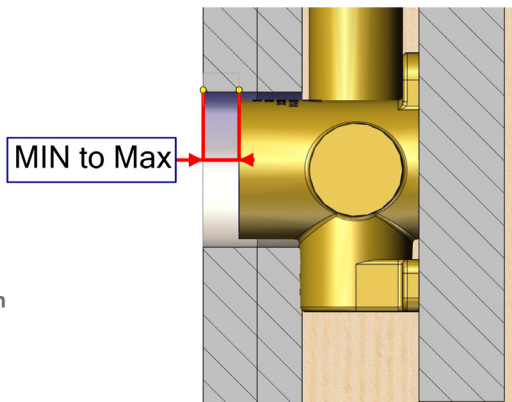


EXPLODED



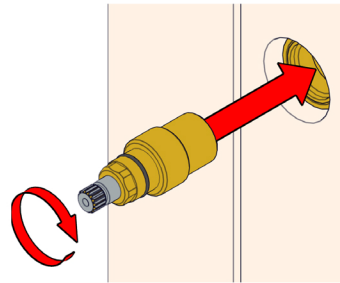
ADJUSTMENT RANGE



**134-0600 -
Wall Top Assembly:**
Min: 0mm
Max: 15mm

**134-0670 -
Wall Top Assembly Ext'd 15mm**
Min: 15mm
Max: 30mm

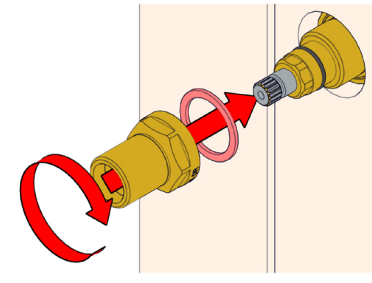
1



Screw Cartridge Body into recess till Cartridge Seat meets a physical stop.

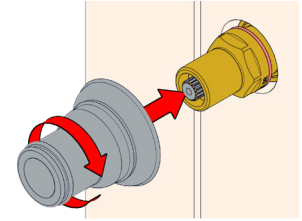
Do not over tighten.

2



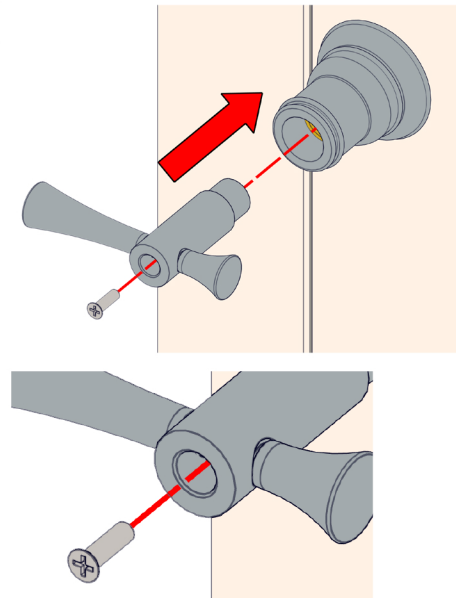
Fit Fibre Washer around the Spindle and then firmly fasten the Bonnet onto the Spindle using a spanner.

3



Screw Flange to the Bonnet until flush with wall.

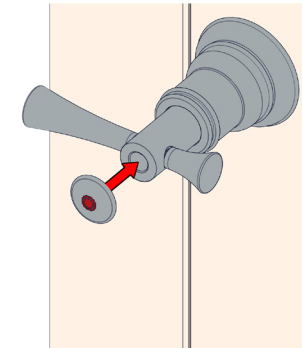
4



Fit Handle Assembly over spline. Ensuring Handles are level.

Fix to cartridge using supplied countersunk screws.

5



Push temperature indicator caps onto handles as shown.



recommended
working pressure
**150-
500KPa**
maximum hot
water temperature
**75
degrees**