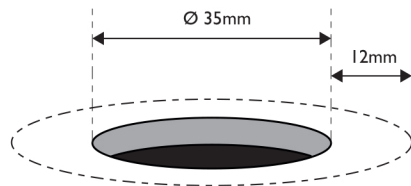


1

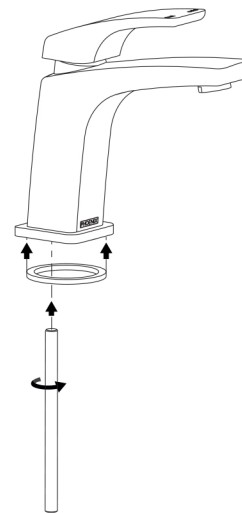
Cut a mounting hole 35mm in diameter. There must be a minimum 12mm width of flat around the hole.



2

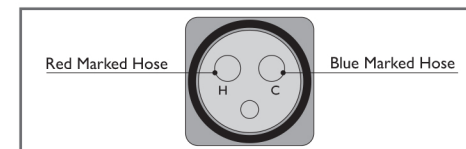
Fit the Ring Gasket into the groove under the Dress Plate.

Screw the Threaded Rod into the Mixer Body.



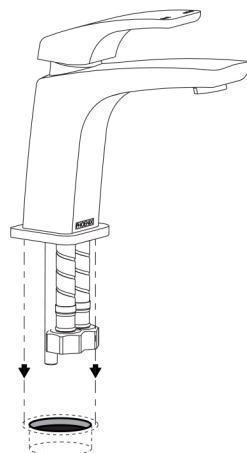
3

Screw the Red Marked Hose into the hole marked 'H' and the Blue Marked Hose into the hole marked 'C'.



4

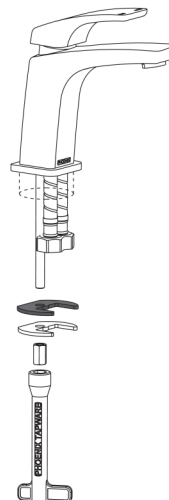
Feed the Hoses and Rod through the mounting hole and place mixer into position.



5

Underneath the Mounting Hole, feed the Rubber Mounting Gasket then the Mounting Plate onto the Threaded Rod.

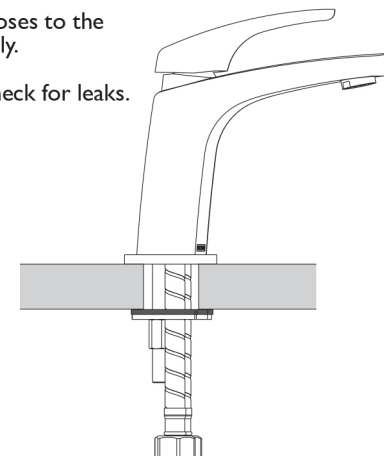
Firmly fasten the Lock Nut using the provided Lock Nut Spanner.



6

Connect hoses to the water supply.

Test and check for leaks.



recommended working pressure

**150-500 KPa**



maximum hot water temperature

**75 degrees**