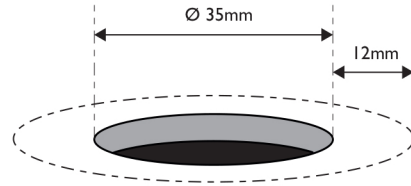
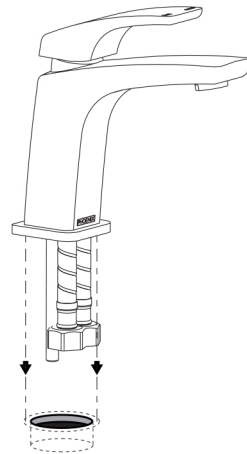

1

Cut a mounting hole 35mm in diameter. There must be a minimum 12mm width of flat around the hole.


4

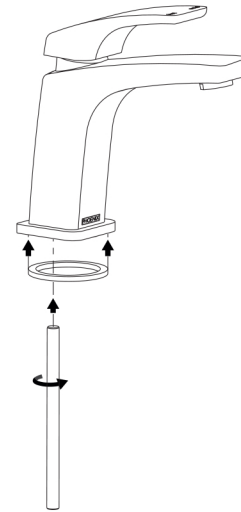
Feed the Hoses and Rod through the mounting hole and place mixer into position.


2

Locate Dress Plate to Mixer Body

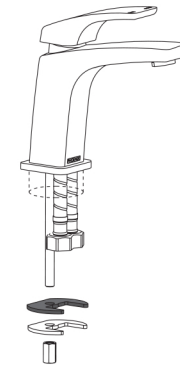
Fit the Ring Gasket into the groove under the Dress Plate.

Screw the Threaded Rod into the Mixer Body.

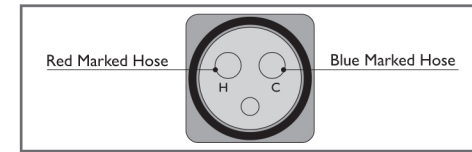
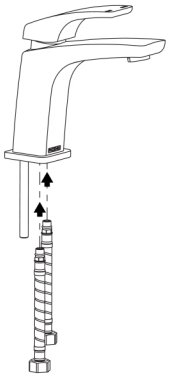

5

Underneath the Mounting Hole, feed the Rubber Mounting Gasket then the Mounting Plate onto the Threaded Rod.

Firmly fasten the Locknut using the provided Locknut Spanner.

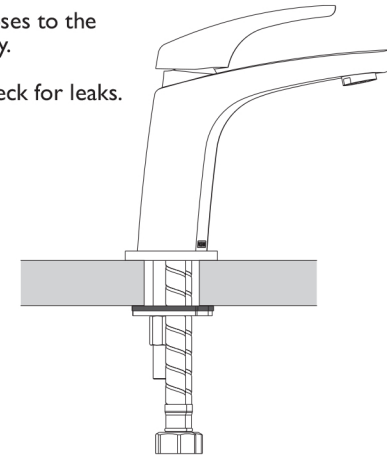

3

Screw the Red Marked Hose into the hole marked 'H' and the Blue Marked Hose into the hole marked 'C'.

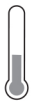

6

Connect hoses to the water supply.

Test and check for leaks.



recommended working pressure
150-500 KPa



maximum hot water temperature
75 degrees