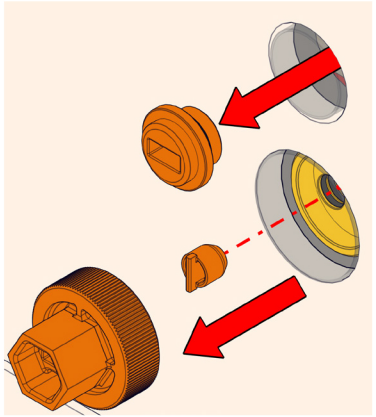


1



Remove Test Caps with a flat head screwdriver or spanner.

Ensure that no Test Plugs are in Body.

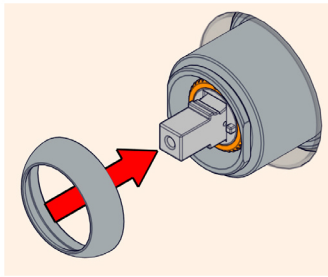
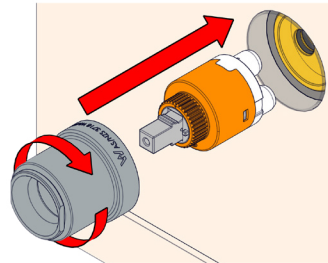
2

Add grease or soap to Cartridge Legs. Push Cartridge gently Into Body. Ensure correct orientation.

Cartridge only fits in one orientation.

Firmly fasten Cartridge Sleeve to Mixer Body using a shifting spanner.

Tighten Mixer Dome to Cartridge Locknut.



3

-Install Diverter Cartridge.

-Install Cartridge Sleeve.

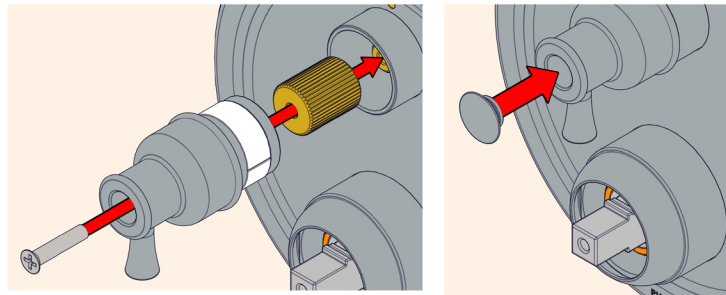
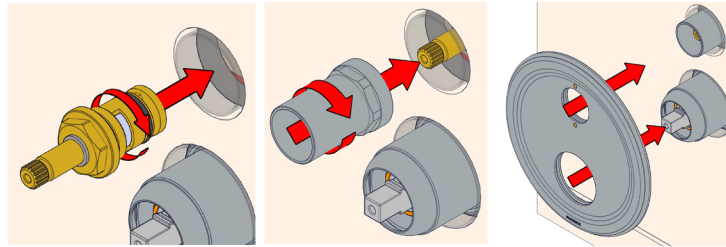
-Gently push Dress Plate over assembly.

-Using Spindle Adaptor turn diverter until physical stop.

-Tighten supplied screw securing handle and Spindle Adaptor to Cartridge. Ensure pin is in in correct orientation.

-Push Diverter Cap onto Handle.

(To replace Cartridge follow steps in reverse.)



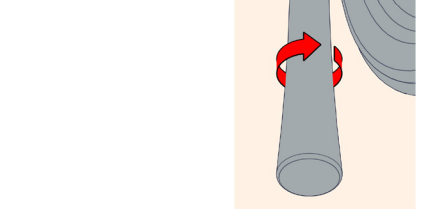
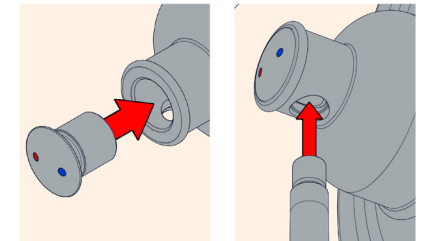
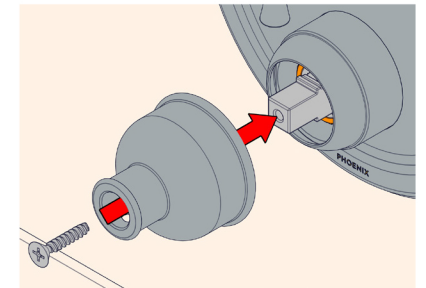
4

Push Handle onto Cartridge.

Tighten Screw into Cartridge securing Handle.

Push Handle Cap into position. Ensuring correct orientation.

Tighten Pin into position.



recommended working pressure

**150-500KPa**

maximum hot water temperature

**75 degrees**