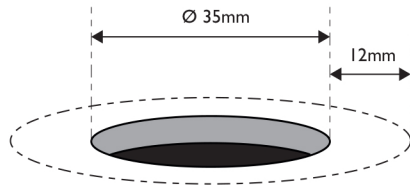


**1**

Cut a mounting hole 35mm in diameter. There must be a minimum 12mm width of flat around the hole.

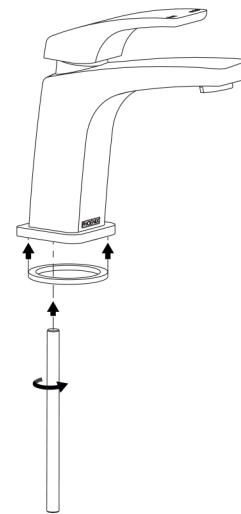


**2**

Locate Dress Plate to Mixer Body

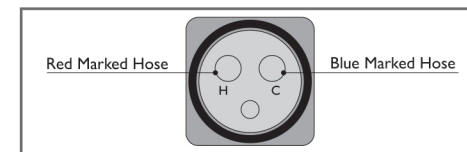
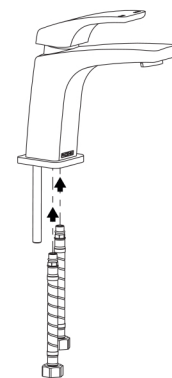
Fit the Ring Gasket into the groove under the Dress Plate.

Screw the Threaded Rod into the Mixer Body.



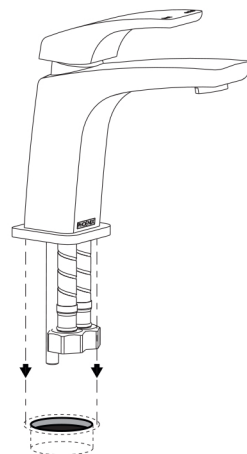
**3**

Screw the Red Marked Hose into the hole marked 'H' and the Blue Marked Hose into the hole marked 'C'.



**4**

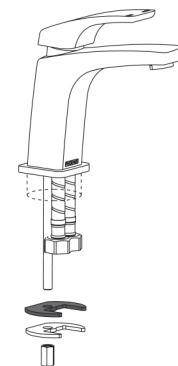
Feed the Hoses and Rod through the mounting hole and place mixer into position.



**5**

Underneath the Mounting Hole, feed the Rubber Mounting Gasket then the Mounting Plate onto the Threaded Rod.

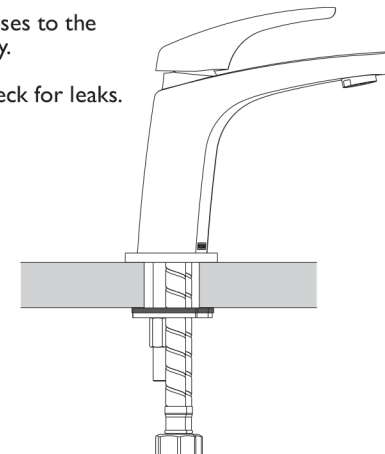
Firmly fasten the Locknut using the provided Locknut Spanner.



**6**

Connect hoses to the water supply.

Test and check for leaks.



recommended working pressure  
**150-500 KPa**



maximum hot water temperature  
**75 degrees**