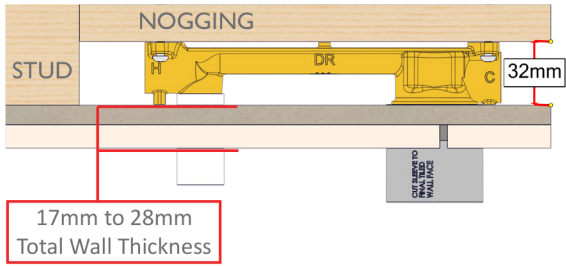


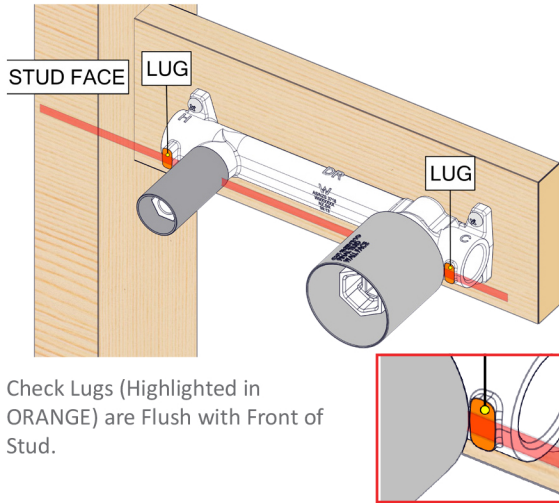
ADJUSTMENT RANGE



Range from the Nogging face to the Stud Face is 32mm as shown.

Adjustment range from the finished face of the tiles to the stud is 17mm to 28mm as shown.

Check Wall Mixer Lugs are Flush to Stud to allow for installation of sheet and tiles



Check Lugs (Highlighted in ORANGE) are Flush with Front of Stud.

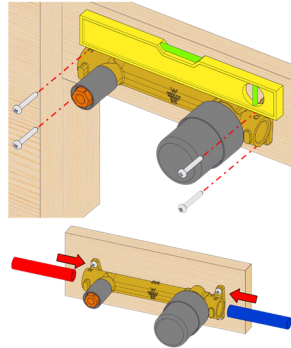
1

Screw the Mixer Breach onto Nogging to dimensions shown in adjustment range.

Ensure that the mixer body is level.

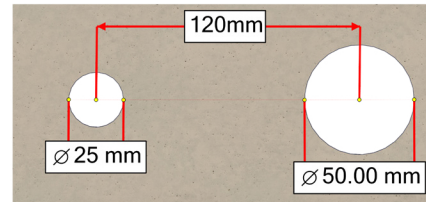
Plumb all connections to Mixer Body.

Perform **PRESSURE TEST** and check for leaks.

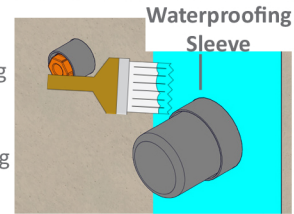


2

Check centre distance of the breach assembly is 120mm. Create a 25mm hole and a 50mm hole on the sheet and tiles, as shown.



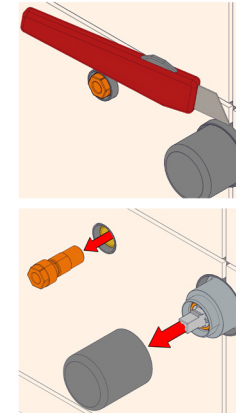
Apply waterproofing membrane up to Waterproofing Sleeve.



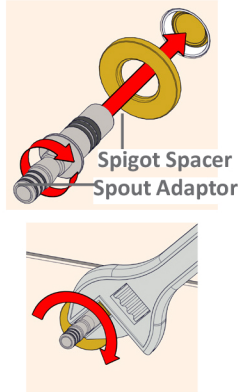
3

After Tiling use Knife to Trim Waterproofing Sleeve flush to Tile face.

Remove Protective Cover and Outlet Test Cap.

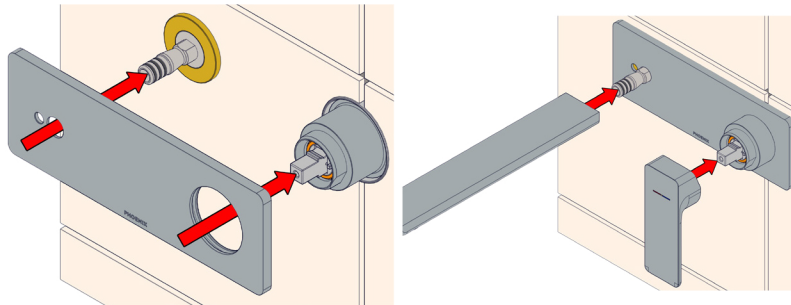


4

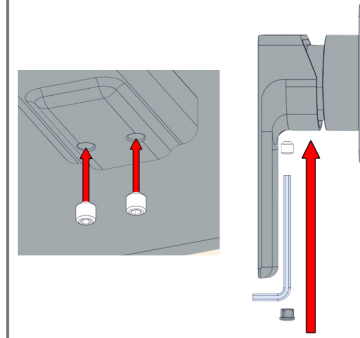


Install Spout Adaptor ensuring it presses spigot spacer against wall. Tighten using spanner.

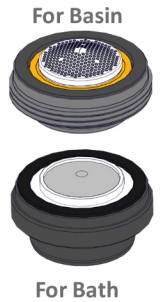
5



6



7



recommended working pressure

150-500KPa

maximum hot water temperature

75 degrees