

ASSEMBLY INSTRUCTIONS

PAGE: 1/7

MODEL : SALEM BUFFET



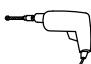
Before you begin, please follow assembly instructions carefully, then follow them step by step.

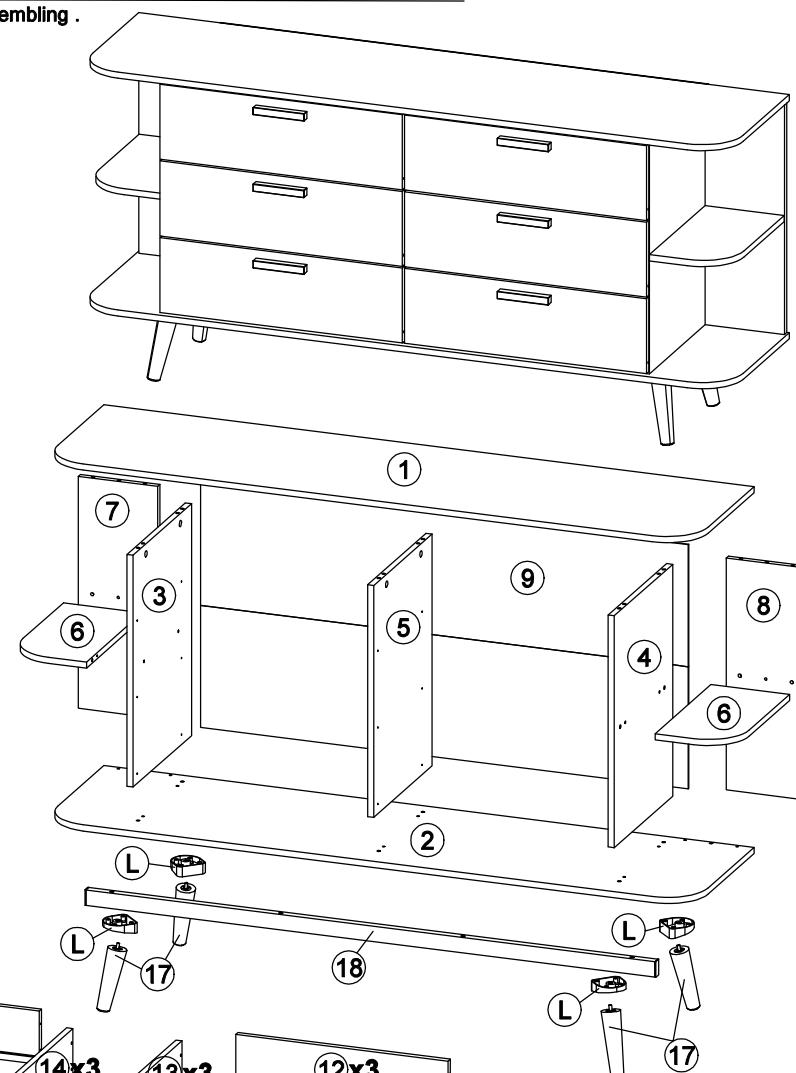
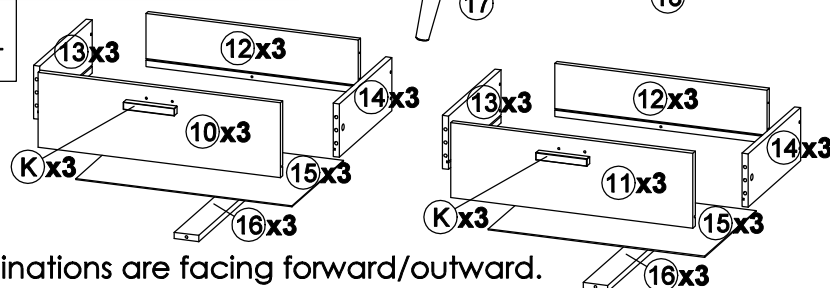
Read instruction carefully . See Furniture Parts list and Hardware List for guidance . Be sure you have all parts before you start assembling .
Place and assemble furniture on a clean flat soft surface , such as carpet or rug to prevent being scratched .

PART LIST		QTY
1	TOP PANEL	1 PC
2	BOTTOM PANEL	1 PC
3	SIDE PANEL (L)	1 PC
4	SIDE PANEL (R)	1 PC
5	CENTER PANEL	1 PC
6	MIDDLE PANEL (L/R)	2 PCS
7	BACK SUPPORT (L)	1 PC
8	BACK SUPPORT (R)	1 PC
9	BACK PANEL	1 PC
10	DRAWER FRONT (L)	3 PCS
11	DRAWER FRONT (R)	3 PCS
12	DRAWER BACK	6 PCS
13	DRAWER SIDE (L)	6 PCS
14	DRAWER SIDE (R)	6 PCS
15	DRAWER BOTTOM	6 PCS
16	DRAWER BONE	6 PCS
17	CABINET LEG	4 PCS
18	METAL SUPPORT	1 PC

HARDWARE					
A	MINI FIX	A1	A2	A3	34 SETS
B	M8 X 30MM WOOD DOWEL				48 PCS
C	M6 X 50MM CSK CAP WOOD SCREW				16 PCS
D	ALLEN KEY M4				1 PC
E	M3.5 X 16MM C.B SCREW				72 PCS
F	M4 X 20MM C.B SCREW				16 PCS
G	M4 X 32MM C.B SCREW				12 PCS
H	M4 X 38MM C.B SCREW				24 PCS
I	5/8 NAIL				22 PCS
J	JCBC SCREW M6 X 50MM				4 PCS
K	WOOD HANDLE (126MM)				6 PCS
L	SUPPORT LEG MT81				4 PCS
M	14" DRAWER SLIDE	M1 (L/R)	M2 (L/R)		6 SETS
N	TIPPING PACK WITHOUT A1	N1	N3	N5	2 SETS

SELF-PREPARED TOOLS: Tools below are NOT included in package.

	SCREWDRIVER		HAMMER
	POWER DRILL		



Reminder:

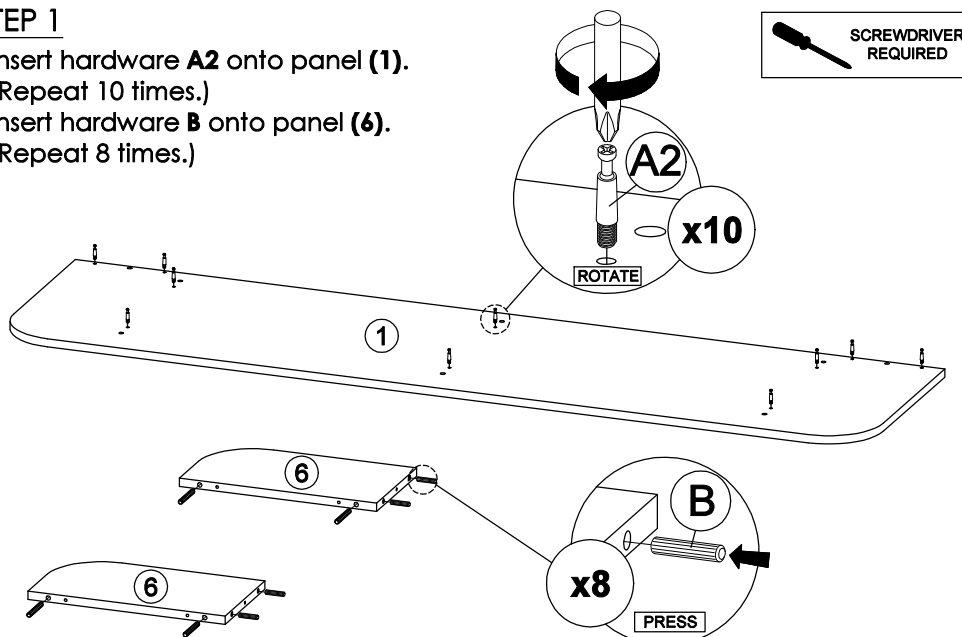
Please ensure that all surfaces and edges with colours/laminations are facing forward/outward.

ASSEMBLY INSTRUCTIONS

PAGE: 2/7

STEP 1

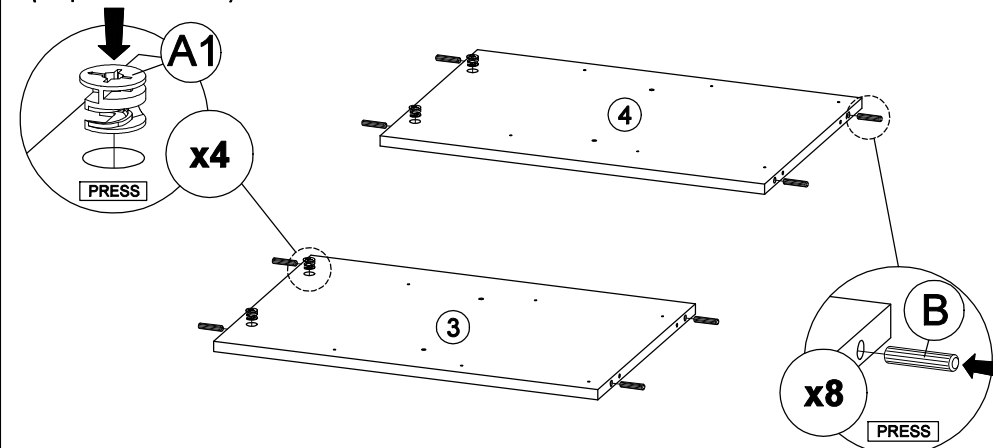
- Insert hardware **A2** onto panel **(1)**.
(Repeat 10 times.)
- Insert hardware **B** onto panel **(6)**.
(Repeat 8 times.)



MODEL : SALEM BUFFET

STEP 2

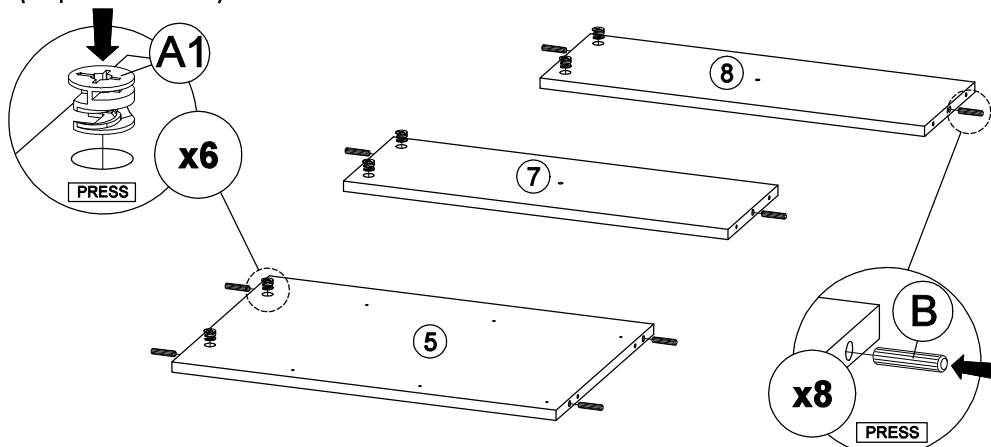
- Insert hardware **A1** onto panel **(3)** and **(4)**.
(Repeat 4 times.)
- Insert hardware **B** onto panel **(3)** and **(4)**.
(Repeat 8 times.)



* Ensure the arrows on hardware **A1** point towards mounting positions.

STEP 3

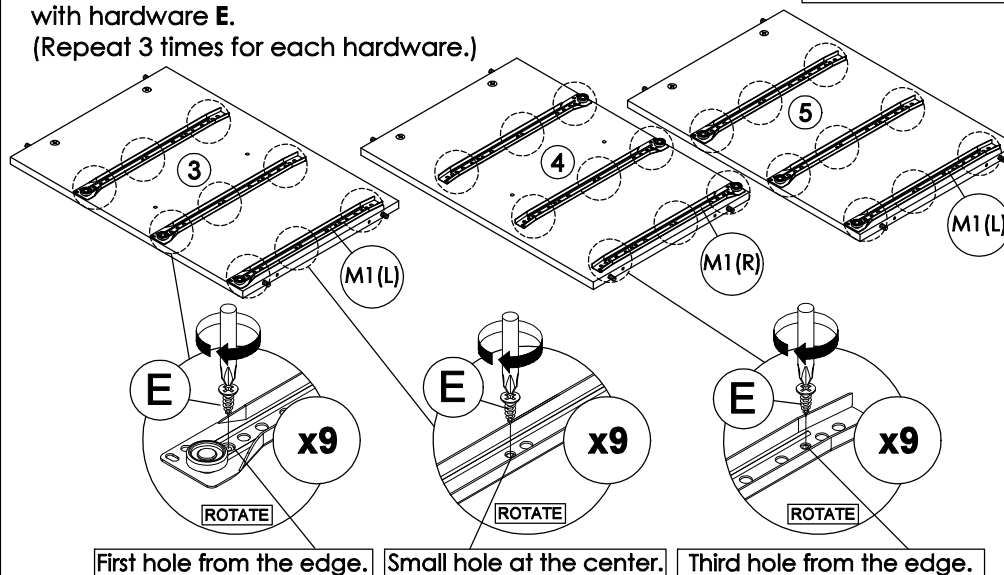
- Insert hardware **A1** onto panel **(5)**, **(7)** and **(8)**.
(Repeat 6 times.)
- Insert hardware **B** onto panel **(5)**, **(7)** and **(8)**.
(Repeat 8 times.)



* Ensure the arrows on hardware **A1** point towards mounting positions.

STEP 4

- Fix hardware **M1 (L/R)** into panel **(3)**, **(4)** and **(5)** with hardware **E**.
(Repeat 3 times for each hardware.)

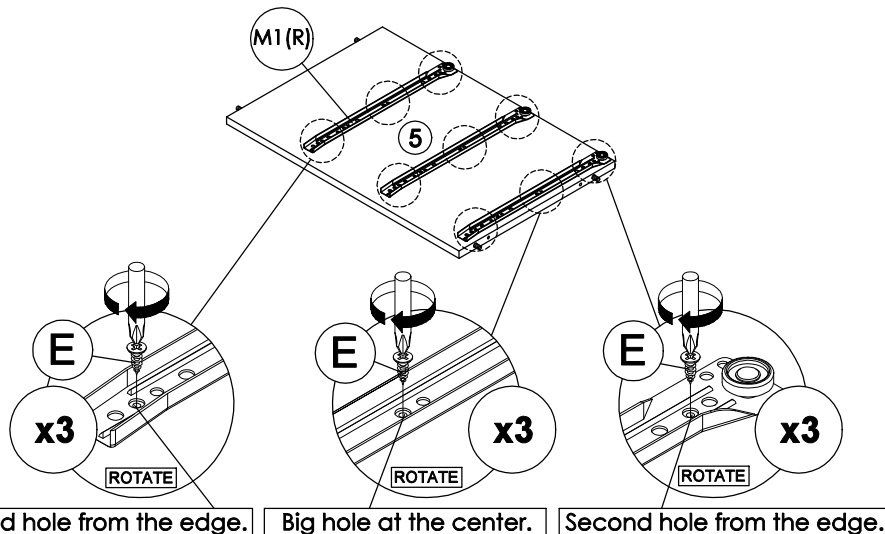


ASSEMBLY INSTRUCTIONS

PAGE: 3/7

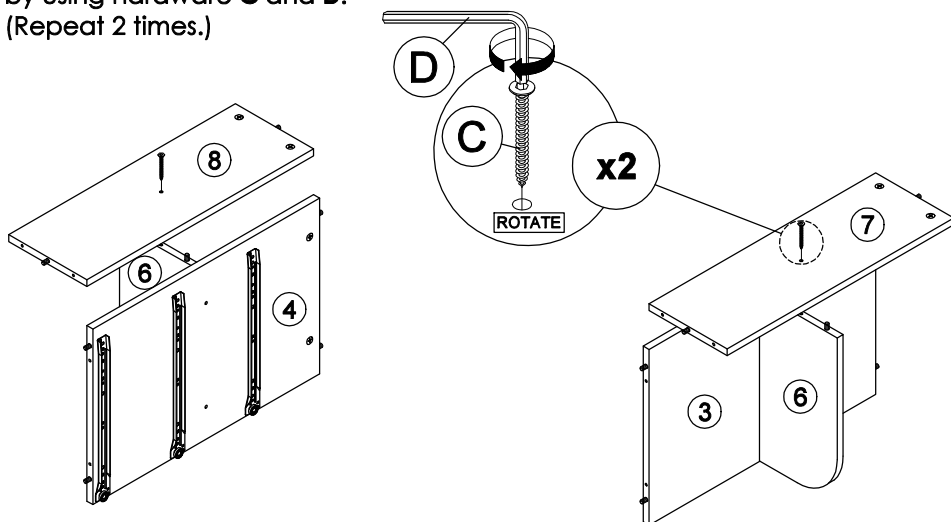
STEP 5

- Fix hardware **M1 (R)** into panel **(5)** with hardware **E**.
(Repeat 3 times for each hardware.)



STEP 7

- Connect panel **(7)** and **(8)** to panel **(6)**
by using hardware **C** and **D**.
(Repeat 2 times.)

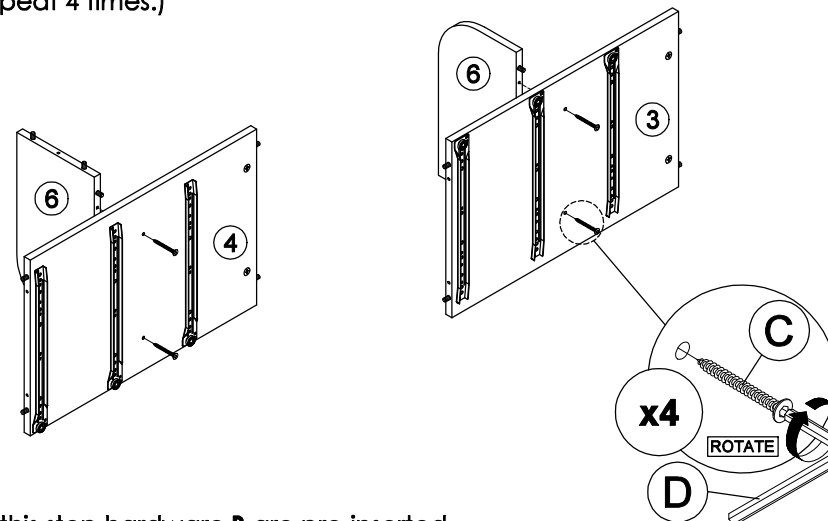


* In this step hardware **B** are pre-inserted.

MODEL : SALEM BUFFET

STEP 6

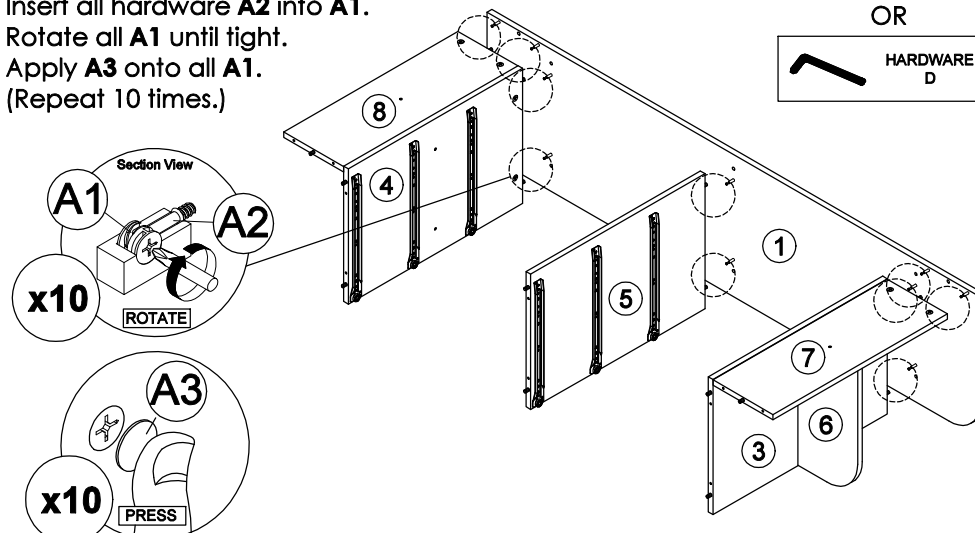
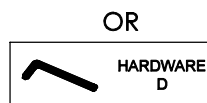
- Connect panel **(3)** and **(4)** to panel **(6)**
by using hardware **C** and **D**.
(Repeat 4 times.)



* In this step hardware **B** are pre-inserted.

STEP 8

- Attach panel **(1)** to panel **(3)**, **(4)**, **(5)**, **(7)** and **(8)**.
- Insert all hardware **A2** into **A1**.
- Rotate all **A1** until tight.
- Apply **A3** onto all **A1**.
(Repeat 10 times.)



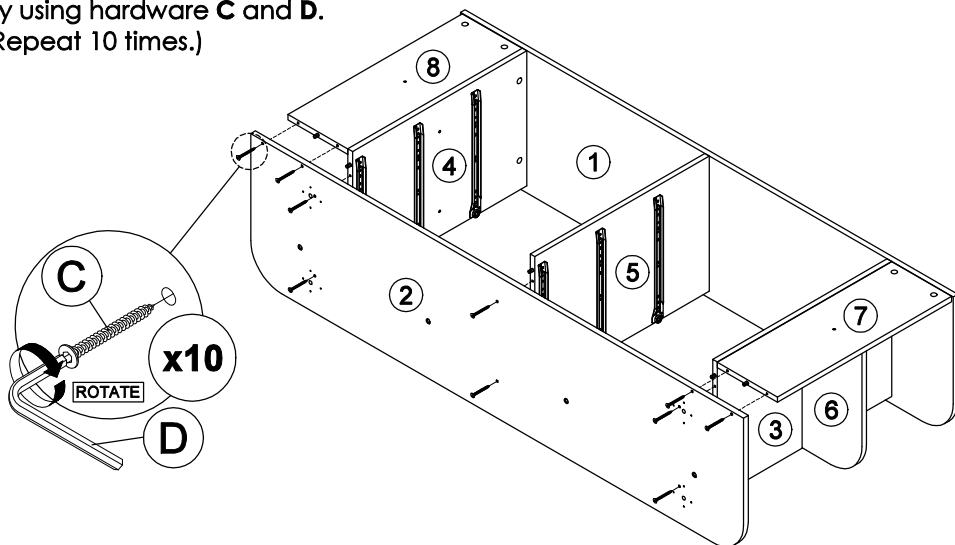
* In this step hardware **A1**, **A2** and **B** are pre-inserted.

ASSEMBLY INSTRUCTIONS

PAGE: 4/7

STEP 9

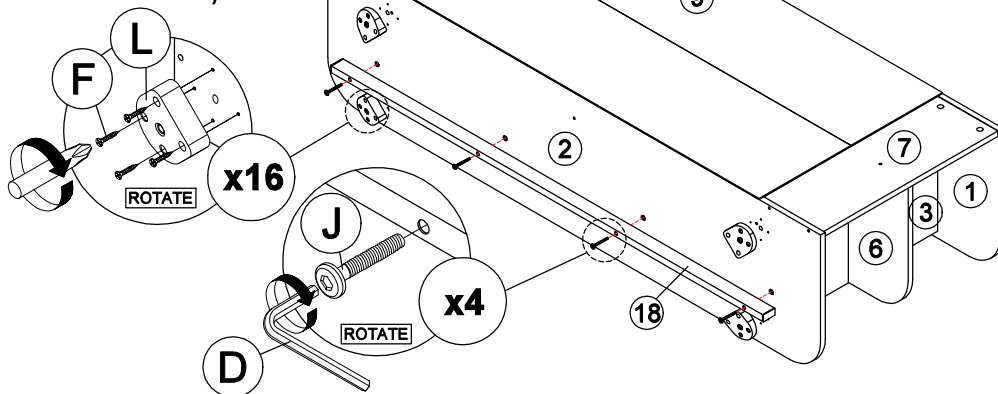
- Connect panel (2) to panel (3), (4), (5), (7) and (8) by using hardware C and D. (Repeat 10 times.)



* In this step hardware B are pre-inserted.

STEP 11

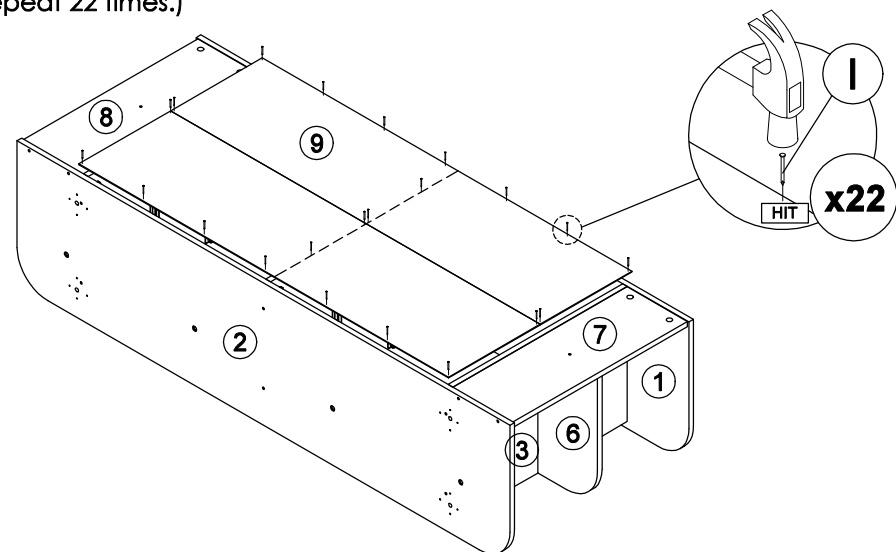
- Connect Metal Support (18) to panel (2) by using hardware D and J. (Repeat 4 times.)
- Fix hardware L into panel (2) by using hardware F. (Repeat 4 times for each hardware.)



MODEL : SALEM BUFFET

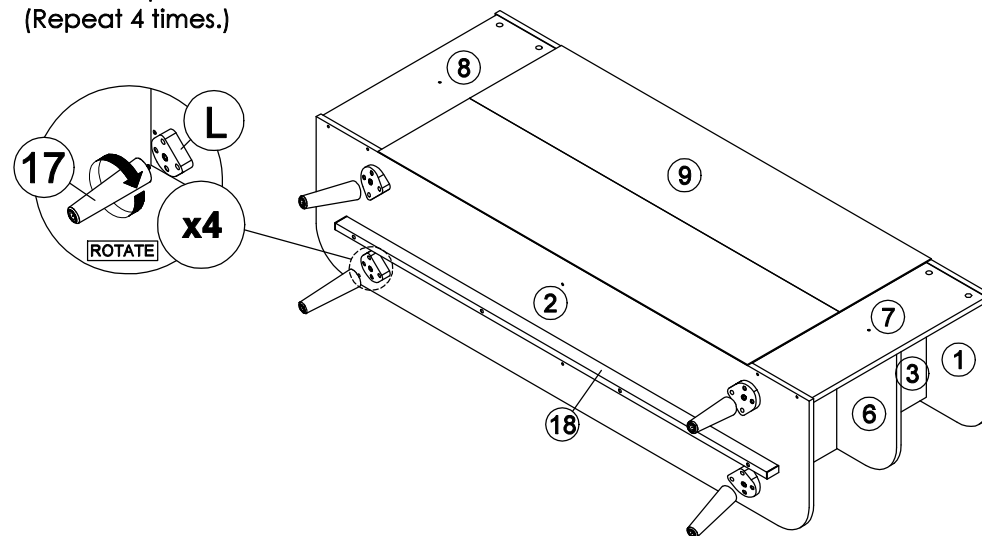
STEP 10

- Assemble panel (9) to entire body with hardware I. (Repeat 22 times.)



STEP 12

- Assemble part 17 into hardware L. (Repeat 4 times.)

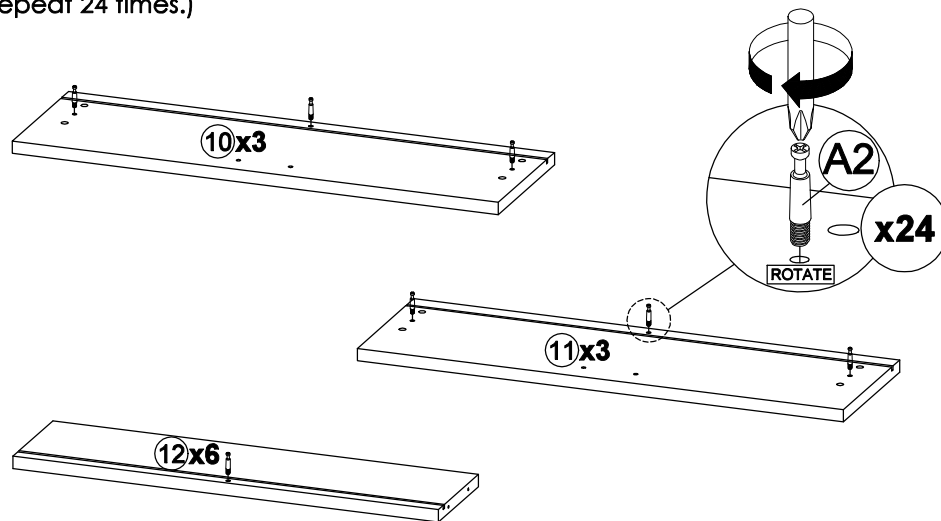


ASSEMBLY INSTRUCTIONS

PAGE: 5/7

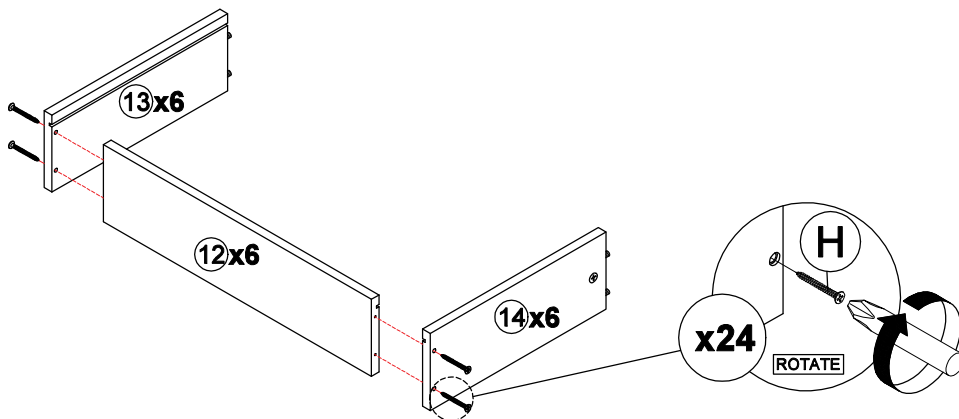
STEP 13

- Insert hardware **A2** onto panel **(10)**, **(11)** and **(12)**.
(Repeat 24 times.)



STEP 15

- Assemble panel **(13)** and **(14)** with panel **(12)** by using hardware **H**.
(Repeat 4 times for each drawers.)

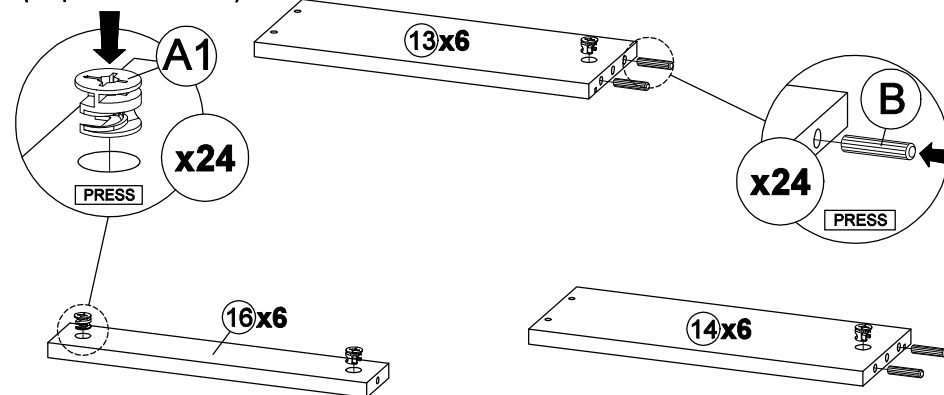


* In this step only show one of the drawers.

MODEL : SALEM BUFFET

STEP 14

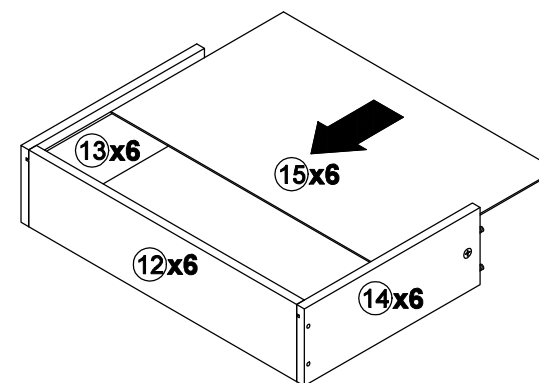
- Insert hardware **A1** onto panel **(13)**, **(14)** and **(16)**.
(Repeat 24 times.)
- Insert hardware **B** onto panel **(13)** and **(14)**.
(Repeat 24 times.)



* Ensure the arrows on hardware **A1** point towards mounting positions.

STEP 16

- Insert panel **(15)** along the slot.
(Repeat 1 times for each drawers.)



* In this step only show one of the drawers.

ASSEMBLY INSTRUCTIONS

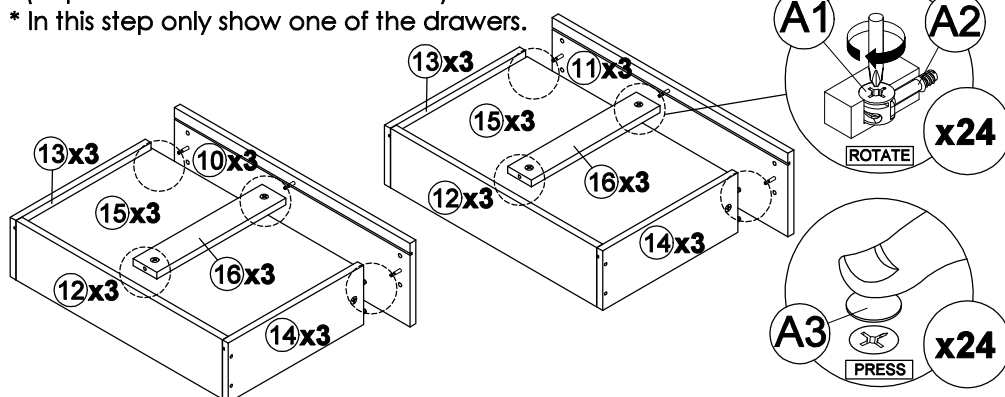
PAGE: 6/7

STEP 17

- Attach panel (16) to panel (12).
- Attach panel (10) and (11) to panel (13), (14) and (16).
- Insert all hardware A2 into A1.
- Rotate all A1 until tight.
- Apply A3 onto all A1.

(Repeat 4 times for each drawers.)

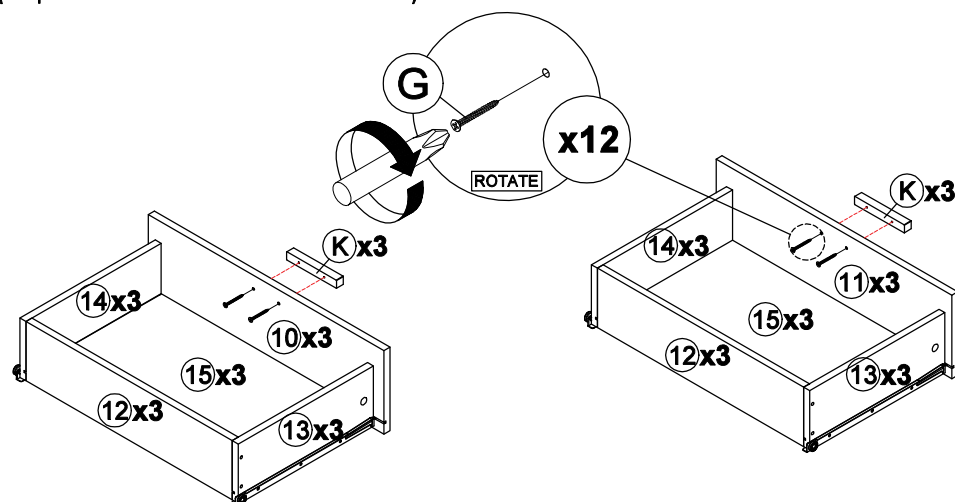
* In this step only show one of the drawers.



* In this step hardware A1, A2 and B are pre-inserted.

STEP 19

- Fix hardware K onto panel (10) and (11) by using hardware G.
- (Repeat 2 times for each drawers.)



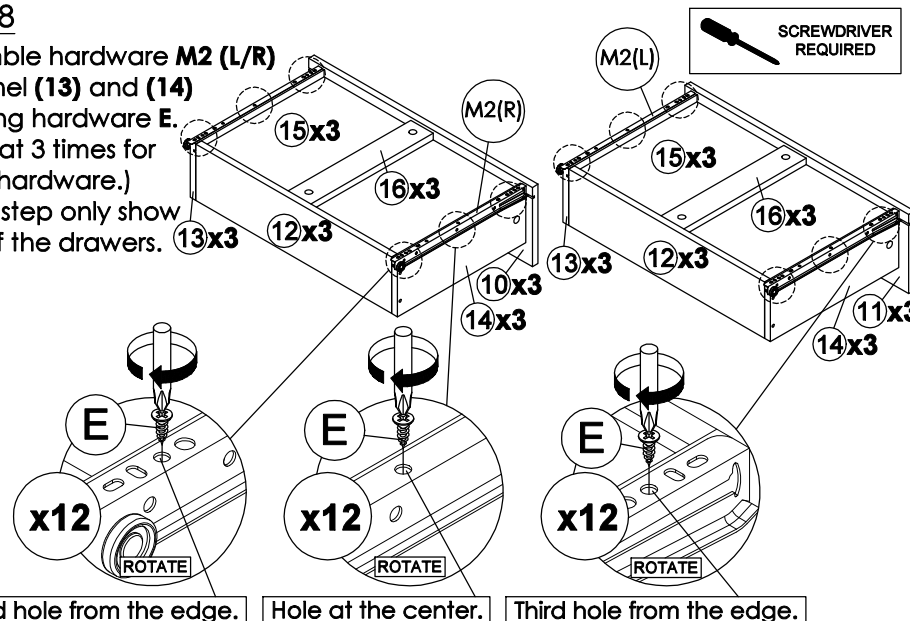
* In this step only show one of the drawers.

MODEL : SALEM BUFFET

STEP 18

- Assemble hardware M2 (L/R) to panel (13) and (14) by using hardware E.
- (Repeat 3 times for each hardware.)

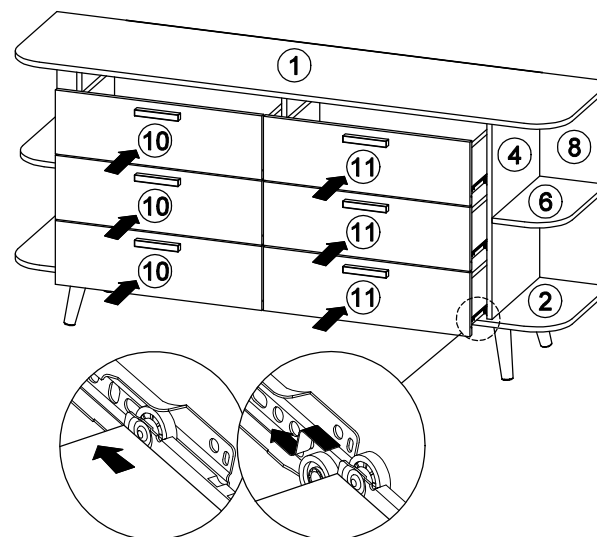
* In this step only show one of the drawers.



*Hardware M2 (L/R) shall be leaning against panel (10) or (11) when assembling.

STEP 20

- Put all the drawer in place along the drawer slides.

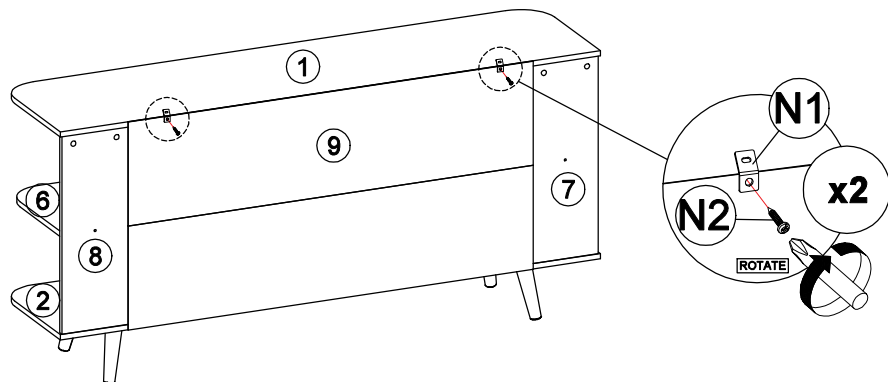


ASSEMBLY INSTRUCTIONS

PAGE: 7/7

STEP 21

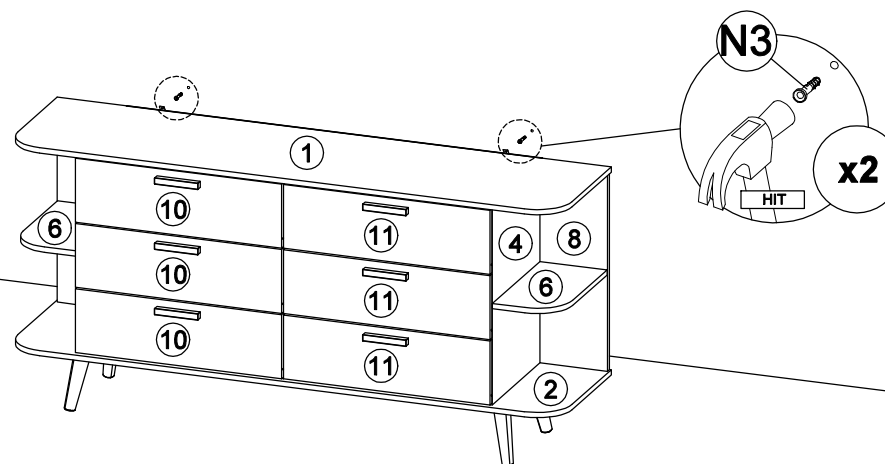
- Assemble hardware **N1** into panel **(9)** by using hardware **N2**.
(Repeat 2 times.)



MODEL : SALEM BUFFET

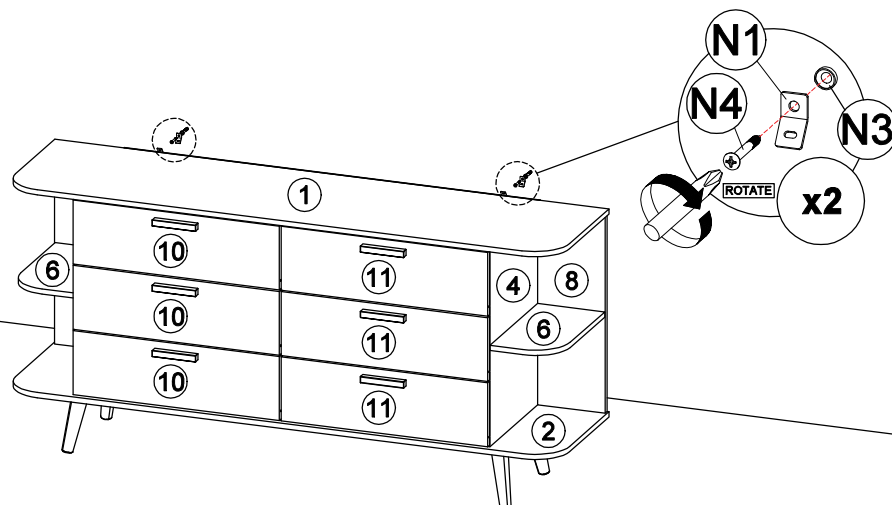
STEP 22

- Mark and use the power drill to drill a hole on the wall.
- Hit hardware **N3** into the wall.
(Repeat 2 times.)



STEP 23

- Assemble hardware **N1** to **N3** by using hardware **N4**.
(Repeat 2 times.)



STEP 24

- Connect both of the hardware **N1** by using hardware **N5**.
- Tighten the hardware **N5**.
(Repeat 2 times.)

