

ASSEMBLY INSTRUCTIONS

PAGE: 1/5

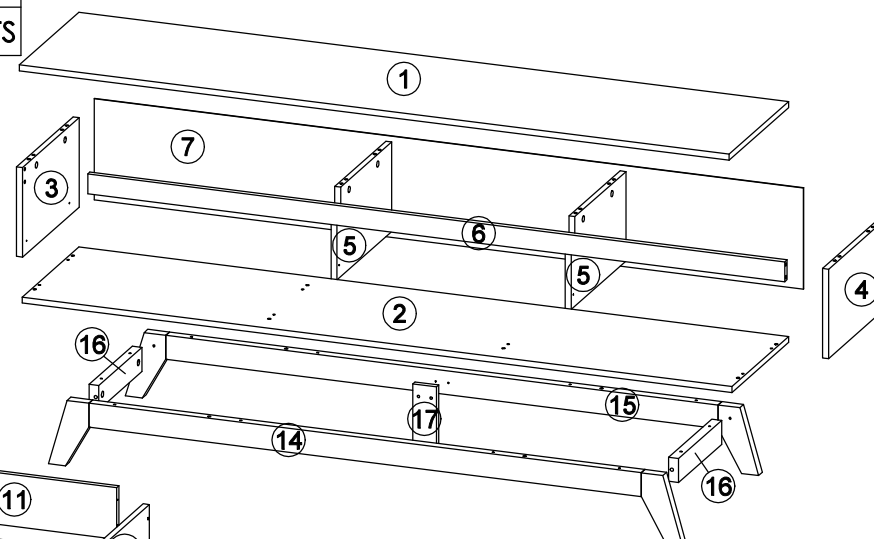
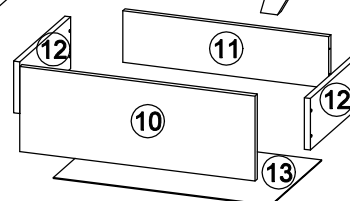
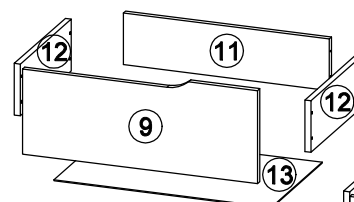
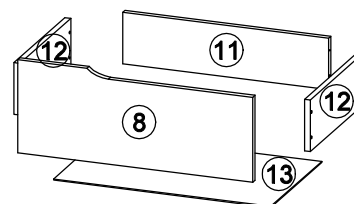
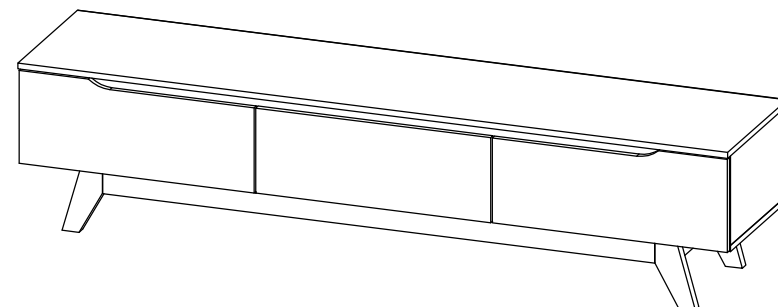
MODEL : JESSIE 1.8M TV UNIT

Before you begin, please follow assembly instructions carefully, then follow them step by step.

Read instruction carefully . See Furniture Parts list and Hardware List for guidance . Be sure you have all parts before you start assembling .
Place and assemble furniture on a clean flat soft surface , such as carpet or rug to prevent being scratched .

| PART LIST | | QTY |
|-----------|------------------|-------|
| 1 | TOP PANEL | 1 PC |
| 2 | BOTTOM PANEL | 1 PC |
| 3 | SIDE PANEL (L) | 1 PC |
| 4 | SIDE PANEL (R) | 1 PC |
| 5 | CENTER PANEL | 2 PCS |
| 6 | BONE PANEL | 1 PC |
| 7 | BACK PANEL | 1 PC |
| 8 | DRAWER FRONT (1) | 1 PC |
| 9 | DRAWER FRONT (2) | 1 PC |
| 10 | DRAWER FRONT (3) | 1 PC |
| 11 | DRAWER BACK | 3 PCS |
| 12 | DRAWER SIDE | 6 PCS |
| 13 | DRAWER BOTTOM | 3 PCS |
| 14 | APRON FRONT | 1 PC |
| 15 | APRON BACK | 1 PC |
| 16 | APRON SIDE | 2 PCS |
| 17 | CENTER LEG | 1 PC |

| HARDWARE | | | | | |
|----------|------------------------------|------------|------------|----|---------|
| A | MINI FIX | A1 | A2 | A3 | 12 SETS |
| B | M8 X 30MM WOOD DOWEL | | | | 24 PCS |
| C | M6 X 50MM CSK CAP WOOD SCREW | | | | 8 PCS |
| D | ALLEN KEY M4 | | | | 1 PC |
| E | M3.5 X 16MM C.B SCREW | | | | 36 PCS |
| F | M4 X 30MM C.B SCREW | | | | 2 PCS |
| G | M4 X 38MM C.B SCREW | | | | 38 PCS |
| H | 5/8 NAIL | | | | 60 PCS |
| I | 5/8 PVC NAIL LEG | | | | 5 PCS |
| J | 14" DRAWER SLIDE | J1 (L/R) | J2 (L/R) | | 3 SETS |



SELF-PREPARED TOOLS: Tools below are NOT included in package.



SCREWDRIVER



HAMMER

Reminder:

Please ensure that all surfaces and edges with colours/laminations are facing forward/outward.

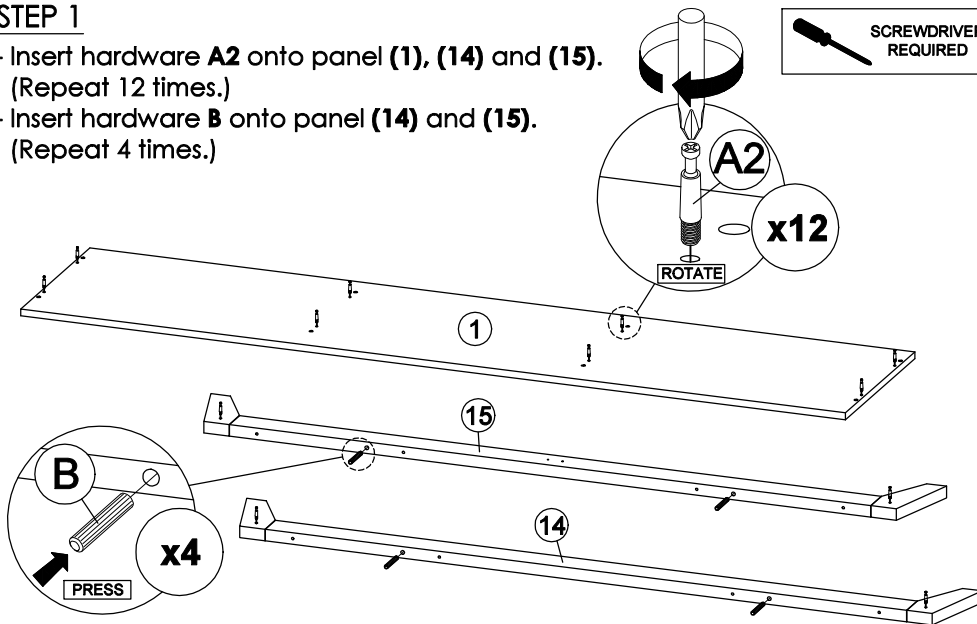
ASSEMBLY INSTRUCTIONS

PAGE: 2/5

MODEL : JESSIE 1.6M TV UNIT

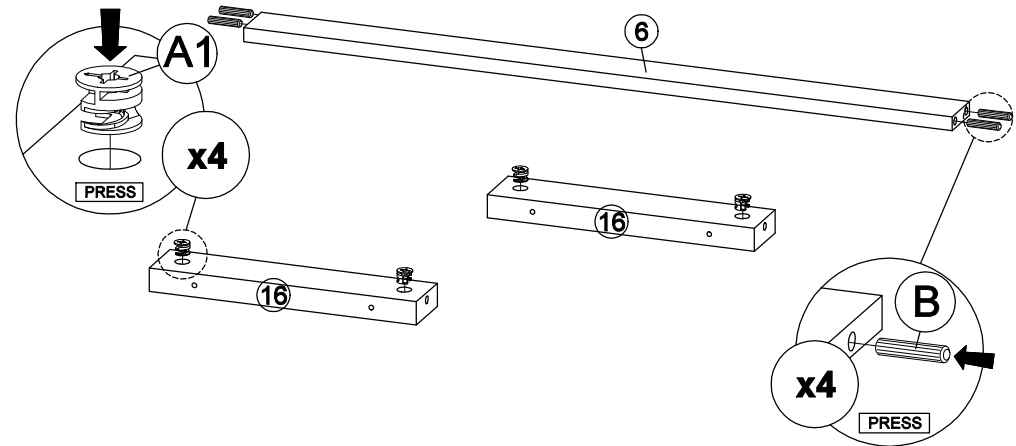
STEP 1

- Insert hardware **A2** onto panel (1), (14) and (15).
(Repeat 12 times.)
- Insert hardware **B** onto panel (14) and (15).
(Repeat 4 times.)



STEP 2

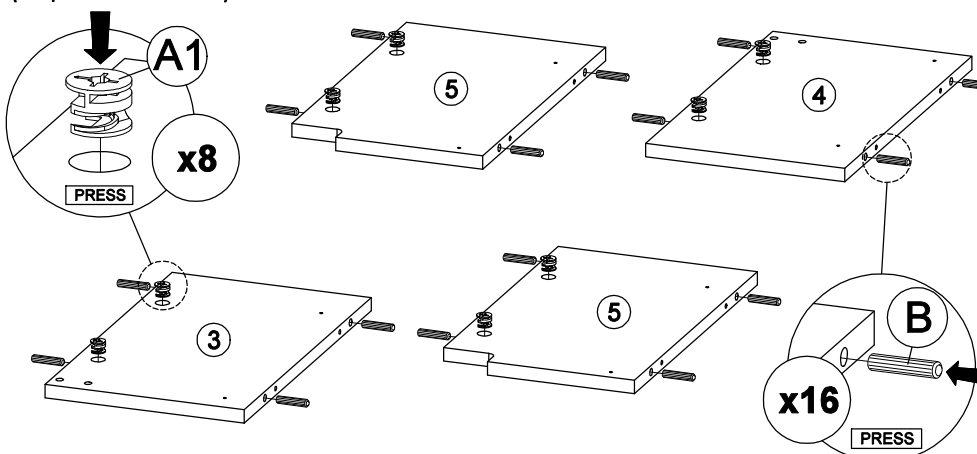
- Insert hardware **A1** onto panel (16).
(Repeat 4 times.)
- Insert hardware **B** onto panel (6).
(Repeat 4 times.)



* Ensure the arrows on hardware **A1** point towards mounting positions.

STEP 3

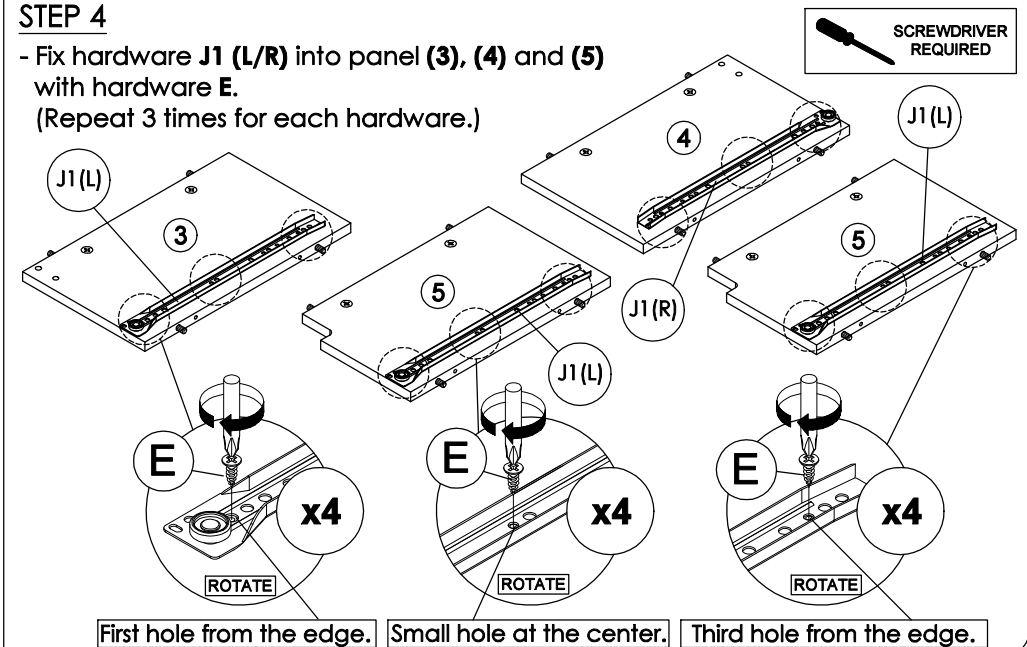
- Insert hardware **A1** onto panel (3), (4) and (5).
(Repeat 8 times.)
- Insert hardware **B** onto panel (3), (4) and (5).
(Repeat 16 times.)



* Ensure the arrows on hardware **A1** point towards mounting positions.

STEP 4

- Fix hardware **J1 (L/R)** into panel (3), (4) and (5) with hardware **E**.
(Repeat 3 times for each hardware.)



First hole from the edge.

Small hole at the center.

Third hole from the edge.

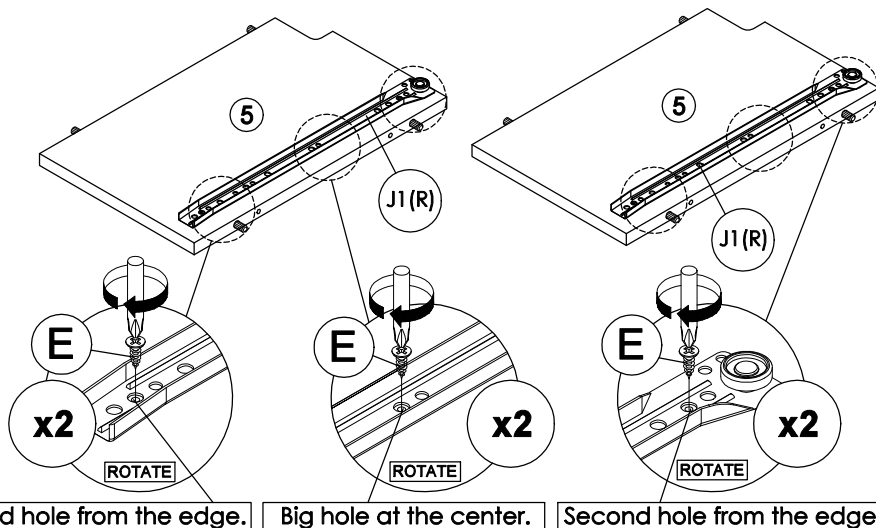
ASSEMBLY INSTRUCTIONS

PAGE: 3/5

MODEL : JESSIE 1.6M TV UNIT

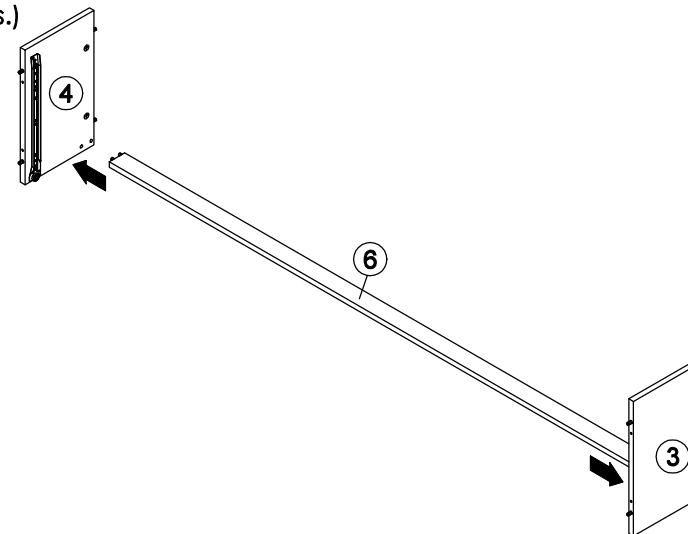
STEP 5

- Fix hardware **J1 (R)** into panel **(5)** with hardware **E**.
(Repeat 3 times for each hardware.)



STEP 6

- Attach panel **(6)** to panel **(3)** and **(4)**.
(Repeat 1 times.)



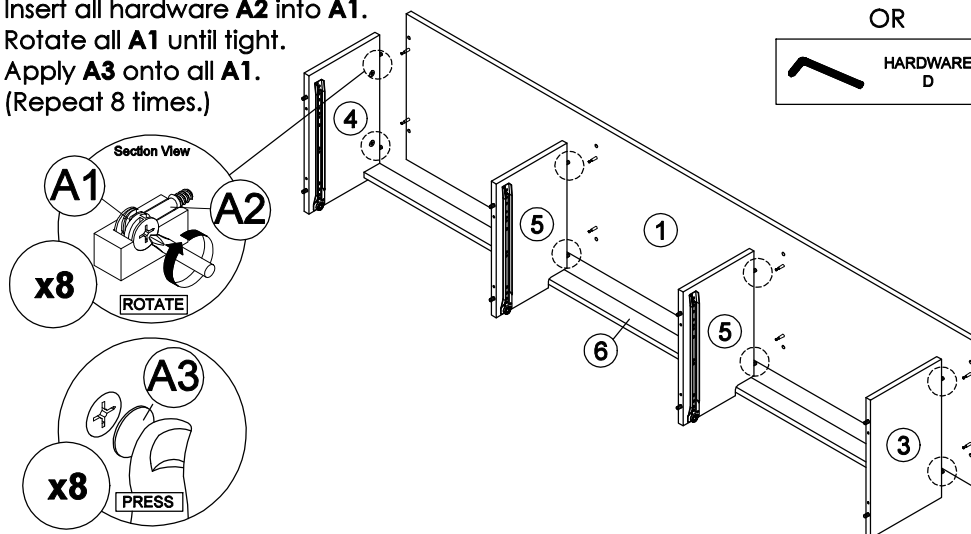
* In this step hardware **B** are pre-inserted.

STEP 7

- Attach panel **(1)** to panel **(3)**, **(4)** and **(5)**.
- Insert all hardware **A2** into **A1**.
- Rotate all **A1** until tight.
- Apply **A3** onto all **A1**.
(Repeat 8 times.)

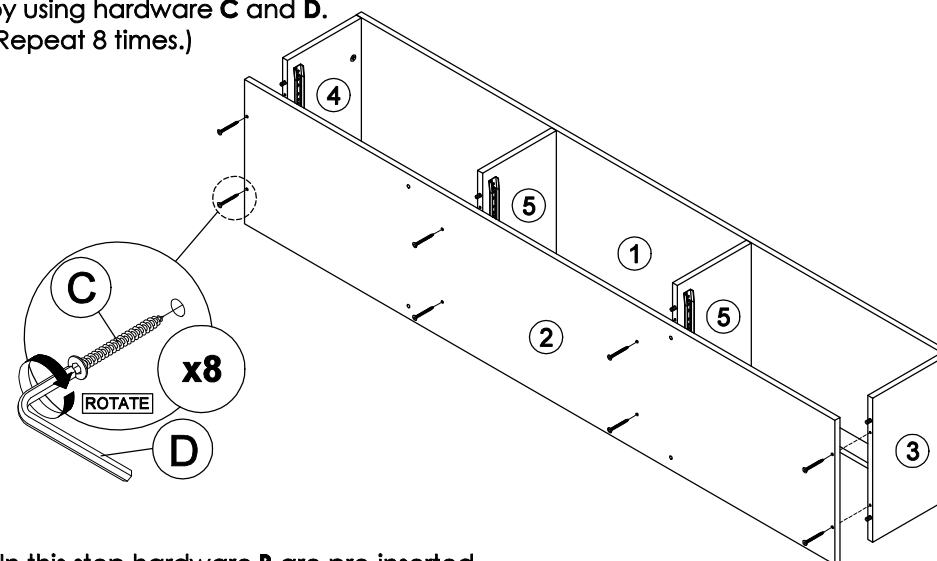
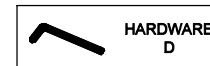


OR



STEP 8

- Connect panel **(2)** to panel **(3)**, **(4)** and **(5)** by using hardware **C** and **D**.
(Repeat 8 times.)



* In this step hardware **B** are pre-inserted.

* In this step hardware **A1**, **A2** and **B** are pre-inserted.

ASSEMBLY INSTRUCTIONS

PAGE: 4/5

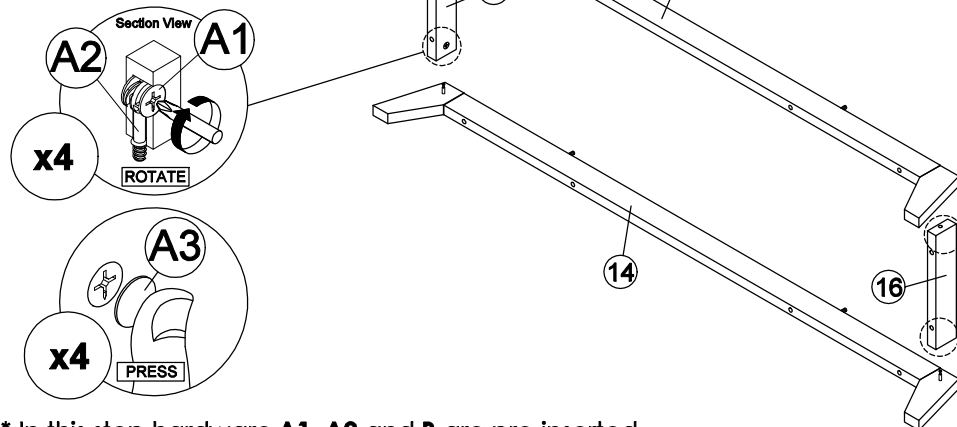
MODEL : JESSIE 1.8M TV UNIT

STEP 9

- Attach panel (16) to panel (14) and (15).
- Insert all hardware A2 into A1.
- Rotate all A1 until tight.
- Apply A3 onto all A1.
- (Repeat 4 times.)



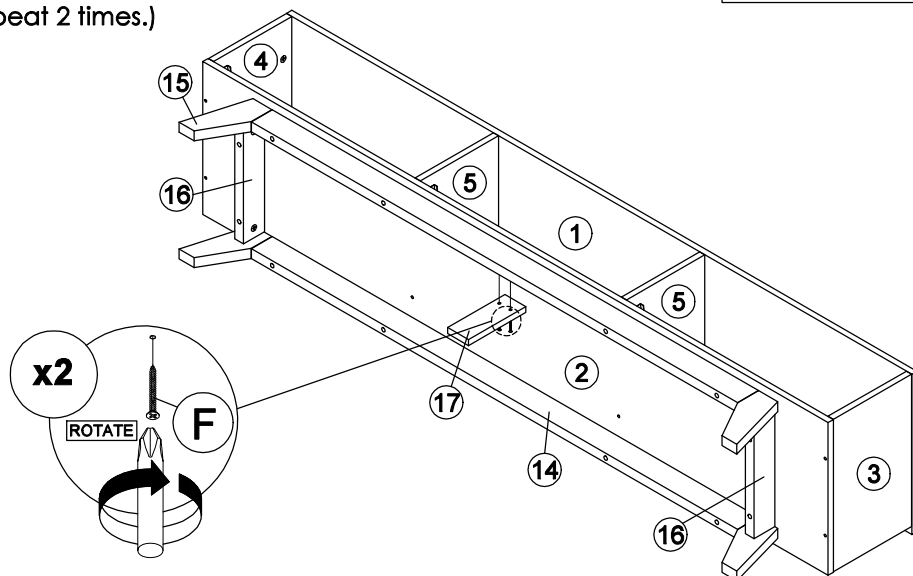
OR



* In this step hardware A1, A2 and B are pre-inserted.

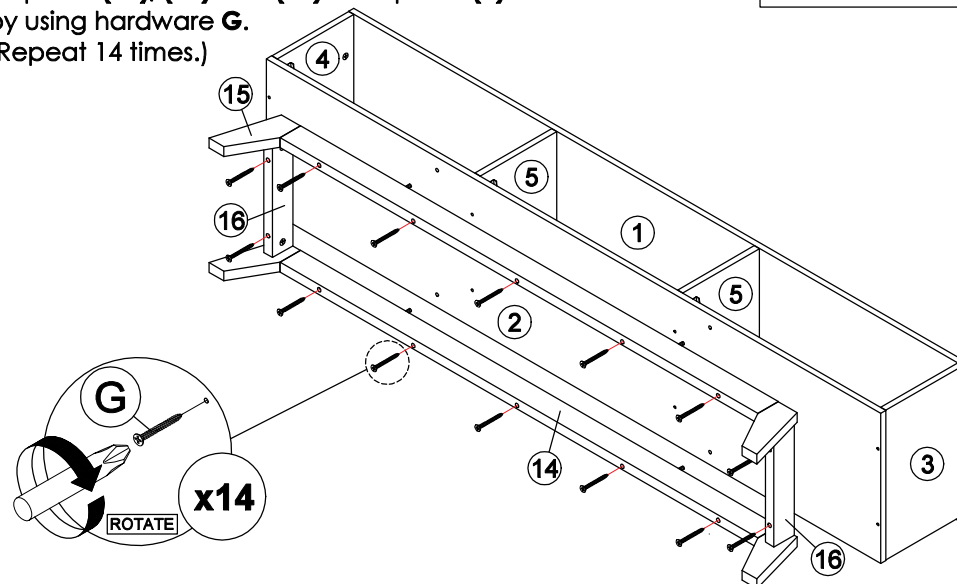
STEP 11

- Fix panel (17) onto panel (15) by using hardware F.
- (Repeat 2 times.)



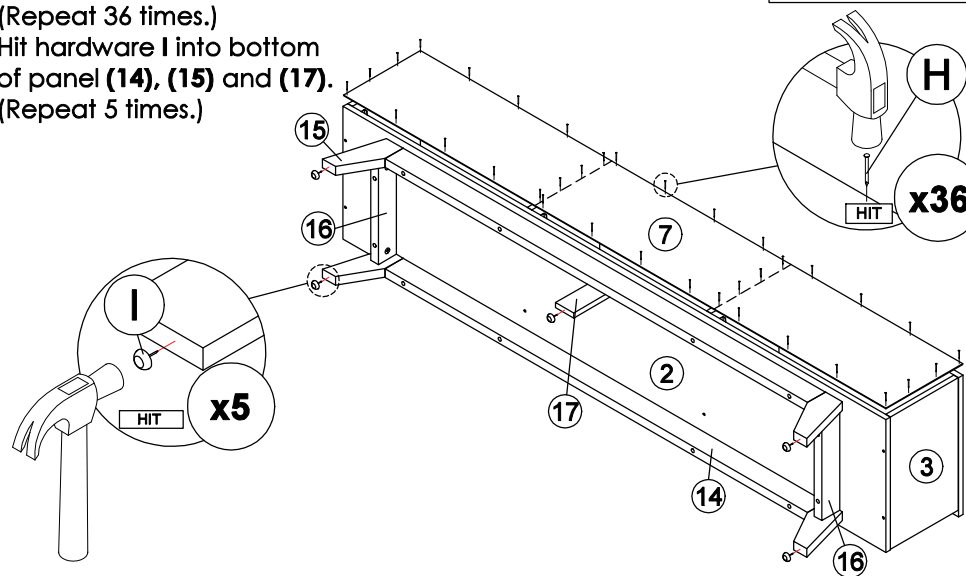
STEP 10

- Fix panel (14), (15) and (16) onto panel (2) by using hardware G.
- (Repeat 14 times.)



STEP 12

- Assemble panel (7) to entire body with hardware H.
- (Repeat 36 times.)
- Hit hardware I into bottom of panel (14), (15) and (17).
- (Repeat 5 times.)



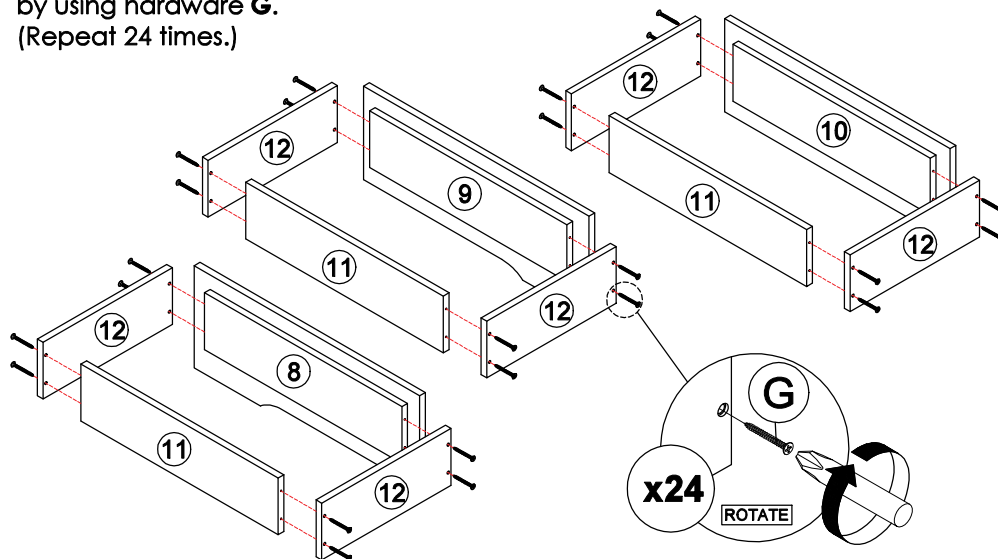
ASSEMBLY INSTRUCTIONS

PAGE: 5/5

MODEL : JESSIE 1.8M TV UNIT

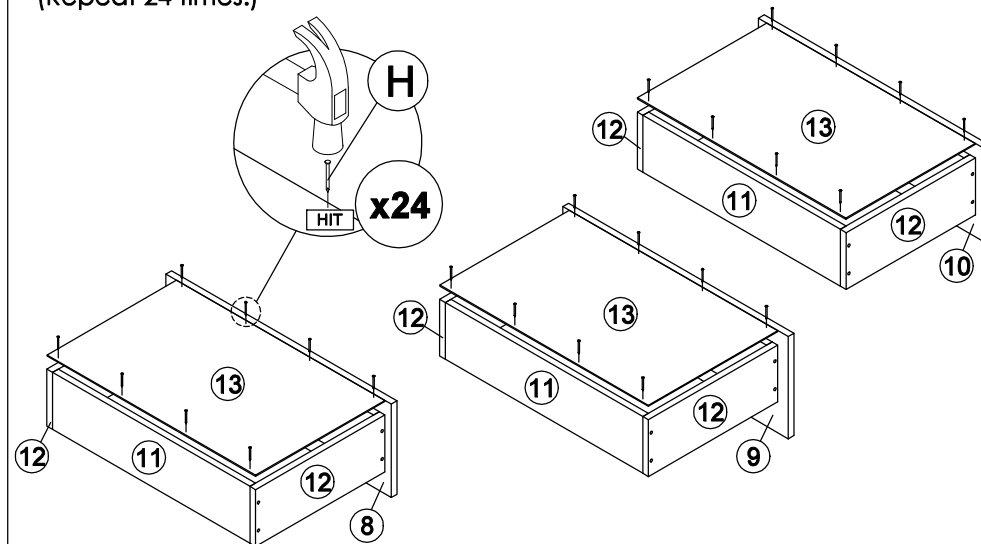
STEP 13

- Assemble panel (12) with panel (8) or (9) or (10) and (11) by using hardware G. (Repeat 24 times.)



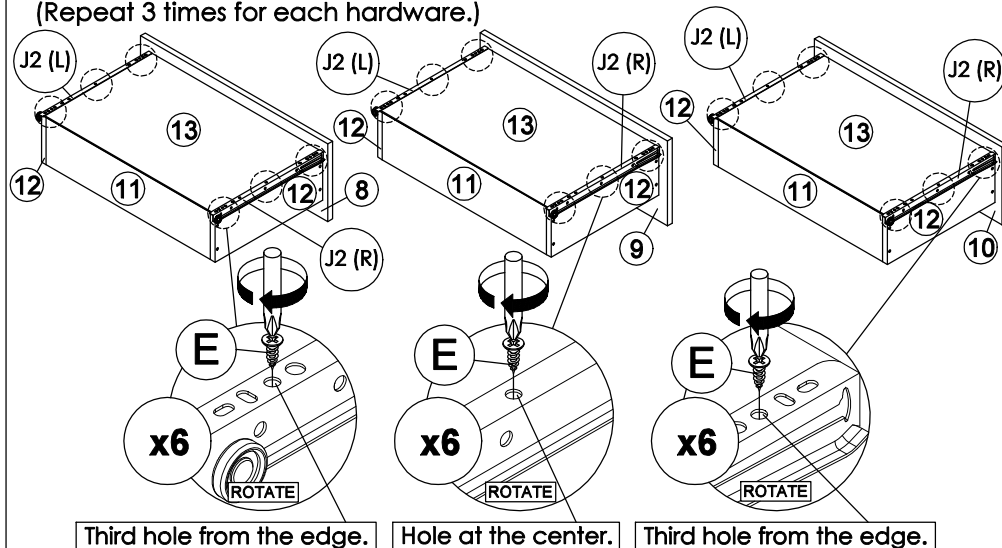
STEP 14

- Assemble panel (13) to entire body with hardware H. (Repeat 24 times.)



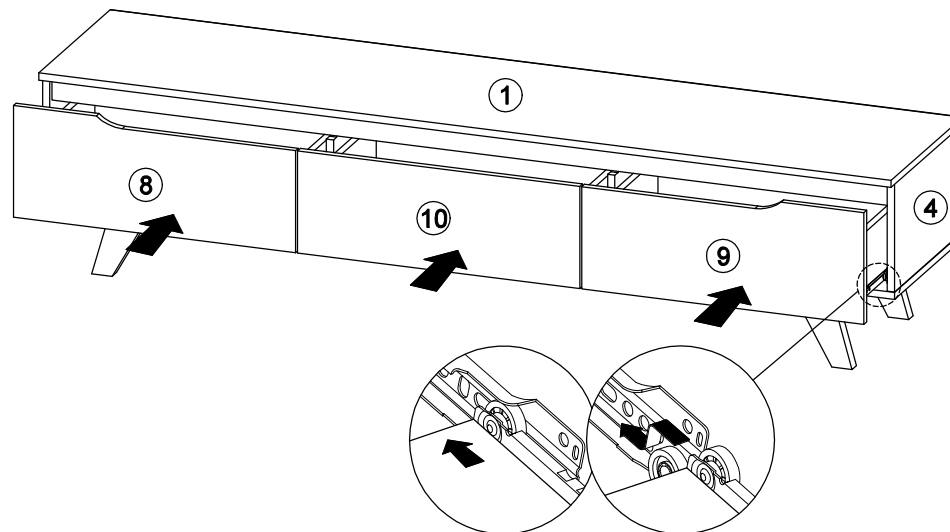
STEP 15

- Assemble hardware J2 (L/R) to panel (13) by using hardware E. (Repeat 3 times for each hardware.)



STEP 16

- Put all the drawer in place along the drawer slides.



*Hardware J2 (L/R) shall be leaning against panel (8) or (9) or (10) when assembling.