

# ASSEMBLY INSTRUCTIONS



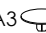


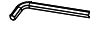









PAGE: 1/8

MODEL : ECHO BUFFET

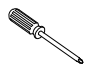
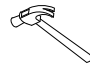
Before you begin, please follow assembly instructions carefully, then follow them step by step.

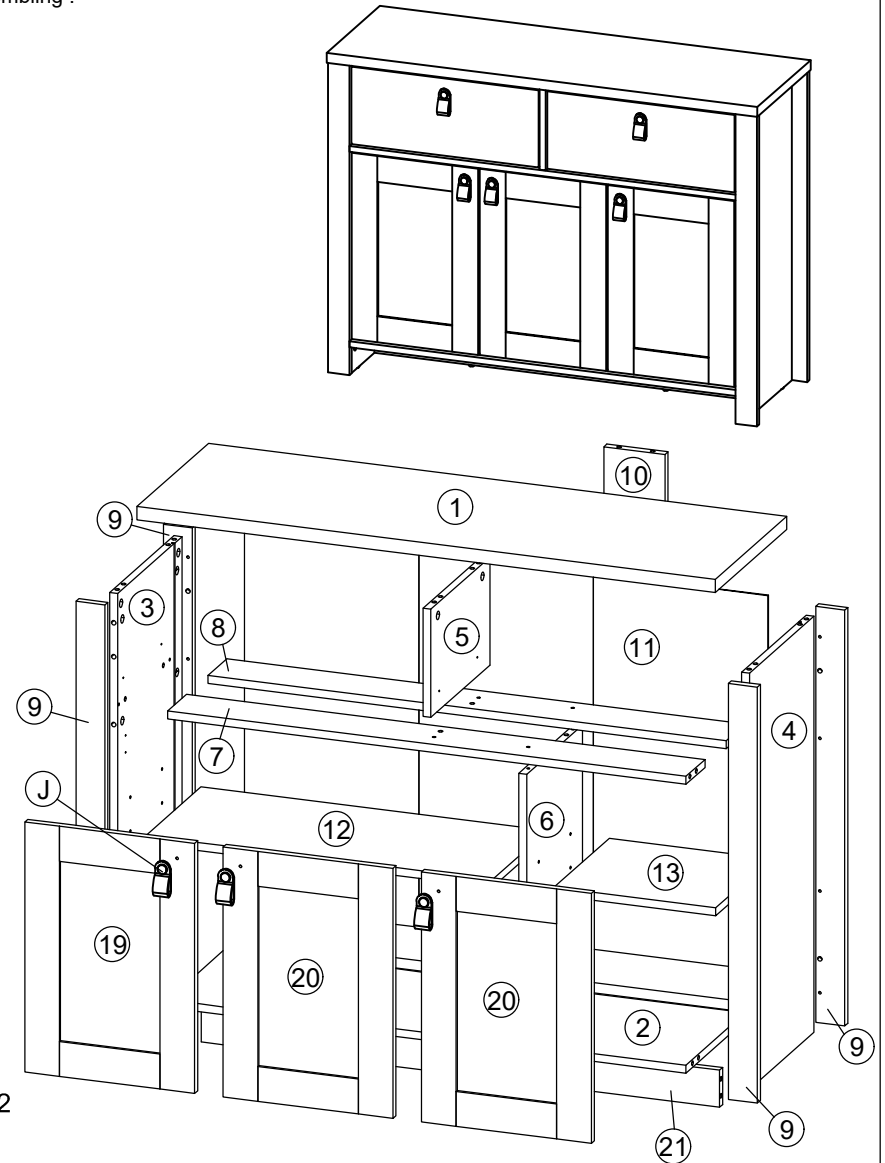
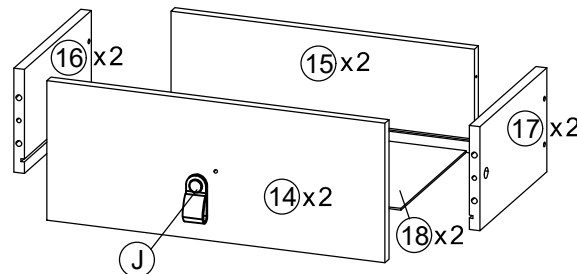
Read instruction carefully . See Furniture Parts list and Hardware List for guidance . Be sure you have all parts before you start assembling . Place and assemble furniture on a clean flat soft surface , such as carpet or rug to prevent being scratched .

PART LIST		QTY
1	TOP PANEL	1 PC
2	BOTTOM PANEL	1 PC
3	SIDE PANEL (L)	1 PC
4	SIDE PANEL (R)	1 PC
5	CENTER PANEL (L)	1 PC
6	CENTER PANEL (R)	1 PC
7	MIDDLE PANEL (FRONT)	1 PC
8	MIDDLE PANEL (BACK)	1 PC
9	BONE PANEL	4 PCS
10	BACK BONE	1 PC
11	BACK PANEL	1 PC
12	SHELF PANEL (L)	1 PC
13	SHELF PANEL (R)	1 PC
14	DRAWER FRONT	2 PCS
15	DRAWER BACK	2 PCS
16	DRAWER SIDE (L)	2 PCS
17	DRAWER SIDE (R)	2 PCS
18	DRAWER BOTTOM	2 PCS
19	DOOR PANEL (L)	1 PC
20	DOOR PANEL (R)	2 PCS
21	LEG PANEL	1 PC

HARDWARE		
A	MINI FIX A1  A2  A3 	36 SETS
B	M8 X 30MM WOOD DOWEL 	40 PCS
C	M6 X 50MM CSK CAP WOOD SCREW 	8 PCS
D	ALLEN KEY M4 	1 PC
E	M3.5 X 16MM C.B SCREW 	60 PCS
F	HANDLE SCREW M4 x 16MM 	5 PCS
G	M4 X 38MM C.B SCREW 	8 PCS
H	5/8 PVC NAIL LEG 	6 PCS
I	METAL SHELF SUPPORT 	8 PCS
J	HANDLE C6658 (BROWN) 	5 PCS
K	SOFT CLOSING 7/8 HINGES 	6 PCS
L	10" DRAWER SLIDE L1 (L/R)  L2 (L/R) 	2 SETS

**SELF-PREPARED TOOLS:** Tools below are NOT included in package.

 SCREWDRIVER	 HAMMER
--	---



**Reminder:**

Please ensure that all surfaces and edges with colours/laminations are facing forward/outward.

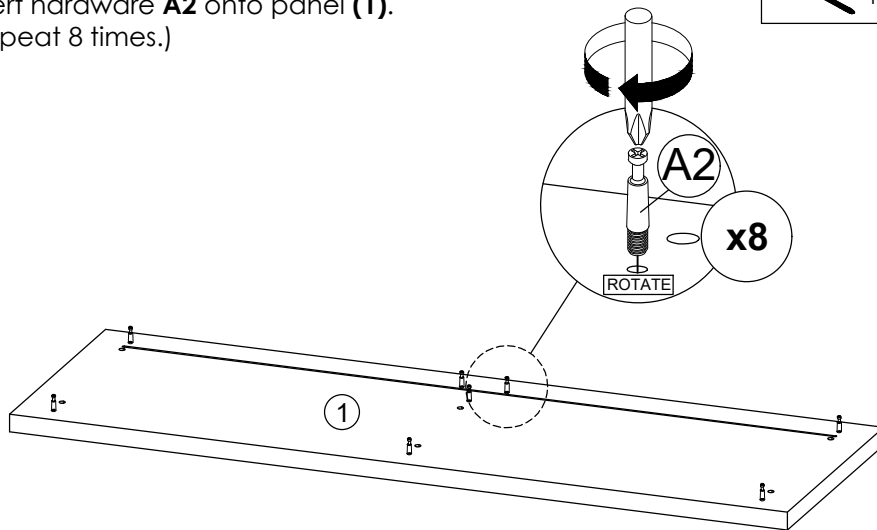
# ASSEMBLY INSTRUCTIONS

PAGE: 2/8

# MODEL : ECHO BUFFET

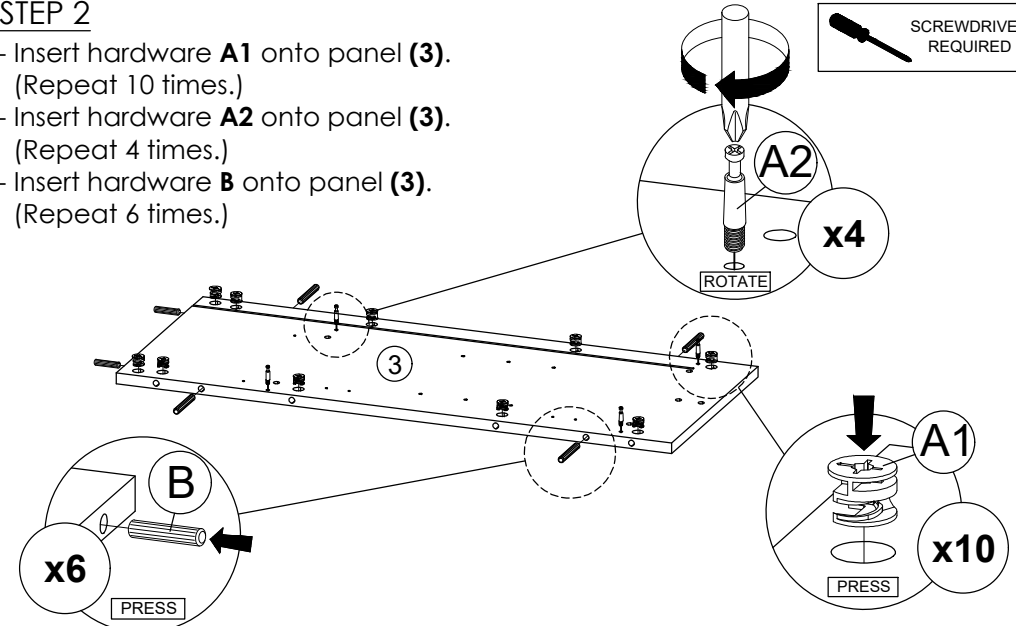
## STEP 1

- Insert hardware **A2** onto panel **(1)**.  
(Repeat 8 times.)



## STEP 2

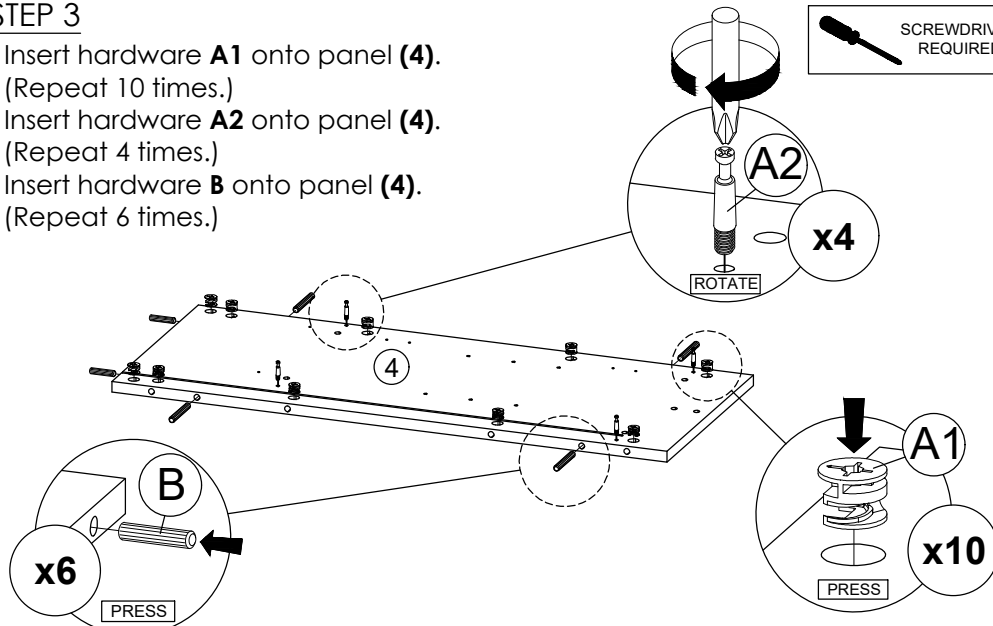
- Insert hardware **A1** onto panel **(3)**.  
(Repeat 10 times.)
- Insert hardware **A2** onto panel **(3)**.  
(Repeat 4 times.)
- Insert hardware **B** onto panel **(3)**.  
(Repeat 6 times.)



\* Ensure the arrows on hardware **A1** point towards mounting positions.

## STEP 3

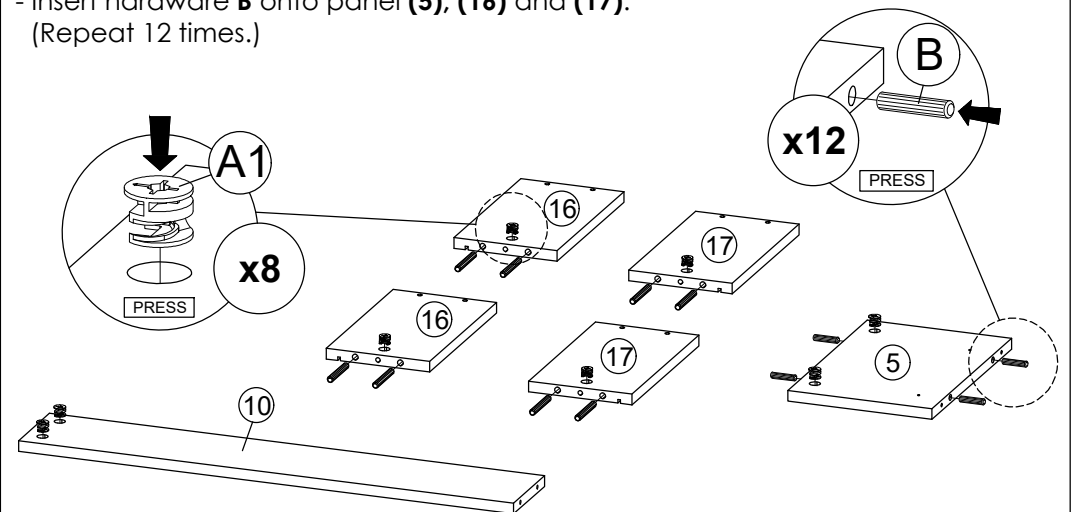
- Insert hardware **A1** onto panel **(4)**.  
(Repeat 10 times.)
- Insert hardware **A2** onto panel **(4)**.  
(Repeat 4 times.)
- Insert hardware **B** onto panel **(4)**.  
(Repeat 6 times.)



\* Ensure the arrows on hardware **A1** point towards mounting positions.

## STEP 4

- Insert hardware **A1** onto panel **(5)**, **(10)**, **(16)** and **(17)**.  
(Repeat 8 times.)
- Insert hardware **B** onto panel **(5)**, **(16)** and **(17)**.  
(Repeat 12 times.)



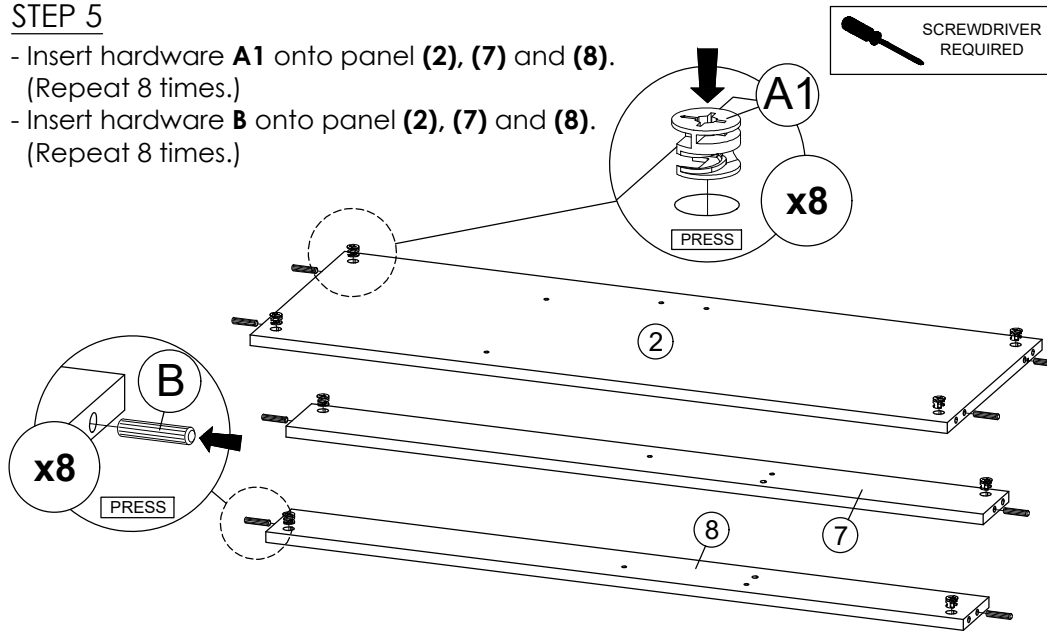
\* Ensure the arrows on hardware **A1** point towards mounting positions.

# ASSEMBLY INSTRUCTIONS

# MODEL : ECHO BUFFET

## STEP 5

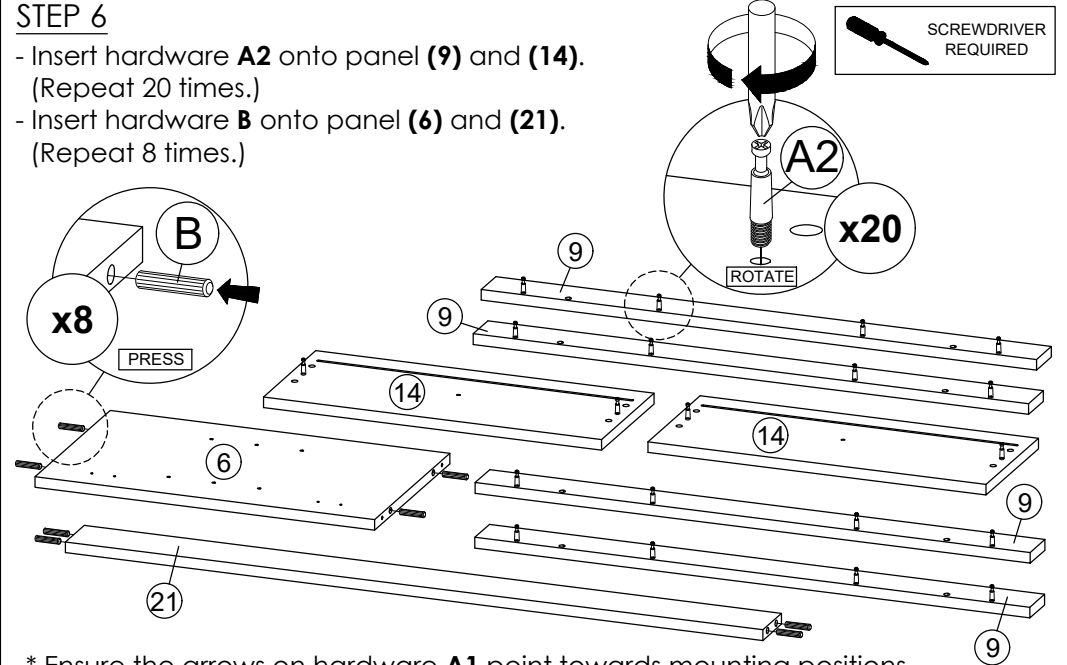
- Insert hardware **A1** onto panel **(2)**, **(7)** and **(8)**.  
(Repeat 8 times.)
- Insert hardware **B** onto panel **(2)**, **(7)** and **(8)**.  
(Repeat 8 times.)



\* Ensure the arrows on hardware **A1** point towards mounting positions.

## STEP 6

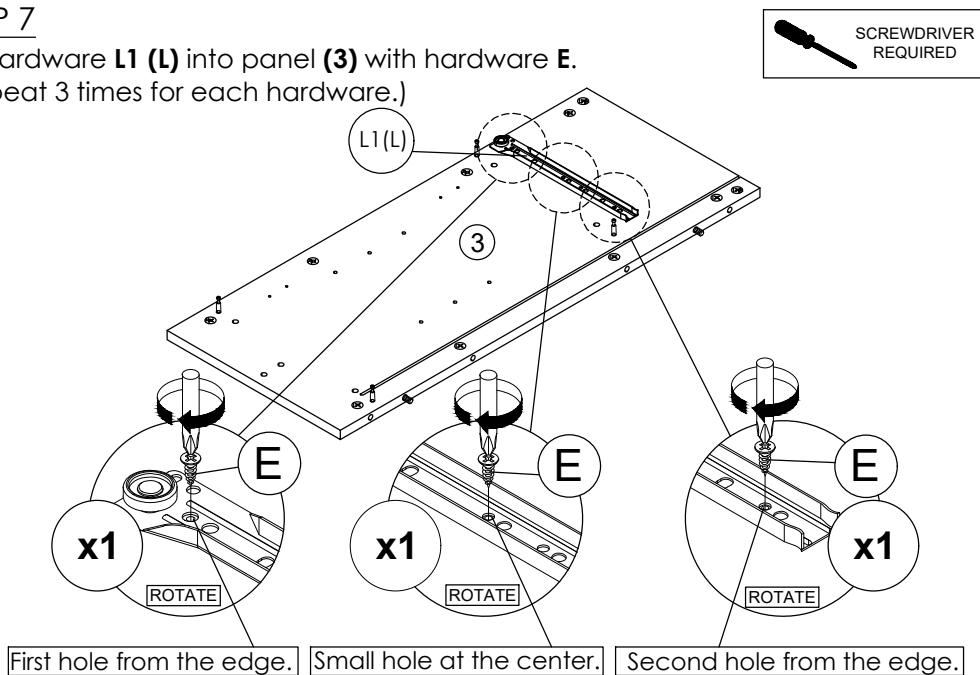
- Insert hardware **A2** onto panel **(9)** and **(14)**.  
(Repeat 20 times.)
- Insert hardware **B** onto panel **(6)** and **(21)**.  
(Repeat 8 times.)



\* Ensure the arrows on hardware **A1** point towards mounting positions.

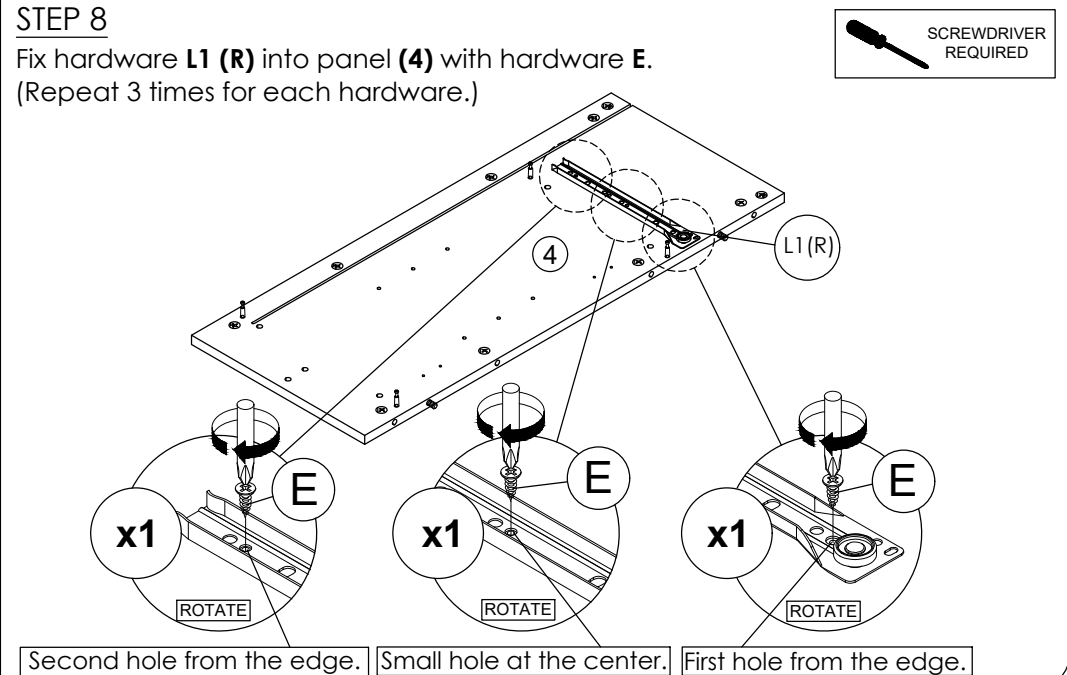
## STEP 7

- Fix hardware **L1 (L)** into panel **(3)** with hardware **E**.  
(Repeat 3 times for each hardware.)



## STEP 8

- Fix hardware **L1 (R)** into panel **(4)** with hardware **E**.  
(Repeat 3 times for each hardware.)



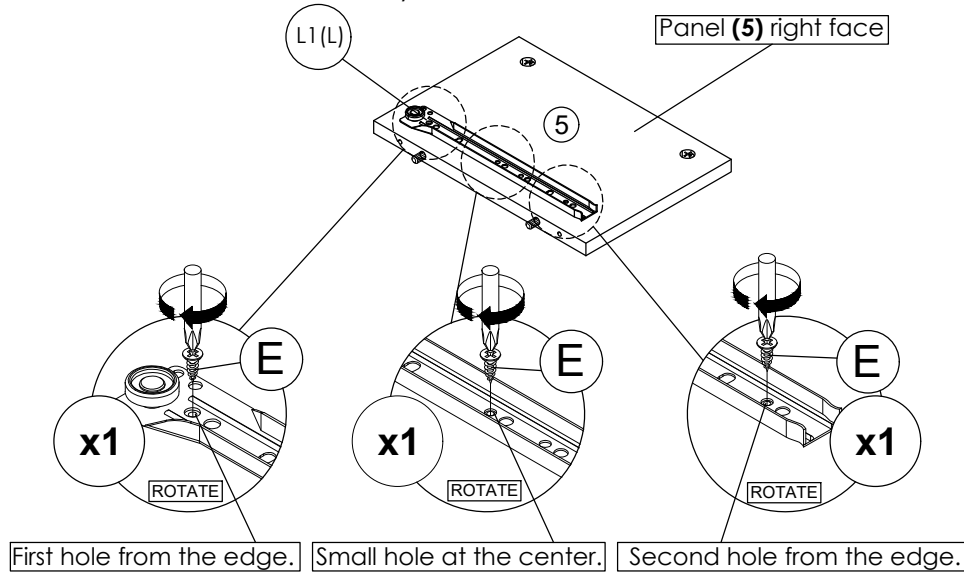
# ASSEMBLY INSTRUCTIONS

PAGE: 4/8

# MODEL : ECHO BUFFET

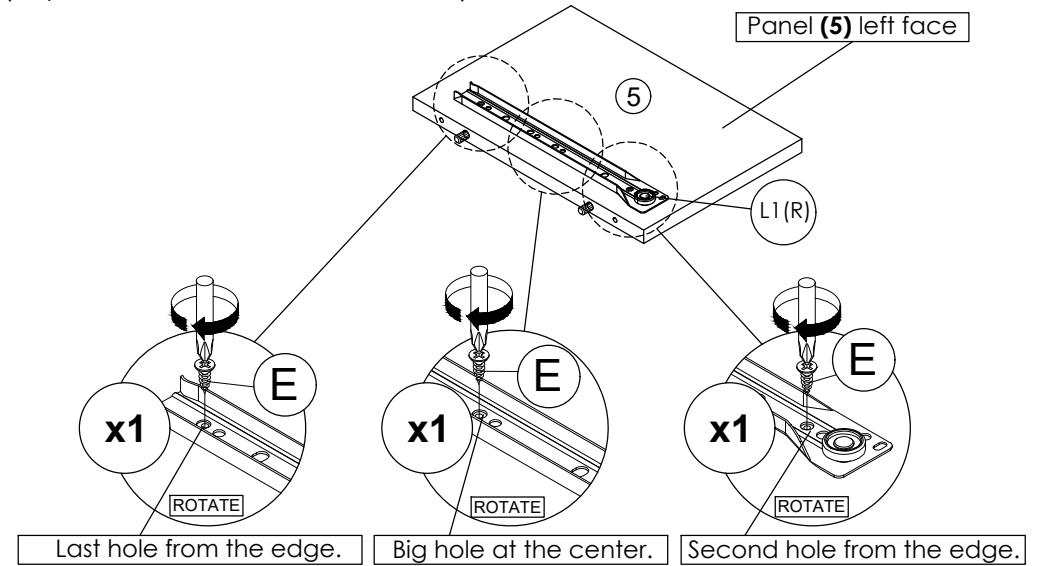
## STEP 9

Fix hardware **L1 (L)** into panel **(5)** with hardware **E**.  
(Repeat 3 times for each hardware.)



## STEP 10

Fix hardware **L1 (R)** into panel **(5)** with hardware **E**.  
(Repeat 3 times for each hardware.)

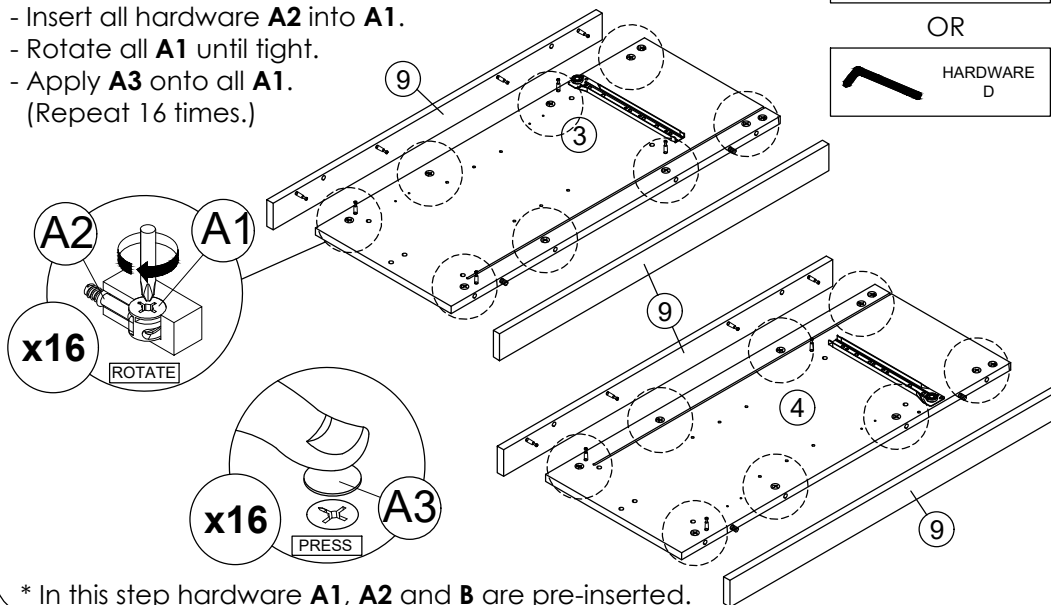
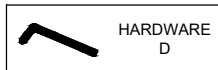


## STEP 11

- Attach panel **(3)** to panel **(9)** and **(4)** to panel **(9)**.
- Insert all hardware **A2** into **A1**.
- Rotate all **A1** until tight.
- Apply **A3** onto all **A1**.
- (Repeat 16 times.)



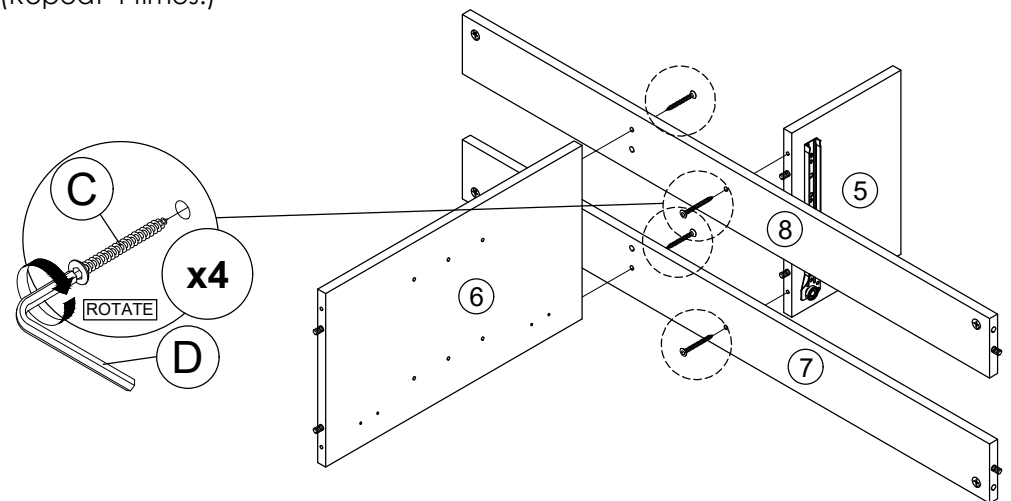
OR



\* In this step hardware **A1**, **A2** and **B** are pre-inserted.

## STEP 12

- Connect panel **(5)** and **(6)** to panel **(7)** and **(8)** by using hardware **C** and **D**.
- (Repeat 4 times.)



\* In this step hardware **B** are pre-inserted.

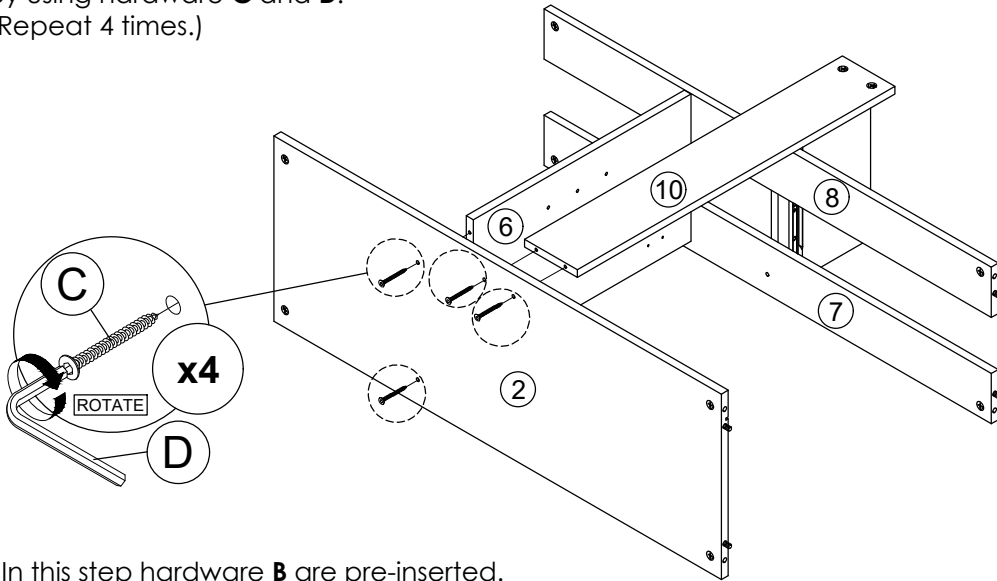
# ASSEMBLY INSTRUCTIONS

PAGE: 5/8

# MODEL : ECHO BUFFET

## STEP 13

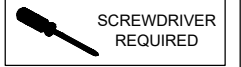
- Connect panel (2) to panel (6) and (10) by using hardware C and D. (Repeat 4 times.)



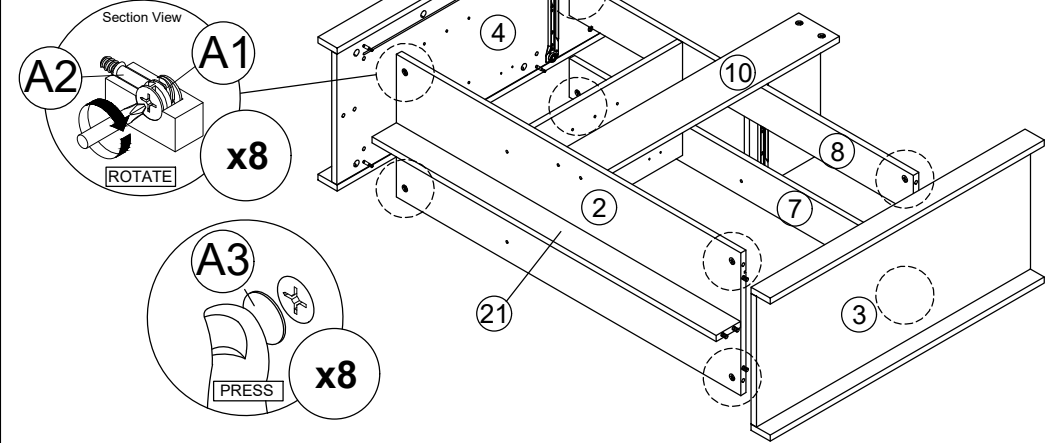
\* In this step hardware B are pre-inserted.

## STEP 14

- Attach panel (2), (7), (8) and (21) to panel (3) and (4).
- Insert all hardware A2 into A1.
- Rotate all A1 until tight.
- Apply A3 onto all A1. (Repeat 8 times.)



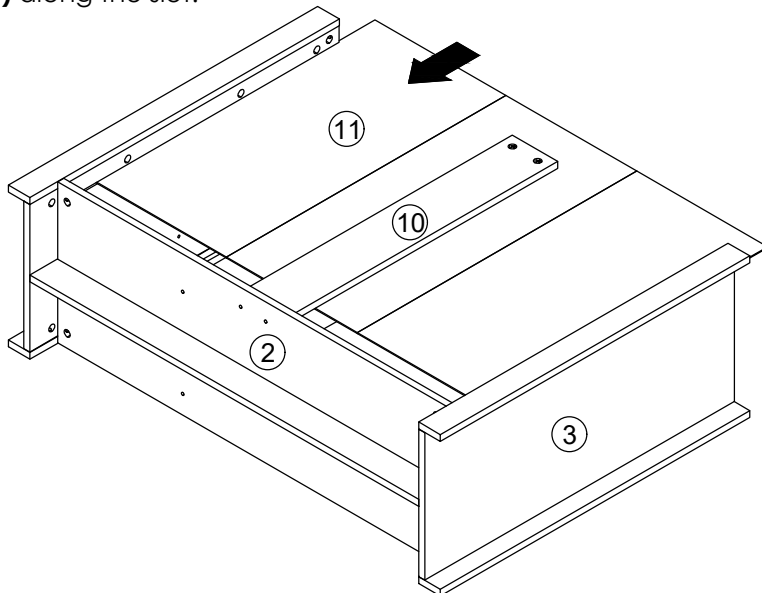
OR



\* In this step hardware A1, A2 and B are pre-inserted.

## STEP 15

- Insert the panel (11) along the slot. (Repeat 1 times.)

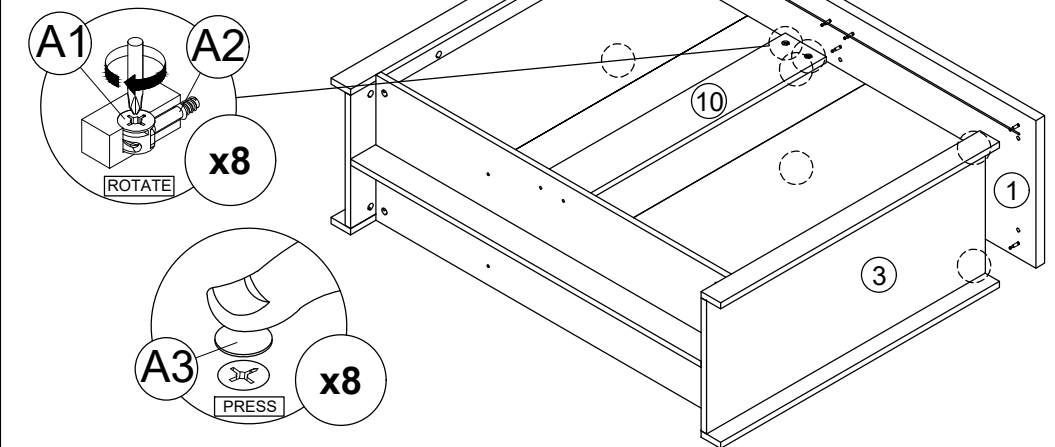


## STEP 16

- Attach panel (1) to panel (3), (4), (5) and (10).
- Insert all hardware A2 into A1.
- Rotate all A1 until tight.
- Apply A3 onto all A1. (Repeat 8 times.)



OR



\* In this step hardware A1, A2 and B are pre-inserted.

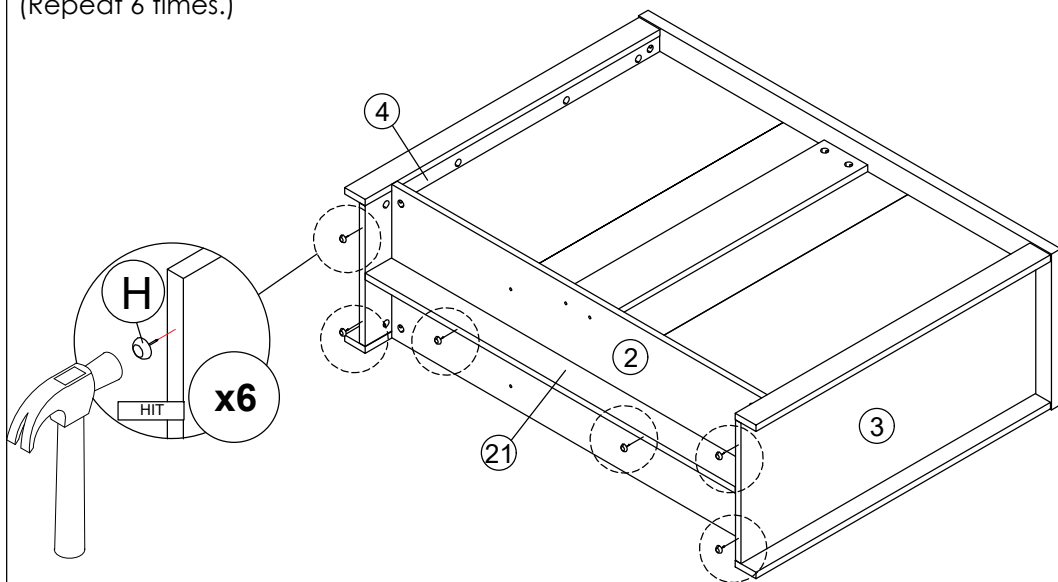
# ASSEMBLY INSTRUCTIONS

PAGE: 6/8

# MODEL : ECHO BUFFET

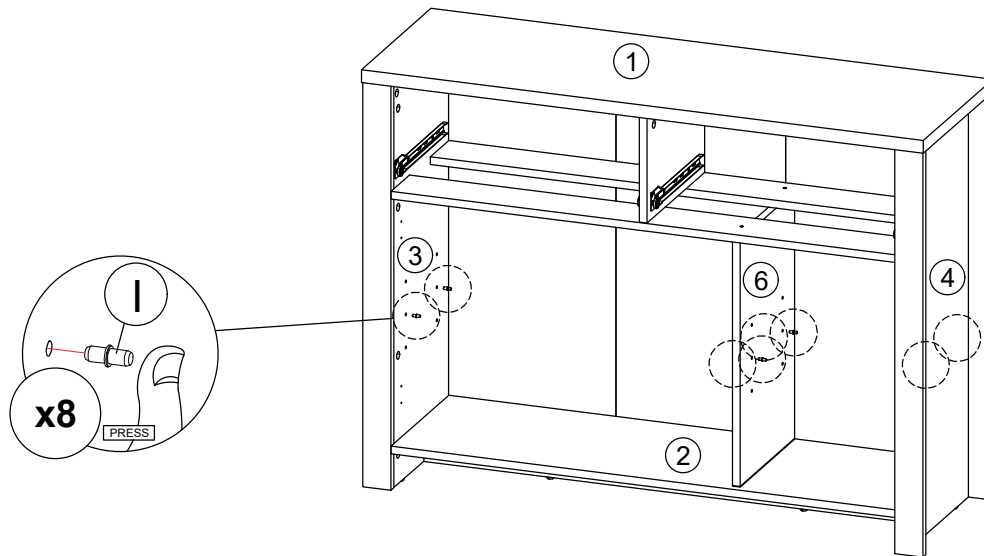
## STEP 17

Hit hardware **H** into bottom of panel **(3)**, **(4)** and **(21)**.  
(Repeat 6 times.)



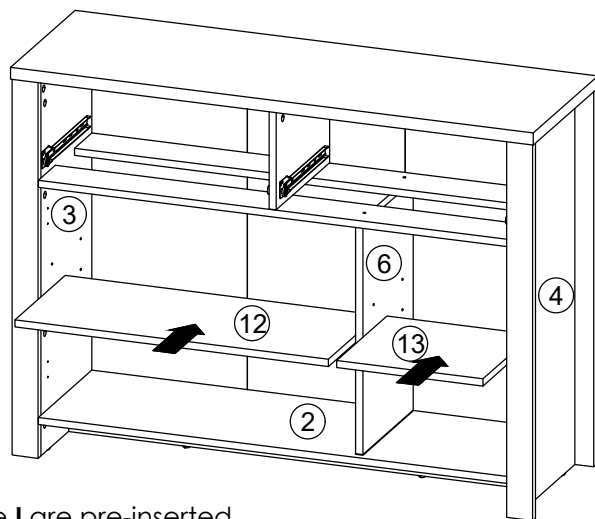
## STEP 18

Insert hardware **I** into mounting positions on panel **(3)**, **(4)** and **(6)** by hand.  
(Repeat 8 times.)



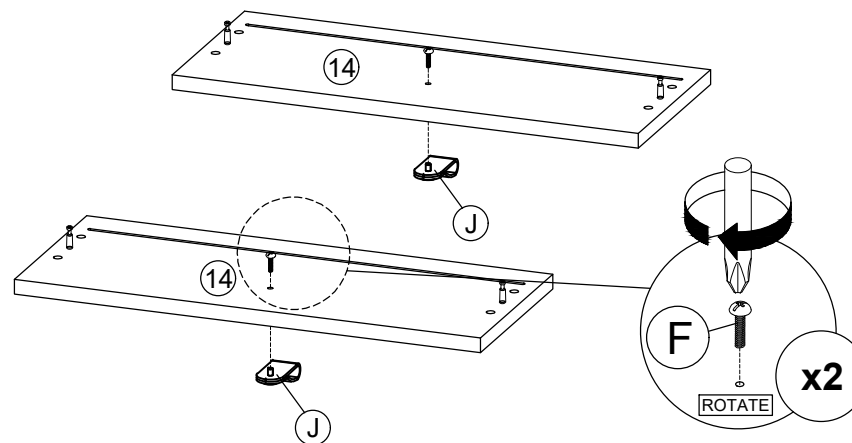
## STEP 19

- Assemble the panel **(12)** into between panel **(3)** and **(6)**.  
(Repeat 1 times.)
- Assemble the panel **(13)** into between both of the panel **(4)** and **(6)**.  
(Repeat 1 times.)



## STEP 20

Fix hardware **J** onto panel **(14)** by using hardware **F**.  
(Repeat 1 times for each hardware.)



\* In this step hardware **I** are pre-inserted.

# ASSEMBLY INSTRUCTIONS

PAGE: 7/8

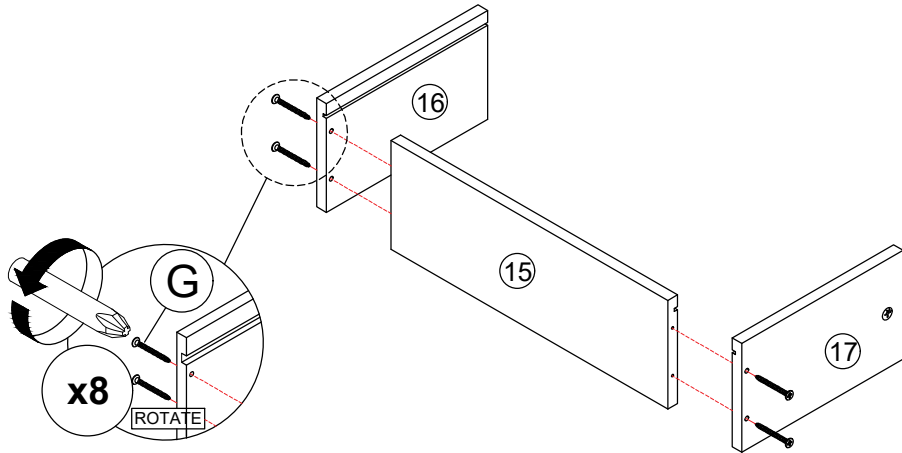
# MODEL : ECHO BUFFET

## STEP 21

Assemble panel (15) with panel (16) and (17) by using hardware G.

(Repeat 8 times.)

\* In this step only show one of the drawers.

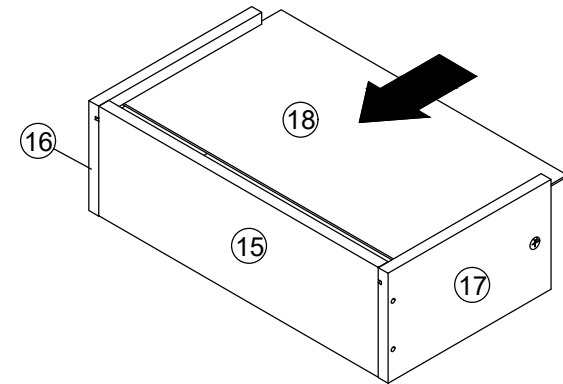


## STEP 22

Insert the panel (18) along the slot.

(Repeat 2 times.)

\* In this step only show one of the drawers.



## STEP 23

- Attach panel (14) to panel (16) and (17).

- Insert all hardware A2 into A1.

- Rotate all A1 until tight.

- Apply A3 onto all A1.

(Repeat 4 times.)

\* In this step only show one of the drawers.

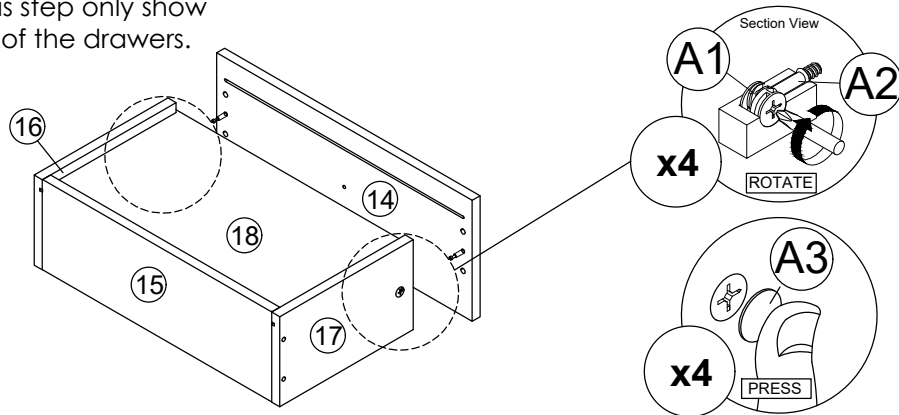


SCREWDRIVER  
REQUIRED

OR



HARDWARE  
D



## STEP 24

Assemble hardware L2 (L) to panel (16) and assemble hardware L2 (R) to panel (17)

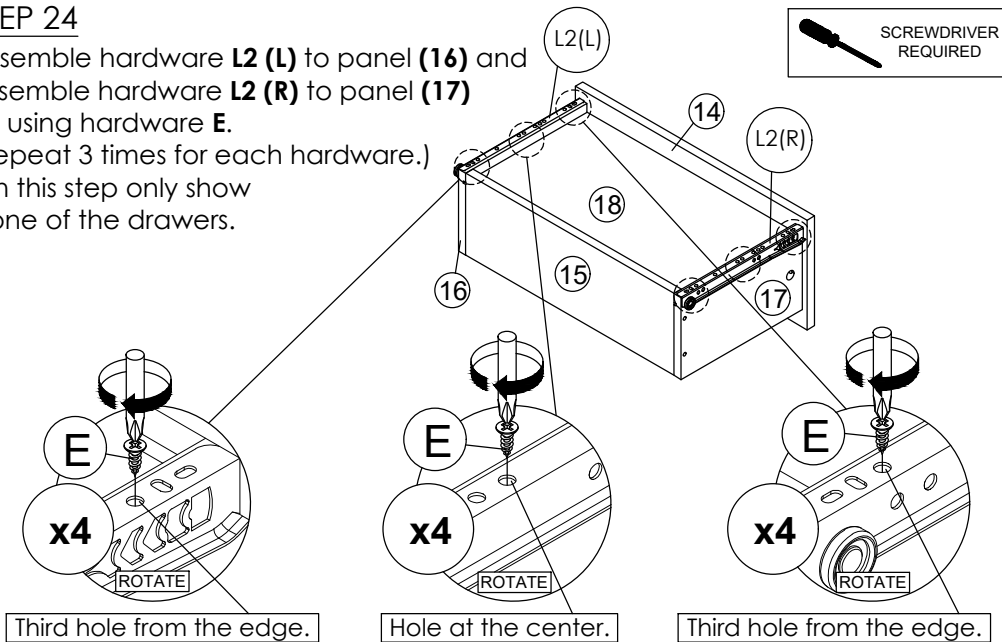
by using hardware E.

(Repeat 3 times for each hardware.)

\* In this step only show one of the drawers.



SCREWDRIVER  
REQUIRED



\*Hardware L2 (L/R) shall be leaning against panel (14) when assembling.

\* In this step hardware A1, A2 and B are pre-inserted.

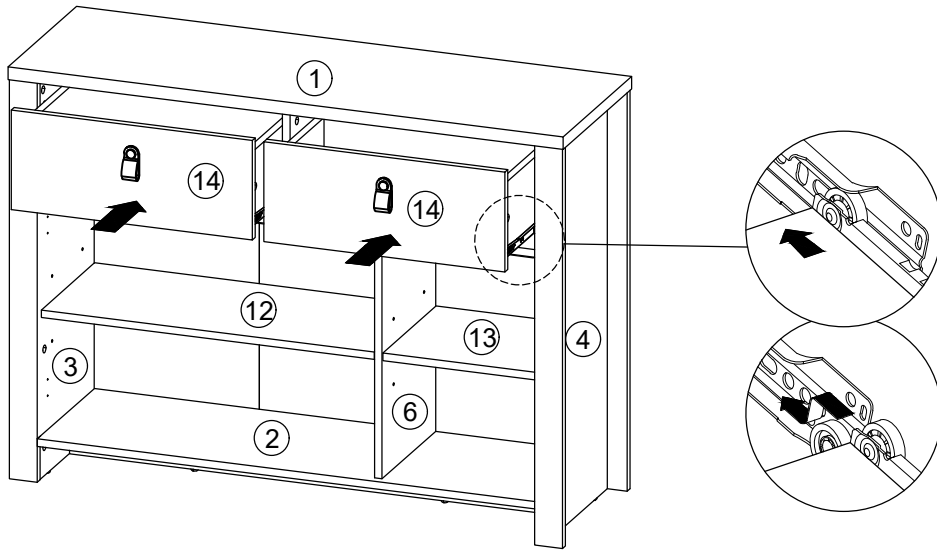
# ASSEMBLY INSTRUCTIONS

PAGE: 8/8

# MODEL : ECHO BUFFET

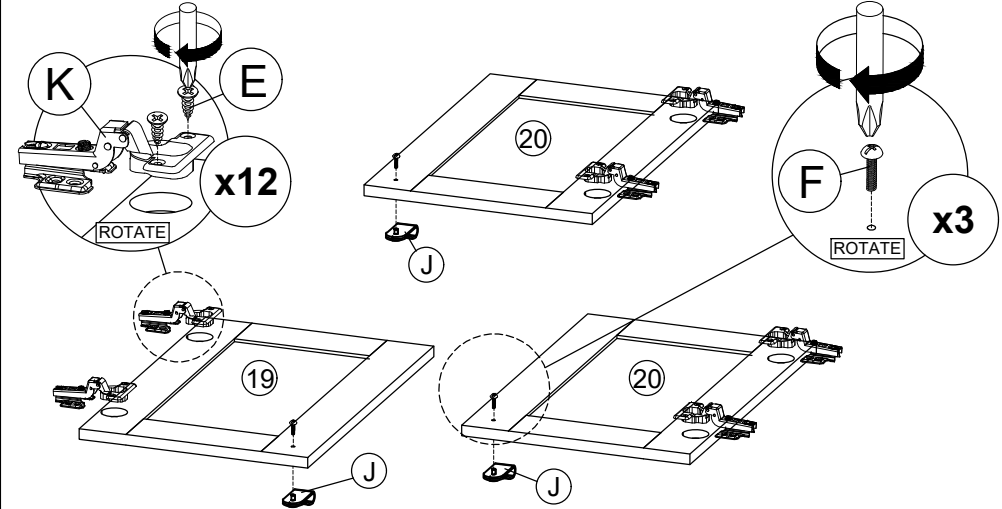
## STEP 25

Put all the drawer in place along the drawer slides.



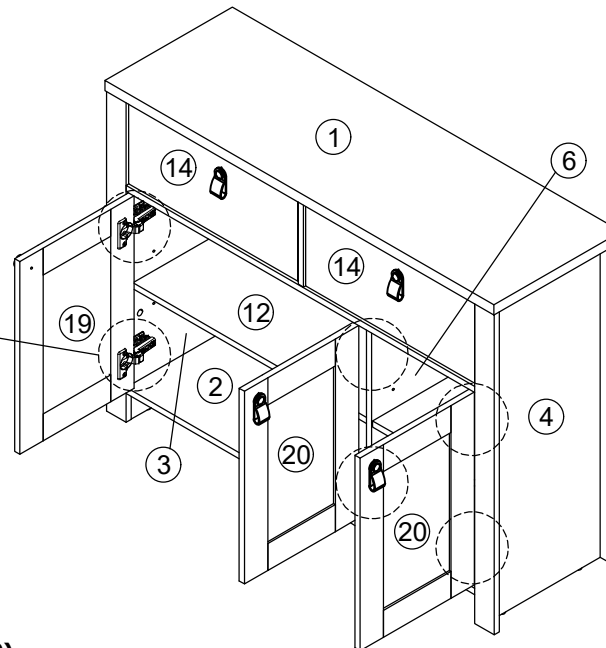
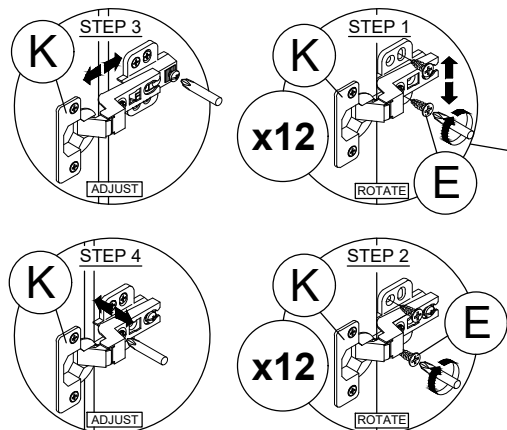
## STEP 26

- Fix hardware **K** onto panel **(19)** and **(20)** by using hardware **E**.  
(Repeat 2 times for each hardware.)
- Fix hardware **J** onto panel **(19)** and **(20)** by using hardware **F**.  
(Repeat 1 times for each hardware.)



## STEP 27

- Fix hardware **K** into panel **(3)**, **(4)** and **(6)** by using hardware **E**.  
(Repeat 4 times for each hardware.)
- Tighten or loosen the screw to adjust position of panel **(19)** and **(20)**.  
(Do only when needed.)



\* In this step hardware **K** have been assembled in panel **(19)** and **(20)**.