

# ASSEMBLY INSTRUCTIONS

PAGE: 1/5

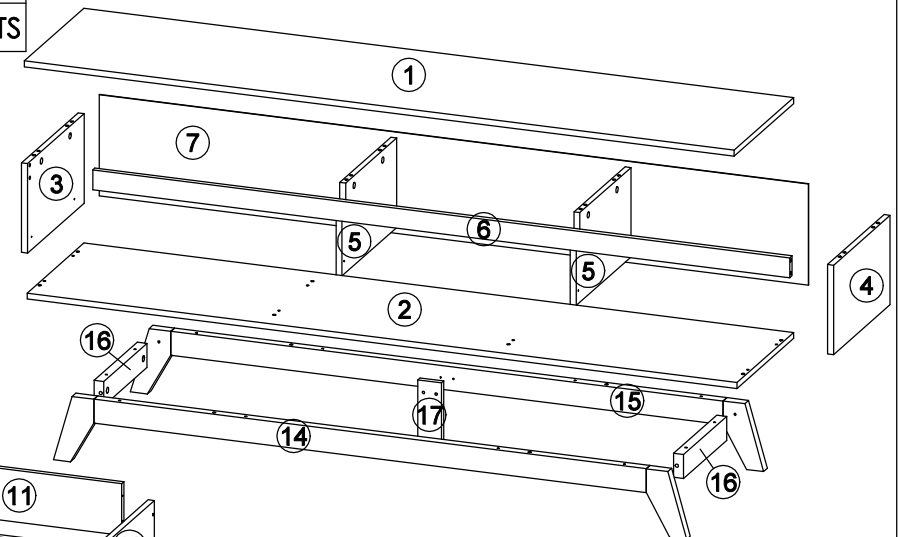
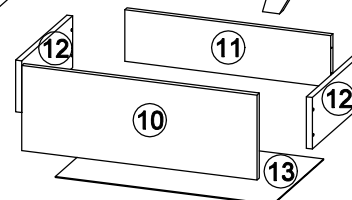
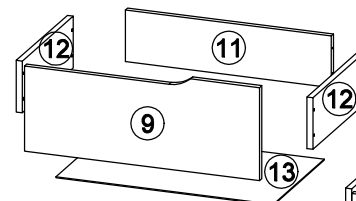
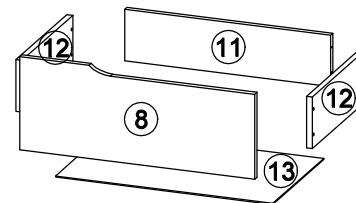
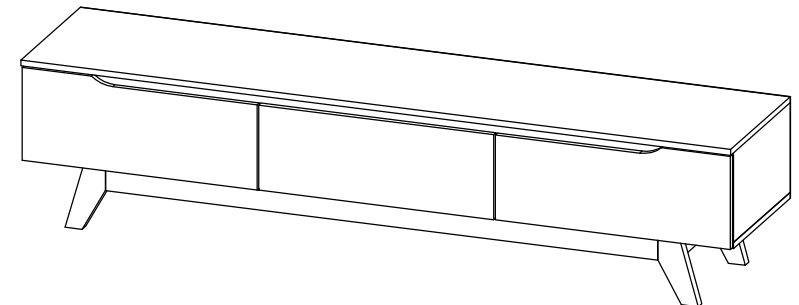
MODEL : JESSIE 1.8M TV UNIT

Before you begin, please follow assembly instructions carefully, then follow them step by step.

Read instruction carefully . See Furniture Parts list and Hardware List for guidance . Be sure you have all parts before you start assembling .  
Place and assemble furniture on a clean flat soft surface , such as carpet or rug to prevent being scratched .

PART LIST		QTY
1	TOP PANEL	1 PC
2	BOTTOM PANEL	1 PC
3	SIDE PANEL (L)	1 PC
4	SIDE PANEL (R)	1 PC
5	CENTER PANEL	2 PCS
6	BONE PANEL	1 PC
7	BACK PANEL	1 PC
8	DRAWER FRONT (1)	1 PC
9	DRAWER FRONT (2)	1 PC
10	DRAWER FRONT (3)	1 PC
11	DRAWER BACK	3 PCS
12	DRAWER SIDE	6 PCS
13	DRAWER BOTTOM	3 PCS
14	APRON FRONT	1 PC
15	APRON BACK	1 PC
16	APRON SIDE	2 PCS
17	CENTER LEG	1 PC

HARDWARE				
A	MINI FIX	A1  A2  A3		12 SETS
B	M8 X 30MM WOOD DOWEL			24 PCS
C	M6 X 50MM CSK CAP WOOD SCREW			8 PCS
D	ALLEN KEY M4			1 PC
E	M3.5 X 16MM C.B SCREW			36 PCS
F	M4 X 30MM C.B SCREW			2 PCS
G	M4 X 38MM C.B SCREW			38 PCS
H	5/8 NAIL			60 PCS
I	5/8 PVC NAIL LEG			5 PCS
J	14" DRAWER SLIDE	J1 ( L/R ) J2 ( L/R )		3 SETS



**SELF-PREPARED TOOLS:** Tools below are NOT included in package.



SCREWDRIVER



HAMMER

## Reminder:

Please ensure that all surfaces and edges with colours/laminations are facing forward/outward.

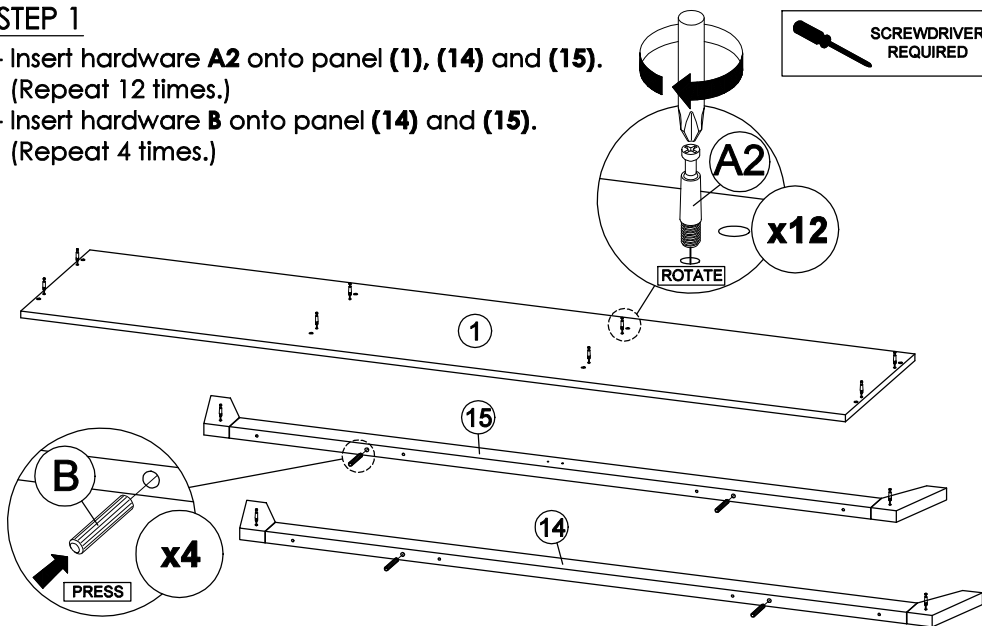
# ASSEMBLY INSTRUCTIONS

PAGE: 2/5

# MODEL : JESSIE 1.8M TV UNIT

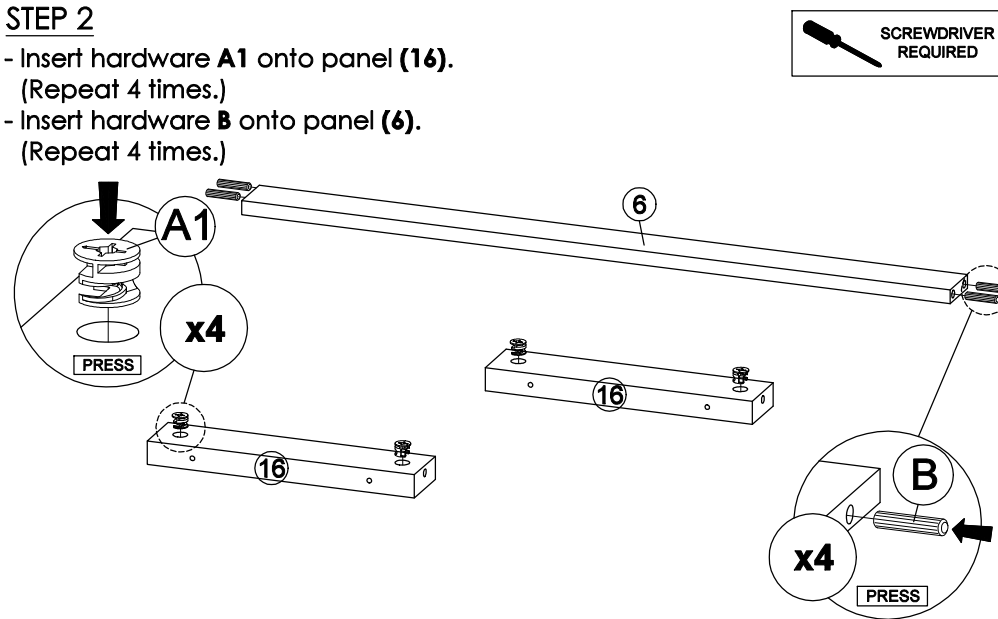
## STEP 1

- Insert hardware **A2** onto panel (1), (14) and (15).  
(Repeat 12 times.)
- Insert hardware **B** onto panel (14) and (15).  
(Repeat 4 times.)



## STEP 2

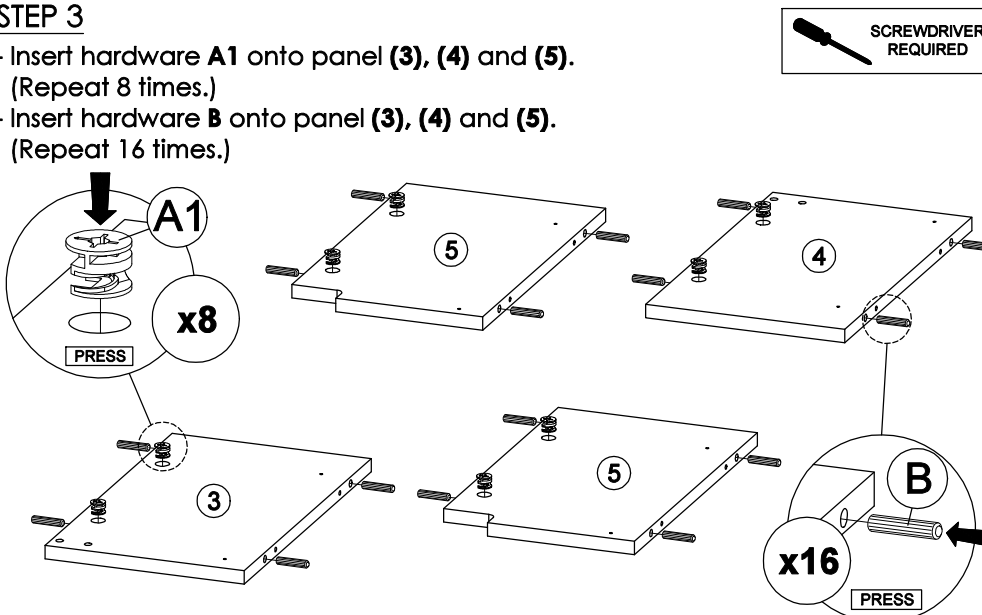
- Insert hardware **A1** onto panel (16).  
(Repeat 4 times.)
- Insert hardware **B** onto panel (6).  
(Repeat 4 times.)



\* Ensure the arrows on hardware **A1** point towards mounting positions.

## STEP 3

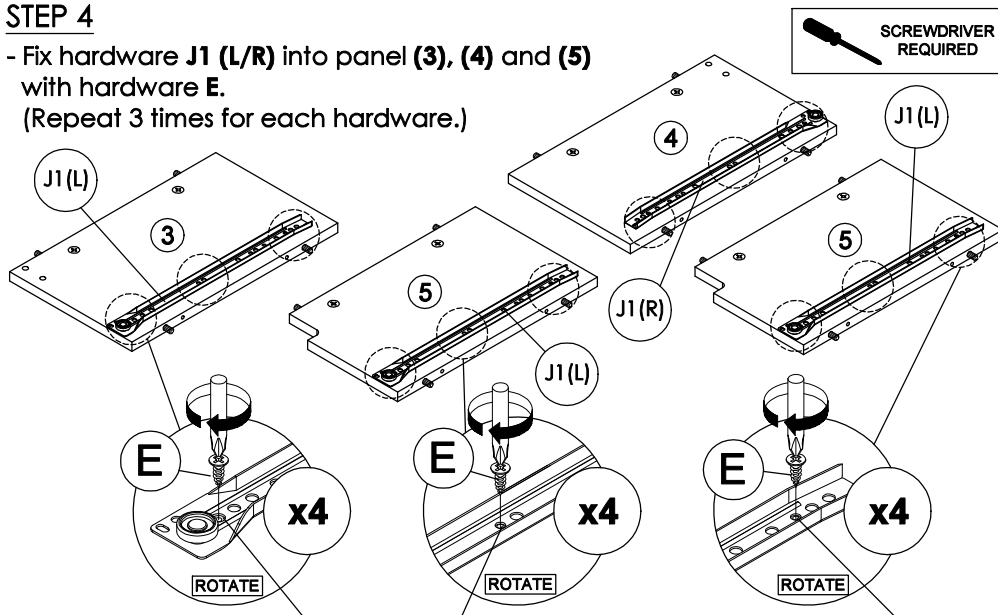
- Insert hardware **A1** onto panel (3), (4) and (5).  
(Repeat 8 times.)
- Insert hardware **B** onto panel (3), (4) and (5).  
(Repeat 16 times.)



\* Ensure the arrows on hardware **A1** point towards mounting positions.

## STEP 4

- Fix hardware **J1 (L/R)** into panel (3), (4) and (5) with hardware **E**.  
(Repeat 3 times for each hardware.)



First hole from the edge.

Small hole at the center.

Third hole from the edge.

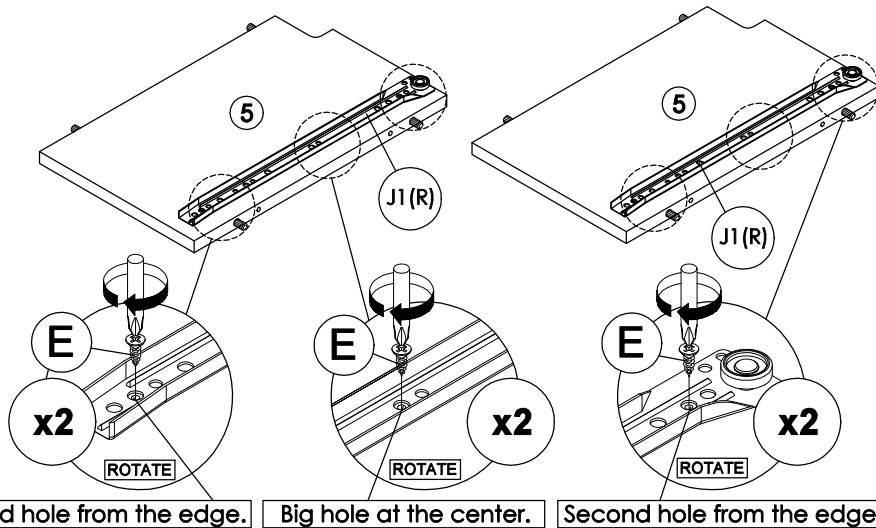
# ASSEMBLY INSTRUCTIONS

PAGE: 3/5

## MODEL : JESSIE 1.8M TV UNIT

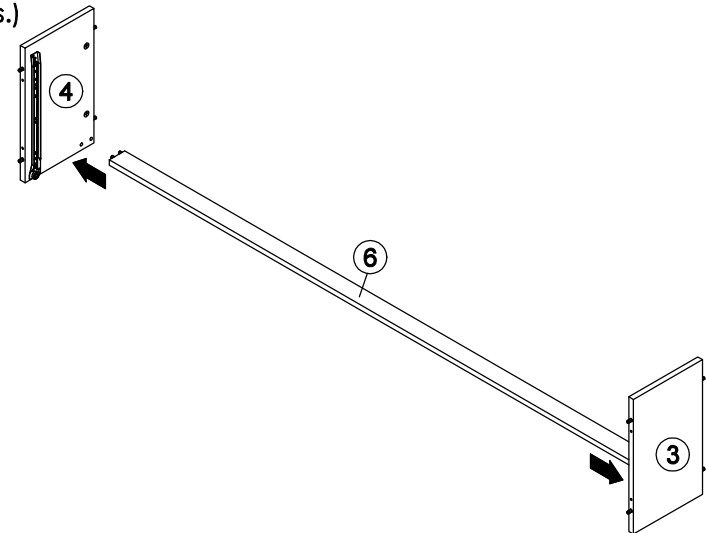
### STEP 5

- Fix hardware **J1 (R)** into panel **(5)** with hardware **E**.  
(Repeat 3 times for each hardware.)



### STEP 6

- Attach panel **(6)** to panel **(3)** and **(4)**.  
(Repeat 1 times.)



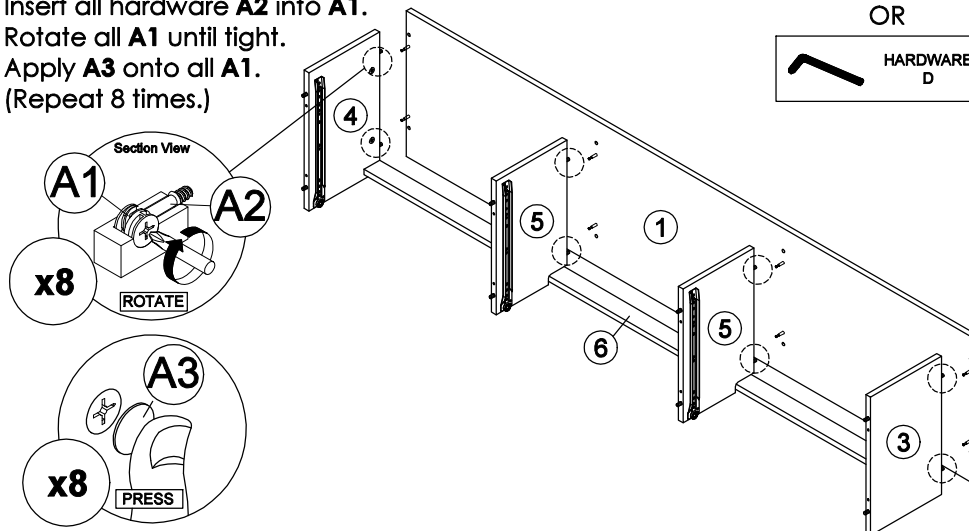
\* In this step hardware **B** are pre-inserted.

### STEP 7

- Attach panel **(1)** to panel **(3)**, **(4)** and **(5)**.
- Insert all hardware **A2** into **A1**.
- Rotate all **A1** until tight.
- Apply **A3** onto all **A1**.  
(Repeat 8 times.)

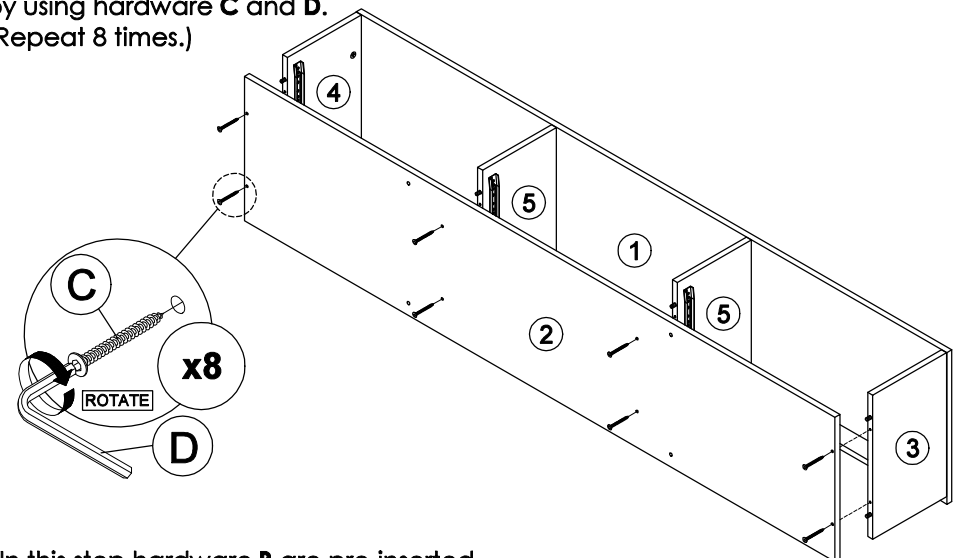


OR



### STEP 8

- Connect panel **(2)** to panel **(3)**, **(4)** and **(5)** by using hardware **C** and **D**.  
(Repeat 8 times.)



\* In this step hardware **B** are pre-inserted.

\* In this step hardware **A1**, **A2** and **B** are pre-inserted.

# ASSEMBLY INSTRUCTIONS

PAGE: 4/5

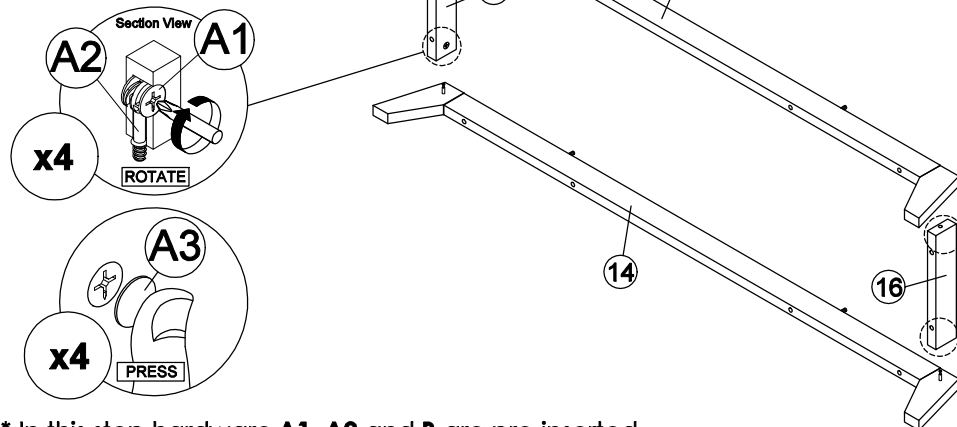
# MODEL : JESSIE 1.8M TV UNIT

## STEP 9

- Attach panel (16) to panel (14) and (15).
- Insert all hardware A2 into A1.
- Rotate all A1 until tight.
- Apply A3 onto all A1.
- (Repeat 4 times.)



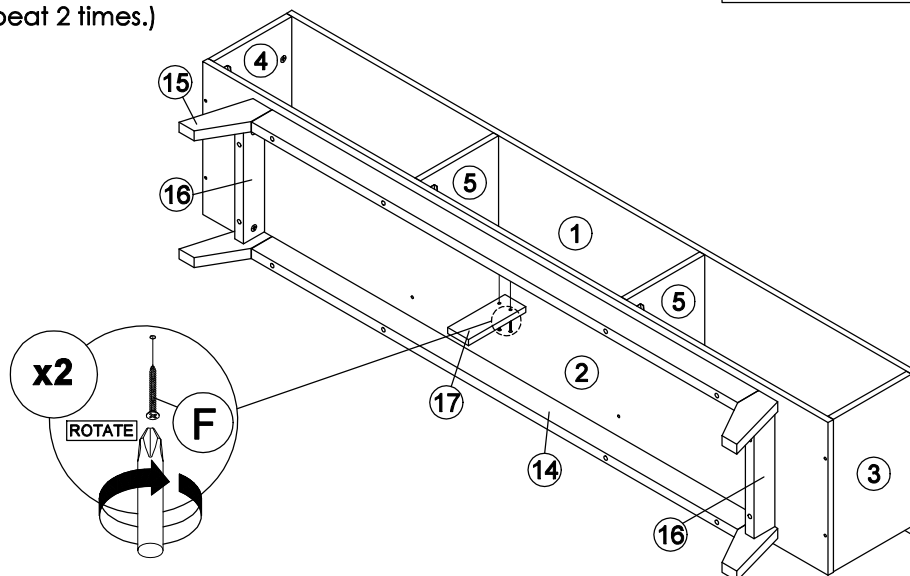
OR



\* In this step hardware A1, A2 and B are pre-inserted.

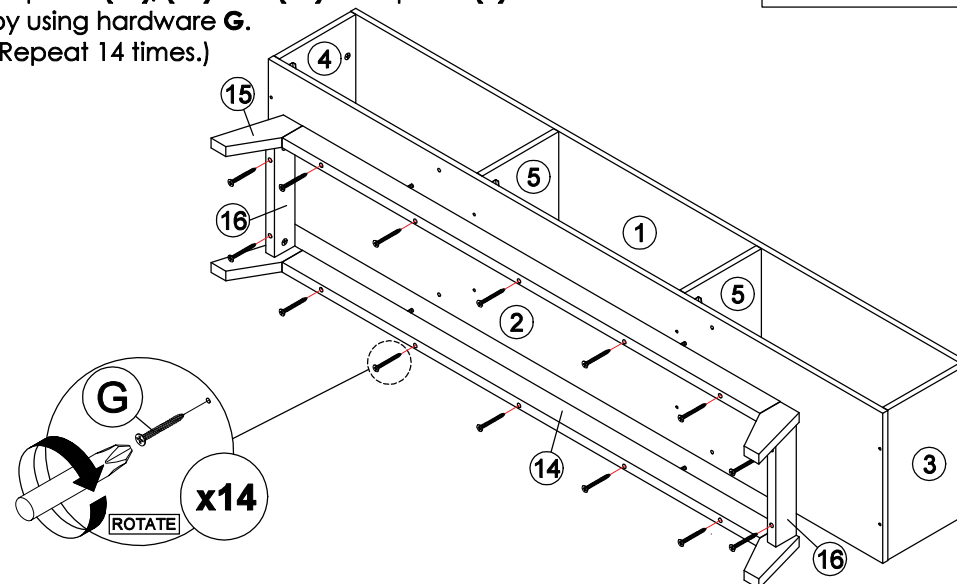
## STEP 11

- Fix panel (17) onto panel (15) by using hardware F.
- (Repeat 2 times.)



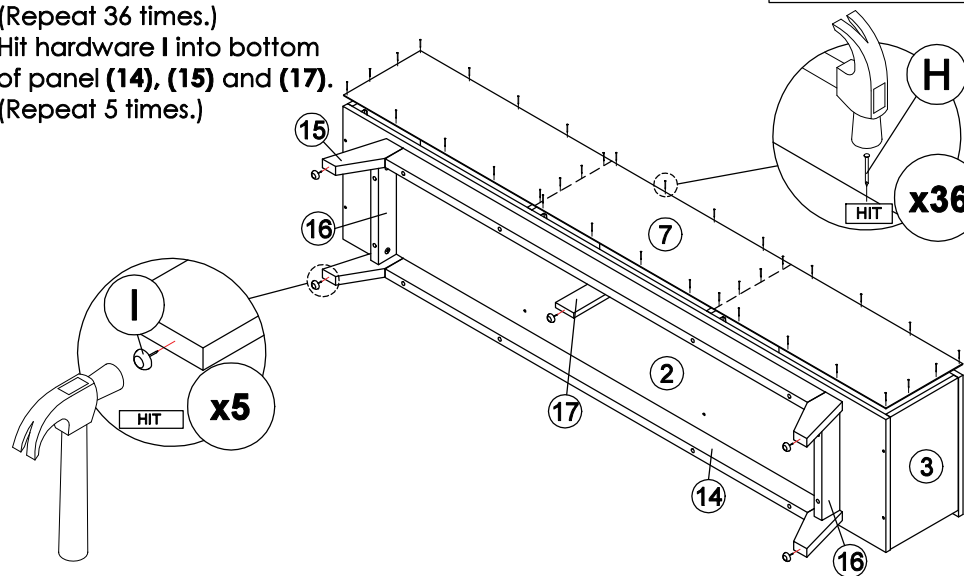
## STEP 10

- Fix panel (14), (15) and (16) onto panel (2) by using hardware G.
- (Repeat 14 times.)



## STEP 12

- Assemble panel (7) to entire body with hardware H.
- (Repeat 36 times.)
- Hit hardware I into bottom of panel (14), (15) and (17).
- (Repeat 5 times.)



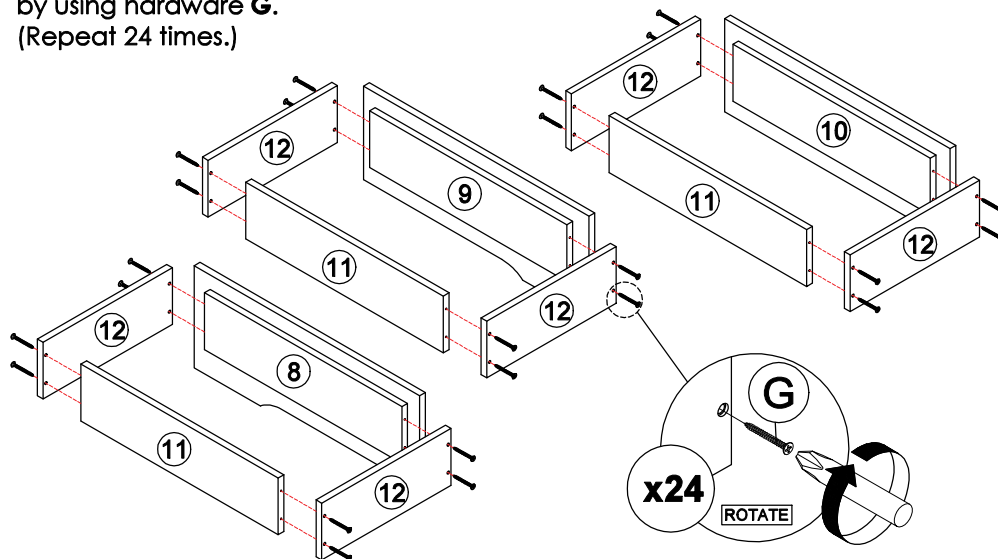
# ASSEMBLY INSTRUCTIONS

PAGE: 5/5

# MODEL : JESSIE 1.8M TV UNIT

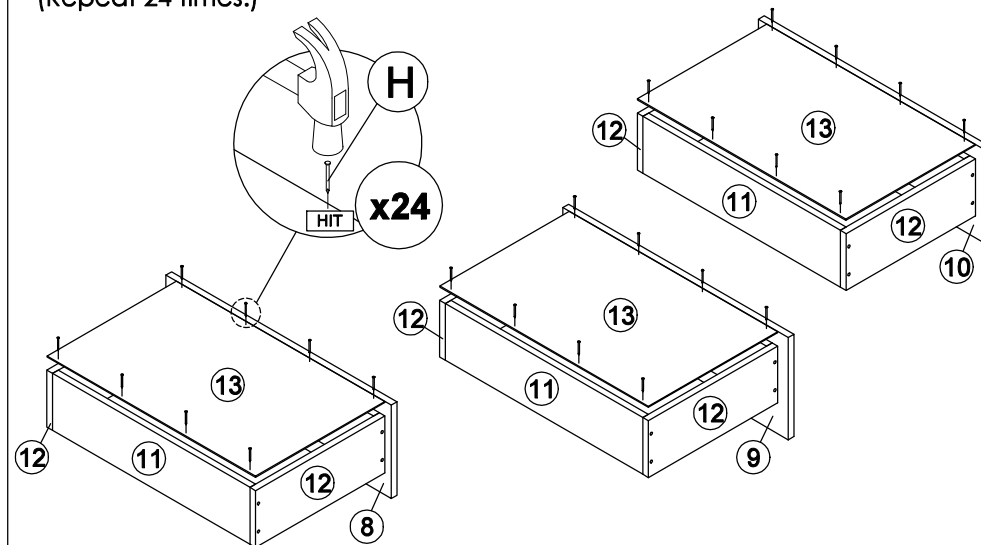
## STEP 13

- Assemble panel (12) with panel (8) or (9) or (10) and (11) by using hardware G. (Repeat 24 times.)



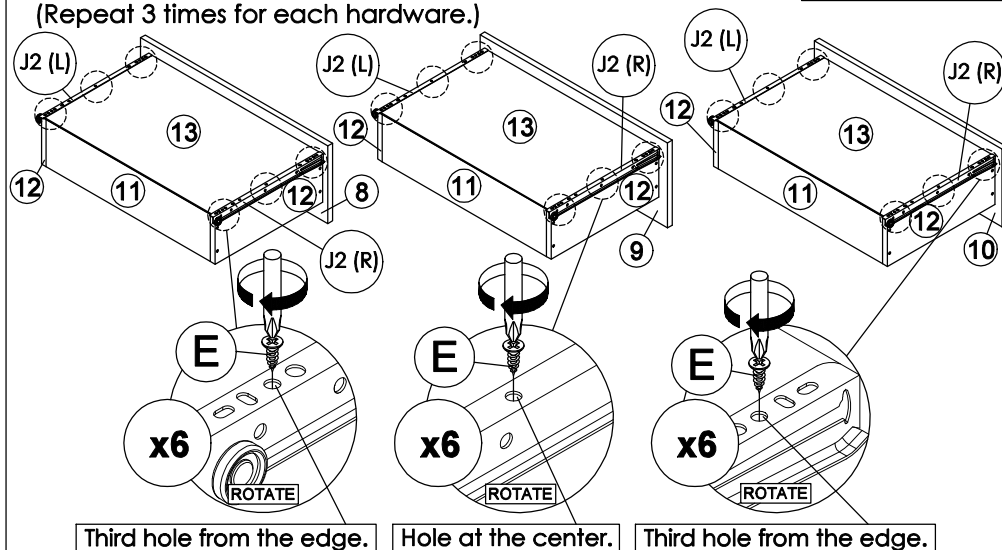
## STEP 14

- Assemble panel (13) to entire body with hardware H. (Repeat 24 times.)



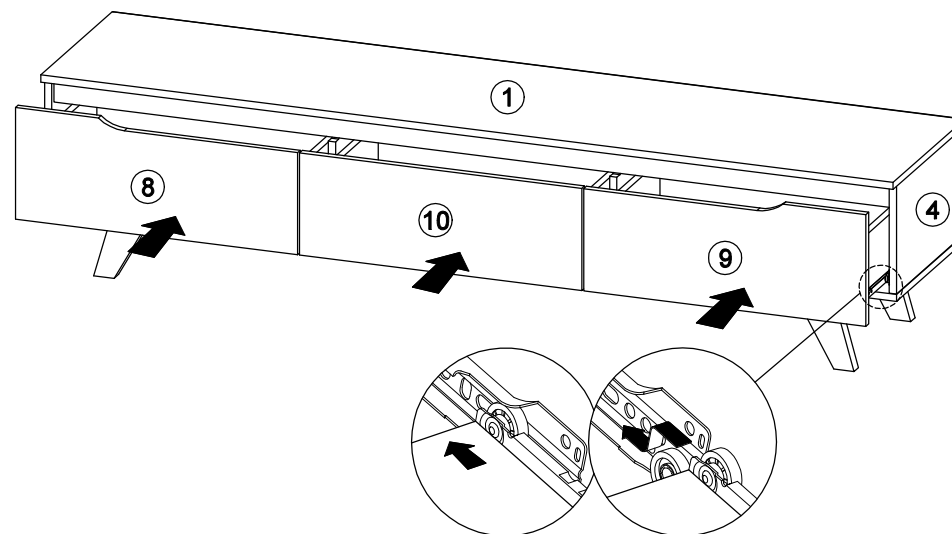
## STEP 15

- Assemble hardware J2 (L/R) to panel (13) by using hardware E. (Repeat 3 times for each hardware.)



## STEP 16

- Put all the drawer in place along the drawer slides.



\*Hardware J2 (L/R) shall be leaning against panel (8) or (9) or (10) when assembling.