

# ASSEMBLY INSTRUCTIONS

PAGE: 1/4

MODEL : UB 1289

Before you begin, please follow assembly instructions carefully, then follow them step by step.

Read instruction carefully . See Furniture Parts list and Hardware List for guidance . Be sure you have all parts before you start assembling . Place and assemble furniture on a clean flat soft surface , such as carpet or rug to prevent being scratched .

PART LIST		QTY	HARDWARE		
1	TOP PANEL	1 PC	A	MINI FIX A1  A2  A3 	10 SETS
2	BOTTOM PANEL	1 PC	B	M8 X 30MM WOOD DOWEL 	20 PCS
3	SIDE PANEL (L)	1 PC	C	M6 X 50MM CSK CAP WOOD SCREW 	6 PCS
4	SIDE PANEL (R)	1 PC	D	ALLEN KEY M4 	1 PC
5	MIDDLE PANEL	1 PC	E	M4 X 38MM C.B SCREW 	8 PCS
6	BONE PANEL	1 PC	F	M3.5 X 16MM C.B SCREW 	16 PCS
7	BACK PANEL	1 PC	G	5/8 NAIL 	10 PCS
8	DRAWER FRONT	1 PC	H	JCBC Screw M6 x 70 	8 PCS
9	DRAWER BACK	1 PC	I	SPRING WASHER M6 	8 PCS
10	DRAWER SIDE	2 PCS	J	FLAT WASHER M6 	8 PCS
11	BOTTOM DRAWER	1 PC	K	ONE HOLE L BRACKET (2MM) 	2 PCS
12	LEG	4 PCS	L	14" DRAWER SLIDE  L1 (L/R) L2 (L/R)	2 PCS

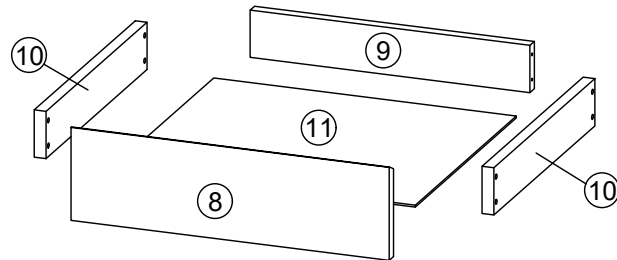
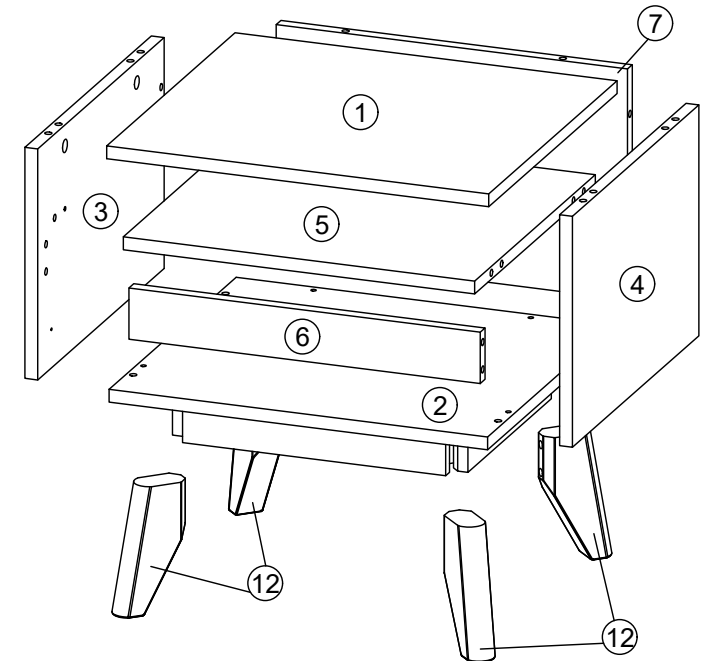
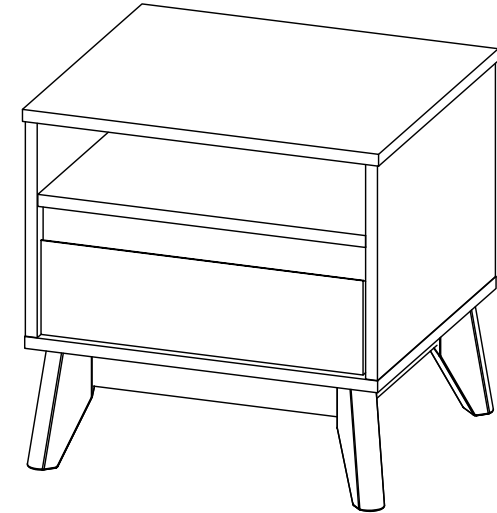
SELF-PREPARED TOOLS: Tools below are NOT included in package.



SCREWDRIVER



HAMMER



## Reminder:

Please ensure that all surfaces and edges with colours/laminations are facing forward/outward.

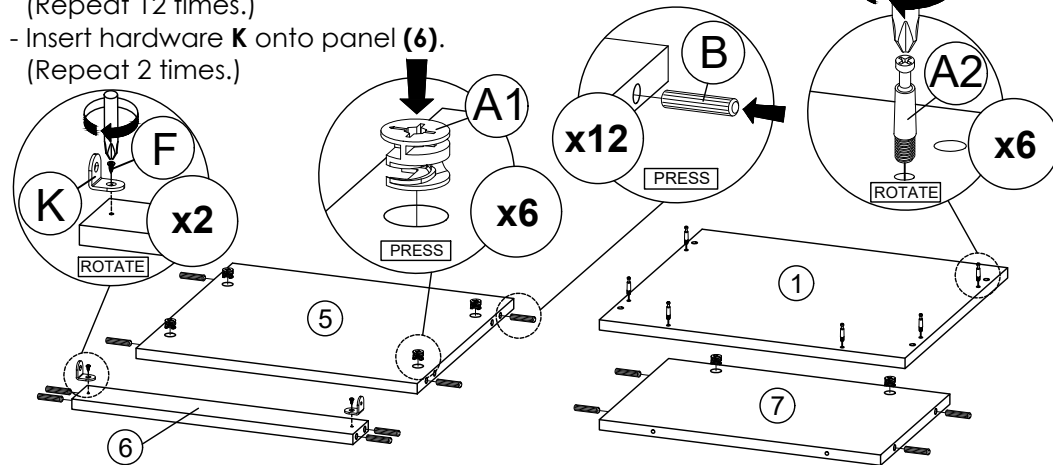
# ASSEMBLY INSTRUCTIONS

PAGE: 2/4

# MODEL : UB 1289

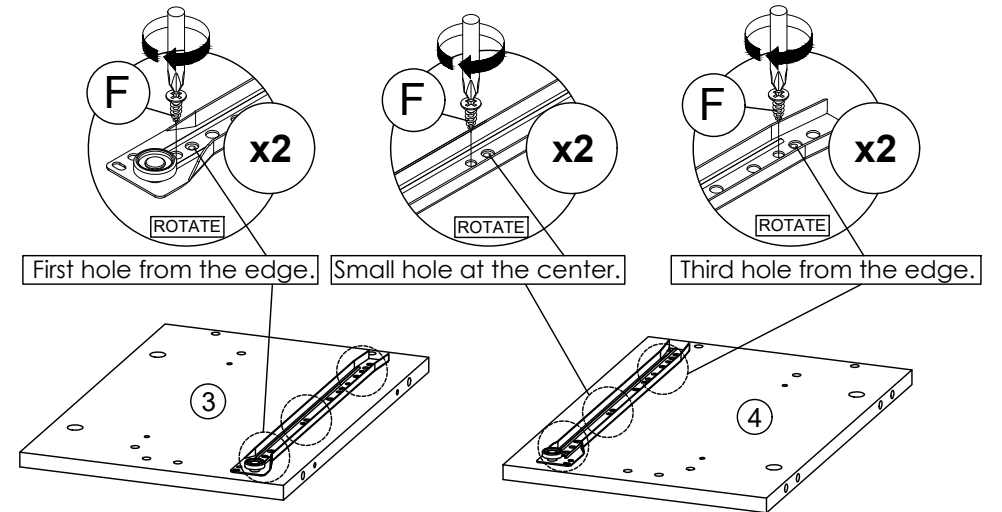
## STEP 1

- Insert hardware **A1** onto panel (5) and (7).  
(Repeat 6 times.)
- Insert hardware **A2** onto panel (1).  
(Repeat 6 times.)
- Insert hardware **B** onto panel (5), (6) and (7).  
(Repeat 12 times.)
- Insert hardware **K** onto panel (6).  
(Repeat 2 times.)



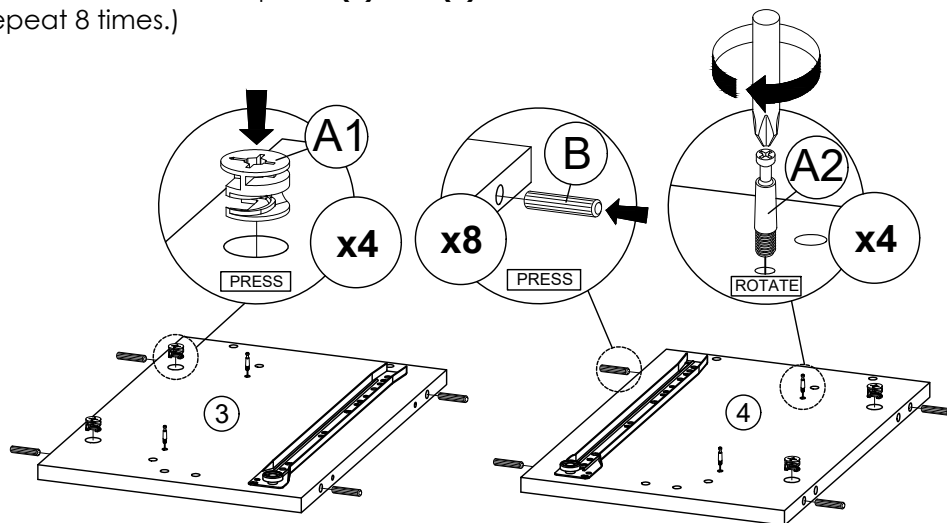
## STEP 2

- Fix hardware **L1 (L/R)** into panel (3) and (4) with hardware **F**.  
(Repeat 3 times for each hardware.)



## STEP 3

- Insert hardware **A1** and **A2** onto panel (3) and (4).  
(Repeat 4 times.)
- Insert hardware **B** onto panel (3) and (4).  
(Repeat 8 times.)

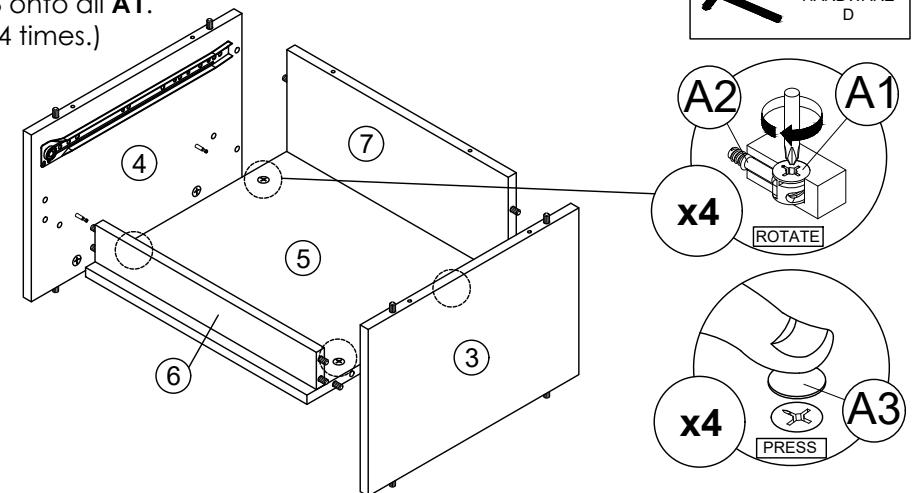


## STEP 4

- Attach panel (5), (6) and (7) to panel (3) and (4).
- Insert all hardware **A2** into **A1**.
- Rotate all **A1** until tight.
- Apply **A3** onto all **A1**.  
(Repeat 4 times.)



OR



\* In this step hardware **A1**, **A2** and **B** are pre-inserted.

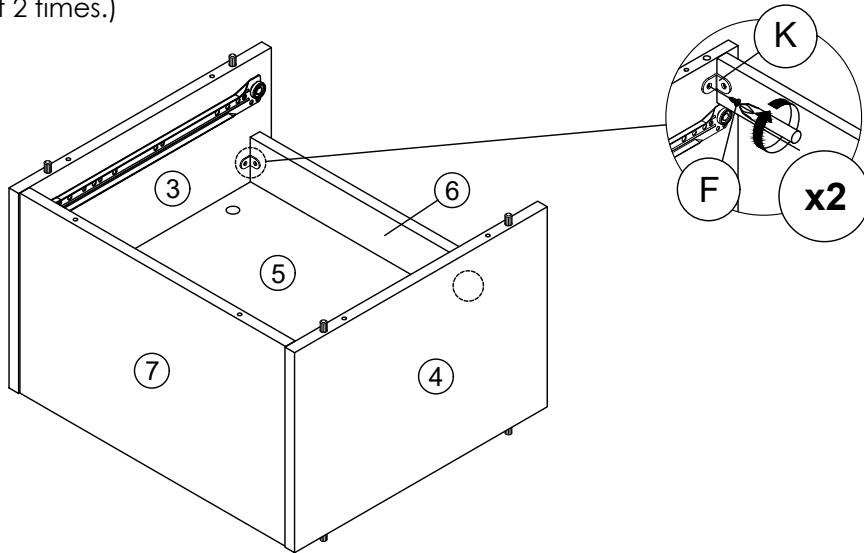
# ASSEMBLY INSTRUCTIONS

PAGE: 3/4

# MODEL : UB 1289

## STEP 5

- Assemble hardware **K** to the bottom of cabinet with hardware **F**.  
(Repeat 2 times.)

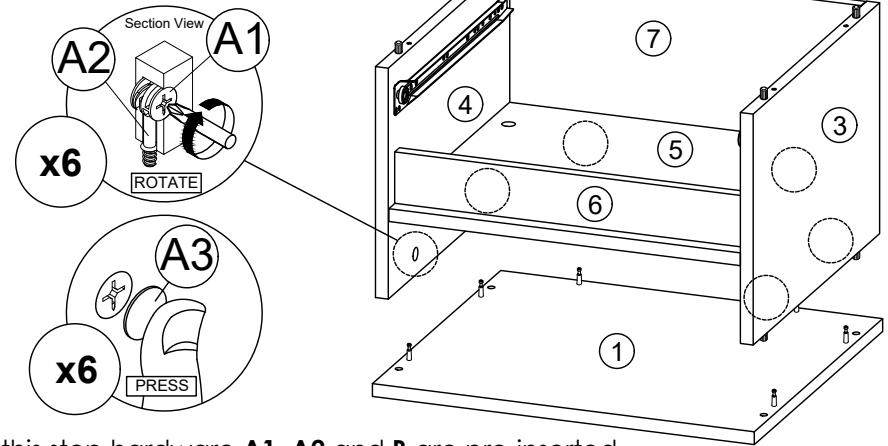


## STEP 6

- Attach panel **(1)** to panel **(3)**, **(4)** and **(7)**.
- Insert all hardware **A2** into **A1**.
- Rotate all **A1** until tight.
- Apply **A3** onto all **A1**.  
(Repeat 6 times.)



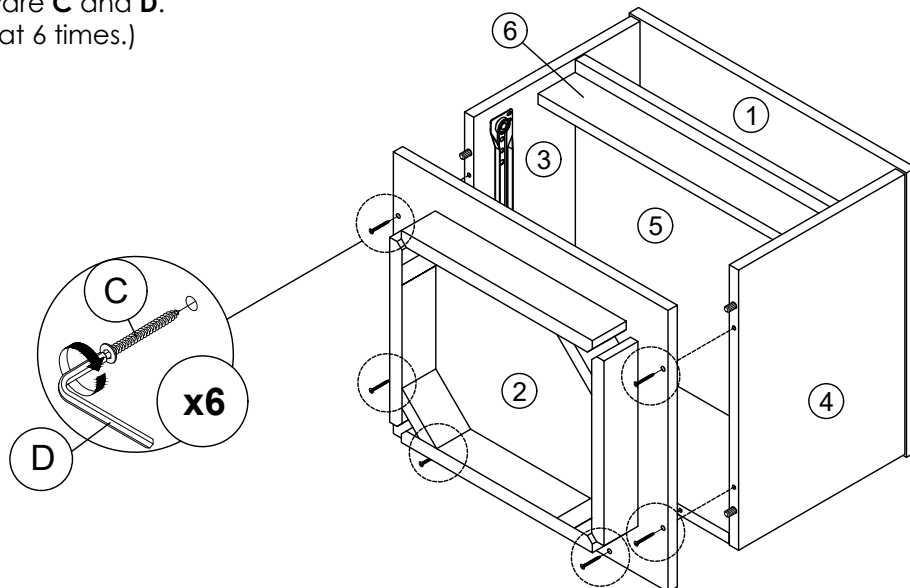
OR



\* In this step hardware **A1**, **A2** and **B** are pre-inserted.

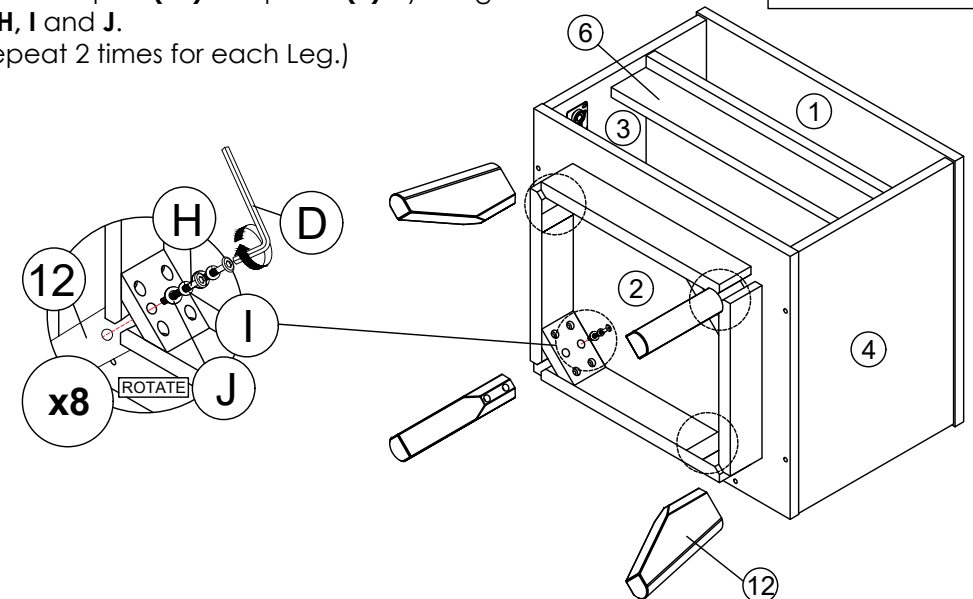
## STEP 7

- Connect panel **(2)** to panel **(3)**, **(4)** and **(7)** by using hardware **C** and **D**.  
(Repeat 6 times.)



## STEP 8

- Assemble part **(12)** into panel **(2)** by using hardware **D**, **H**, **I** and **J**.  
(Repeat 2 times for each Leg.)



# ASSEMBLY INSTRUCTIONS

PAGE: 4/4

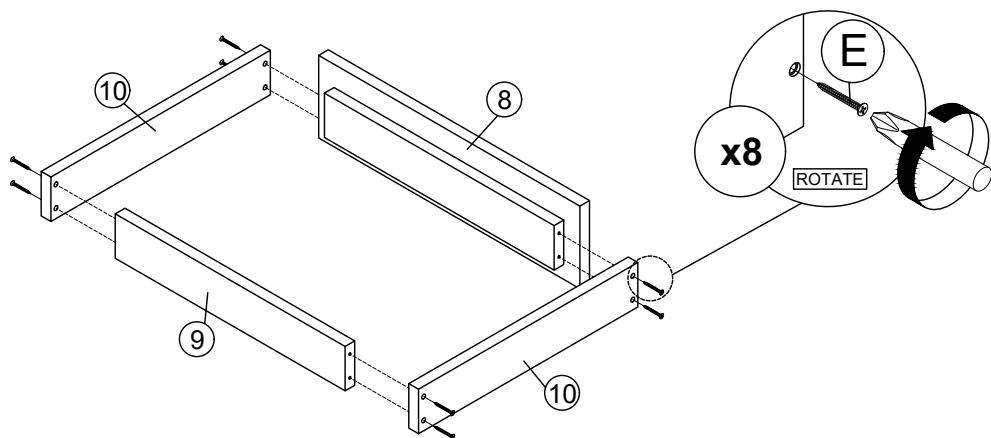
# MODEL : UB 1289

## STEP 9

- Assemble panel (10) to panel (8) and (9) by using hardware

**E.**

(Repeat 8 times for each Leg.)

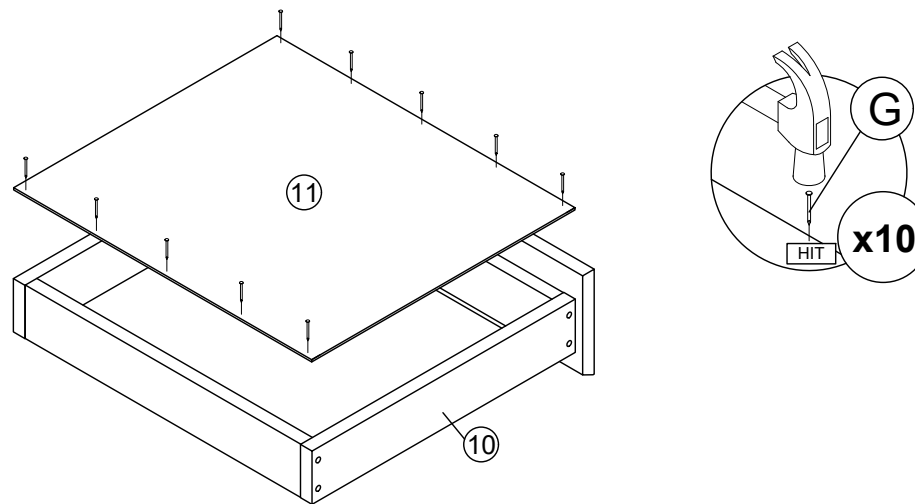


## STEP 10

- Assemble panel (11) to entire body with hardware **G.**

(Repeat 10 times.)

\* In this step only show one of the drawers.

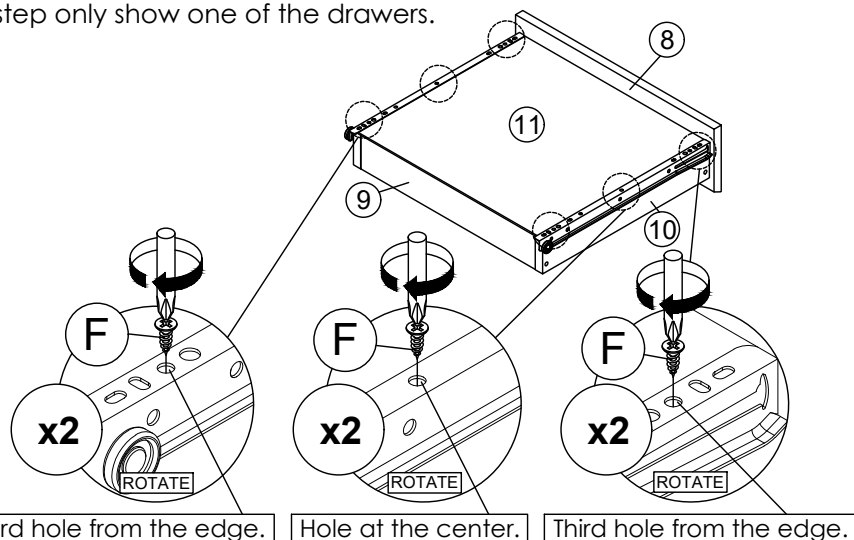


## STEP 11

- Assemble hardware **L2 (L/R)** to panel (11) by using hardware **F.**

(Repeat 3 times for each hardware.)

\* In this step only show one of the drawers.



\*Hardware **L2 (L/R)** shall be leaning against panel (10) when assembling.

## STEP 12

- Put all the drawer in place along the drawer slides.

