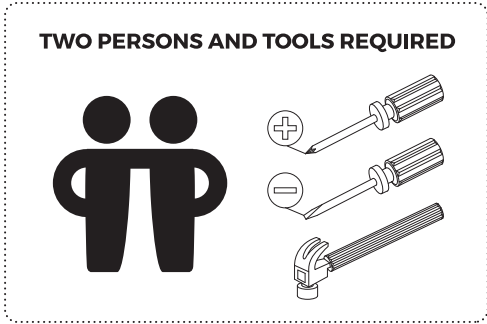


# ASSEMBLY INSTRUCTIONS

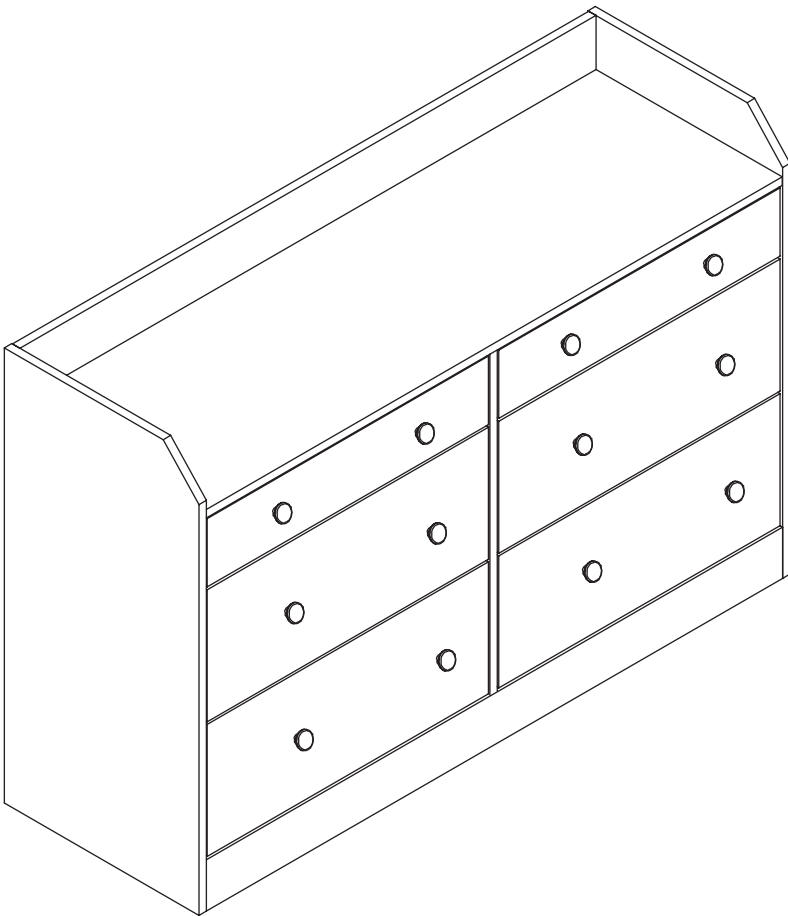
Please read the instructions carefully before assembly and keep it for future reference.



**Well done!**

**Love our furniture?  
Share it!**

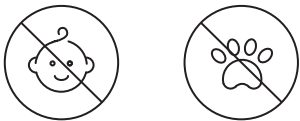
Tag us on instagram or facebook  
@KampradsOikos1943



## SIDEBOARD

**Model** :SB-GLAY-COD6  
**Version 1.0**

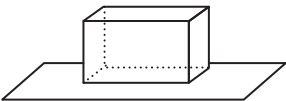
Assembly and Maintenance Tips



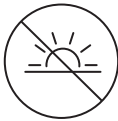
1. Keep children and pets away from the working area as small parts may cause choking if swallowed.



2. Some furniture may require two persons to assemble for safety reasons.



3. To protect the surfaces of the furniture, lay the parts and perform the assembly on top of a soft mat (such as a carpet or cardboard).



4. Keep the furniture away from direct sunlight to avoid fading.



5. Use a soft, damp cloth to clean or wipe surfaces.

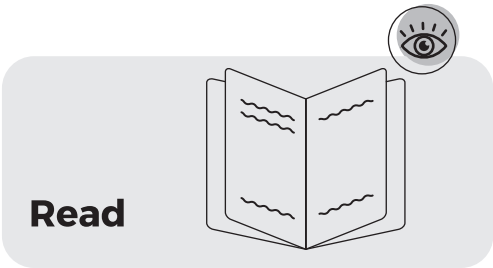


6. Never use ammonia-based or abrasive cleaning products to clean as they may damage the finish.

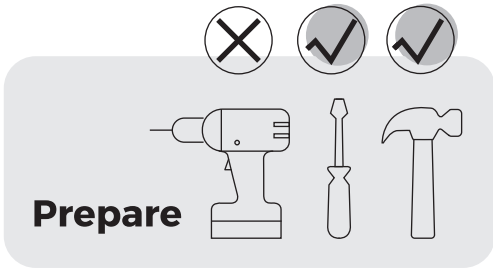


7. Do not place liquids or wet items on furniture as they may leave water marks/stains. Always use a coaster or runner to protect the furniture surface.

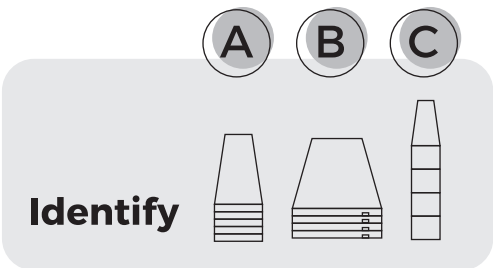
Assembly Checklist



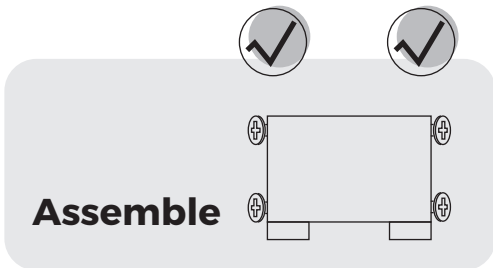
Read through the instructions carefully before you begin.



Make sure you have all the required tools. Never use power tools unless instructed.



Identify and lay out all of the components before you begin assembly.




Please fully tighten all screws during the assembly process unless instructed not to do so.

Helpful Information

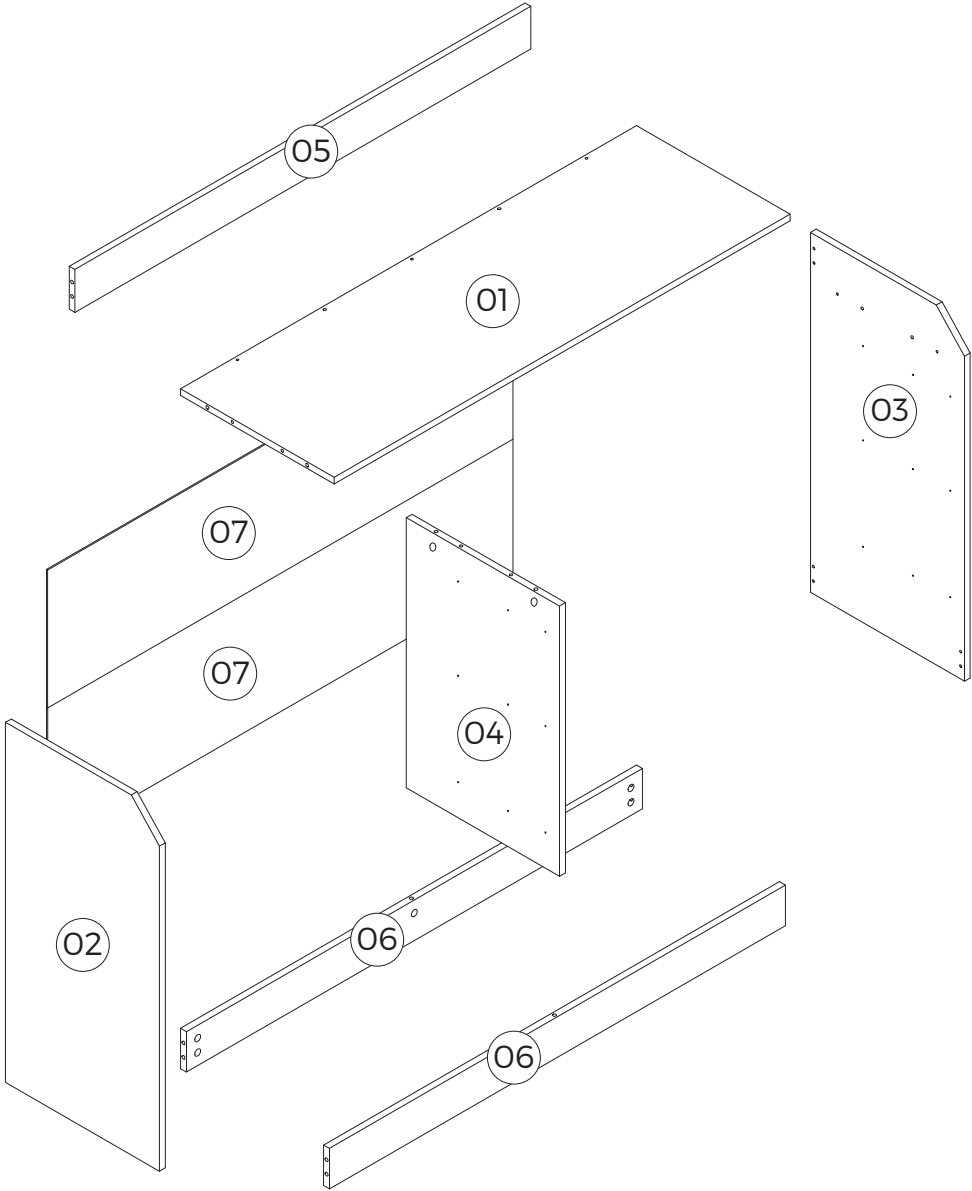
- ! Never use power tools unless specifically instructed. They can damage your components or hardware if used incorrectly.
- ! The most common mistakes made during assembly are using the wrong hardware or getting components back to front.
- ! When assembling the product, it is recommended to do so on top of a soft surface such as a carpet or cardboard to avoid scratches and damages to the furniture surfaces.
- ! Bulky items such as wardrobes should be assembled in the location when the assembled piece will be used to avoid moving them through doors or tight passages.
- ! Never use any glue until you are certain that the parts belong together.
- ! Periodically check that all connections are secured and follow all care and maintenance instructions stated.
- ! If you encounter any assembly difficulties or missing components and/or hardware, please contact our Customer Support for further assistance.

Hardware List

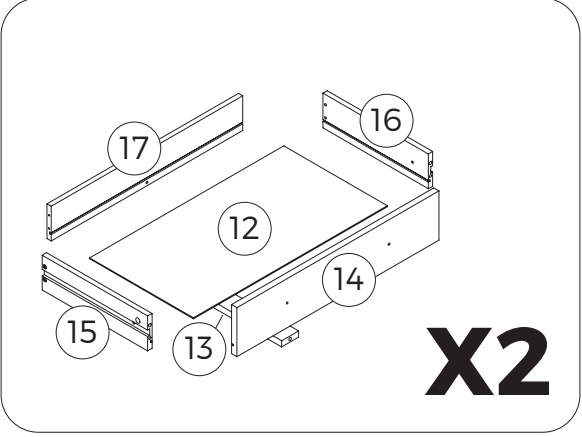
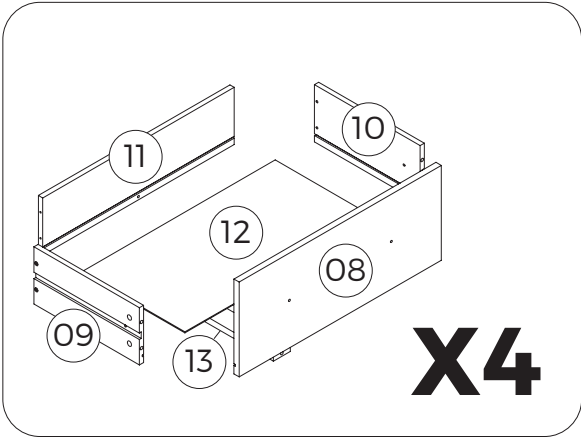
Please ensure that all parts and hardware are in the packaging contents. If there are any missing parts and/or hardware, please contact our Customer Support as soon as possible.

<div>Part A</div> <div>46pcs 7x35mm</div> <div></div>	<div>Part B</div> <div>26pcs 15x12mm</div> <div></div>	<div>Part C</div> <div>12pcs Ø6x30mm</div> <div></div>	<div>Part D</div> <div>33pcs M4x40mm</div> <div></div>
<div>Part E</div> <div>20pcs 12x10mm</div> <div></div>	<div>Part F</div> <div>2pcs</div> <div></div>	<div>Part G</div> <div>12pcs M4x11mm</div> <div></div>	<div>Part H</div> <div>12pcs 278mm</div> <div></div>
<div>Part I</div> <div>4pcs</div> <div></div>	<div>Part J</div> <div>12pcs</div> <div></div>	<div>Part K</div> <div>2pcs M4x30mm</div> <div></div>	<div>Part L</div> <div>2pcs</div> <div></div>
<div>Part M</div> <div>12pcs M4x18mm</div> <div></div>	<div>Part N</div> <div>12pcs M3x14mm</div> <div></div>	<div>Part O</div> <div>36pcs M3x12mm</div> <div></div>	<div>Part P</div> <div>22pcs 12x10mm</div> <div></div>
<div>Part Q</div> <div>2pcs M4x14mm</div> <div></div>			

Parts List

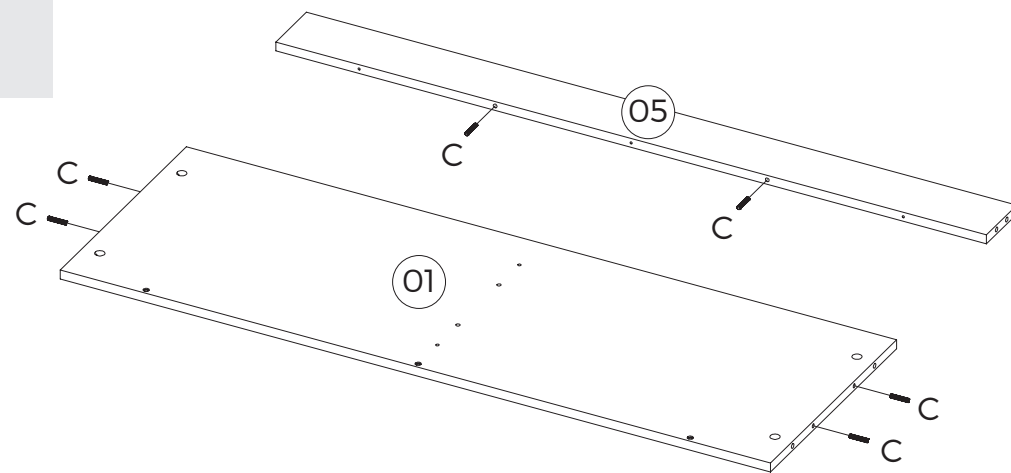


Wipe only with a dry cloth



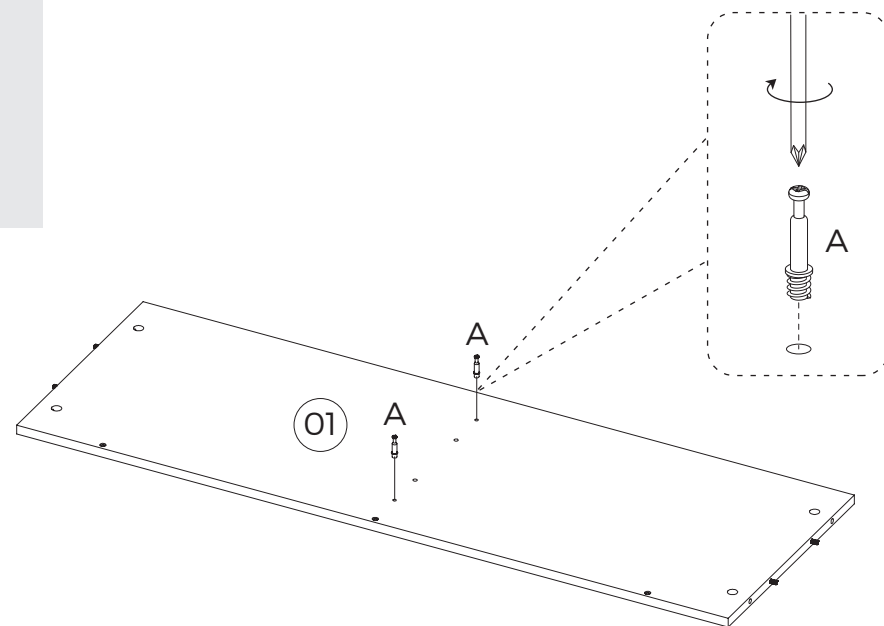
STEP 1

Part C  
6pcs  
Ø6x30mm



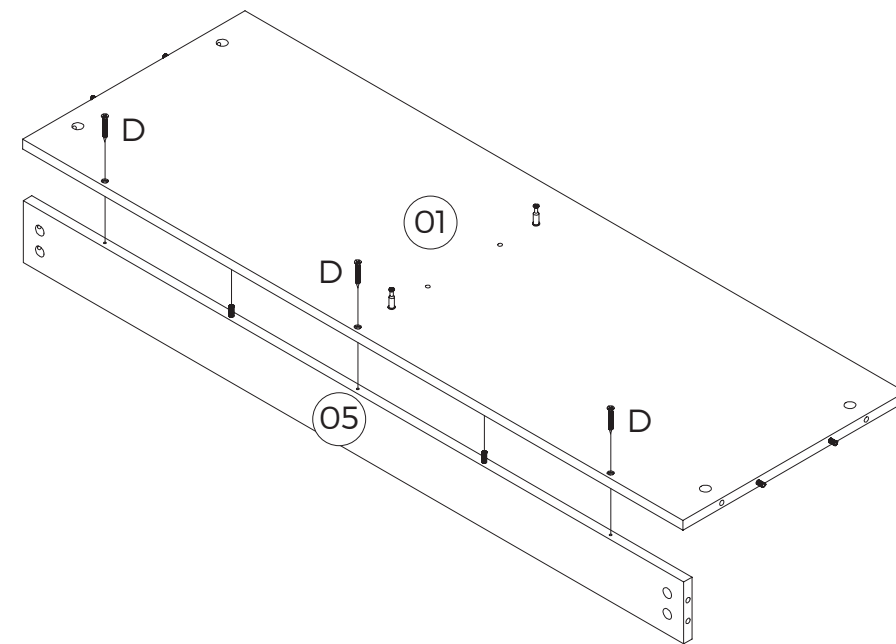
STEP 2

Part A  
2pcs  
7x35mm



STEP 3

Part D  
3pcs  
M4x40mm



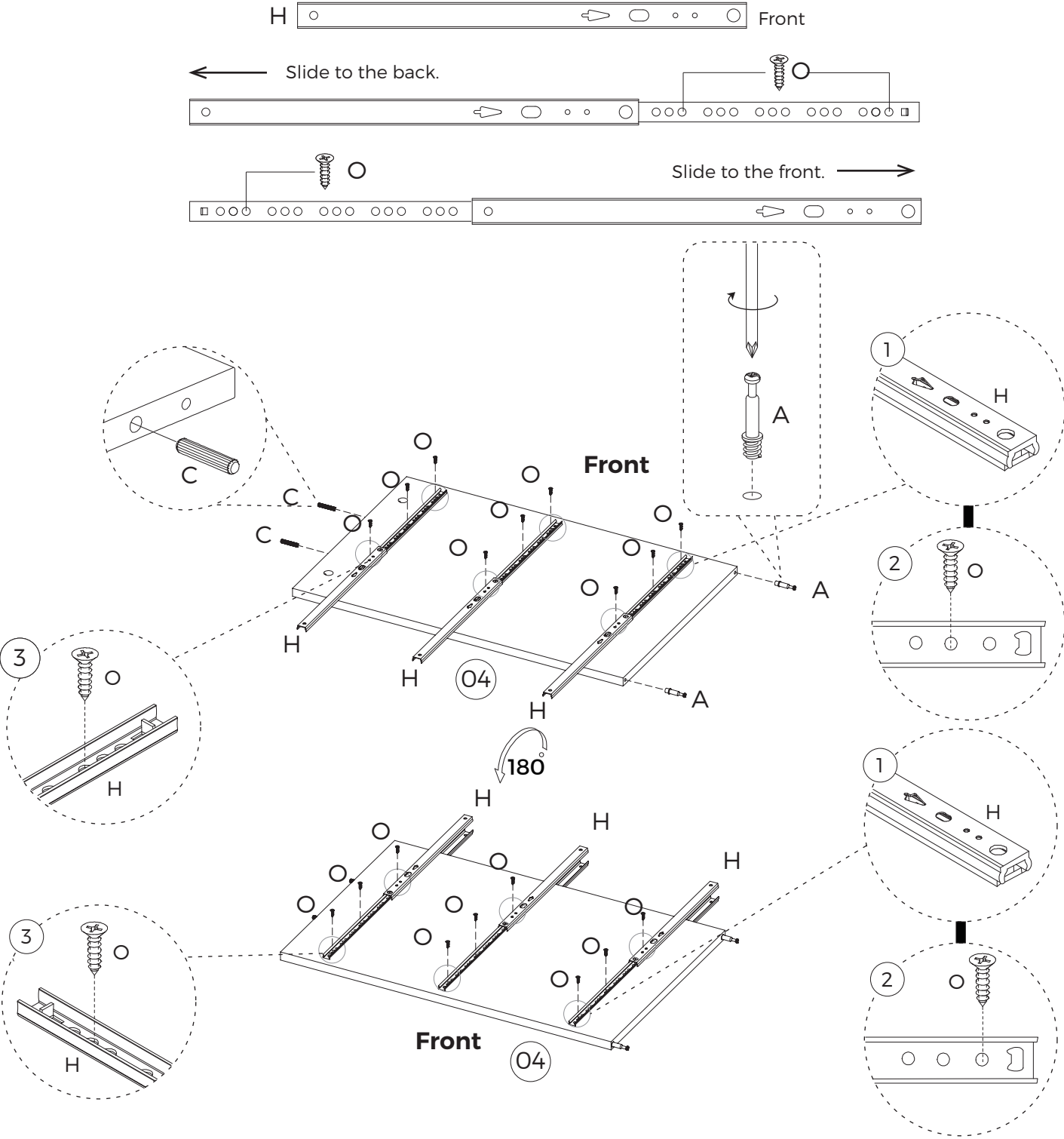
STEP 4

**Part K**  
6pcs  
278mm

**Part O**  
18pcs  
M3x12mm

**Part C**  
2pcs  
Ø6x30mm

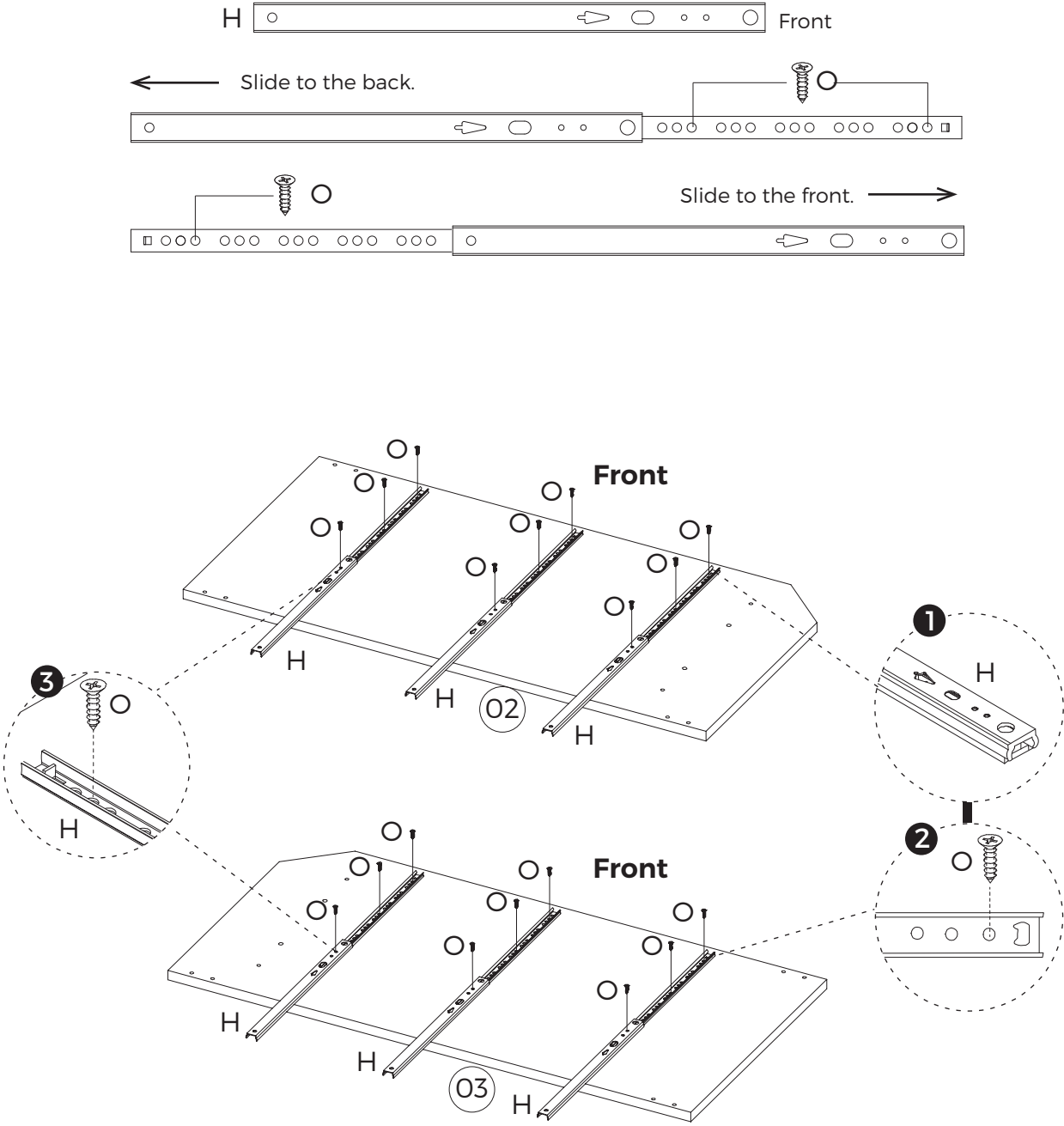
**Part A**  
2pcs  
7x35mm



STEP 5

**Part K**  
6pcs  
278mm

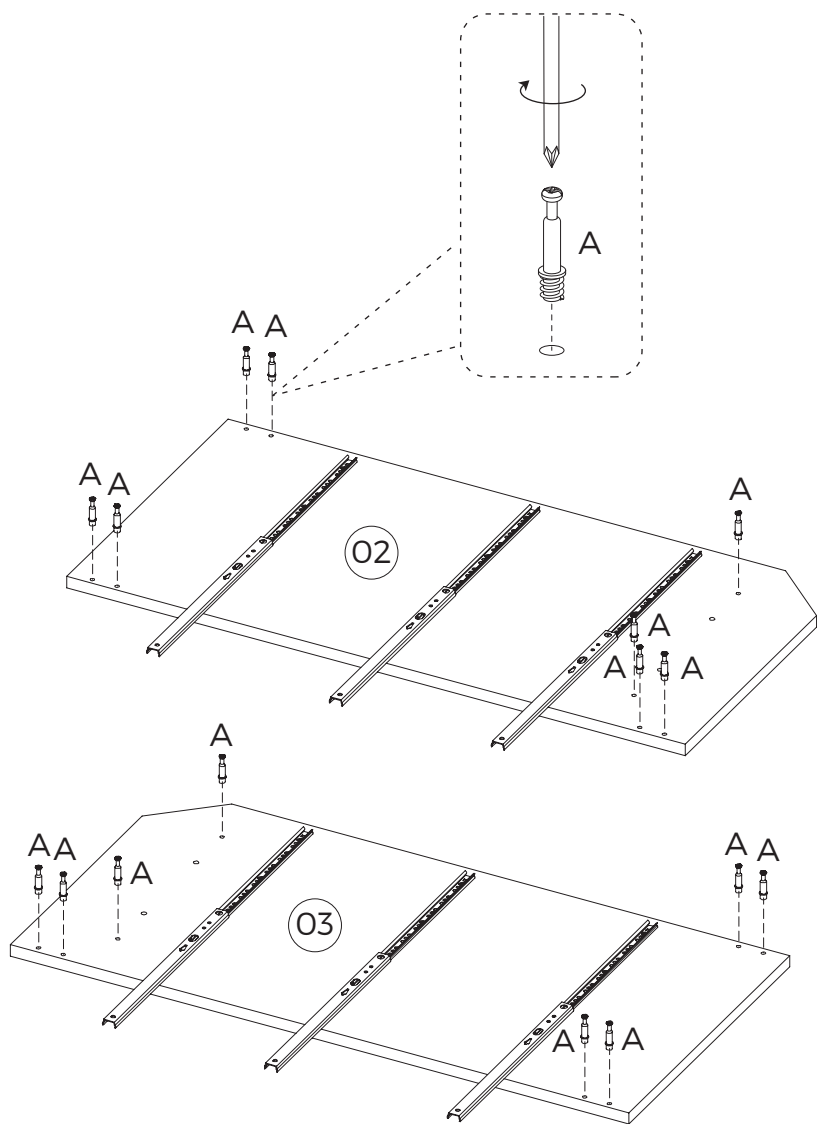
**Part O**  
18pcs  
M3x12mm



STEP 6

Part A

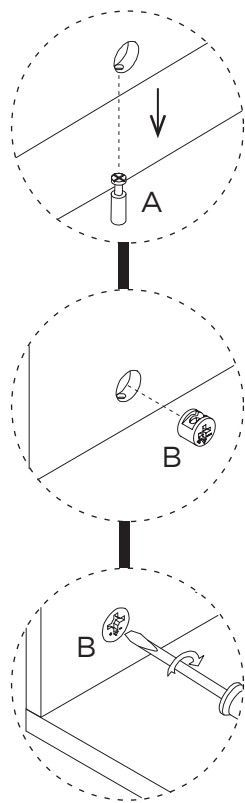
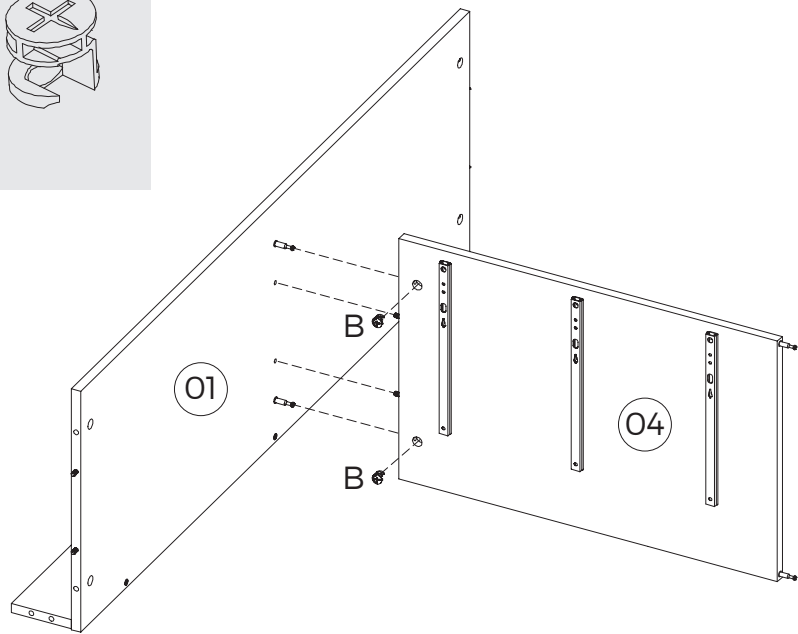
16pcs  
7x35mm



STEP 7

Part B

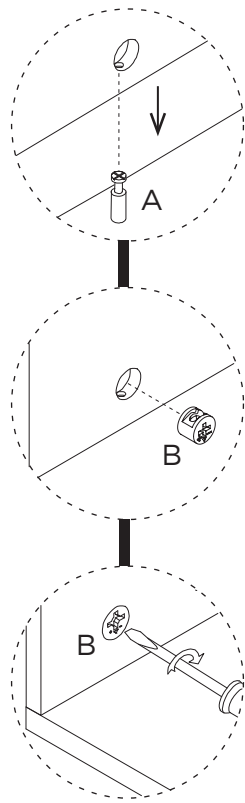
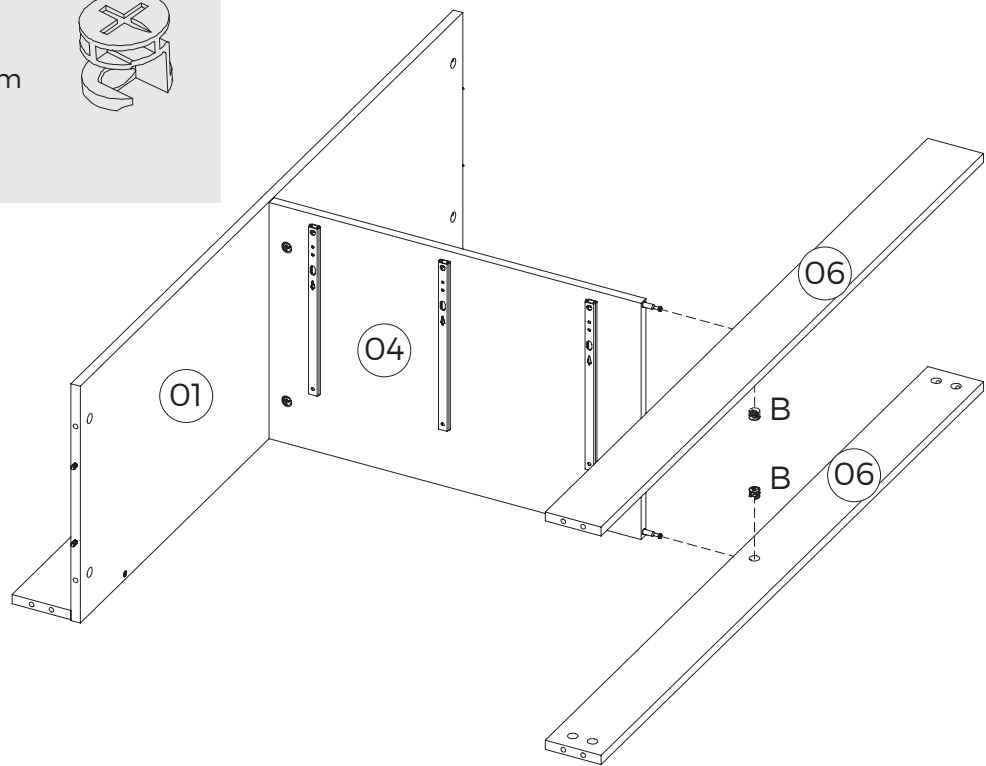
2pcs  
15x12mm



STEP 8

Part B

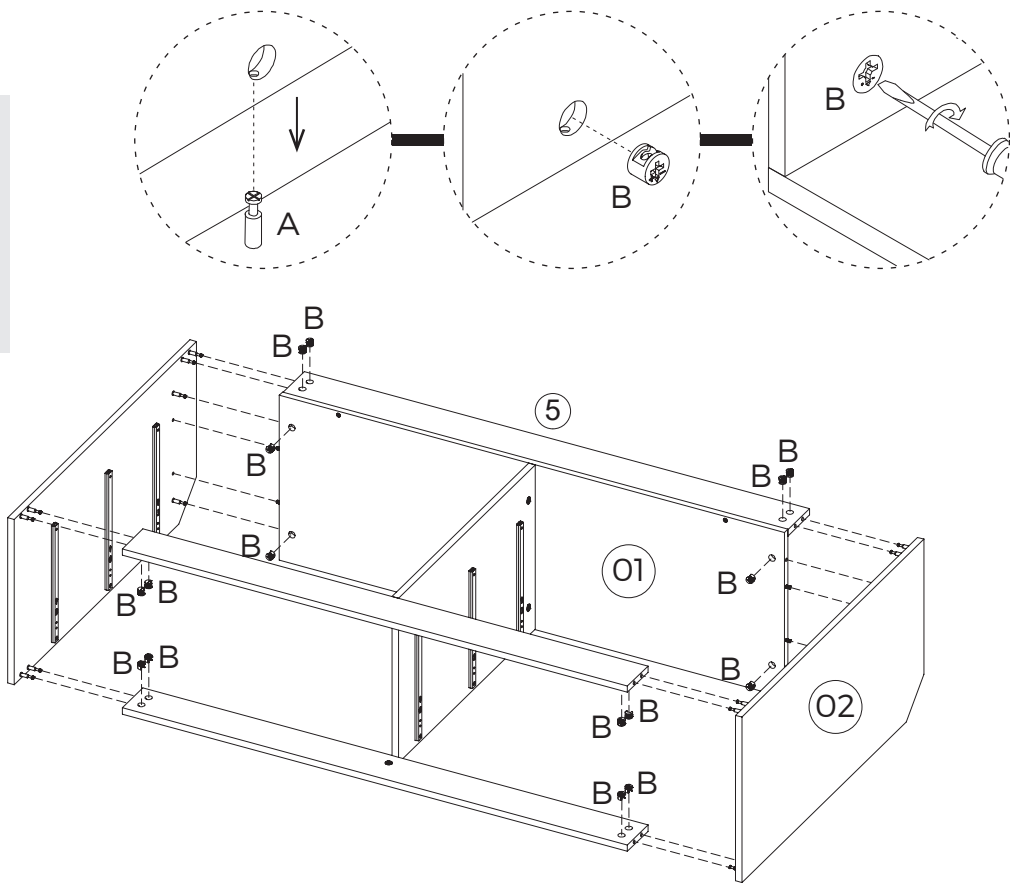
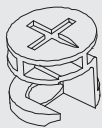
2pcs  
15x12mm



STEP 9

Part B

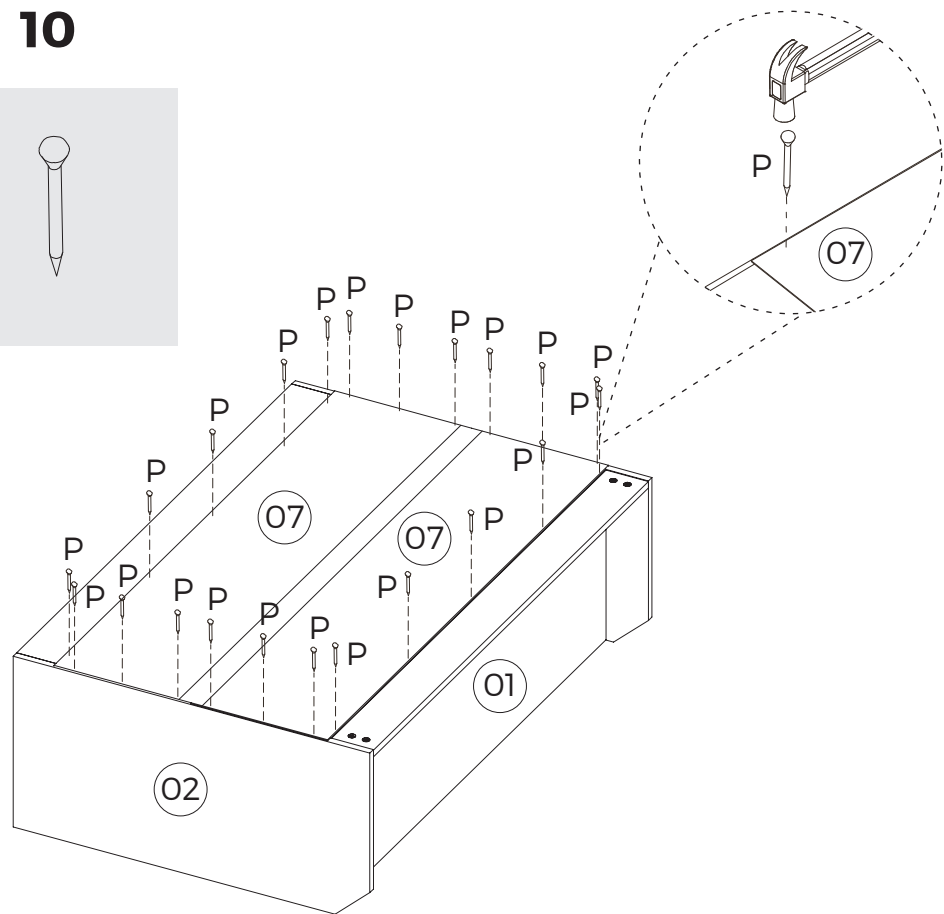
16pcs  
15x12mm



STEP 10

Part P

22pcs  
12x10mm



YES

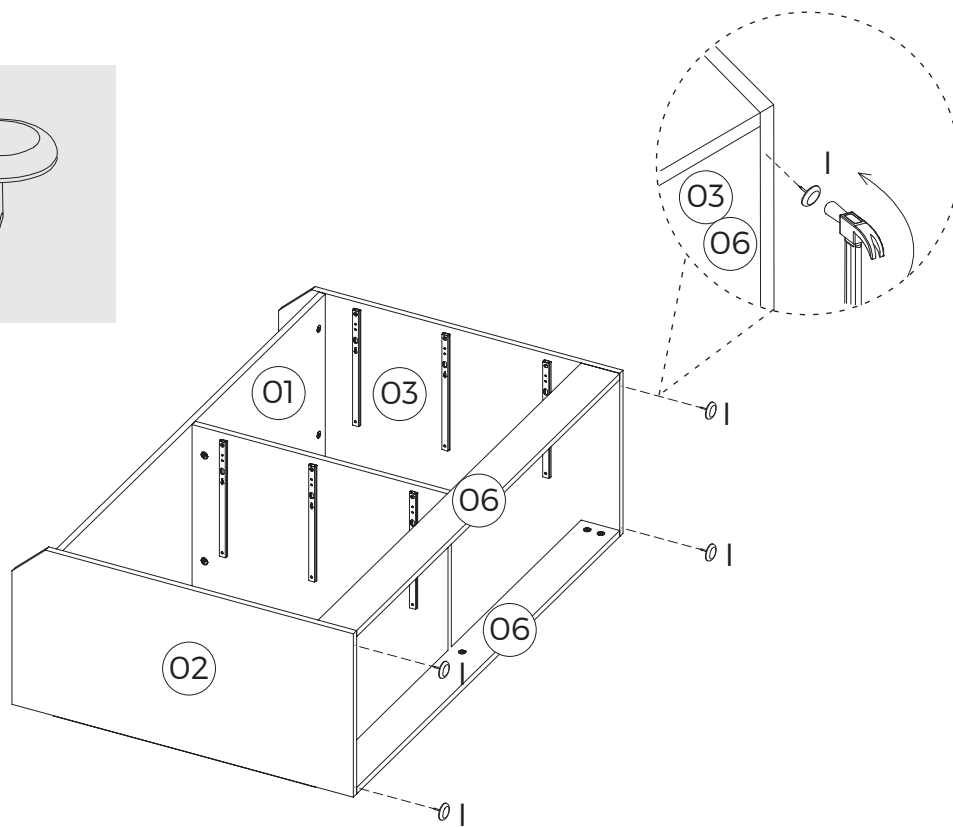
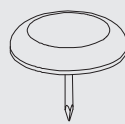
NO

Make sure that Part 07 is properly aligned before installation.

STEP 11

Part I

4pcs



STEP 12

Part Q

2pcs  
M4x14mm



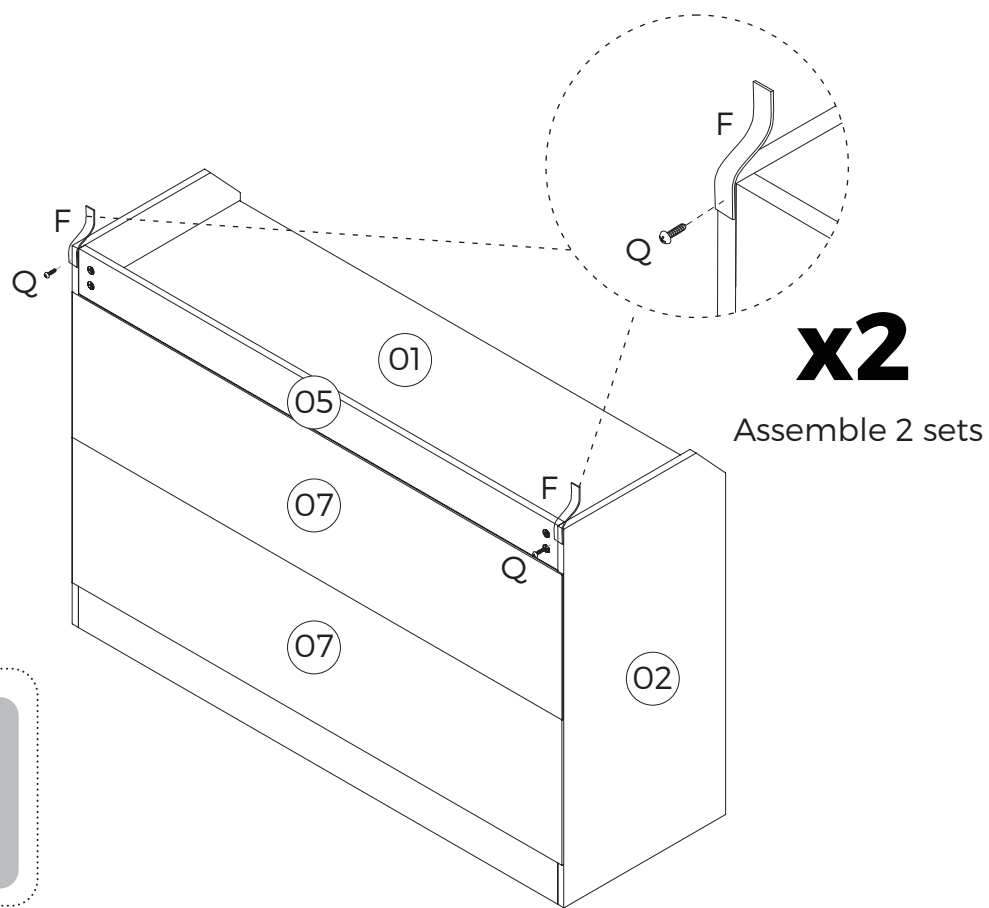
Part F

2pcs



OPTIONAL •

Install Part F only if you wish to secure the product to a wall. See Step 16.





STEP 13

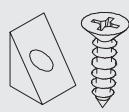
**Part B**  
4pcs  
15x12mm



**Part J**  
8pcs



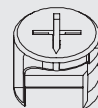
**Part N**  
8pcs  
M3x14mm



**Part M**  
8pcs  
M4x18mm



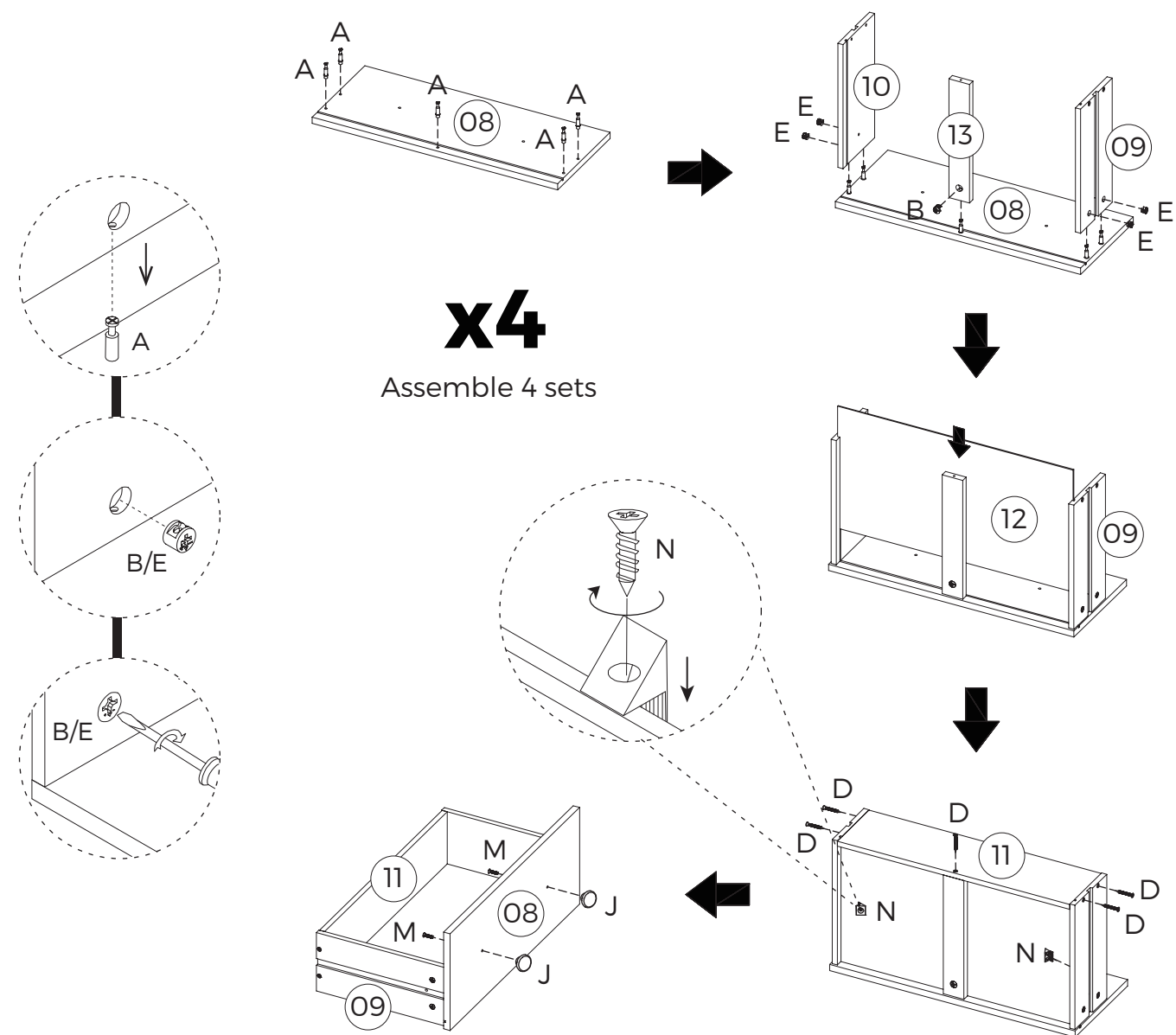
**Part E**  
16pcs  
12x10mm



**Part D**  
20pcs  
M4x40mm



**Part A**  
20pcs  
7x35mm



STEP 14

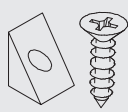
**Part B**  
2pcs  
15x12mm



**Part J**  
4pcs



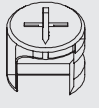
**Part N**  
4pcs  
M3x14mm



**Part M**  
4pcs  
M4x18mm



**Part E**  
4pcs  
12x10mm



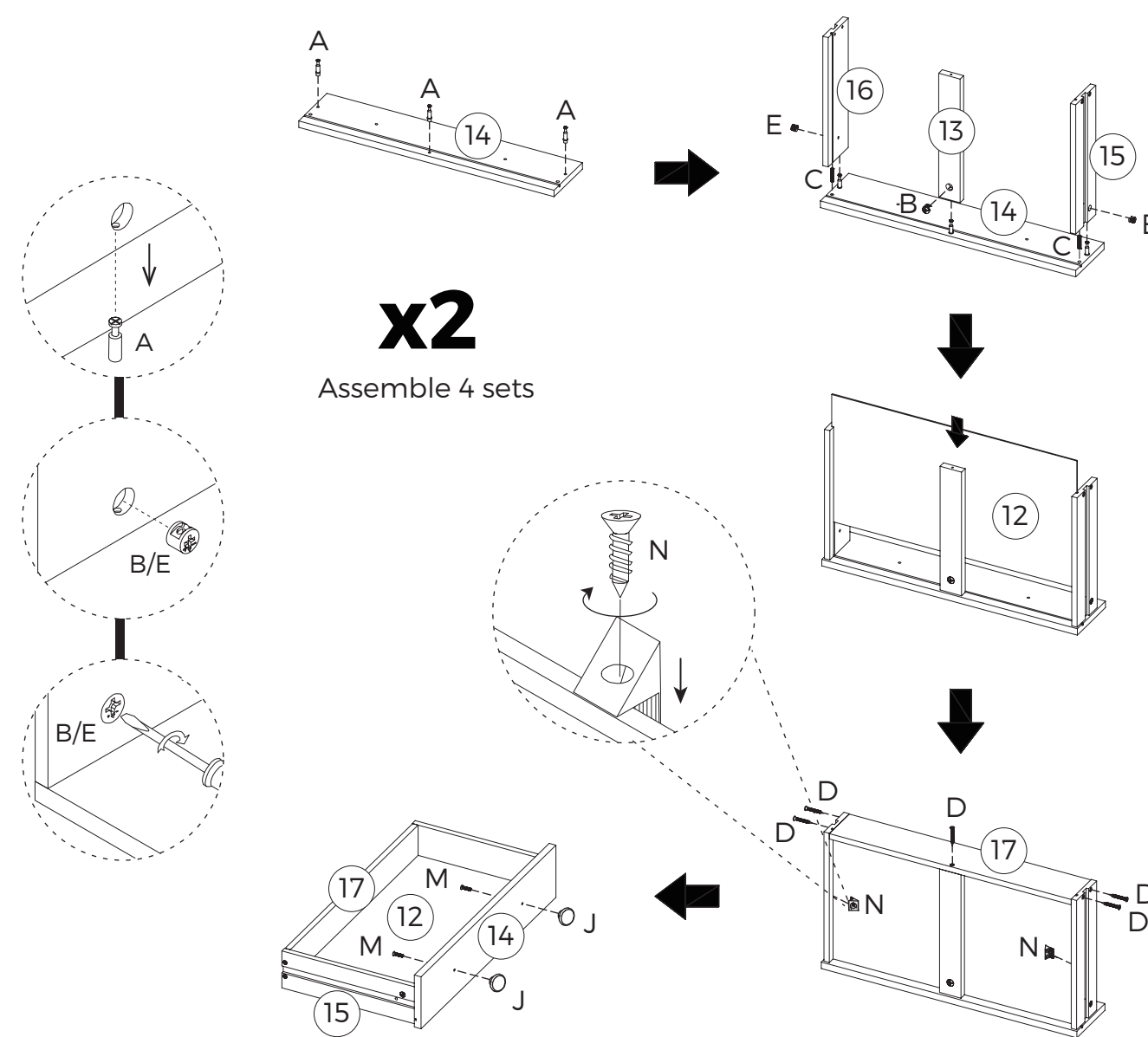
**Part D**  
10pcs  
M4x40mm



**Part A**  
6pcs  
7x35mm



**Part C**  
4pcs  
Ø6x30mm



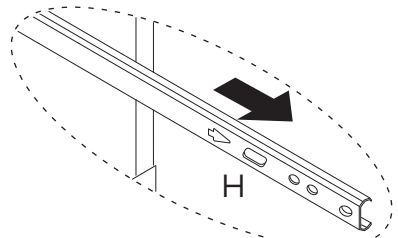


STEP 15

**Part G**  
15pcs  
M4x11mm

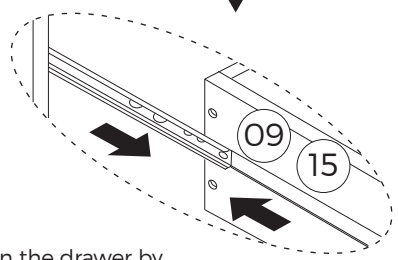


Screw from the inside of the drawers



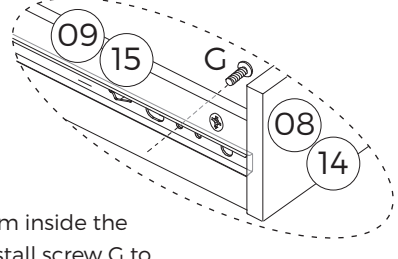
Firstly, pull out the runners H on both sides of the unit to extend about 10cm to 15cm out.

Left runner shown

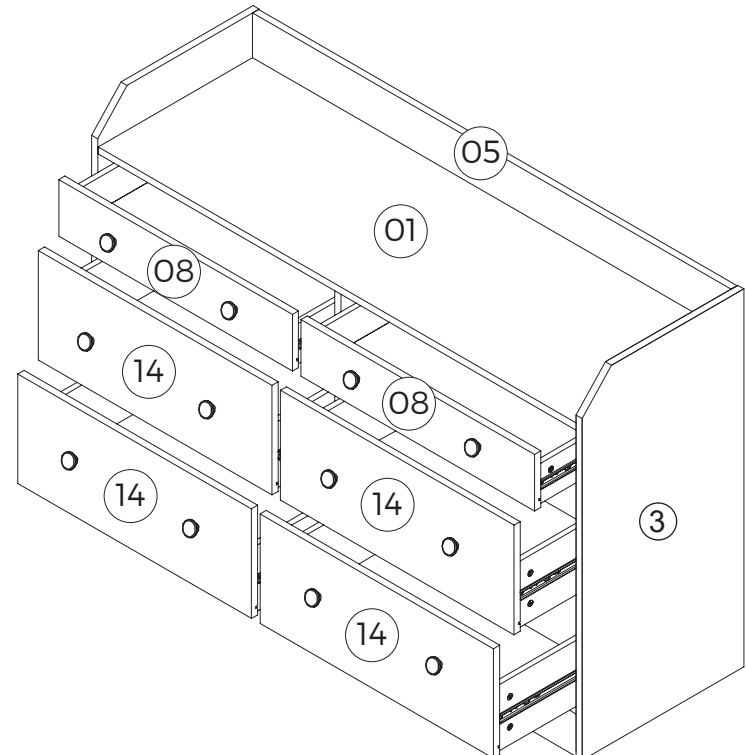


Next, slot in the drawer by ensuring that the runners H sit smoothly within the drawer grooves.

Right runner shown



Finally, from inside the drawer, install screw G to thread through the indicated hole on runner H.



STEP 16

**Part K**  
2pcs  
M4x30mm

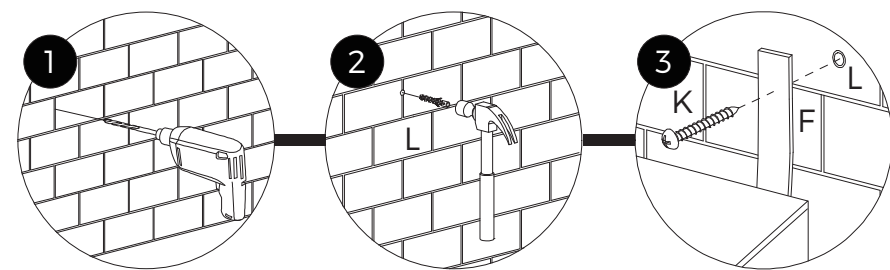


**Part L**  
2pcs

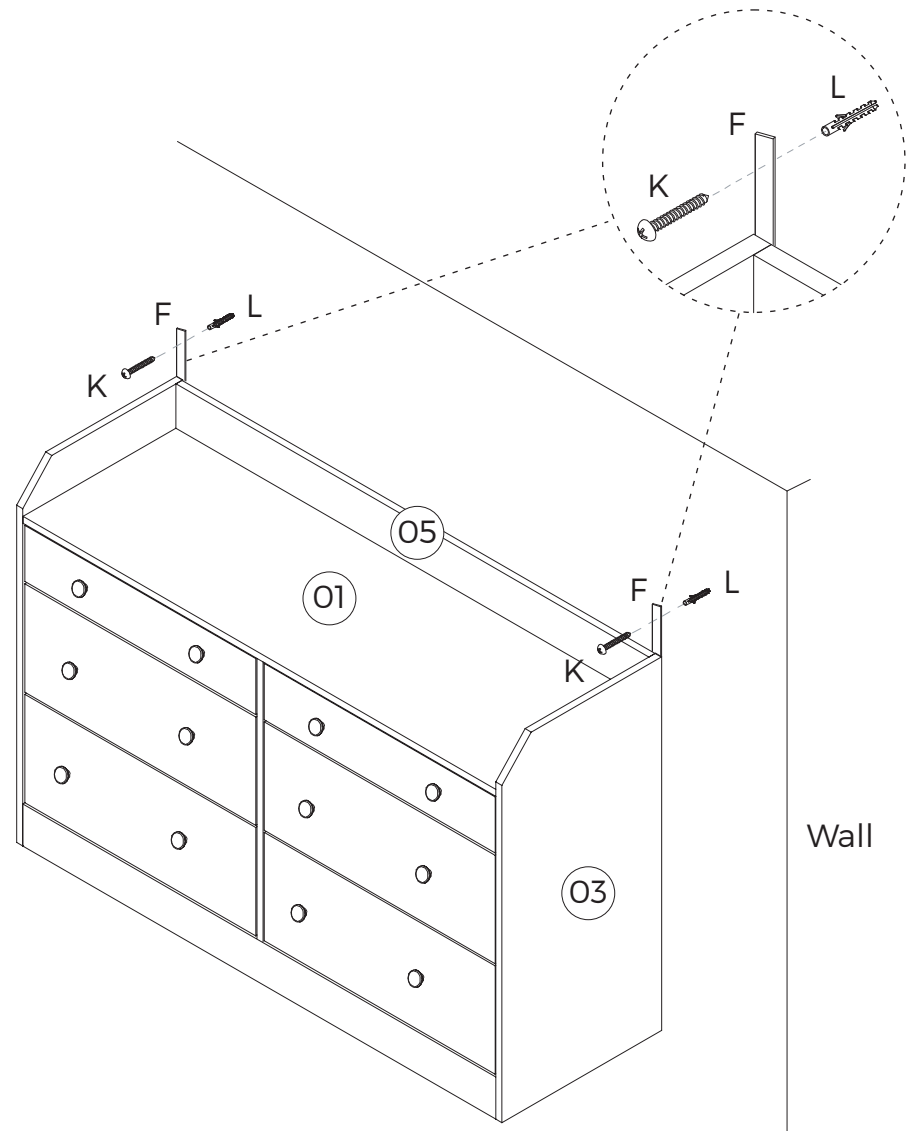


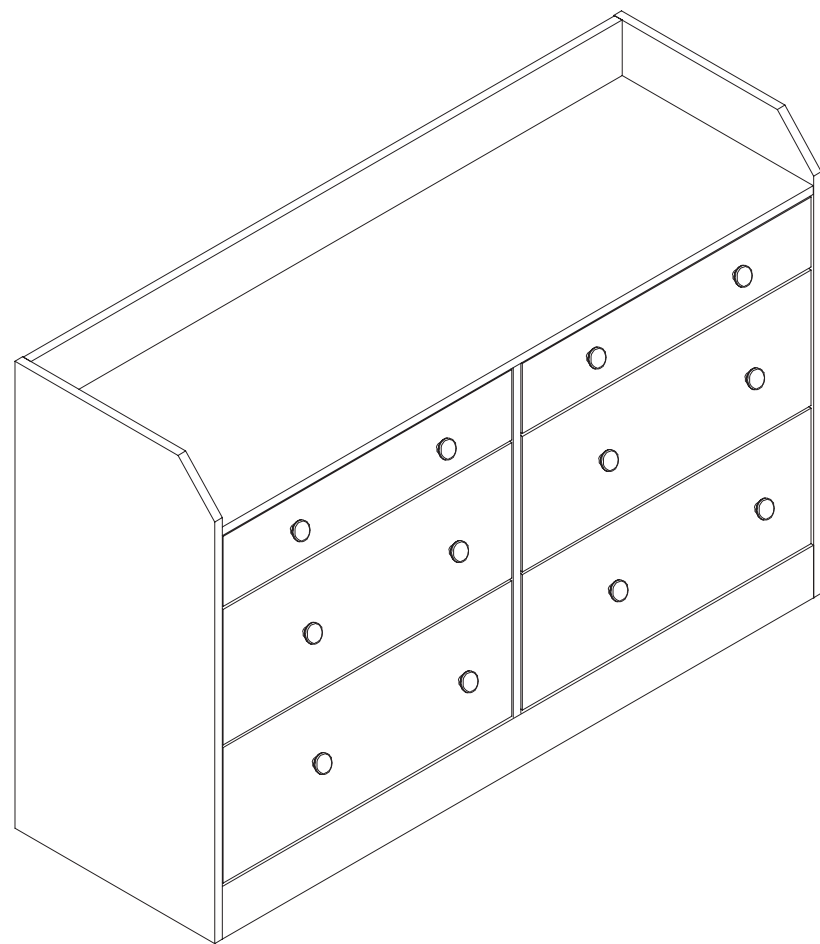
**OPTIONAL •**

Do this step only if you wish to secure the product to a wall. It is highly recommended that you do so for safety reasons.



Pre-drill holes in the wall.





⚠ WARNING	
<p><b>Children have died from furniture tipover.</b></p> <ul style="list-style-type: none"> <li>• ALWAYS secure it with an anchor device.</li> <li>• NEVER allow children to stand, climb or hang on drawers, doors, or shelves.</li> <li>• NEVER open more than one drawer at a time.</li> <li>• Place heavy items down low.</li> </ul>	
<p><b>NEVER put a TV on this furniture</b></p>	