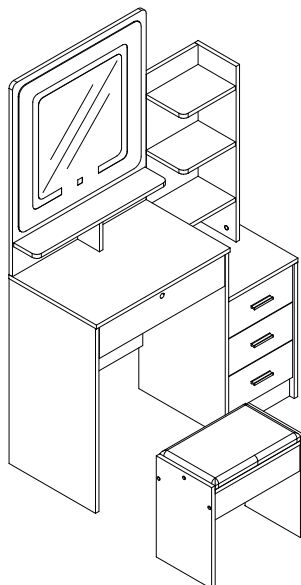




MODEL:DT-ST-B16

VERSION: 1.0

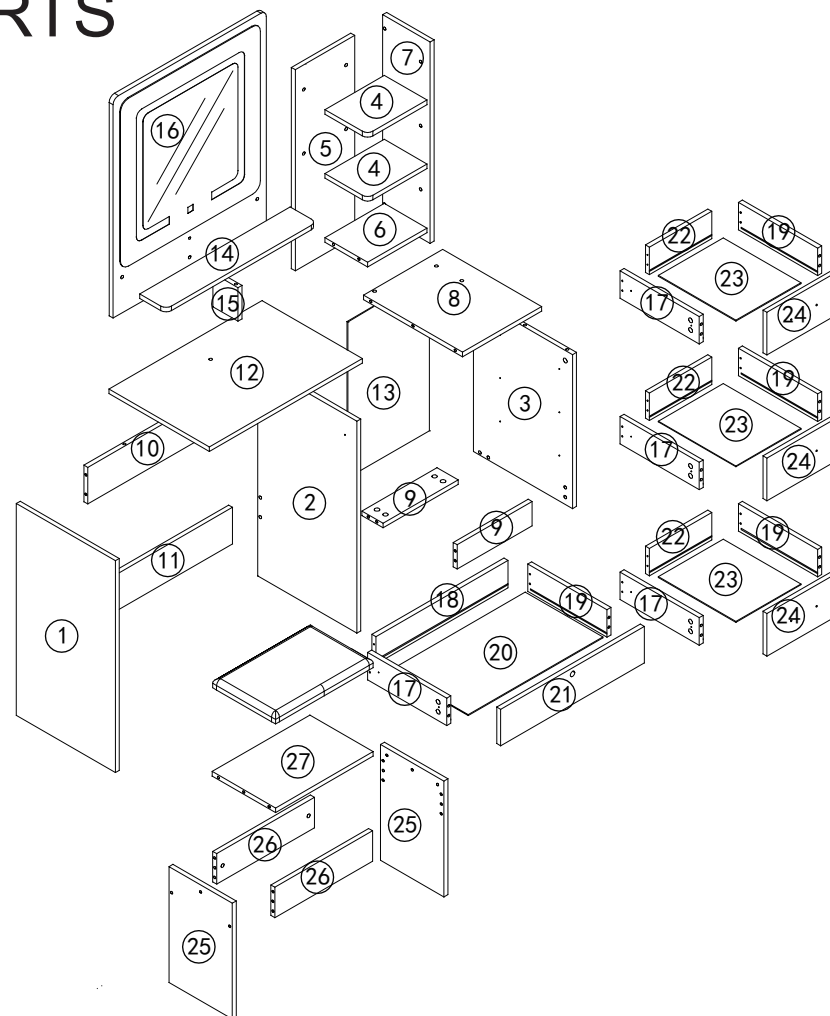


ASSEMBLY INSTRUCTIONS

HARDWARE

A 64 pcs	B 19 pcs 40x8	D 40 pcs 14x3.5mm	E 16 pcs 35*3.5MM
F 10 pcs	H 30 pcs	K 1 pcs	M 1 pc

PARTS



COMPONENTS

C 4 sets	G 1 set 16*3.5MM	I 3 sets	J 6 sets	L 2 sets
------------------------	-----------------------------------	------------------------	------------------------	------------------------

ASSEMBLY CHECKLIST



Read through the instructions carefully before starting assembly.



Make sure that you have the required tools. Do not use power tools.



Identify and lay out all parts to familiarise yourself with them.



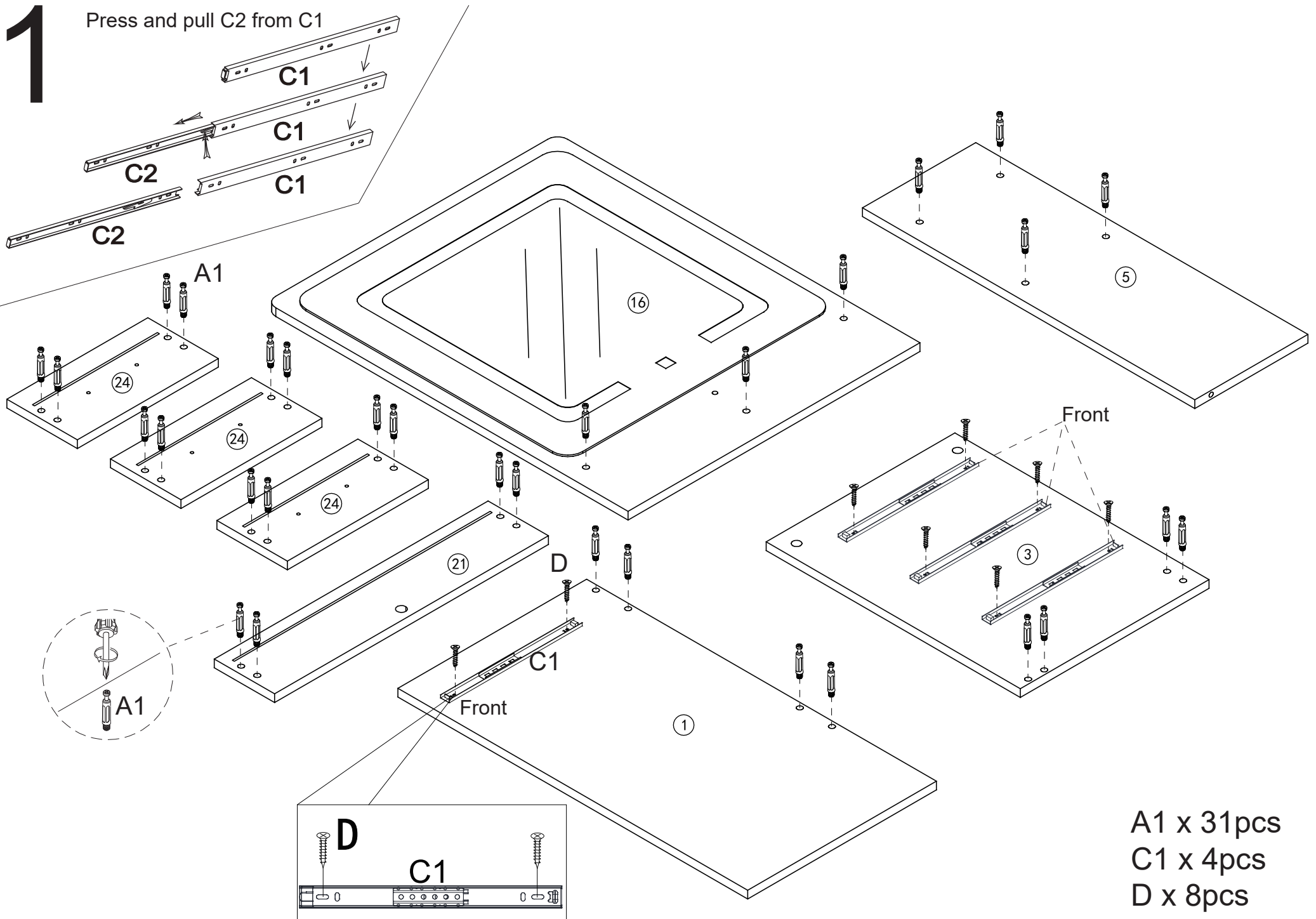
Do not fully tighten all screws until the step or process has been completed.

USEFUL INFORMATION

1. Never use power tools for assembly. They can damage the components or hardware if used incorrectly.
2. The most common mistakes made during assembly are using the wrong hardware or getting components from back to front.
3. Always assemble the product on a soft surface such as a carpet or cardboard to avoid scratching or damaging the surface of the product.

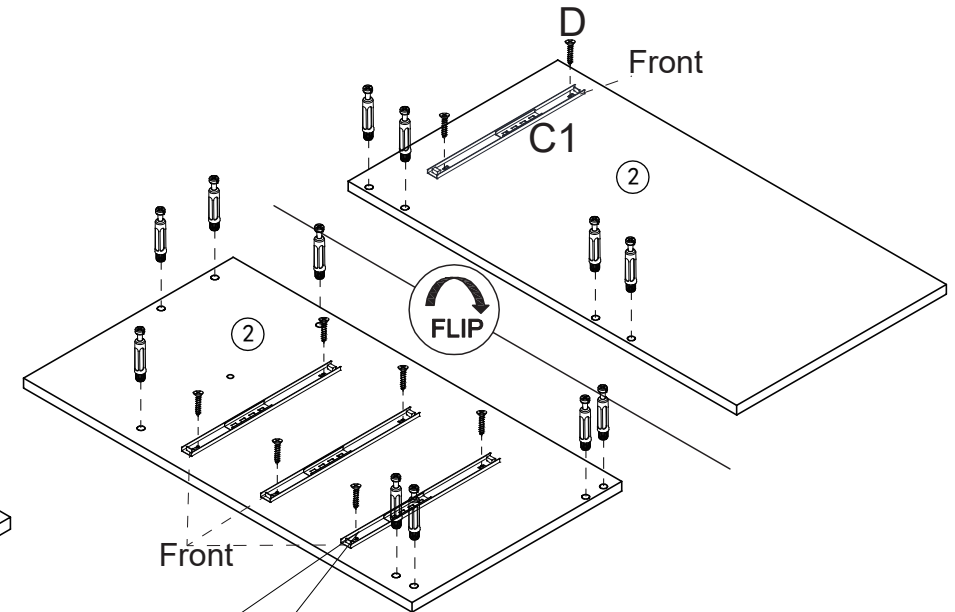
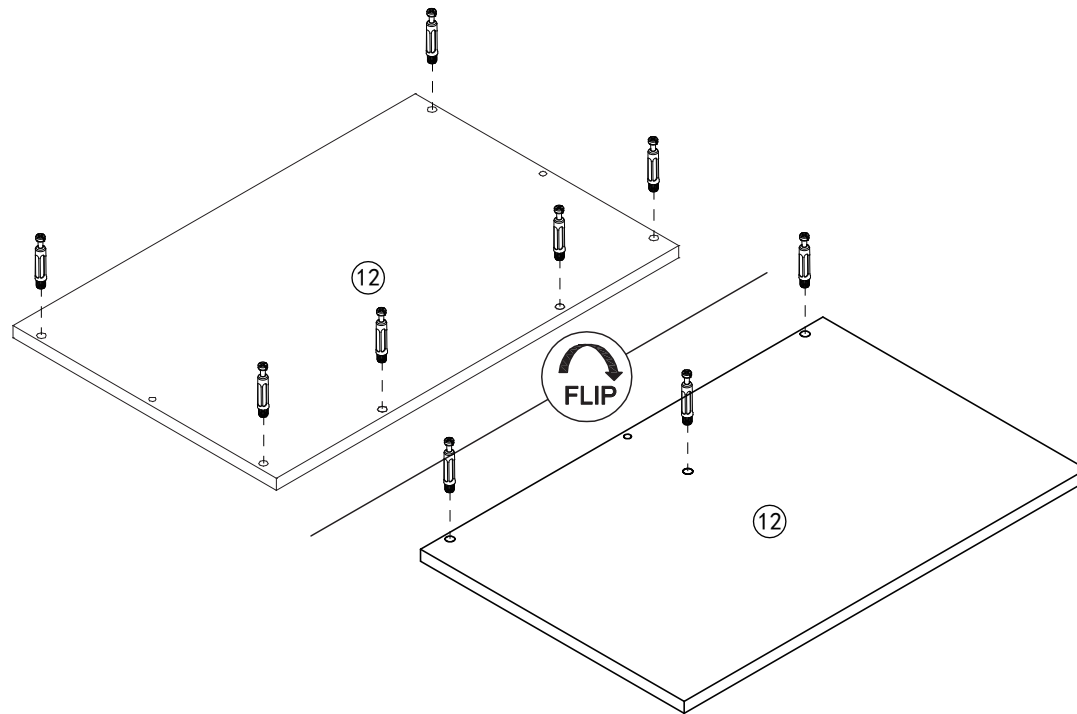
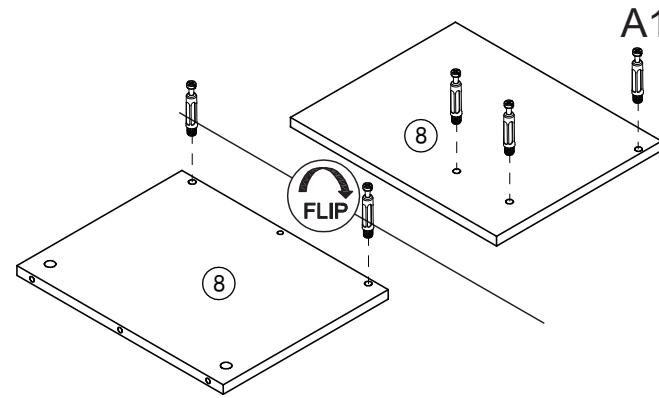
1

Press and pull C2 from C1



A1 x 31pcs
C1 x 4pcs
D x 8pcs

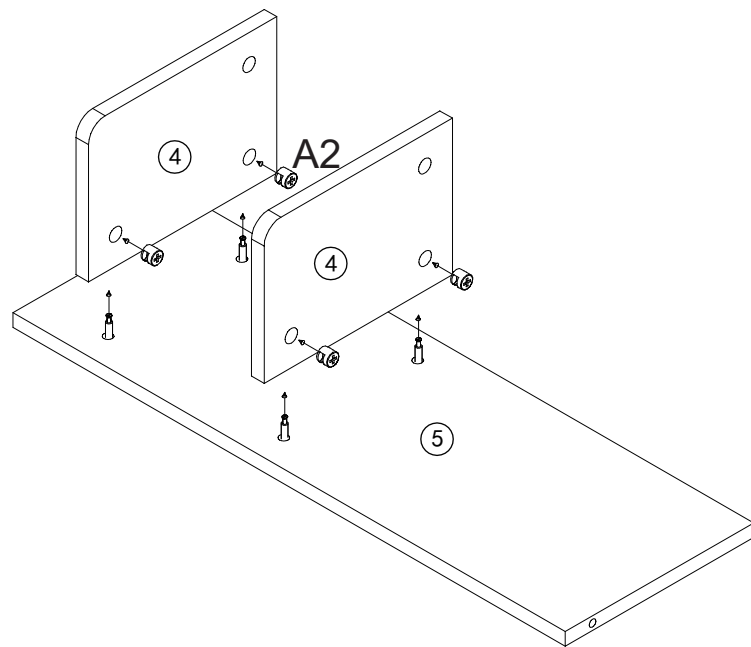
2



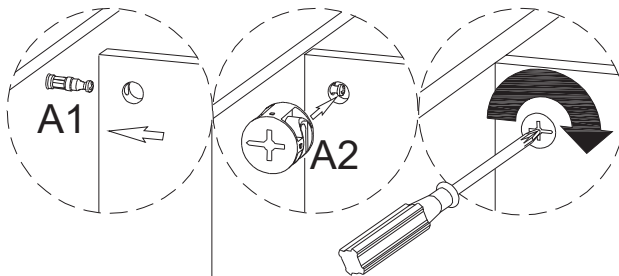
A1 x 24pcs
C1 x 4pcs
D x 8pcs

3

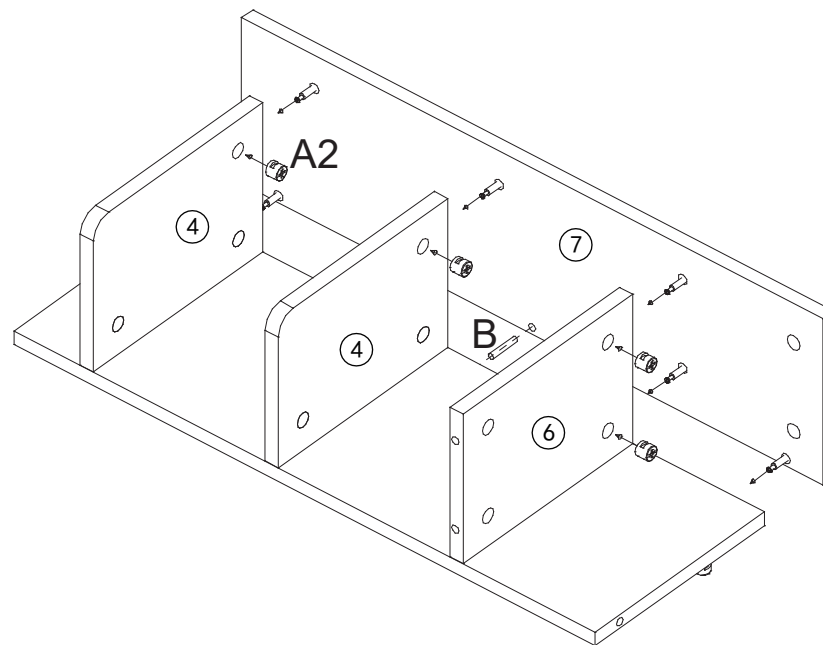
3-1



A2 x 4pcs



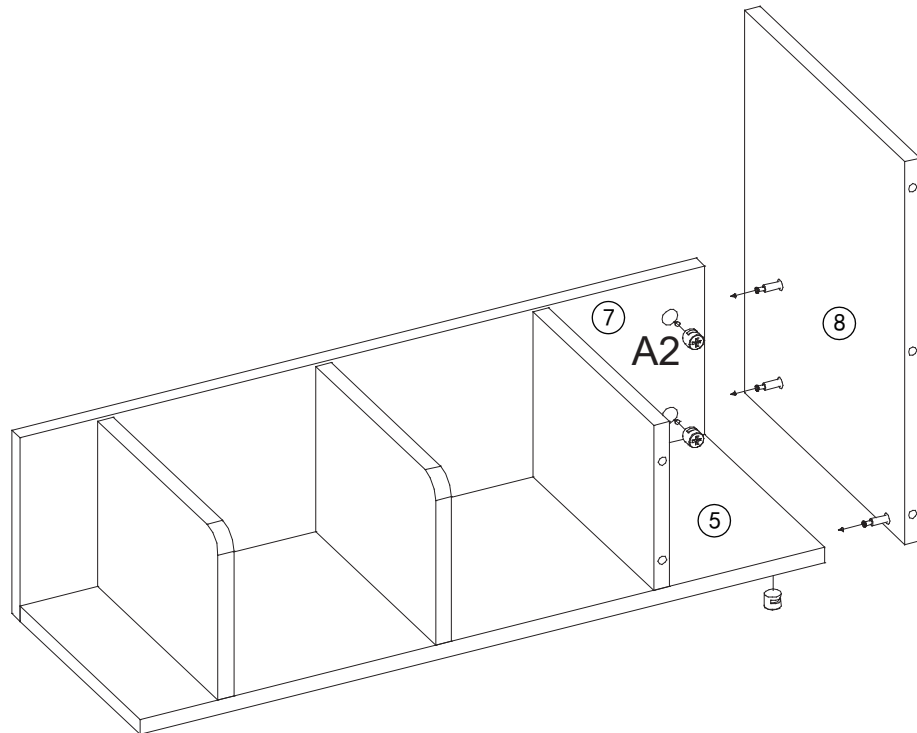
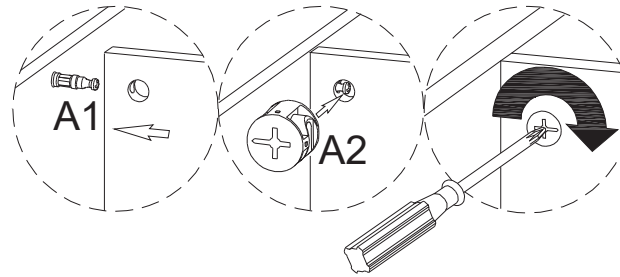
3-2



A2 x 6pcs

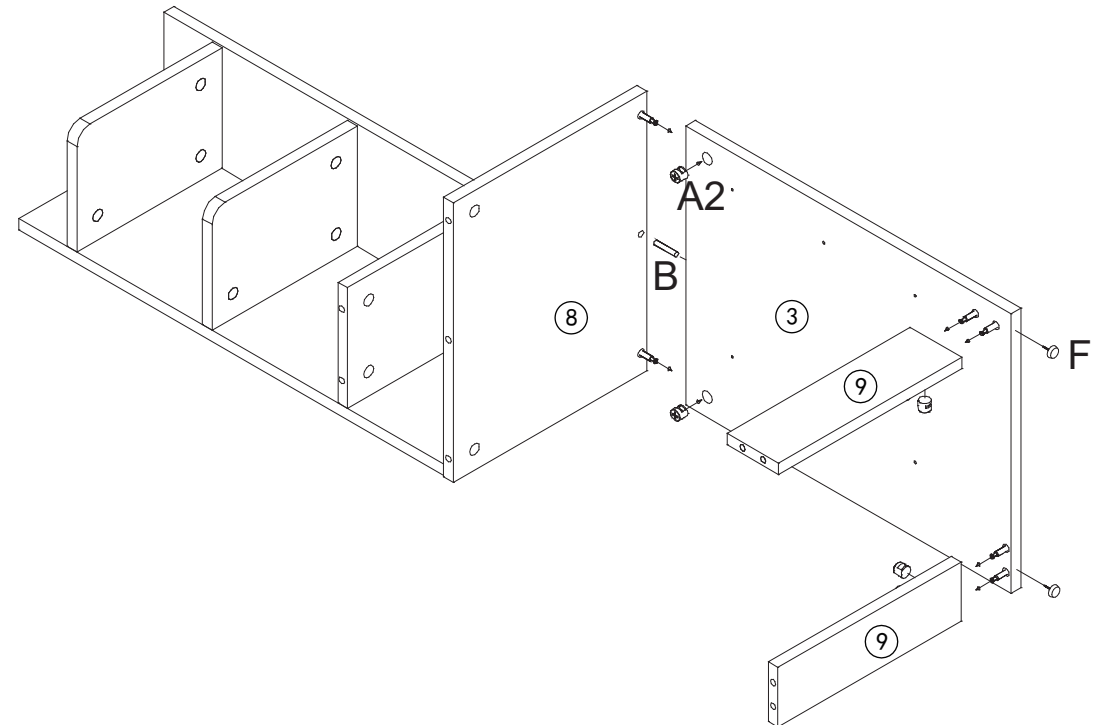
4

4-1



A2 x 3pcs

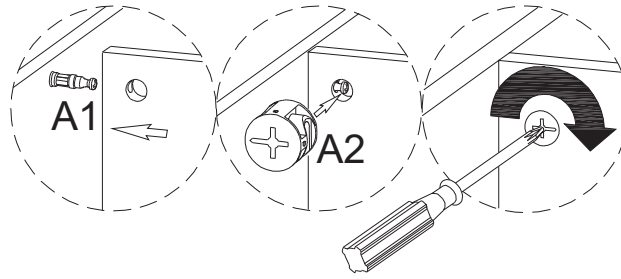
4-2



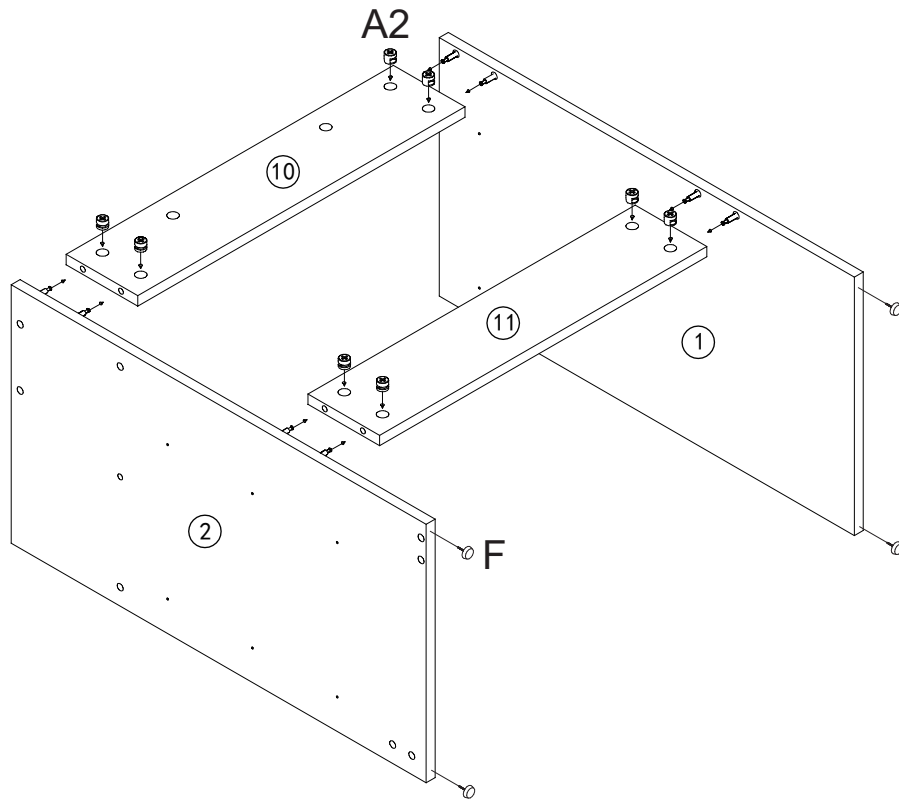
A2 x 6pcs
B x 1pcs

5

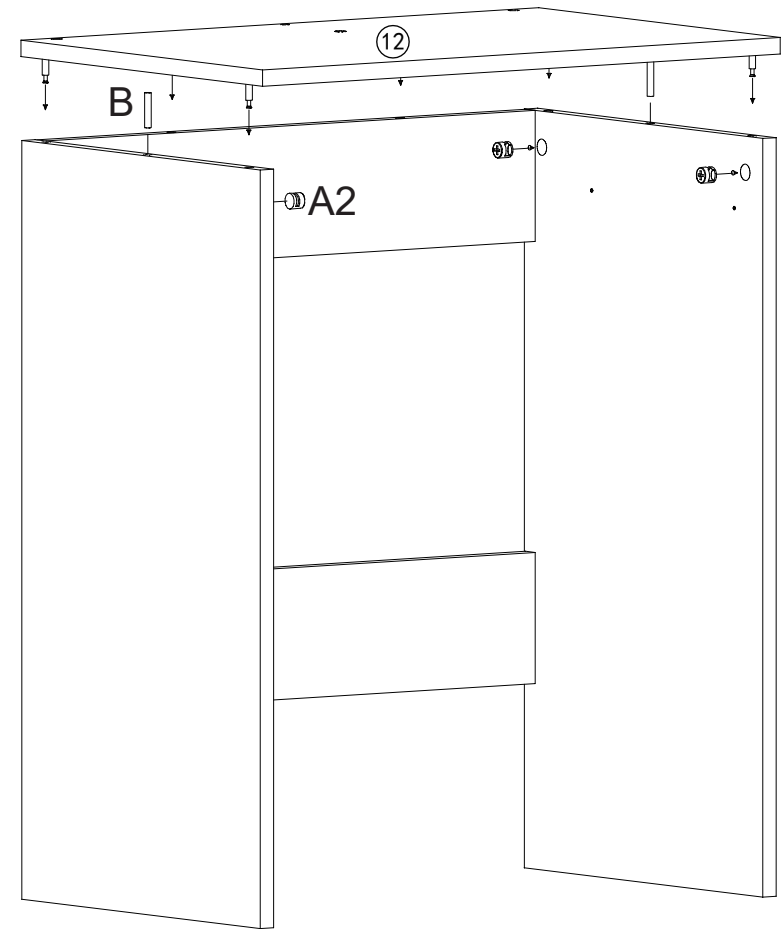
5-1



5-2



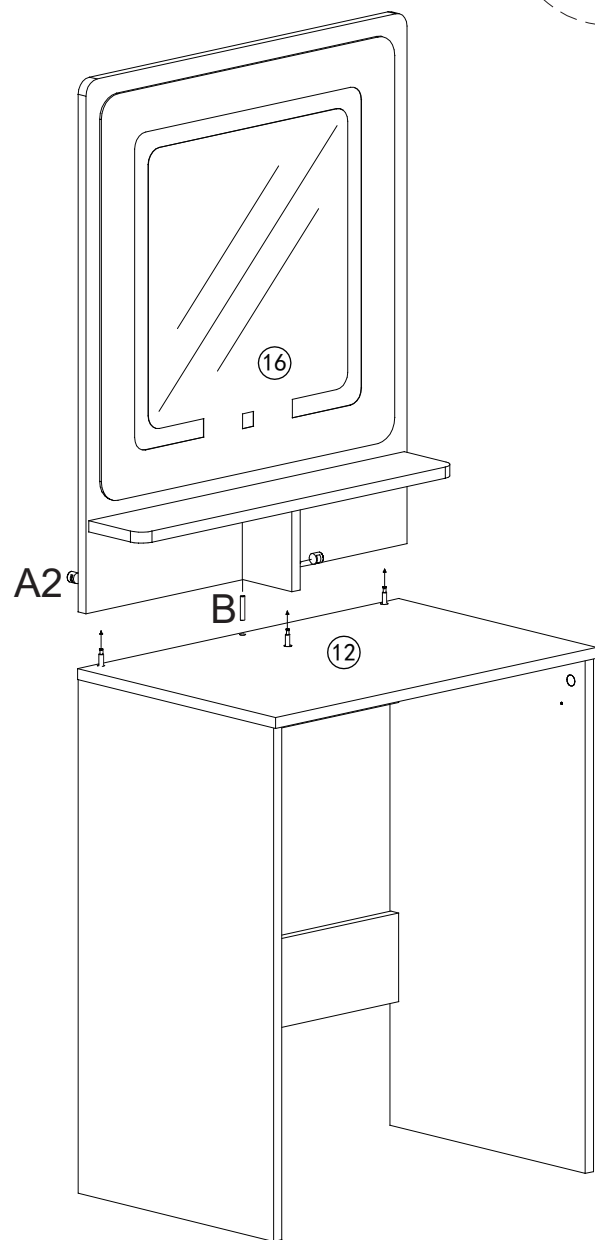
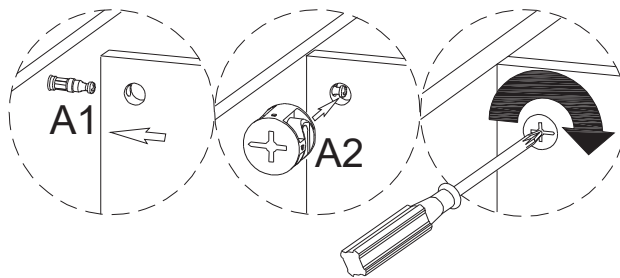
A2 x 8pcs
F x 4pcs



A2 x 6pcs
B x 2pcs

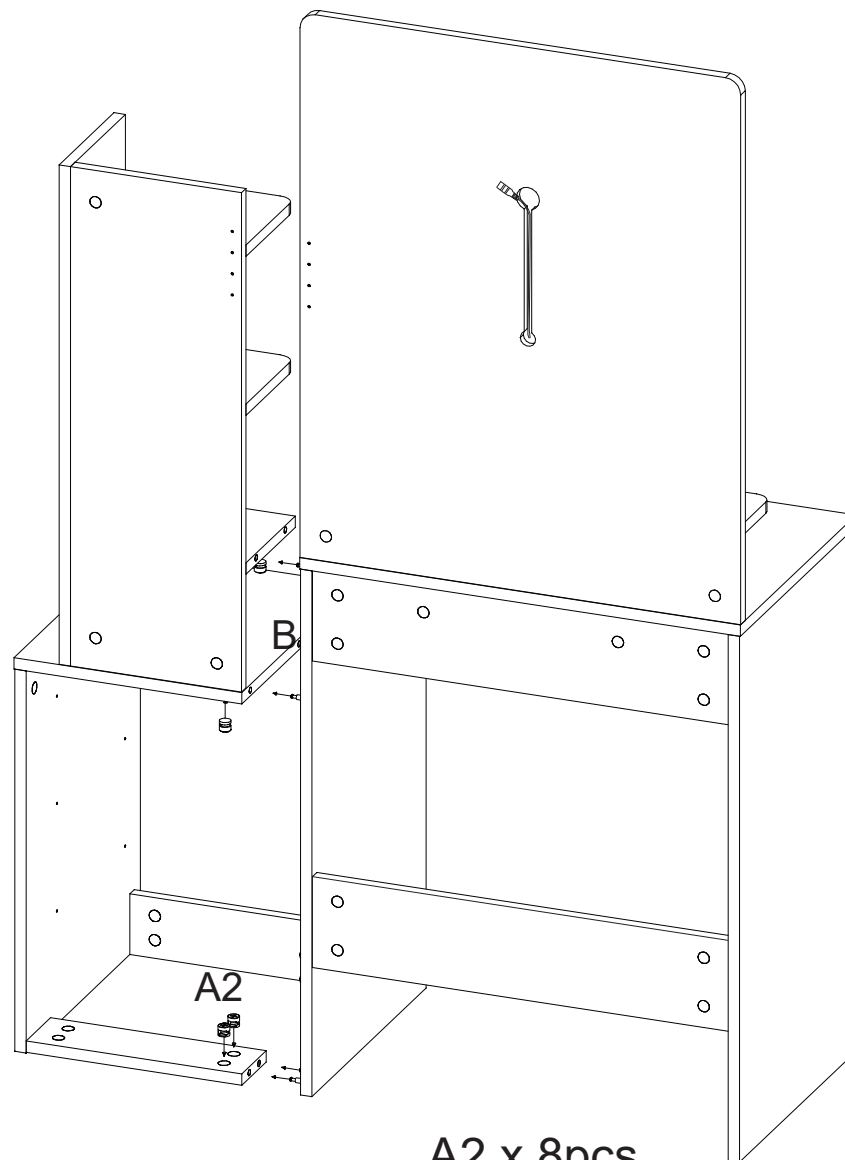
6

6-1



A2 x 3pcs
B x 1pcs

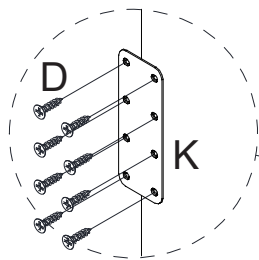
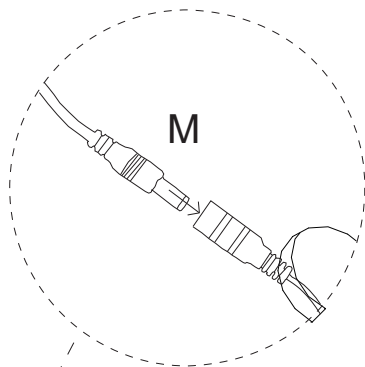
6-2



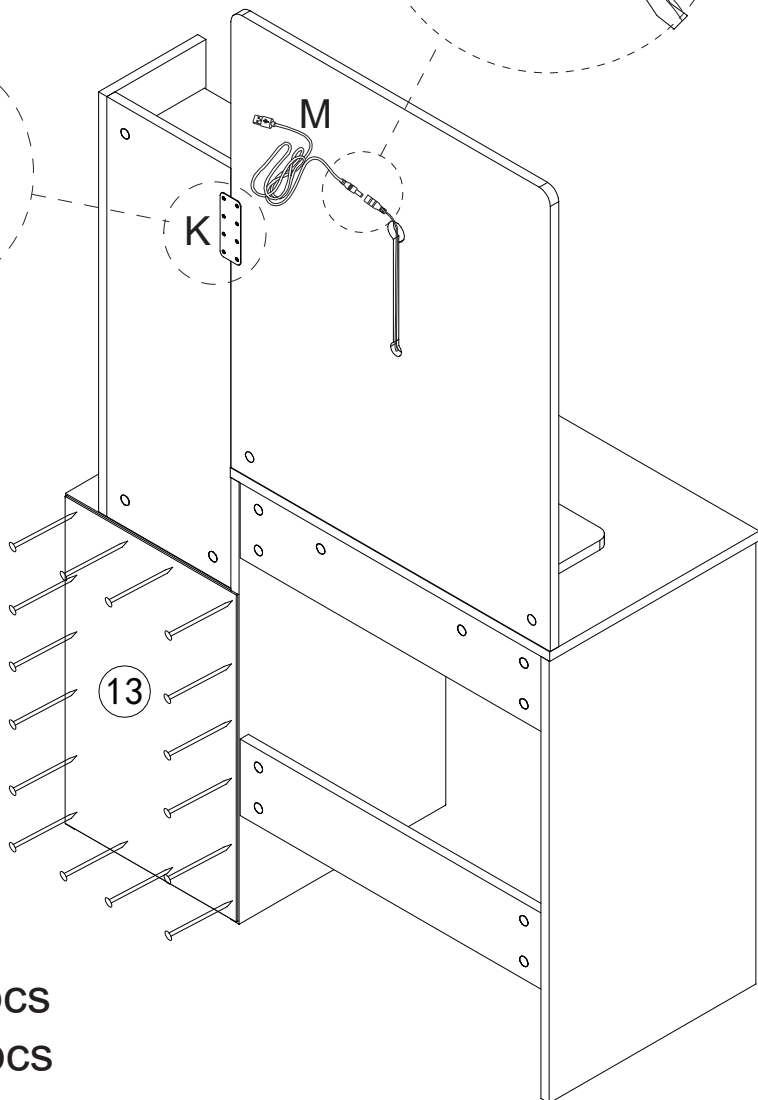
A2 x 8pcs
B x 1pcs

7

7-1

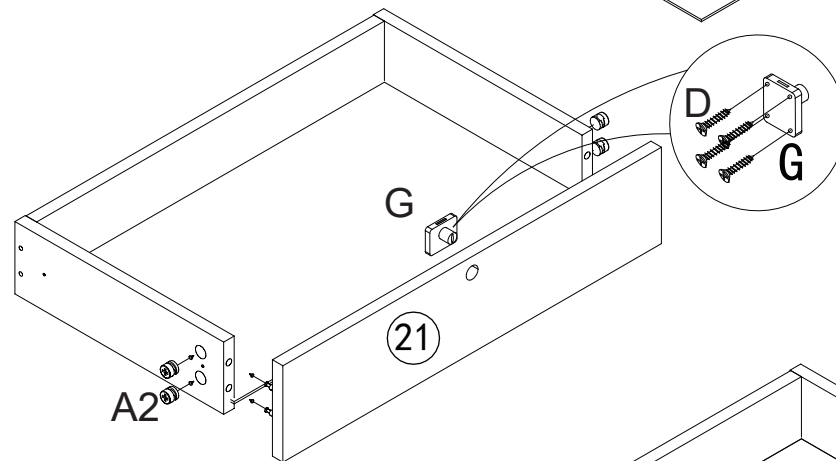
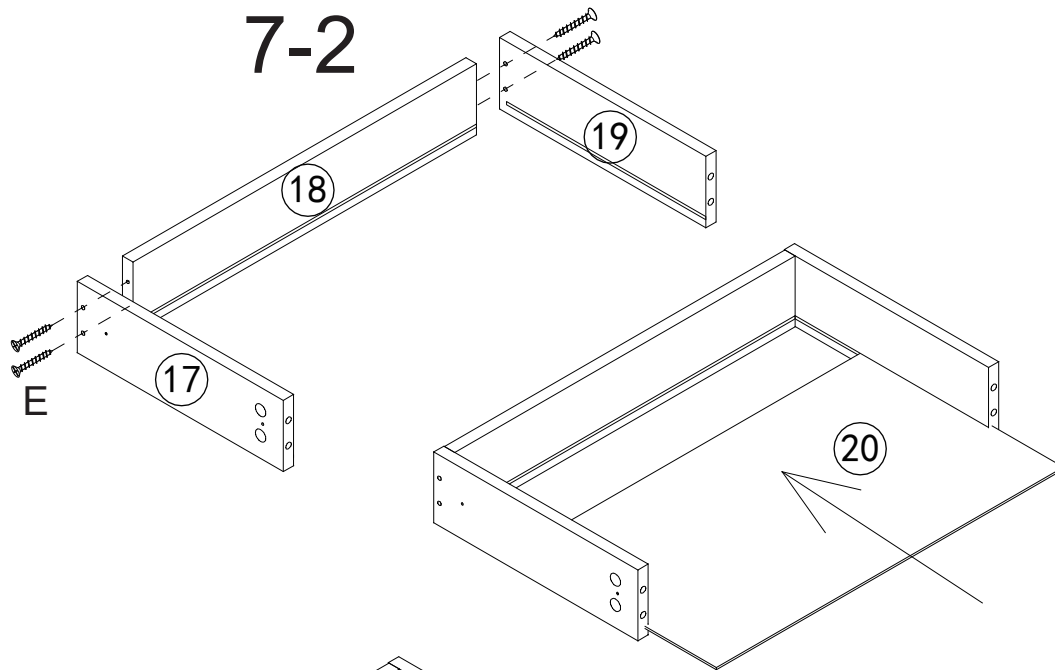


H

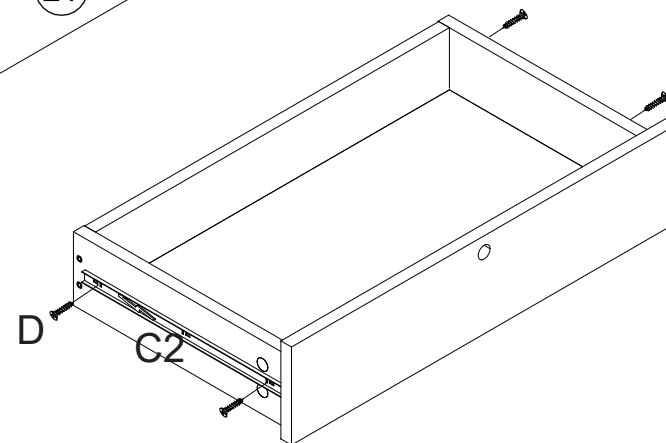


K x 1pcs
D x 8pcs
M x 1pc

7-2

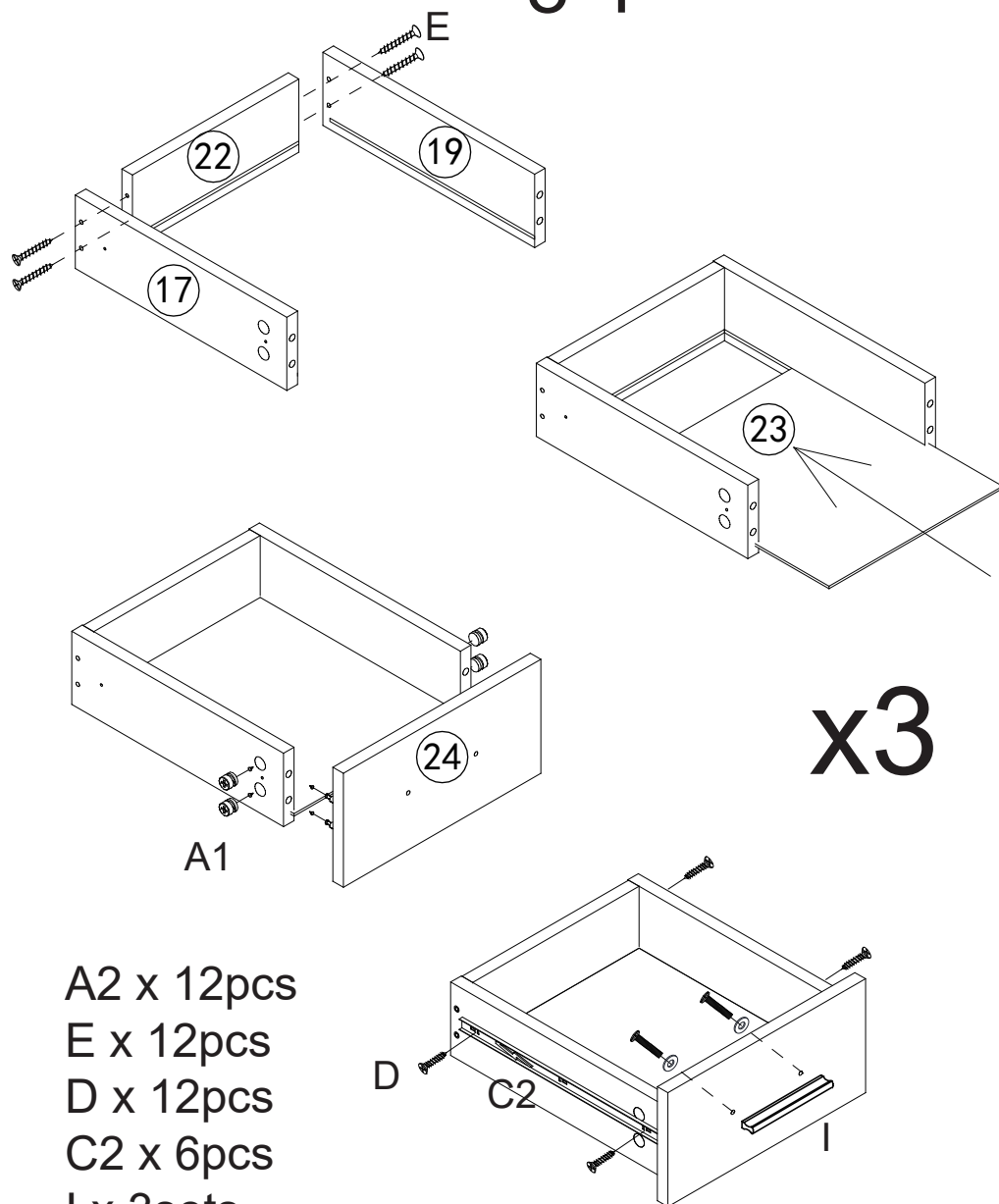


A2 x 4pcs
E x 4pcs
D x 8pcs
C2 x 2pcs
G x 1set

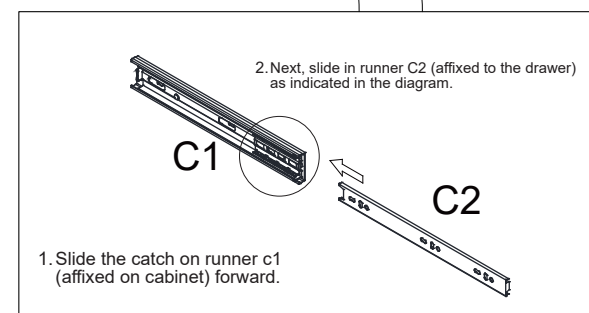
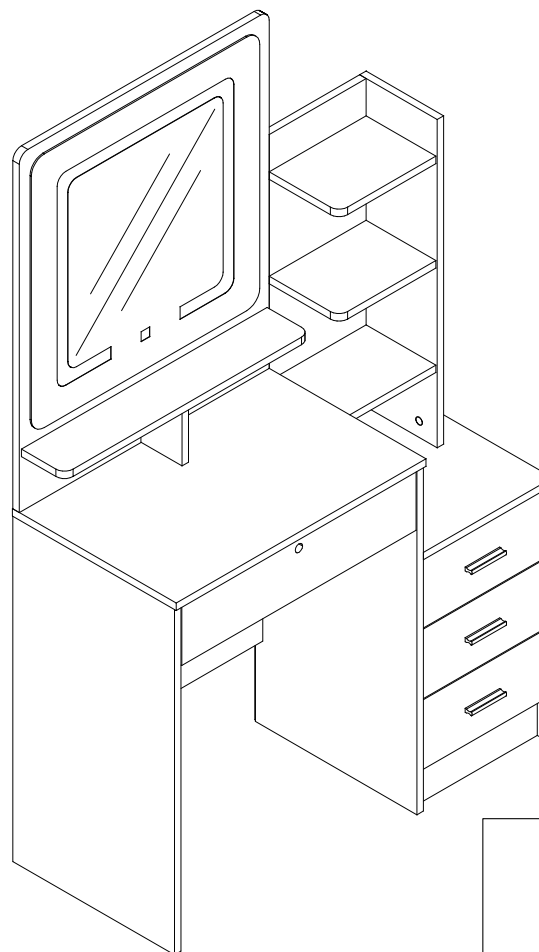


8

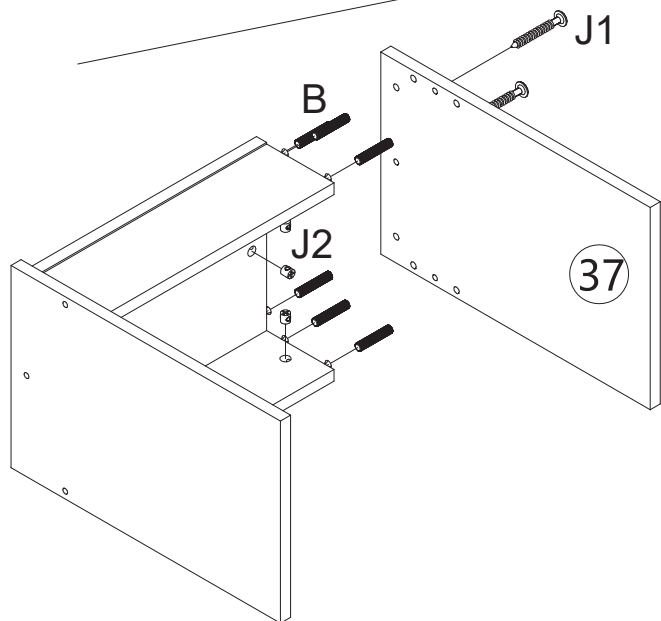
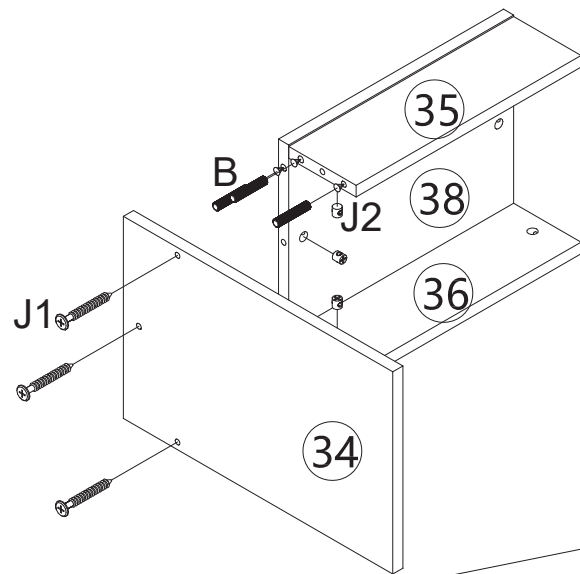
8-1



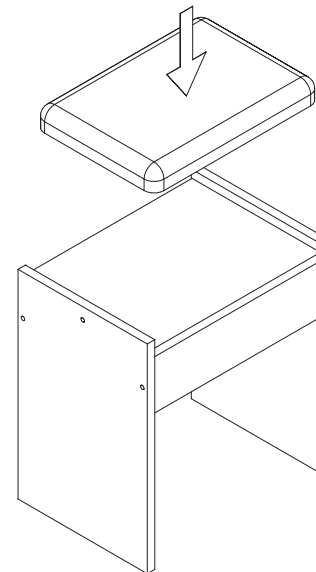
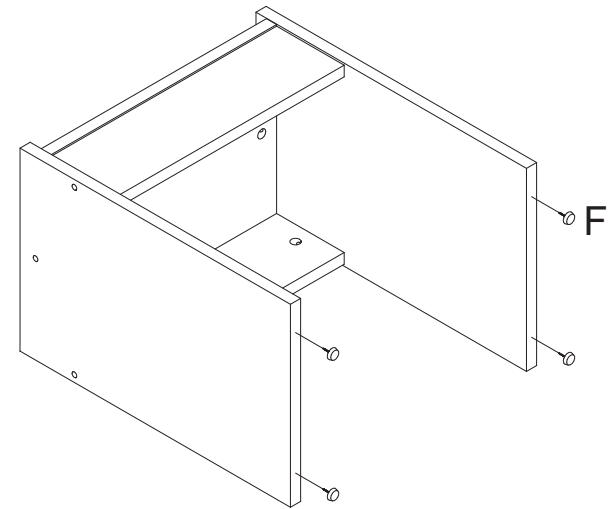
8-2



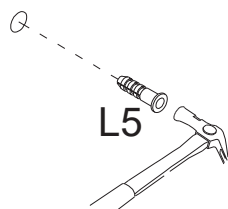
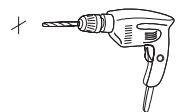
9



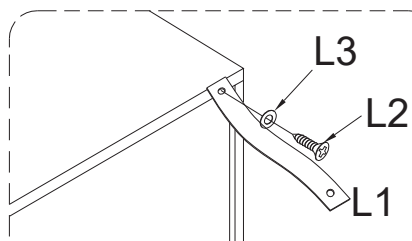
J x 6sets
B x 12pcs



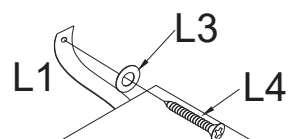
F x 4pcs



Pre-drilled hole in wall
Lightly tap K5 into hole



Attach K1 to back of bedside
table with K2 and K3



Secure K4 to wall
with K3 and K1

