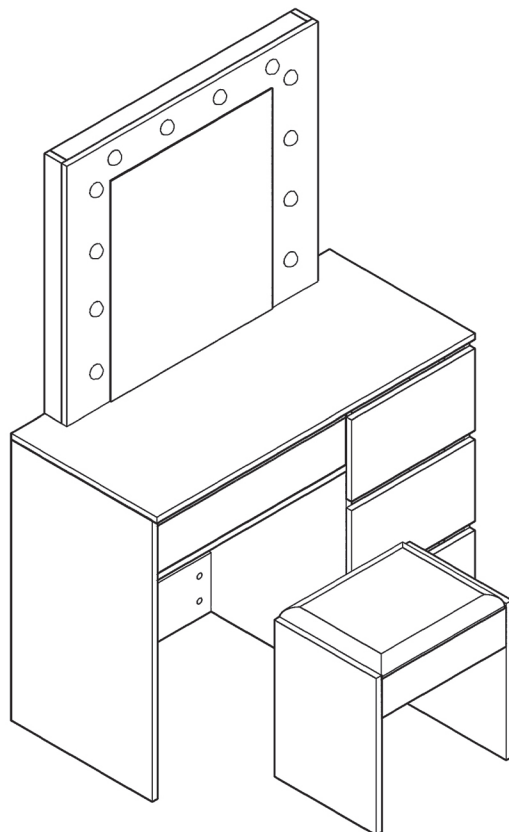




# DRESSING TABLE

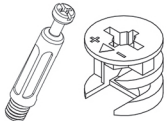
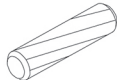
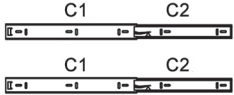


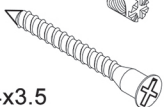

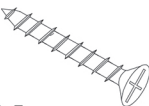

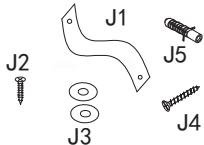




MODEL: DT-ST-B8



## ASSEMBLY INSTRUCTIONS

Please read these instructions carefully before assembling and using the product.

## HARDWARE

<b>A</b>  71pcs	<b>B</b>  20pcs
<b>C</b>  4pcs	<b>D</b>  10pcs
<b>E</b>  80pcs	<b>F</b>  6pcs 14x3.5
<b>G</b>  48pcs 14x3.5	<b>H</b>  16pcs 35x3.5
<b>I</b>  2pcs	<b>J</b>  2 sets
<b>K</b>  1 set	<b>K1</b>  <b>K2</b>  <b>K3</b> 

# ASSEMBLY CHECKLIST



Read through the instructions carefully before starting assembly.



Make sure that you have the required tools. Do not use power tools.



Identify and lay out all parts to familiarise yourself with them.

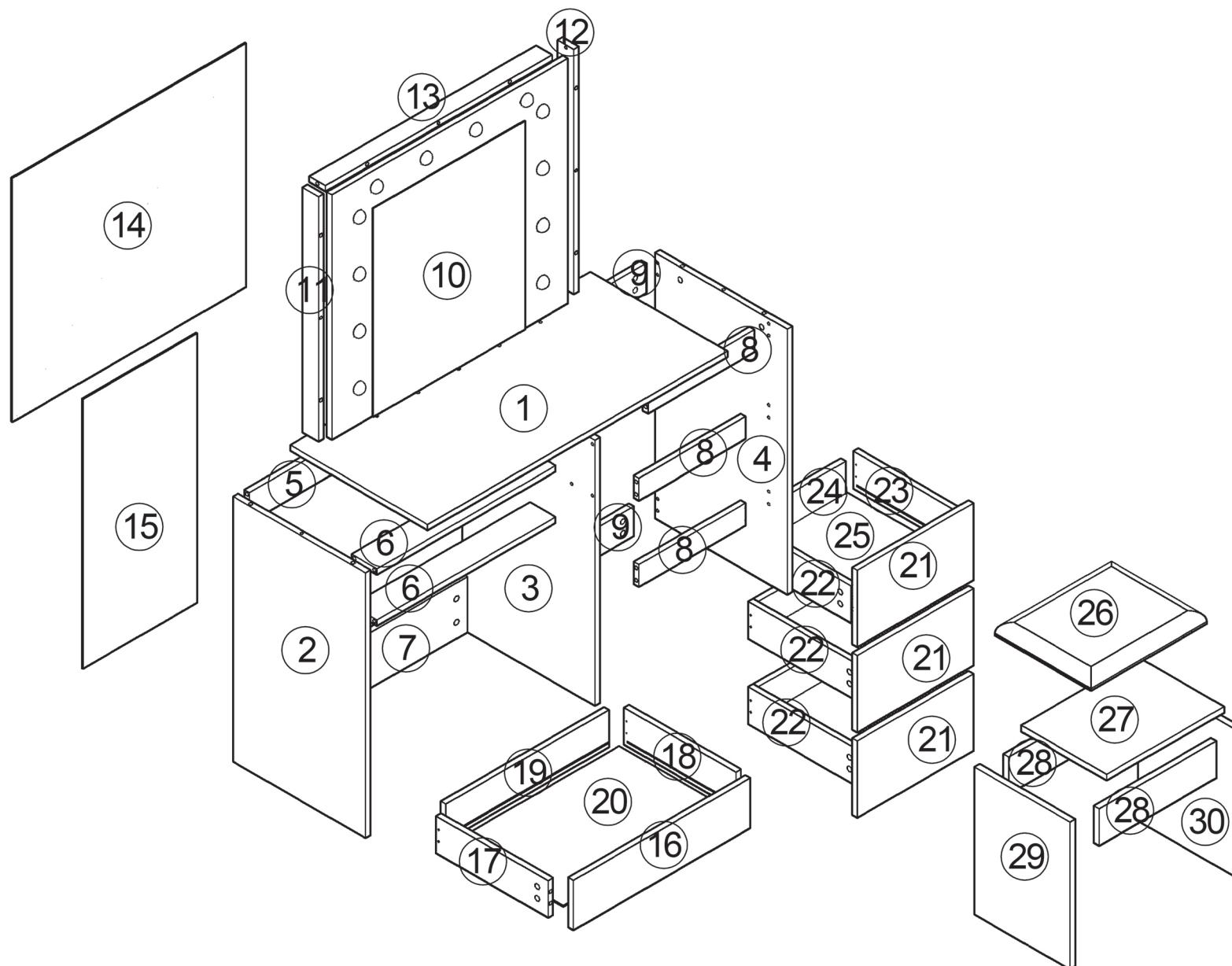


Do not fully tighten all screws until the step or process has been completed.

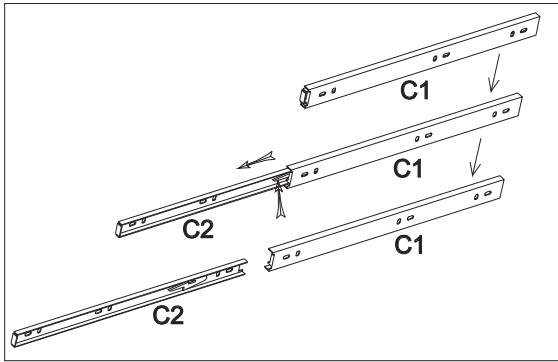
## USEFUL INFORMATION

1. Never use power tools for assembly. They can damage the components or hardware if used incorrectly.
2. The most common mistakes made during assembly are using the wrong hardware or getting components from back to front.
3. Always assemble the product on a soft surface such as a carpet or cardboard to avoid scratching or damaging the surface of the product.

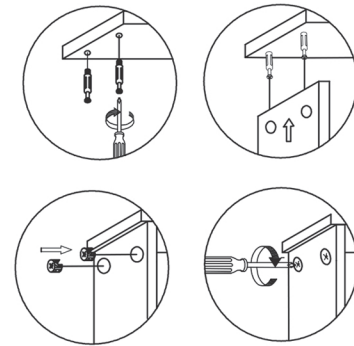
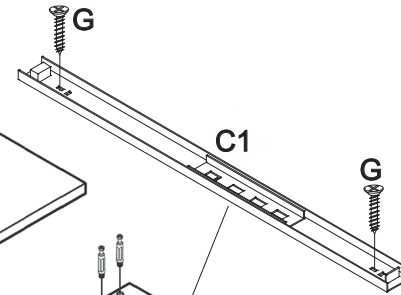
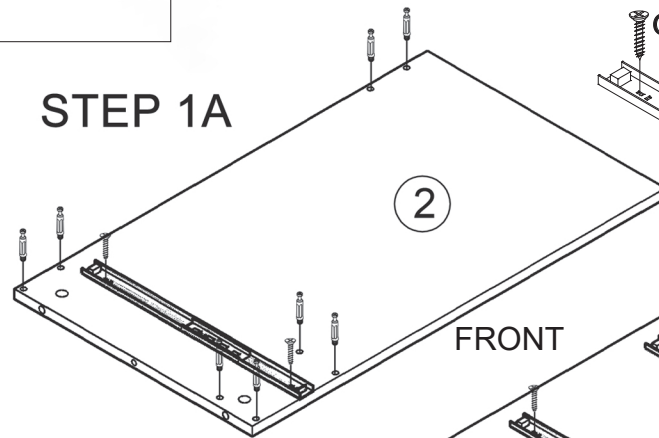
# PARTS



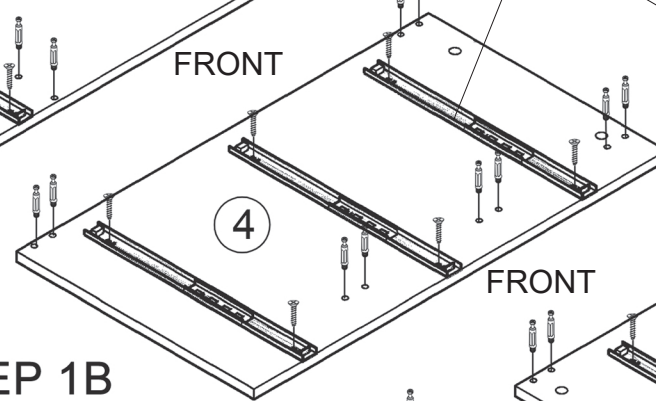
# ASSEMBLY STEPS



## STEP 1A

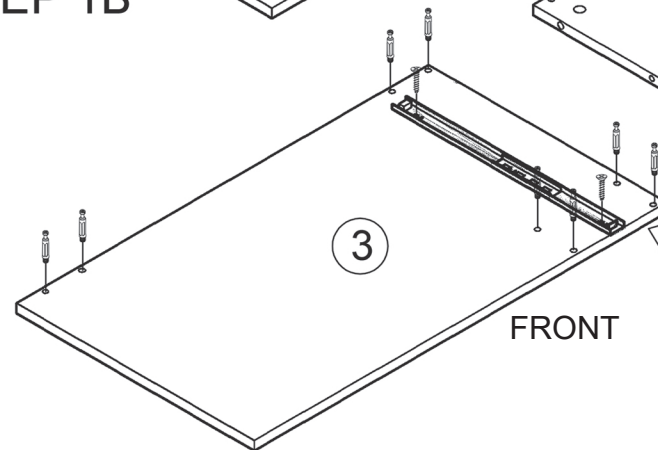


## STEP 1B



FRONT

## STEP 1C



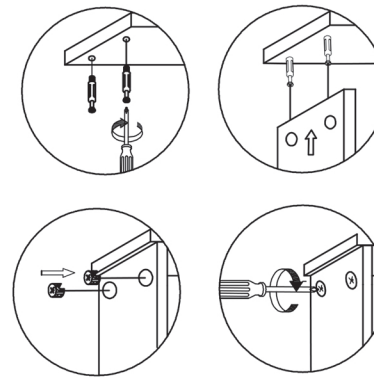
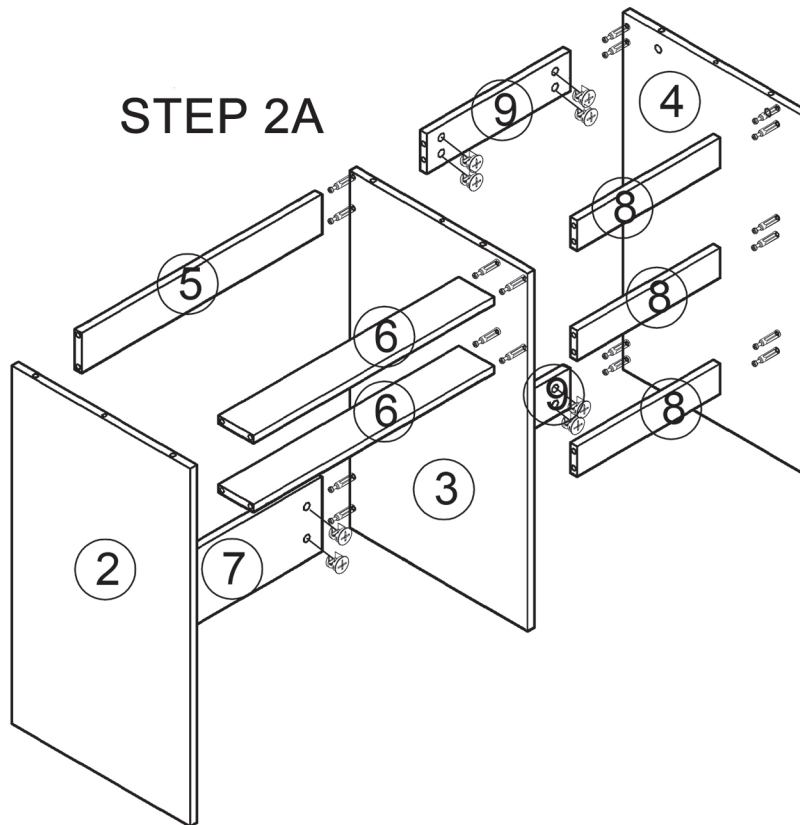
FRONT

HARDWARE  
A x36 C1 x4 G x16

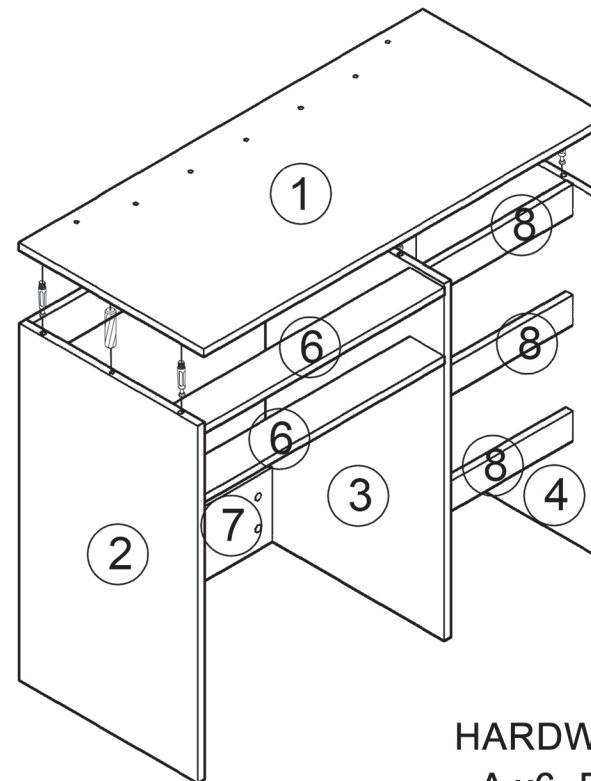


## ASSEMBLY STEPS

### STEP 2A



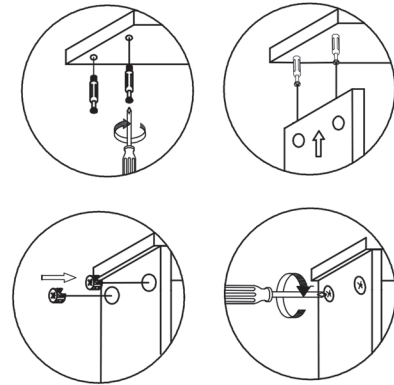
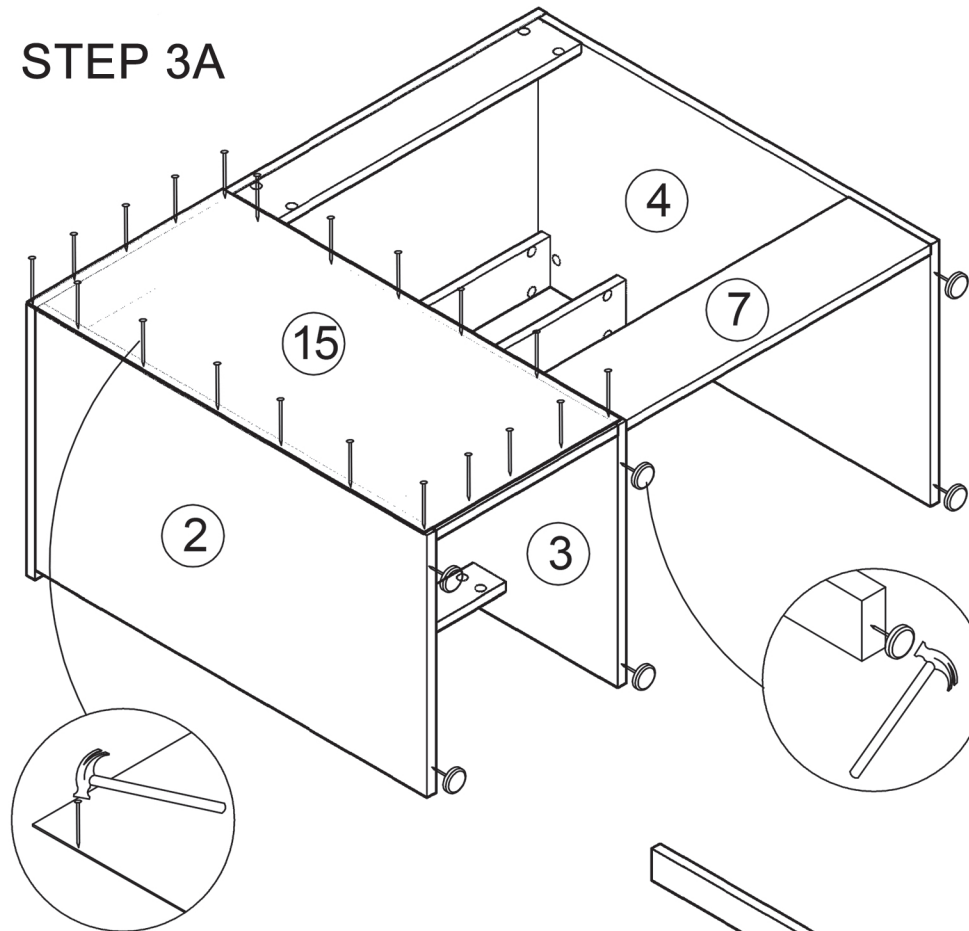
### STEP 2B



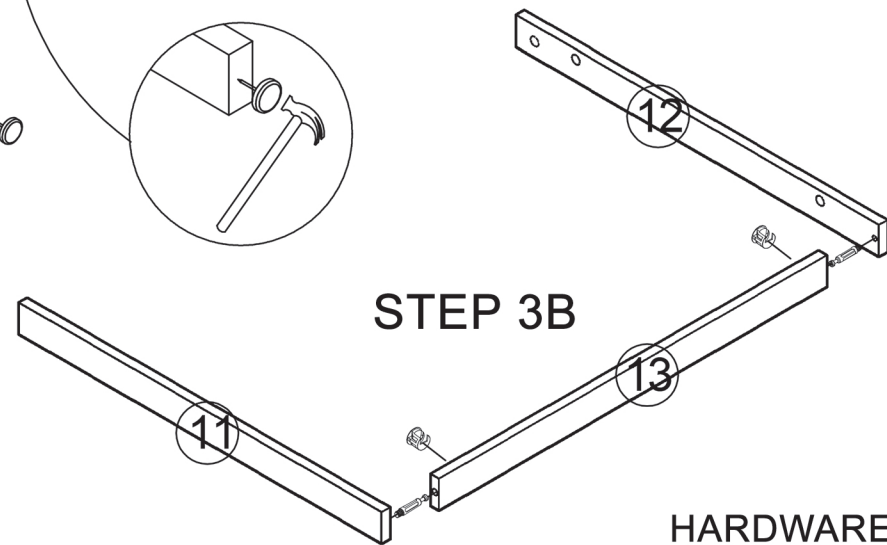
HARDWARE  
A x6 B x3

## ASSEMBLY STEPS

### STEP 3A



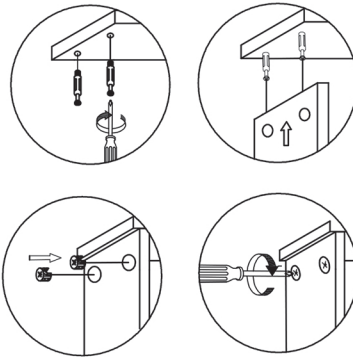
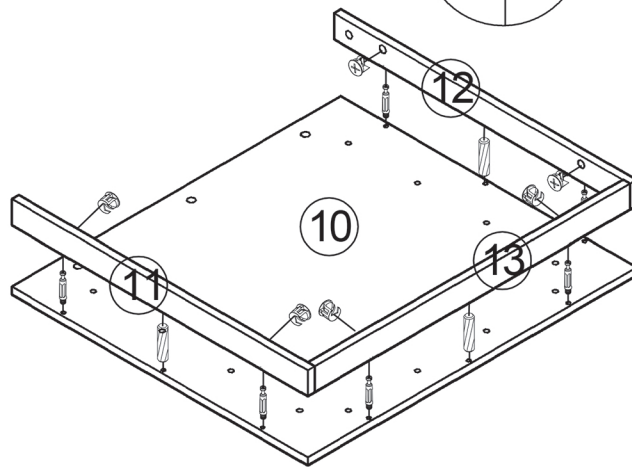
### STEP 3B



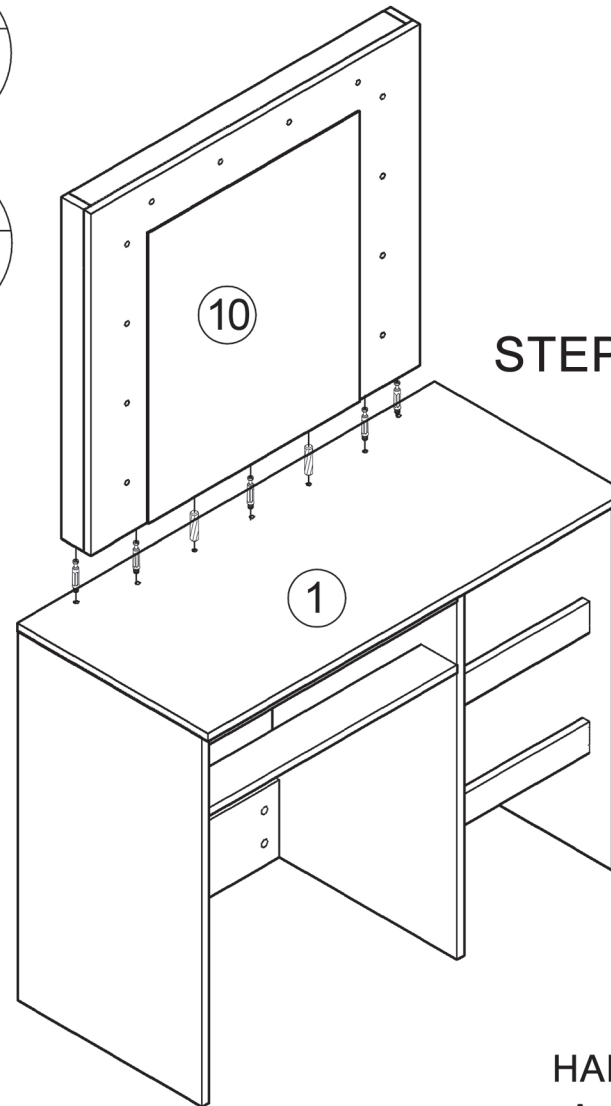
HARDWARE  
A x2 D x6 E x30

## ASSEMBLY STEPS

STEP 4A



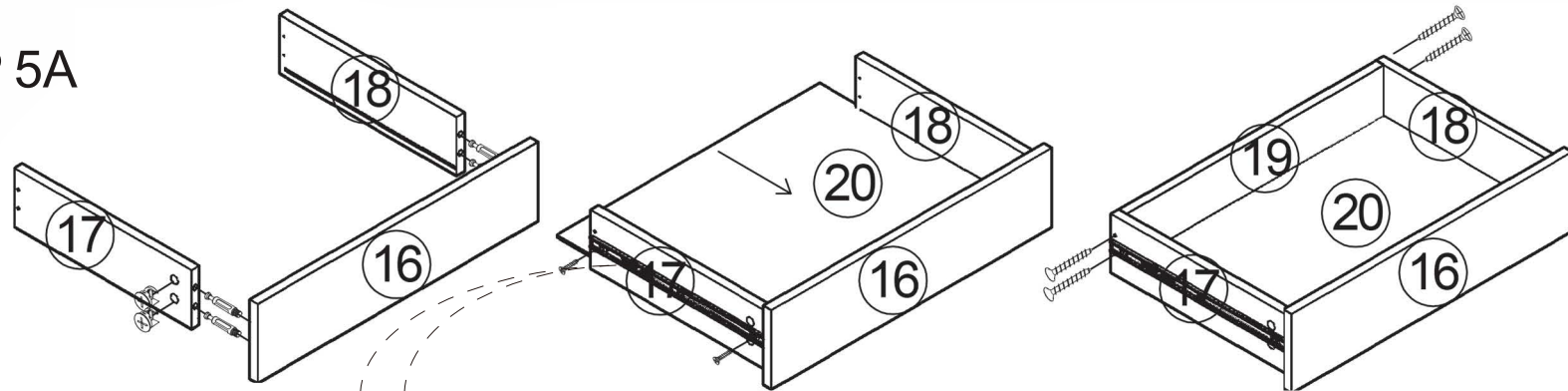
STEP 4B



HARDWARE  
A x11 B x5

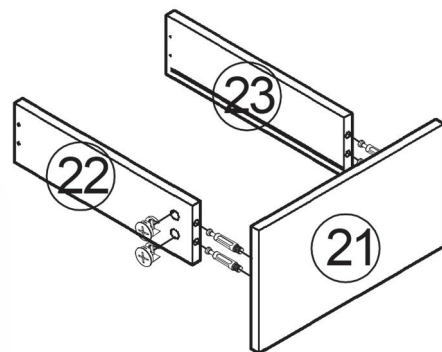
## ASSEMBLY STEPS

### STEP 5A

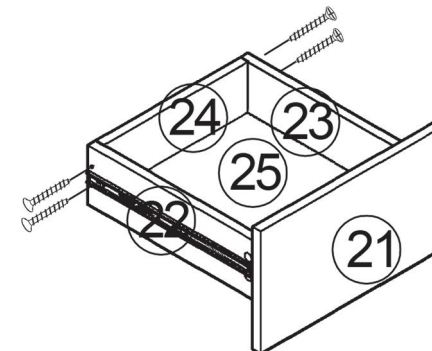
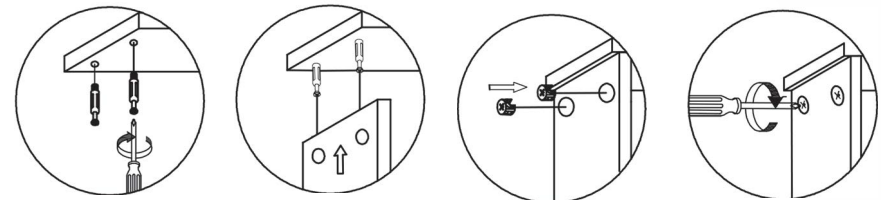
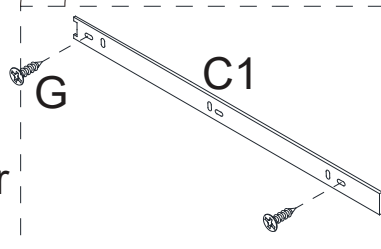


Assemble the large drawer

### STEP 58



Assemble the 3 side drawers

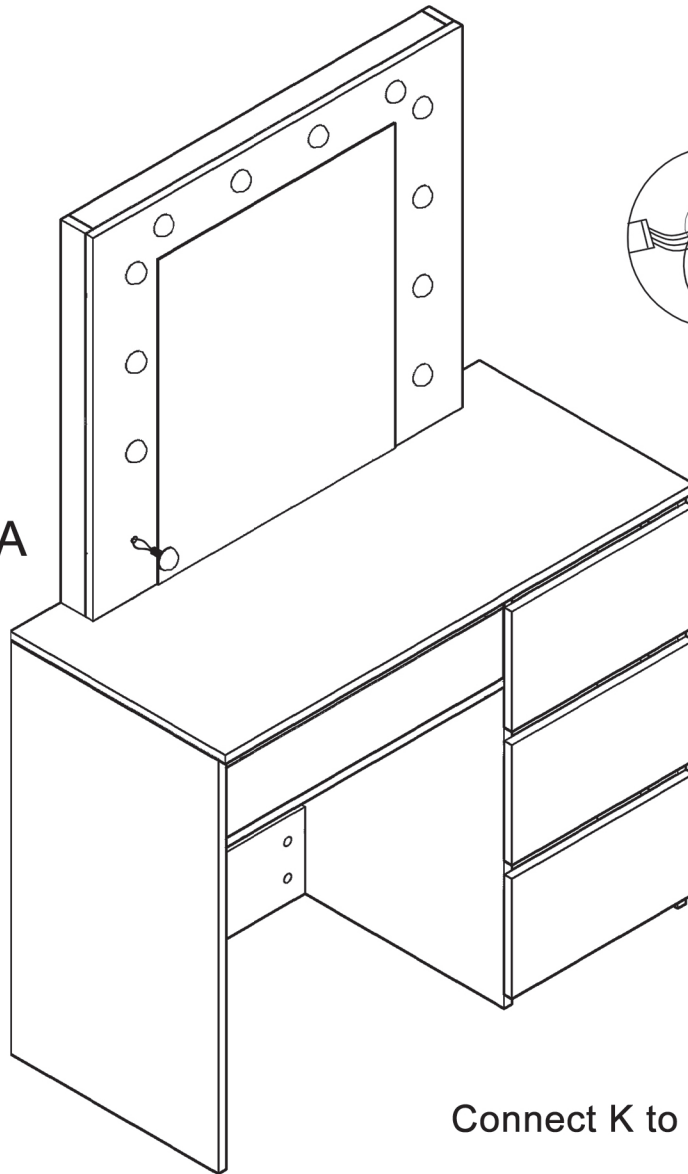


### HARDWARE

Ax16 C2x4 Gx16 Hx16

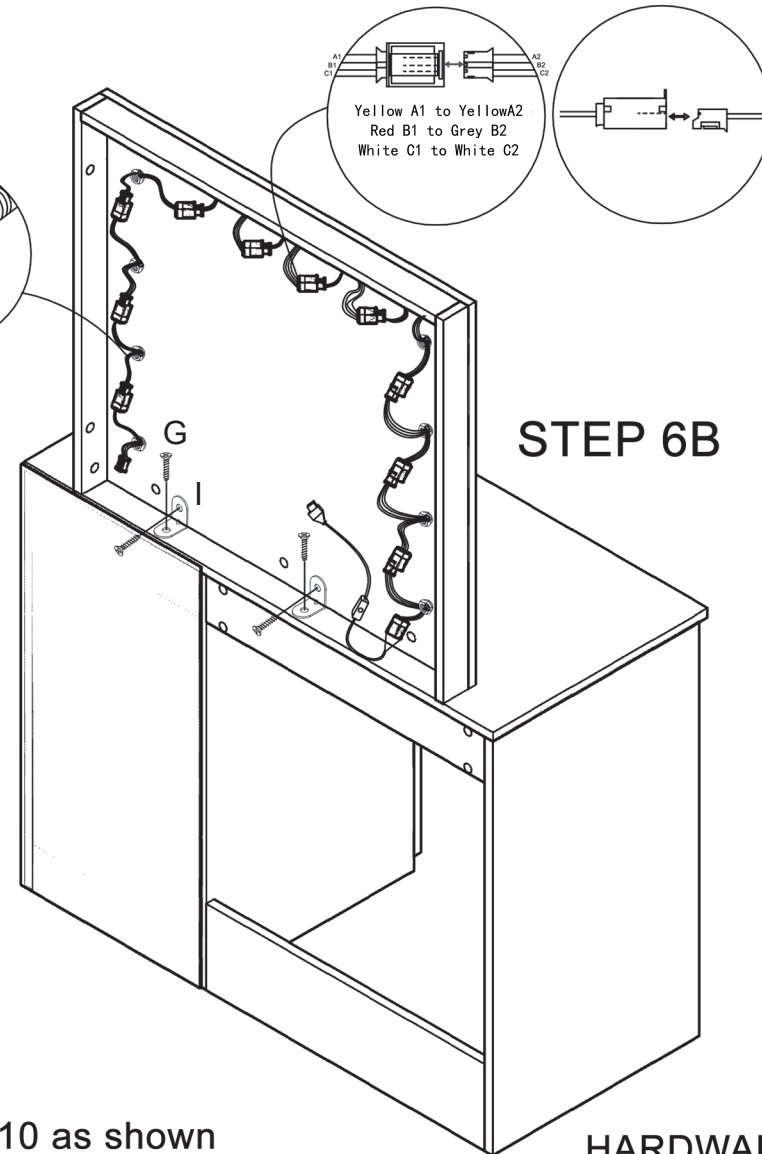
## ASSEMBLY STEPS

STEP 6A



Connect K to Part 10 as shown

STEP 6B

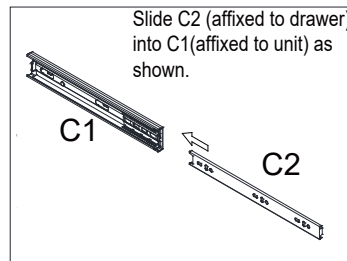
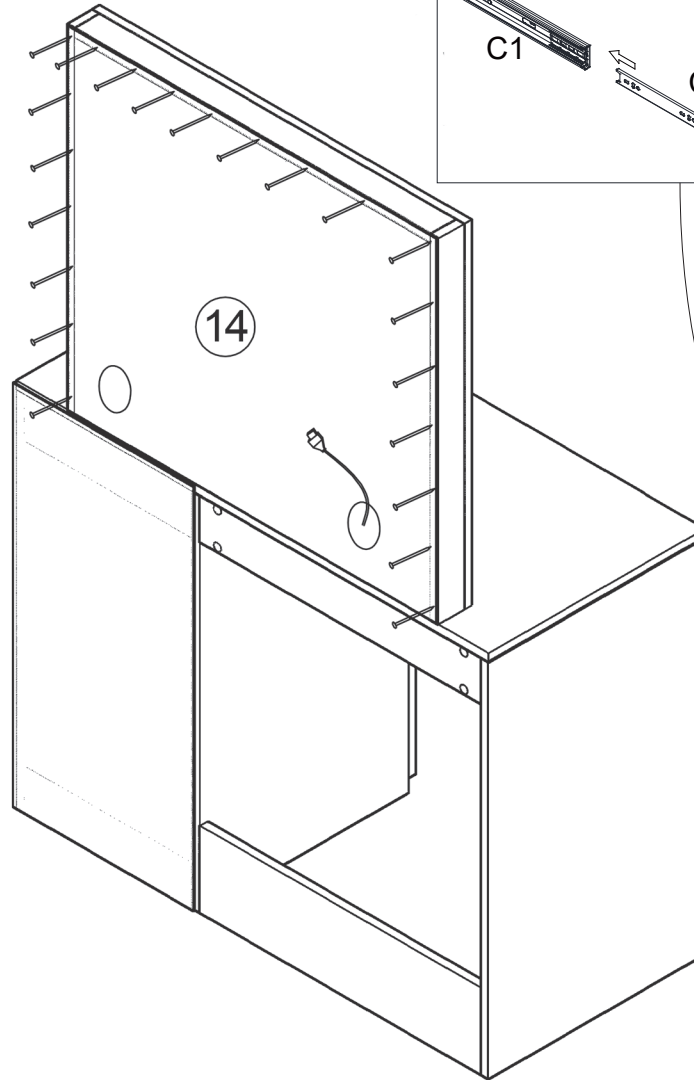


### HARDWARE

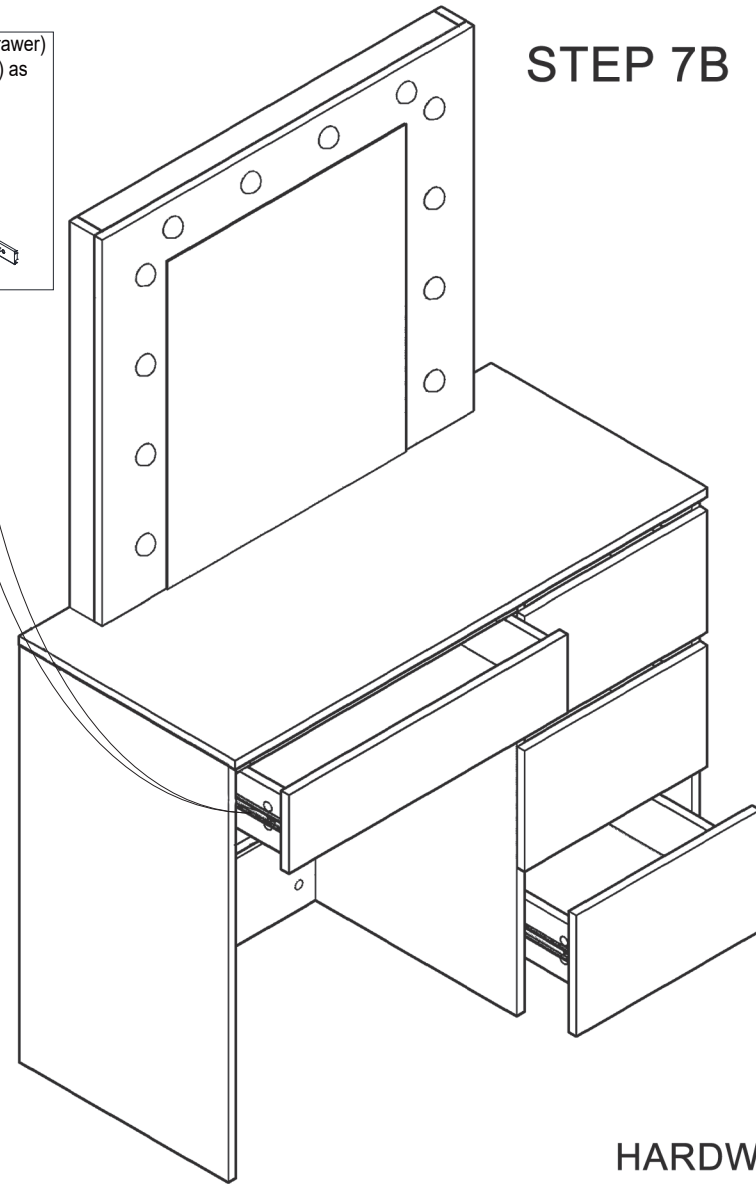
K x1 set  
I x 2 pcs  
G x 4 pcs

## ASSEMBLY STEPS

### STEP 7A



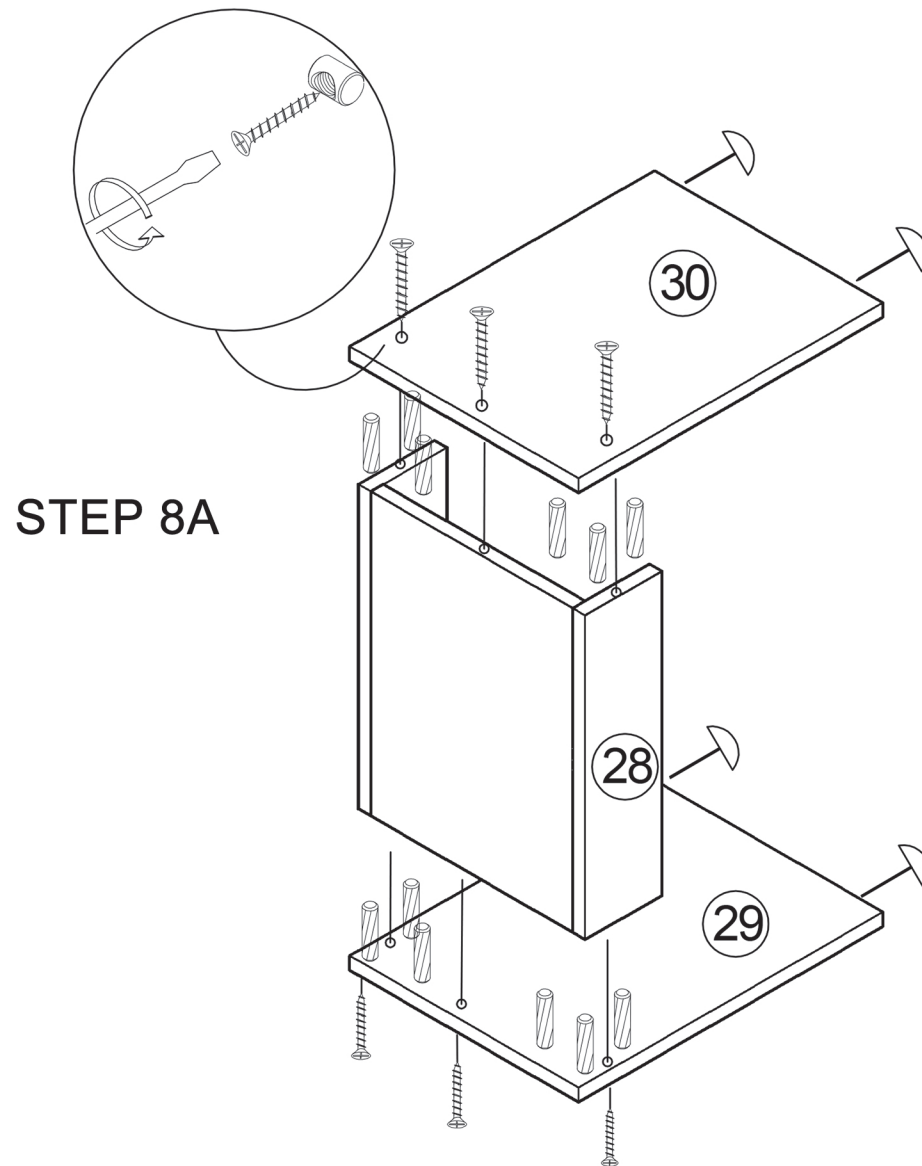
### STEP 7B



HARDWARE  
E x50

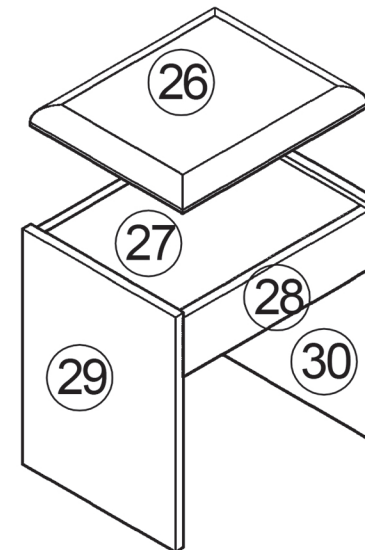


## ASSEMBLY STEPS

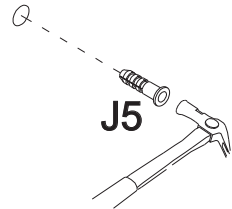
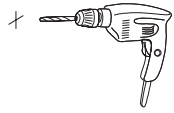


Assemble the stool as shown

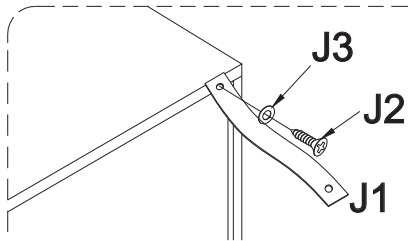
### STEP 8B



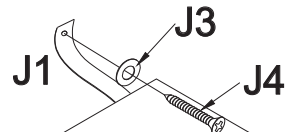
**HARDWARE**  
B x12 D x4 F x6



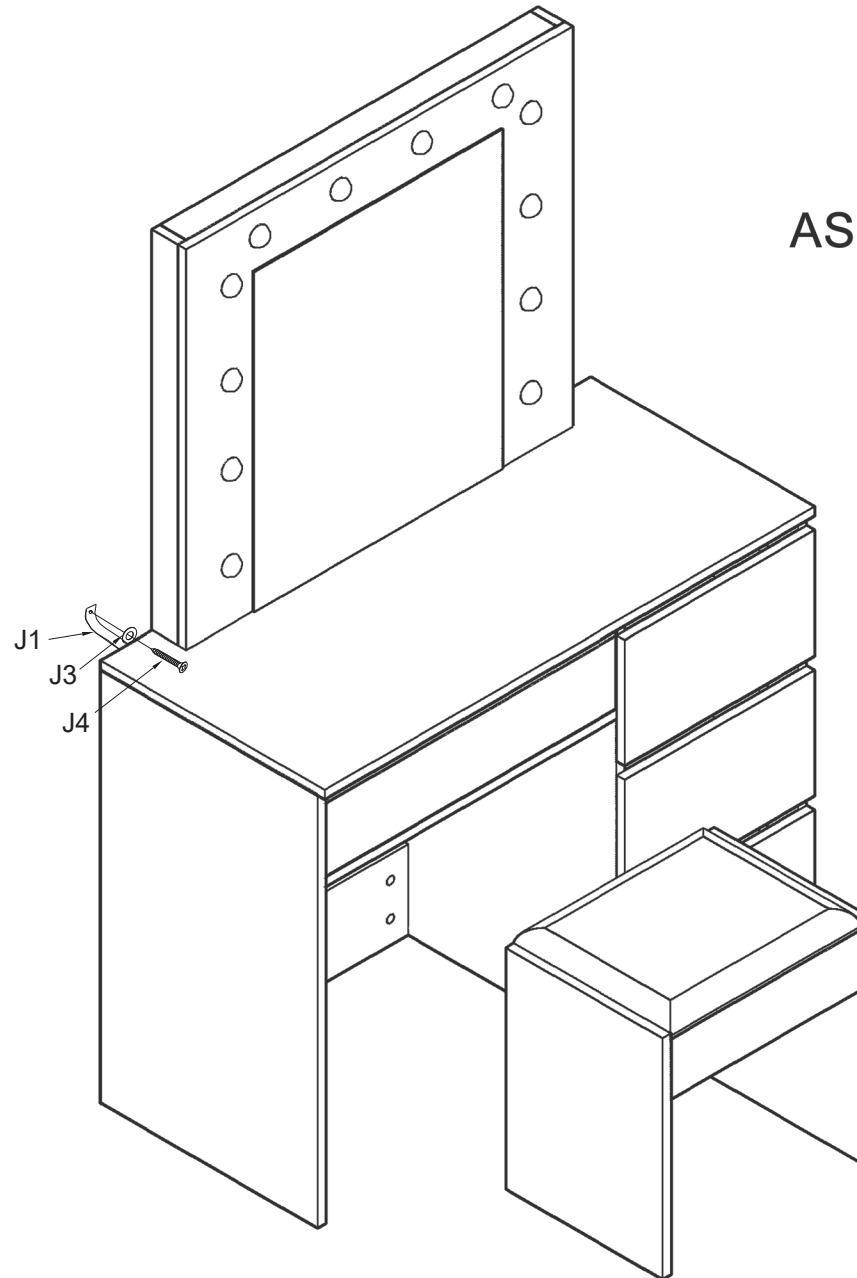
Pre-drilled hole in wall  
Lightly tap J5 into hole



Attach J1 to back of bedside  
table with J2 and J3



Secure J4 to wall  
with J3 and J1



ASSEMBLY COMPLETED

J x2 sets