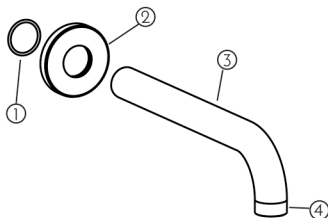
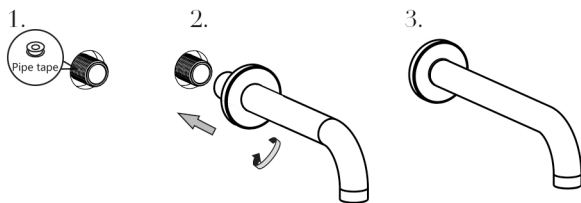


## Soul Wall/Bath Spout.



4	AERATOR	1
3	SPOUT	1
2	BACK PLATE	1
1	O-RING	1
NO#	DESCRIPTION	QTY



## Main body installation

**PREPARE:** Apply proper amount of PTFE TAPE on the threaded wall outlet.

**CONNECT:** Install Back Plate (2) and O-Ring (1) over Spout (3), allowing suitable working space.

Fasten Spout (3) onto threaded wall outlet by turning clockwise until tight and spout outlet is facing downward and straight.

**TRIM:** Gently slide Back Plate (2) against finished wall. The rubber O-Ring will keep into place. The rear of the Back Plate can also be fixed with non-acidic silicone or double-sided adhesive.