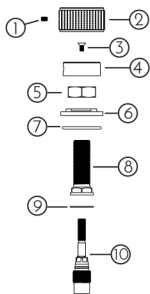


Soul Wall Top Assembly (pair).



10	1/2 TURN CERAMIC SPINDLE	2
9	FIBRE WASHER	2
8	SPINDLE LOCK NUT	2
7	LARGE FLANGE O-RING	2
6	LOCK FLANGE	2
5	CUT-OFF GAUGE	2
4	HANDLE ADAPTOR	2
3	FLAT SCREW	2
2	HANDLE	2
1	GRUB SCREW	2
NO#	DESCRIPTION	QTY

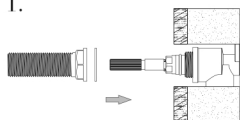


Before you start



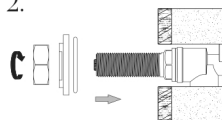
It is important to determine the finished wall depth for this product.
The embedded depth distance recommended is 38mm - 65mm.

1.



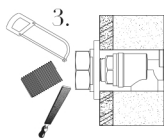
Screw Ceramic Spindle (10) into wall body. Insert Fibre Washer (9) and Spindle Lock Nut (8). Fasten.

2.



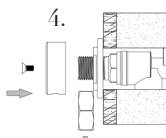
Insert Large O-Ring (7) and screw Lock Flange (6) and Cut-Off Gauge (5) tightly onto Spindle Lock Nut (8).

3.



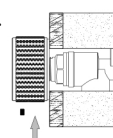
Saw off excess thread using Gauge as indicator and file edges.

4.



Remove Gauge and insert Handle Adaptor (4) and screw tight (3).

5.



Insert Handle (2) and fasten with Grub Screw (1) firmly.