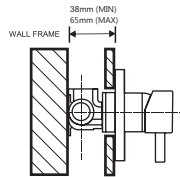
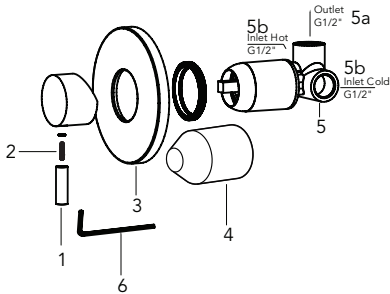


Soul Wall/Shower Mixer.



6	2.5MM ALLEN KEY	1
5	MAIN BODY GROUP	1
4	CARTRIDGE SHEATH	1
3	BACK PLATE	1
2	M5 GRUB SCREW	1
1	HANDLE	1
NO#	DESCRIPTION	QTY



Before you start

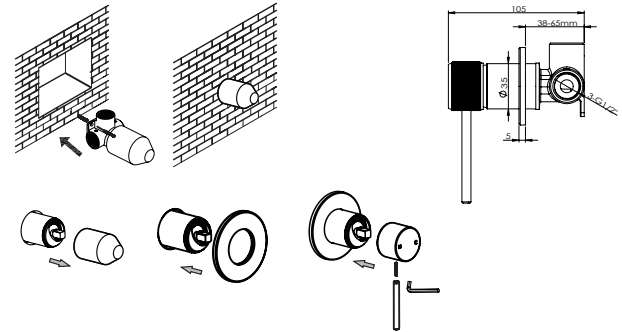
Clean and flush out water supply pipes before installing any of our products to ensure there is no foreign matter in the pipes that could damage your faucet.

Before product installation, confirm whether the installation space meets the requirements according to the product specification drawings.

It is important to determine the finished wall depth for this product.
The embedded depth distance recommended is 38mm - 65mm.

Main body installation

- CHECK:** Before installation, attach the threaded pipe connectors to the water inlet (5b) and ensure that the water inlet supply is at the same level to the wall.
- DEPTH:** Ensure that the Main Body (5) is properly secured in the wall, typically on a timber/metal noggin, through the mounting lugs and check that the depth is correct taking the finished wall into consideration.
- CONNECT:** Apply proper amount of PTFE TAPE on the inlet threaded pipe connector and connect hot and cold water supply (hot on the left, cold on the right, when viewed from operating position), or as marked on Main Body (5).



Seal test

- CLOSED:** Turn on the main water, carefully remove the Cartridge Sheath (4) and rotate the cartridge in its closed position, between hot and cold connection (anti-clockwise/clockwise), testing the pressure resistance and sealing performance of the pipeline to ensure there are no water leaks.
- OPEN:** Using a 1/2" plug, plug the outlet of the Main Body (5a). Open the cartridge (up direction), checking for any water leakage from the Main Body and the connections.
- PROTECT:** After the Seal Test, please replace the Cartridge Sheath (4) and continue installation if there were no water leaks present. Leaking joints are not covered by the warranty.

Embedding main body

- LEVEL:** Measure Main Body with parallel ruler to ensure it is perpendicular to the wall.
- CLEAR:** Ensure there is no rough concrete or tile glue/grout in contact with plated parts of the faucet allowing enough clearance and activity space for the handle wheel to manoeuvre.
- CONCEAL:** Finish tiles and grout.

Trim installation

- FINALISE:** After tiling is complete, remove Cartridge Sheath.
- TRIM:** Install Back Plate (3), adjust to suitable position. The rear of the Back Plate can be fixed with non-acidic silicone or double-sided adhesive.
- COMPLETE:** Install handle (1) to the cartridge. Fasten Handle using Grub Screw (2) and Allen Key (6).