

ASSEMBLY INSTRUCTION

DESCRIPTION 3299

Noosa 5 Drawer Chest

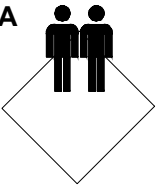
1.5hr

APPEOXIMATE ASSEMBLY TIME

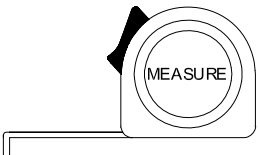
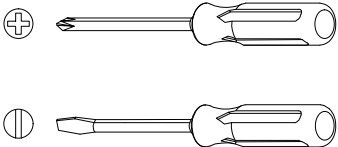
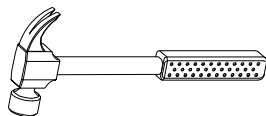
2 PERSON ASSEMBLY



FLOOR AREA
2MX1.6M

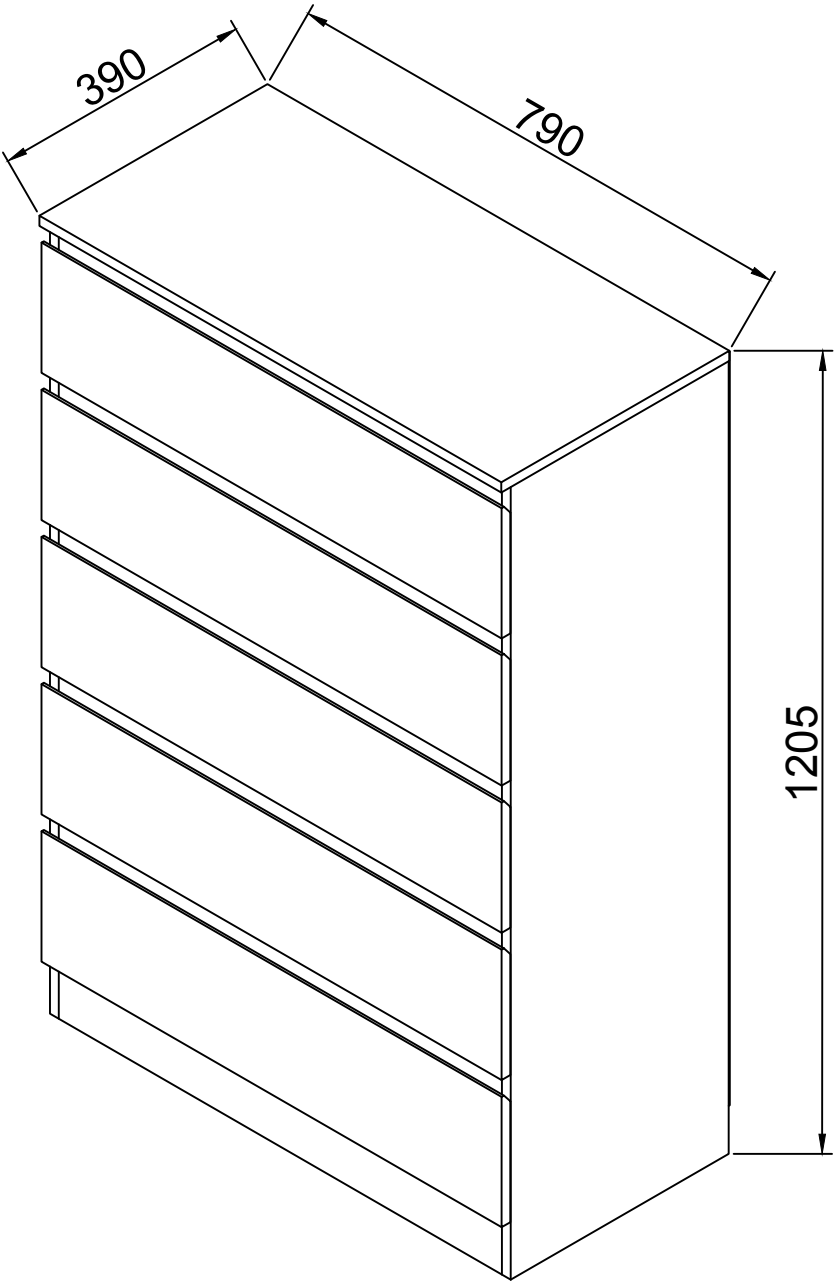


REQUIRED ASSEMBLY SPACE



REQUIRED ASSEMBLY TOOLS

ASSWMBLED DIMENSIONS

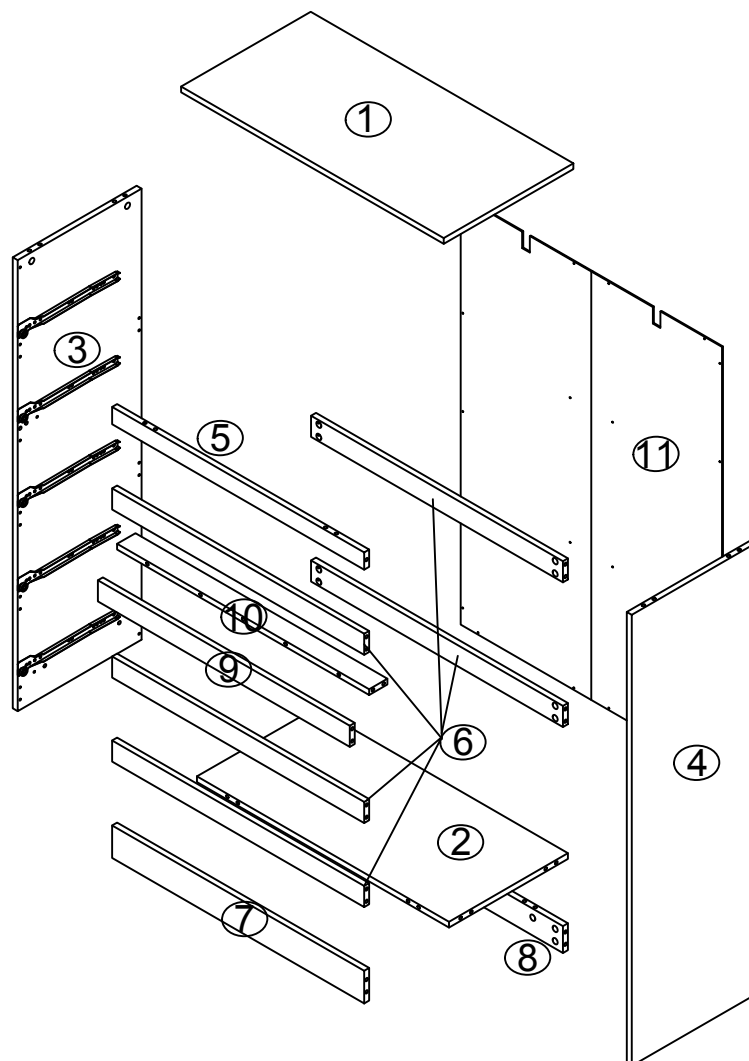
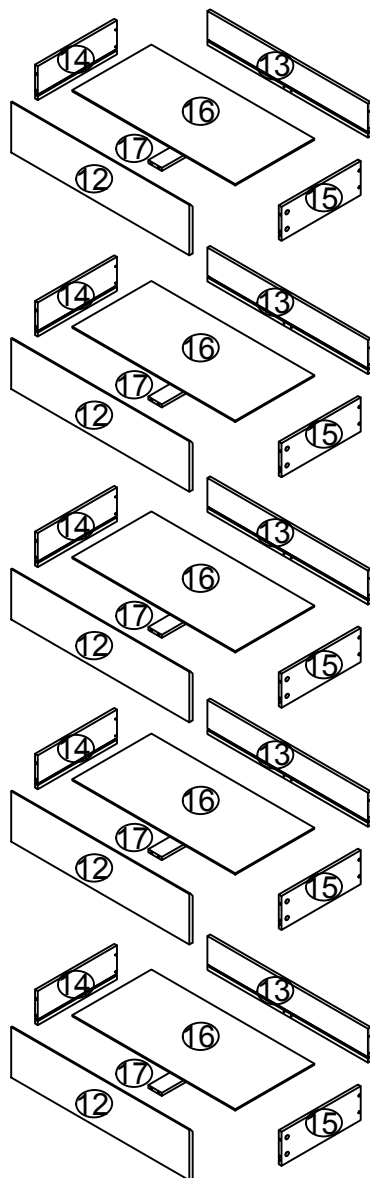


ASSEMBLY INSTRUCTION

DESCRIPTION
3299

Noosa 5 Drawer Chest

PARTS LIST



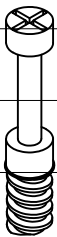
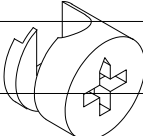

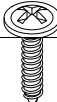
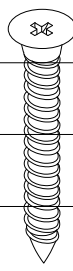
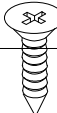
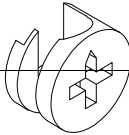
(1) NO.PARTS LIST	QTY	NO.PARTS LIST	QTY
(1) Part1	1	(12) Part12	5
(2) Part2	1	(13) Part13	5
(3) Part3	1	(14) Part14	5
(4) Part4	1	(15) Part15	5
(5) Part5	1	(16) Part16	5
(6) Part6	5	(17) Part17	5
(7) Part7	1		
(8) Part8	1		
(9) Part9	1		
(10) Part10	1		
(11) Part11	1		

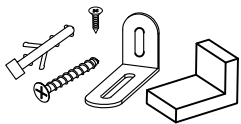
ASSEMBLY INSTRUCTION

DESCRIPTION
3299

Noosa 5 Drawer Chest

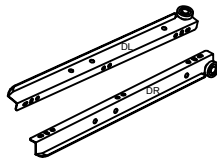
HARDWARE LIST

							7cm
							7cm
							6cm
							5cm
							4cm
							3cm
							2cm
							1cm
							
81	51	20	22	30	30	30	
M6.5m/m	Dia:15x12m/m	Dia:8x30m/m	Dia:3.5x12m/m	Dia:4x35m/m	Dia:3x12m/m	Dia:15x9.5m/m	
A	B	C	D	E	F	G	
CAM-BOLT	CAM-LOCK	WOOD DOWEL	WOOD SCREW	WOOD SCREW	WOOD SCREW	CAM-LOCK	



2X

H



5X

J

Top Tips before you start!

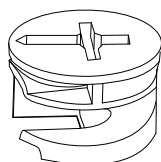
1. Please check that all parts are present before you start the assembly of your furniture, as once assembled, the furniture is exempt from our home approval policy.
2. For ease and speed of assembly, we recommend that before you commence each step of the assembly, that you identify all the parts required for that step.
3. For larger items, please ensure that you have sufficient space and people (as indicated on page 1) to assemble your product safely.
4. We recommend that, where possible, all items are assembled near to the area in which they will be placed in use, to avoid moving the product unnecessarily once assembled.
5. For the protection of your furniture, particularly items of high gloss finish, we recommend that the product is placed on a protected surface during assembly to prevent any damage.
6. During assembly please take care not to over-tighten any fittings, as this may damage the product.

Care and Maintenance of your Furniture

- Please periodically check all fittings and re-tighten as necessary.
- Please do not drag or pull your furniture.
- Wipe occasionally with a soft cloth slightly dampened with water. Then buff with a dry clean soft cloth.
- Never allow any kind of liquid to remain on your furniture. Absorption can cause wood to warp or finishes to de-laminate.
- Please do not sit or stand on this item.

SPECIAL TIPS FOR FITTING CAM-LOCKS AND CAM-BOLTS

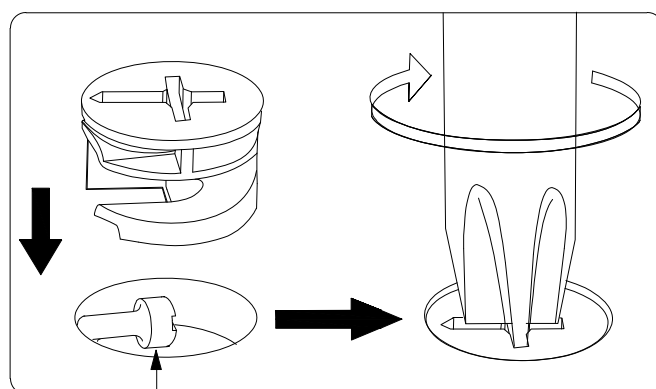
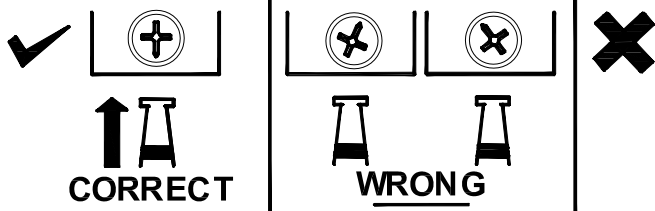
CAM-LOCK



Align with long point of cross

WHEN FITTING CAMS

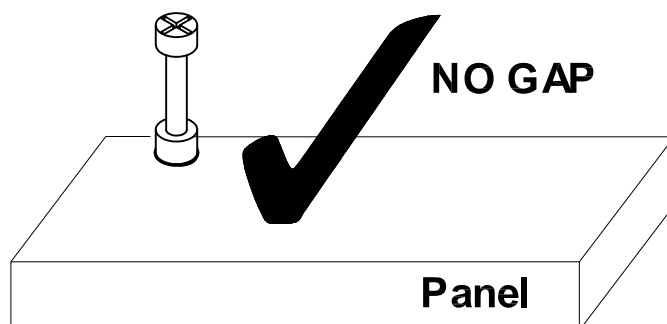
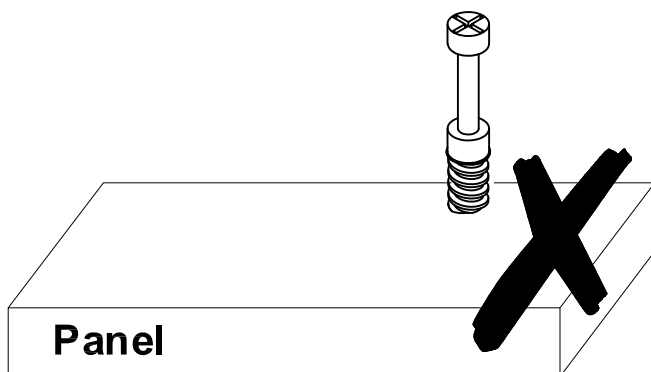
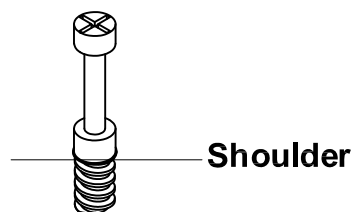
ENSURE STARTING POSITION IS CORRECT
BEFORE YOU INSERT CONNECTING CAM-BOLTS
TURN CLOCKWISE UNTIL SECURE



Lock head needs to be in centre

CAM-BOLT

Tighten until shoulder is flush
with panel. Do not overtighten
or undertighten (see example
below)

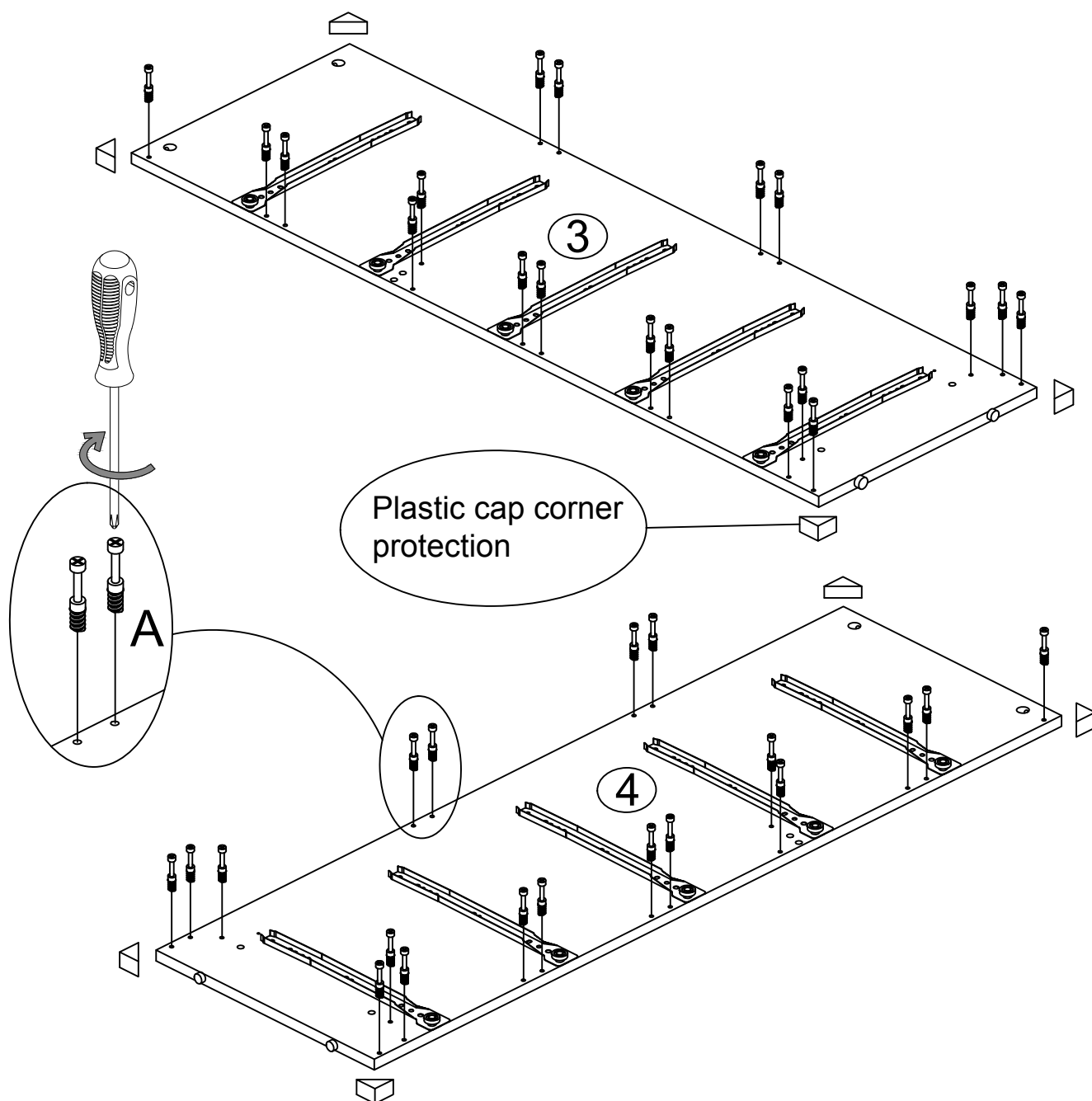


ASSEMBLY INSTRUCTION

DESCRIPTION
3299

Noosa 5 Drawer Chest

STEP 1



38X

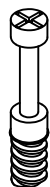
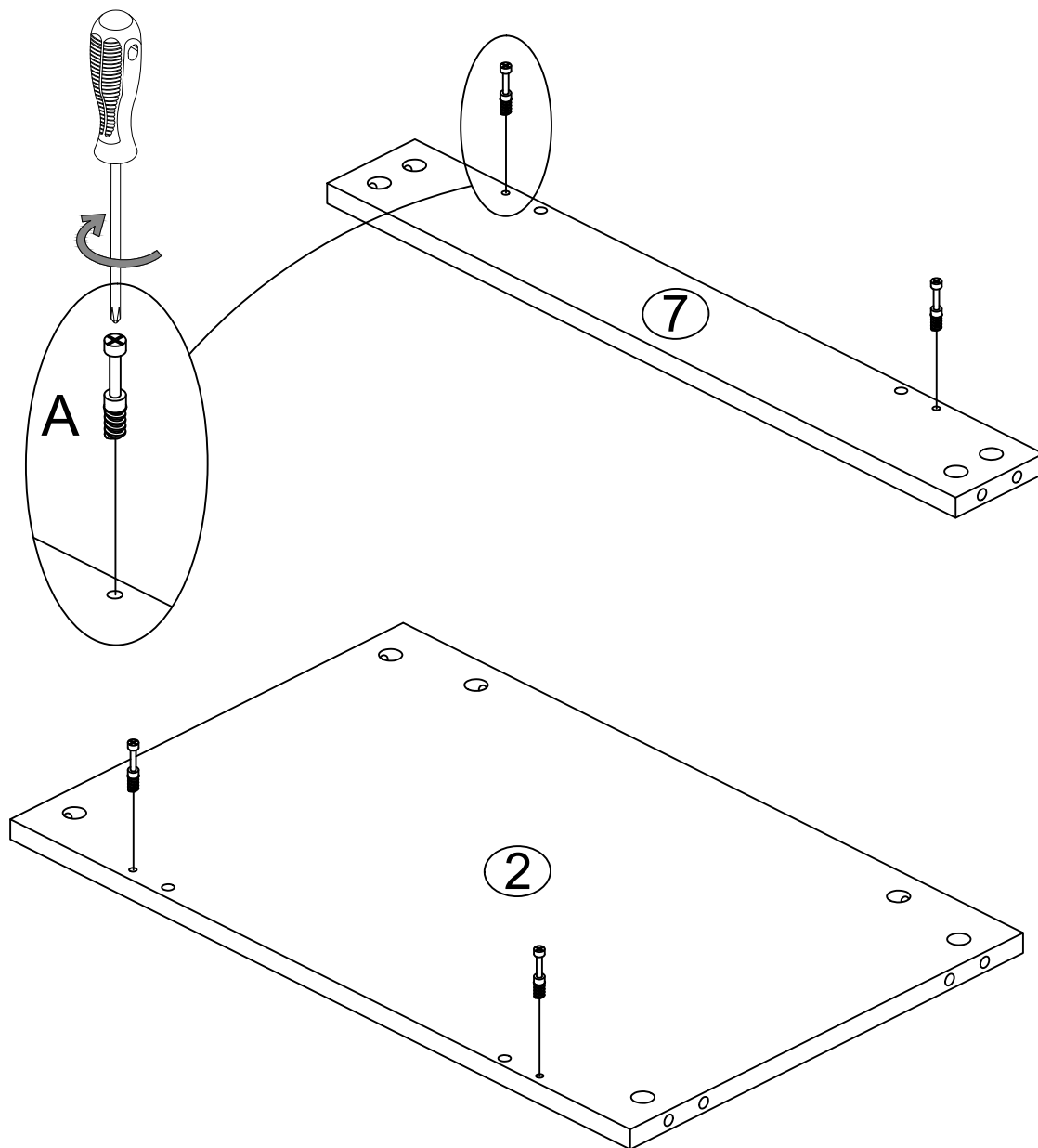
A

ASSEMBLY INSTRUCTION

DESCRIPTION
3299

Noosa 5 Drawer Chest

STEP 2



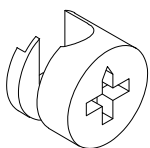
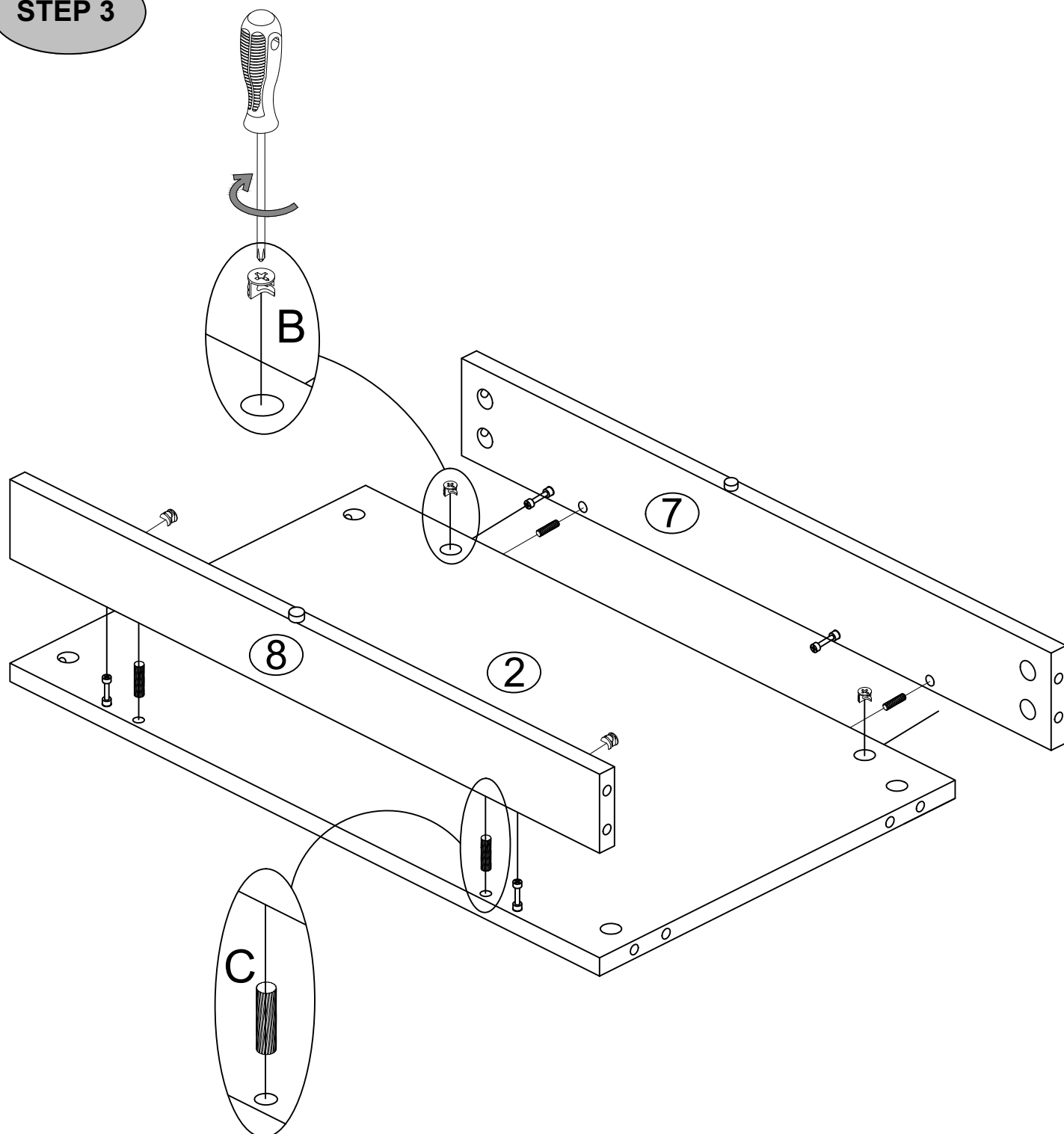
4X
A

ASSEMBLY INSTRUCTION

DESCRIPTION
3299

Noosa 5 Drawer Chest

STEP 3



4X
B



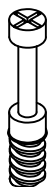
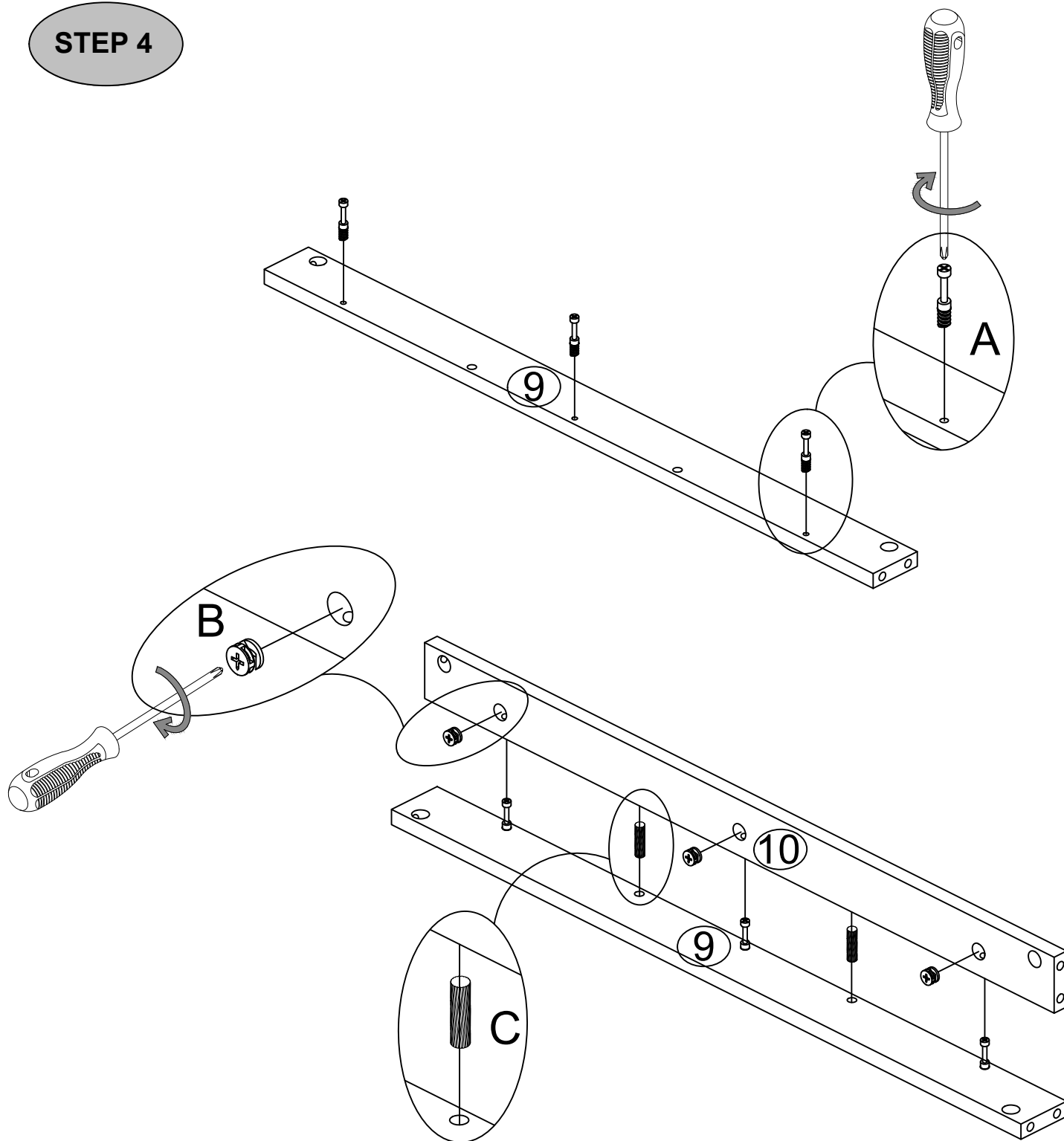
4X
C

ASSEMBLY INSTRUCTION

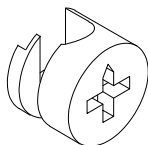
DESCRIPTION
3299

Noosa 5 Drawer Chest

STEP 4



3X
A



3X
B



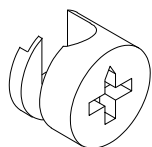
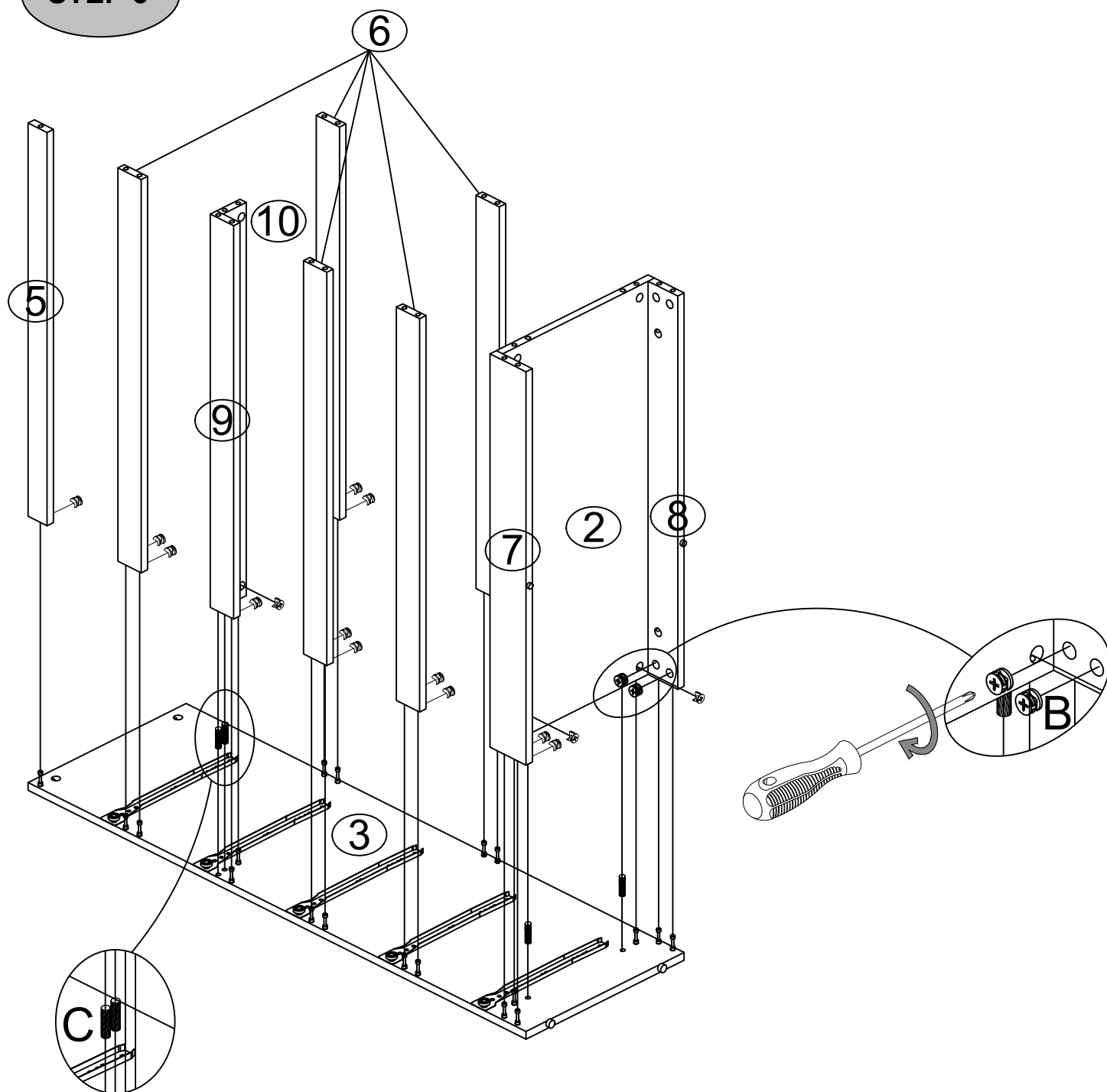
2X
C

ASSEMBLY INSTRUCTION

DESCRIPTION
3299

Noosa 5 Drawer Chest

STEP 5



19X
B



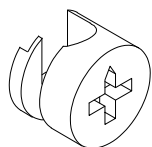
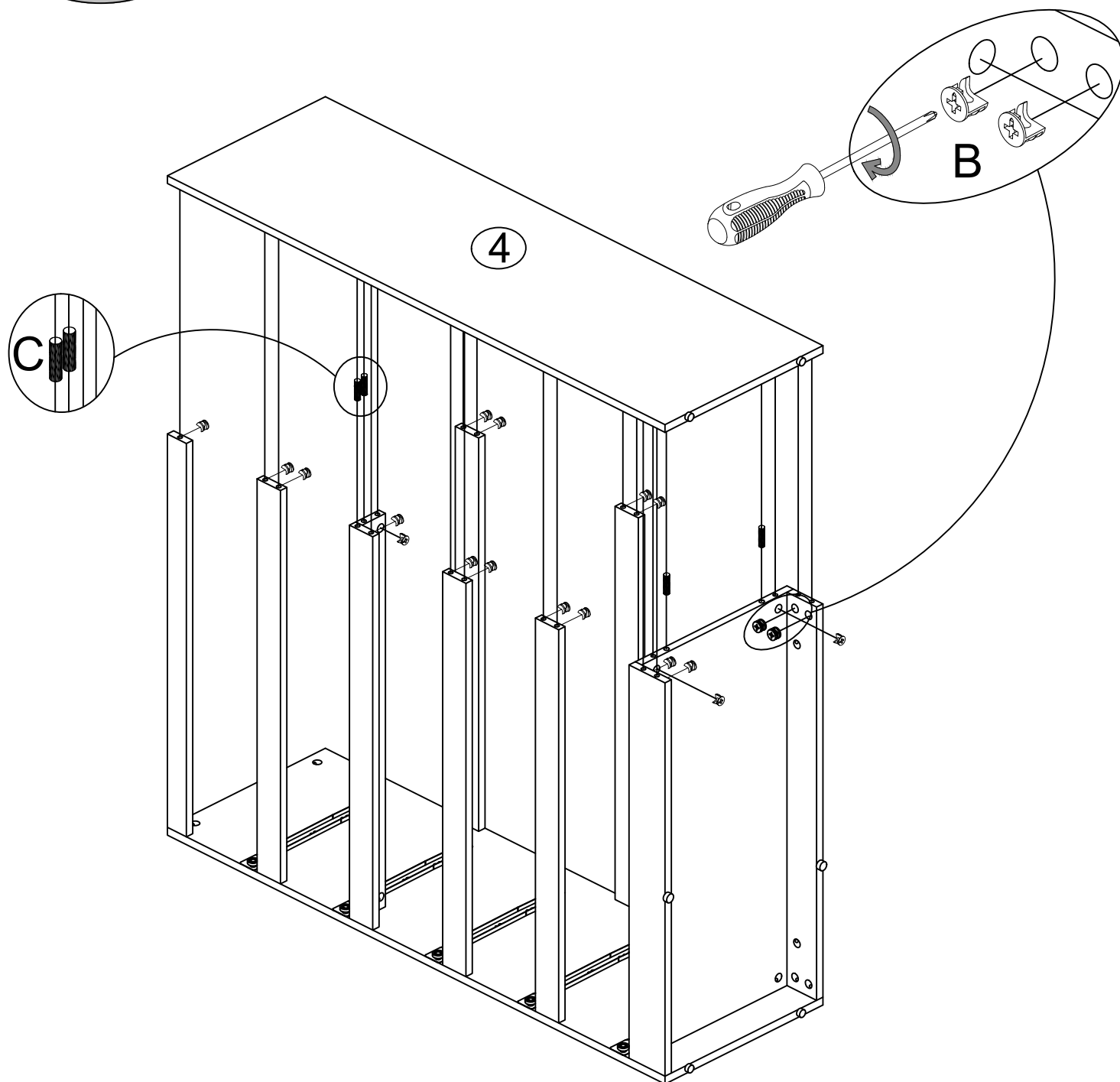
4X
C

ASSEMBLY INSTRUCTION

DESCRIPTION
3299

Noosa 5 Drawer Chest

STEP 6



19X
B



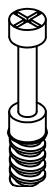
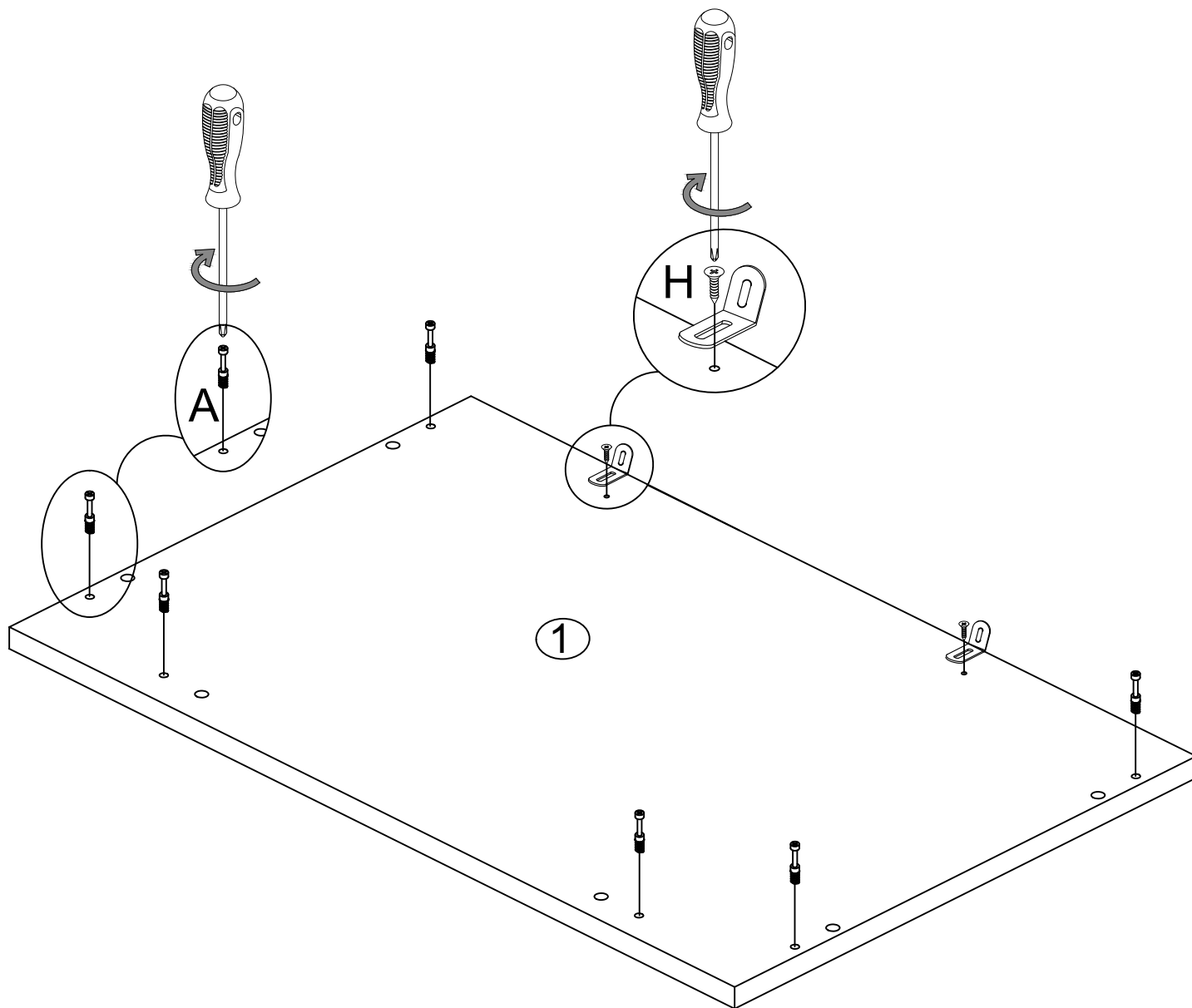
4X
C

ASSEMBLY INSTRUCTION

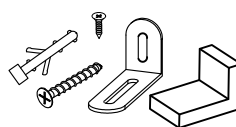
DESCRIPTION
3299

Noosa 5 Drawer Chest

STEP 7



6X
A



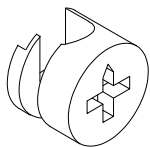
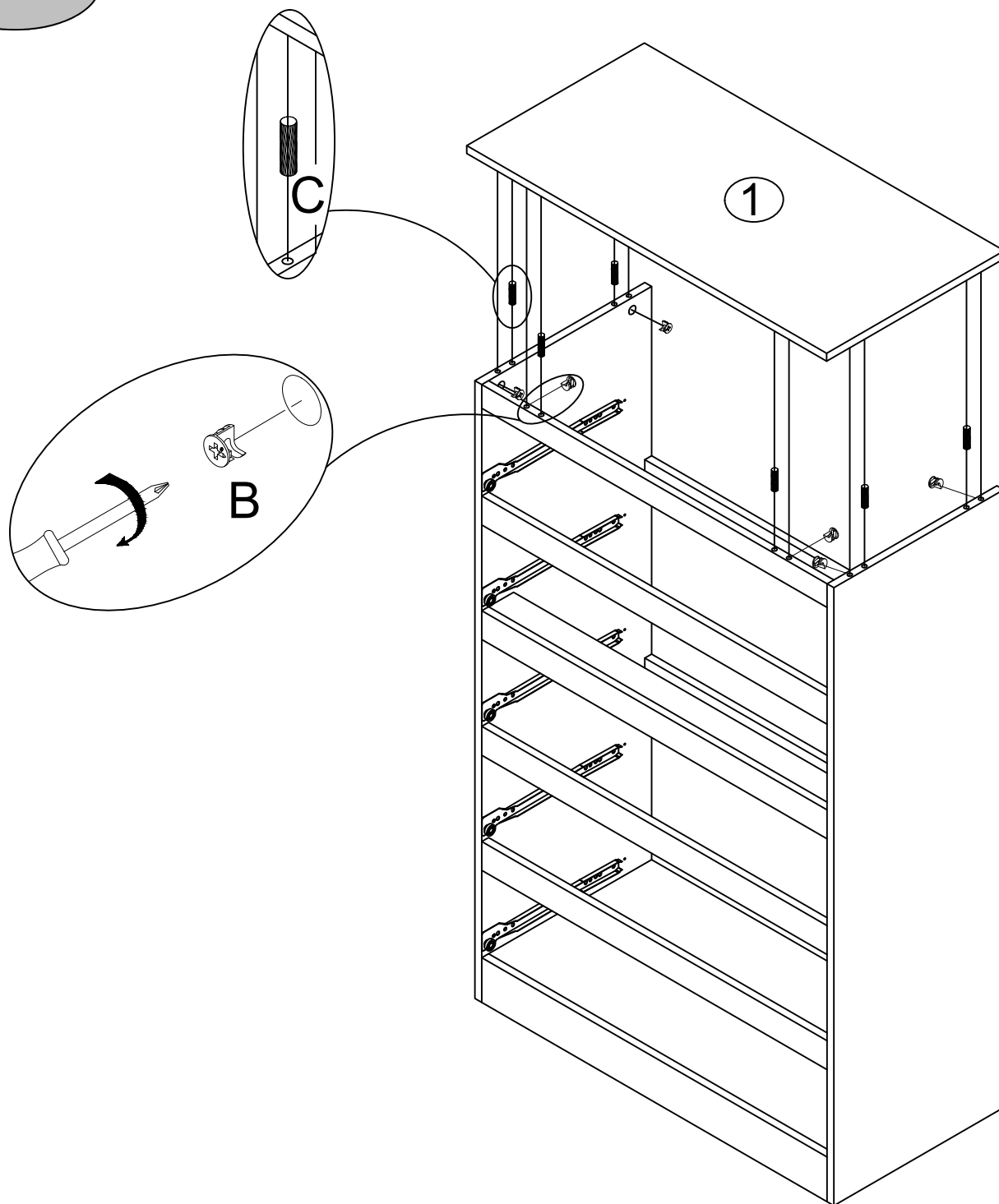
2X
H

ASSEMBLY INSTRUCTION

DESCRIPTION
3299

Noosa 5 Drawer Chest

STEP 8



6X
B



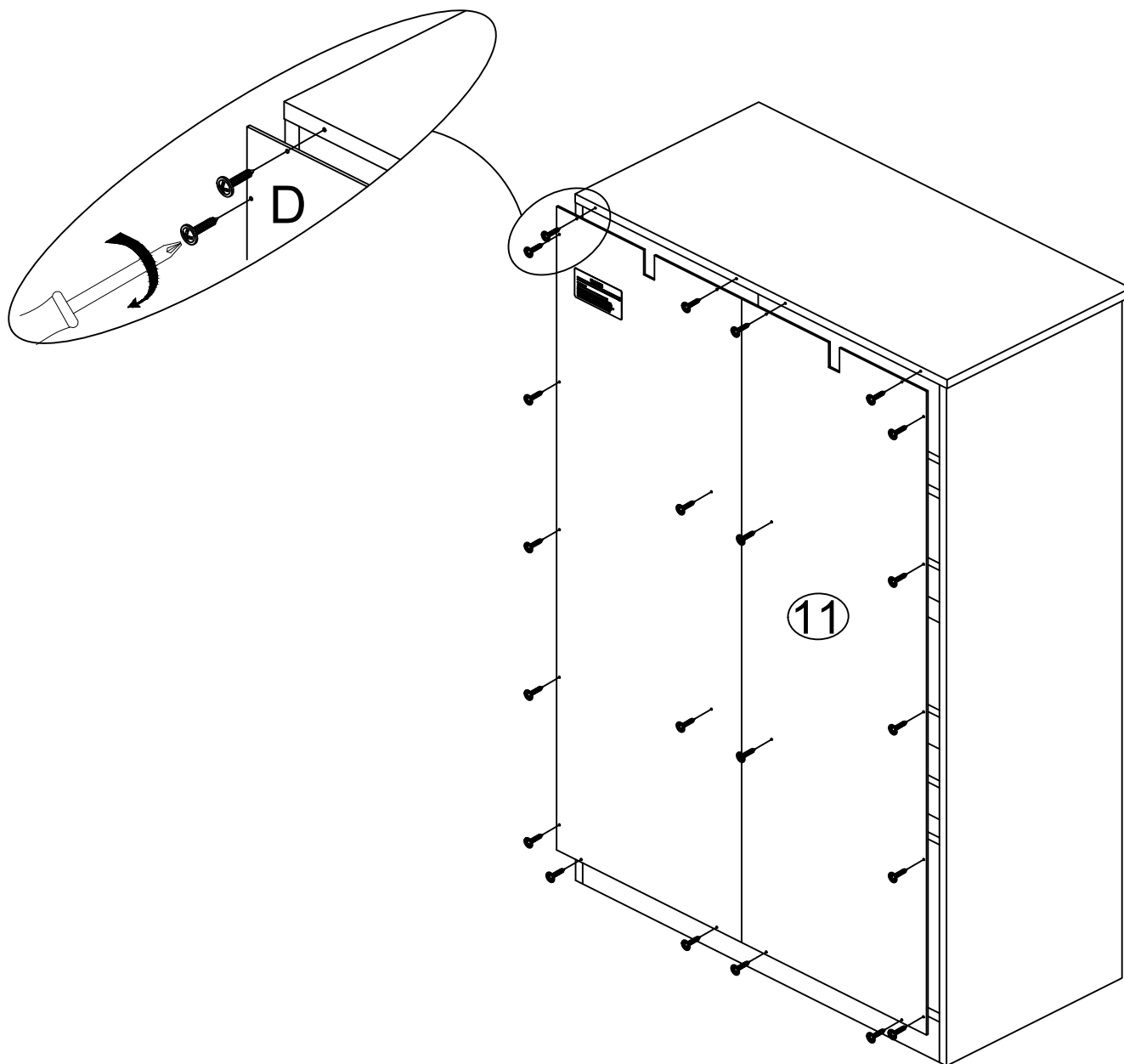
6X
C

ASSEMBLY INSTRUCTION

DESCRIPTION
3299

Noosa 5 Drawer Chest

STEP 9

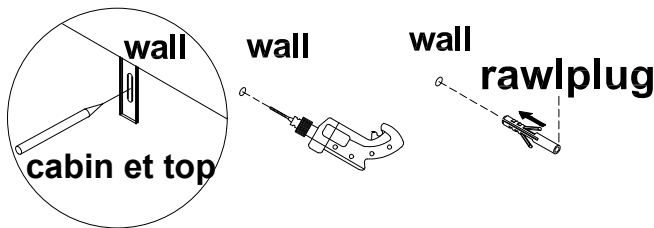


22X
D

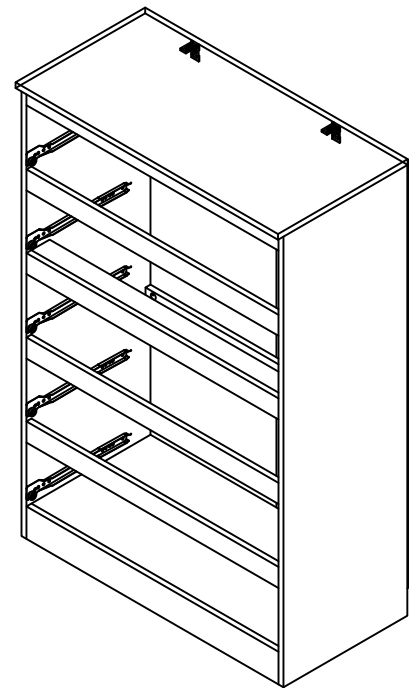
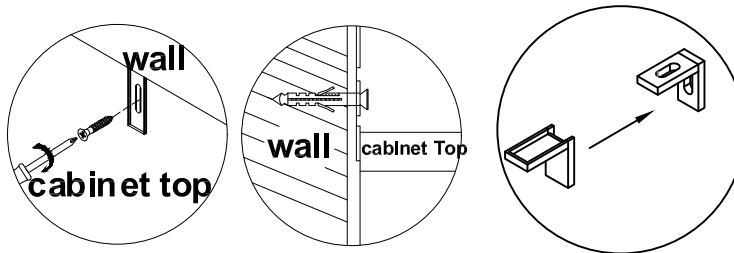
STEP 10

FITTING OF ANTI-TIP

Make a mark on
the wall through
the strap.



STEP 2:
Insert screw
through strap
into hole in wall



Drill a hole in the
wall and insert the
rawlplug

NOTE: wall fixings are not supplied with this product as different wall materials require different types of fixing devices (such as Rawl plugs on brick work). you must use fixing devices suitable for the type of wall you intend to mount this product. Please ensure that the head of any screw used has a diameter greater than the diameter of the mounting hole on the product and that the fixing is safe and secure before use.

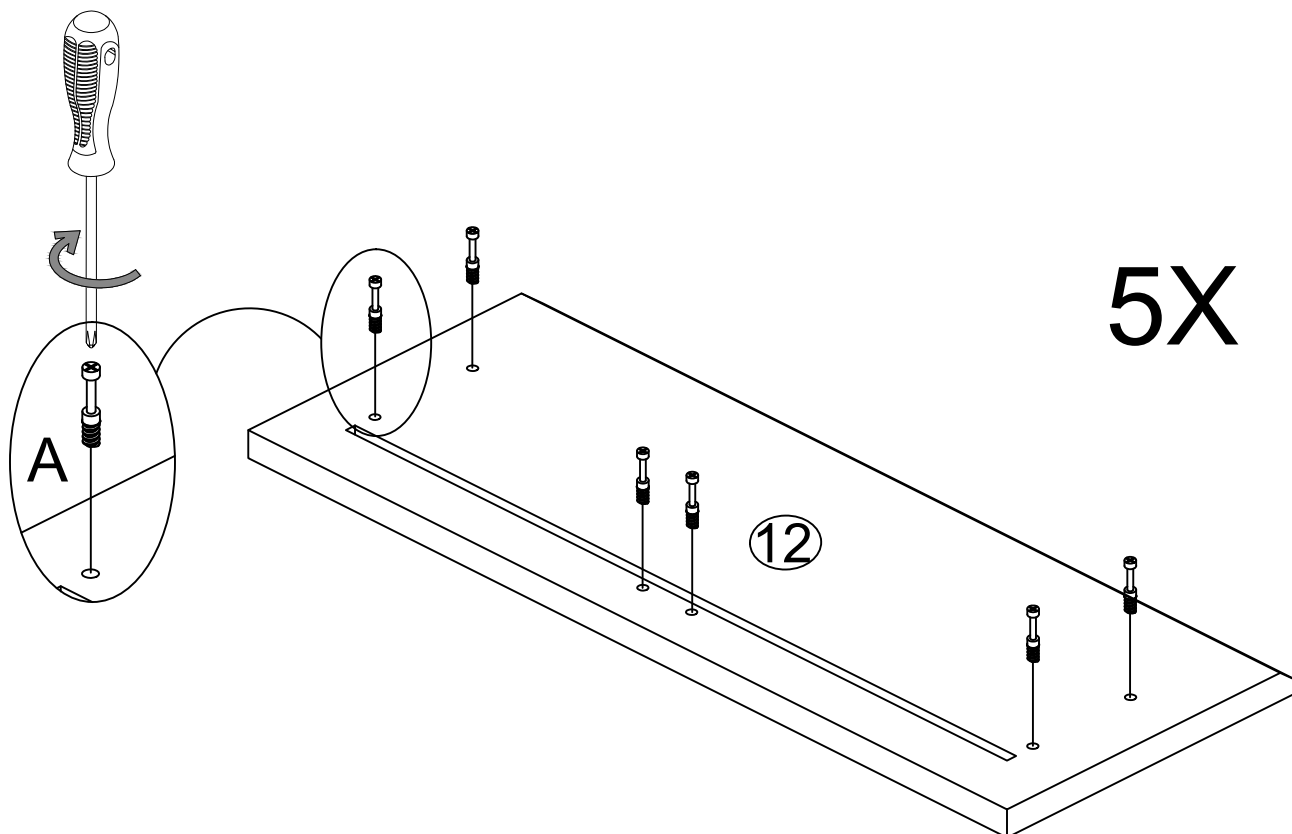
The screw supplied is to fix the bracket to the cabinet.

ASSEMBLY INSTRUCTION

DESCRIPTION
3299

Noosa 5 Drawer Chest

STEP 11



30X

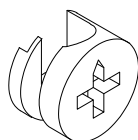
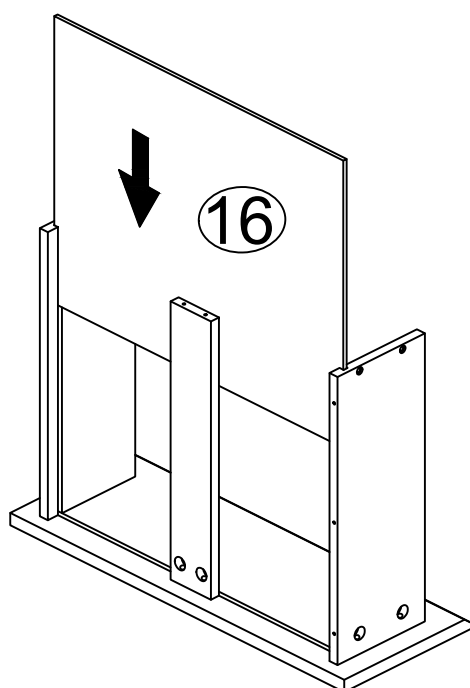
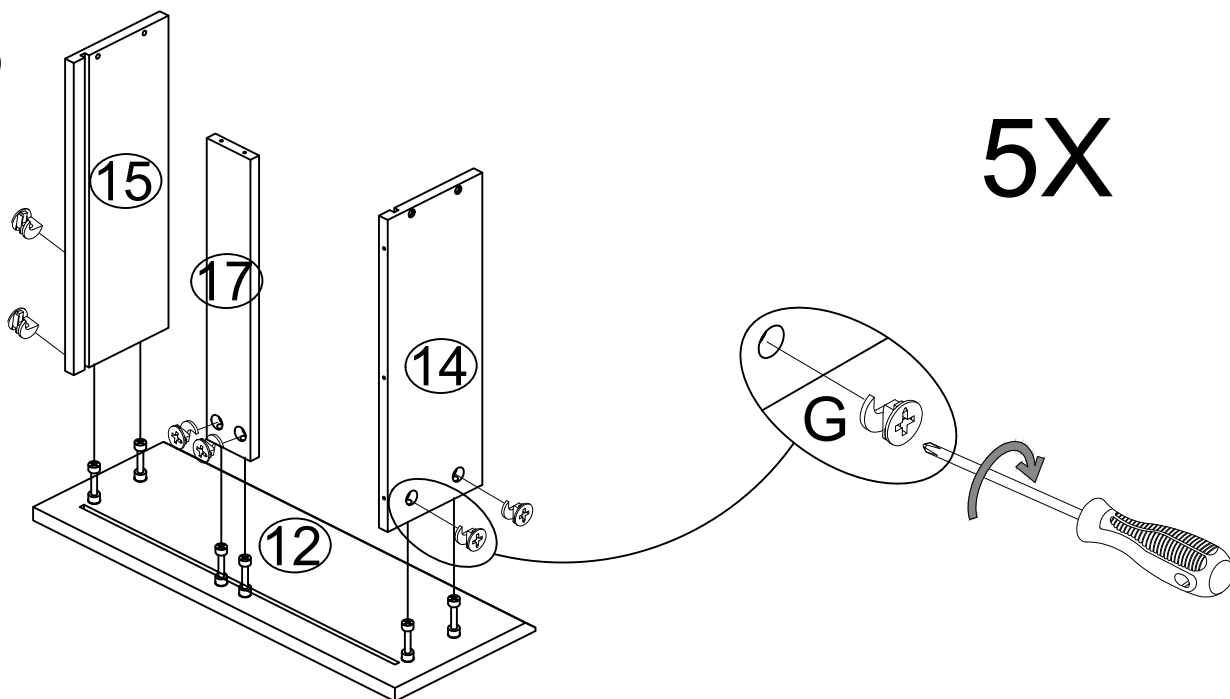
A

ASSEMBLY INSTRUCTION

DESCRIPTION
3299

Noosa 5 Drawer Chest

STEP 11



30X
G

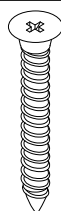
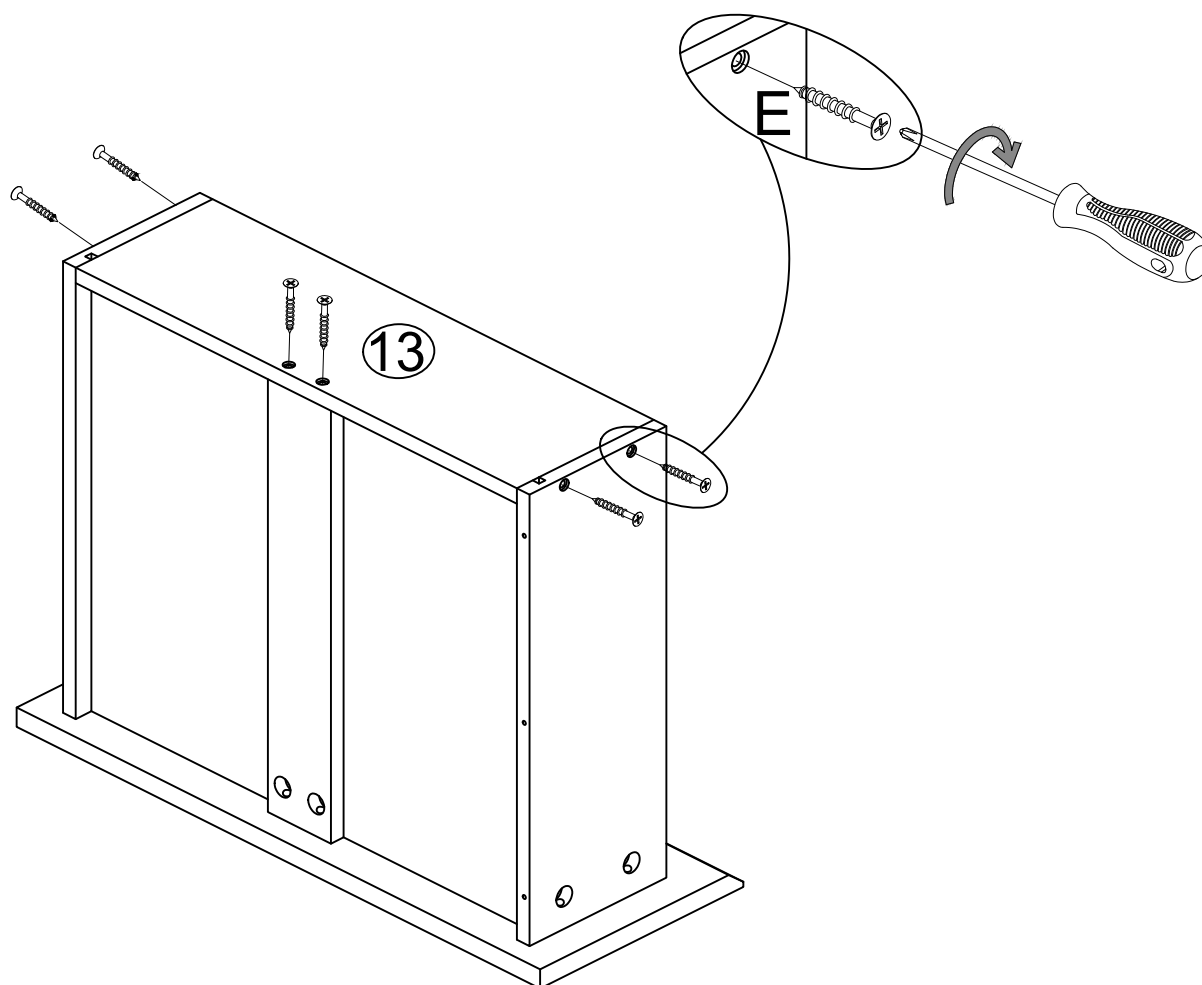
ASSEMBLY INSTRUCTION

DESCRIPTION
3299

Noosa 5 Drawer Chest

STEP 12

5X



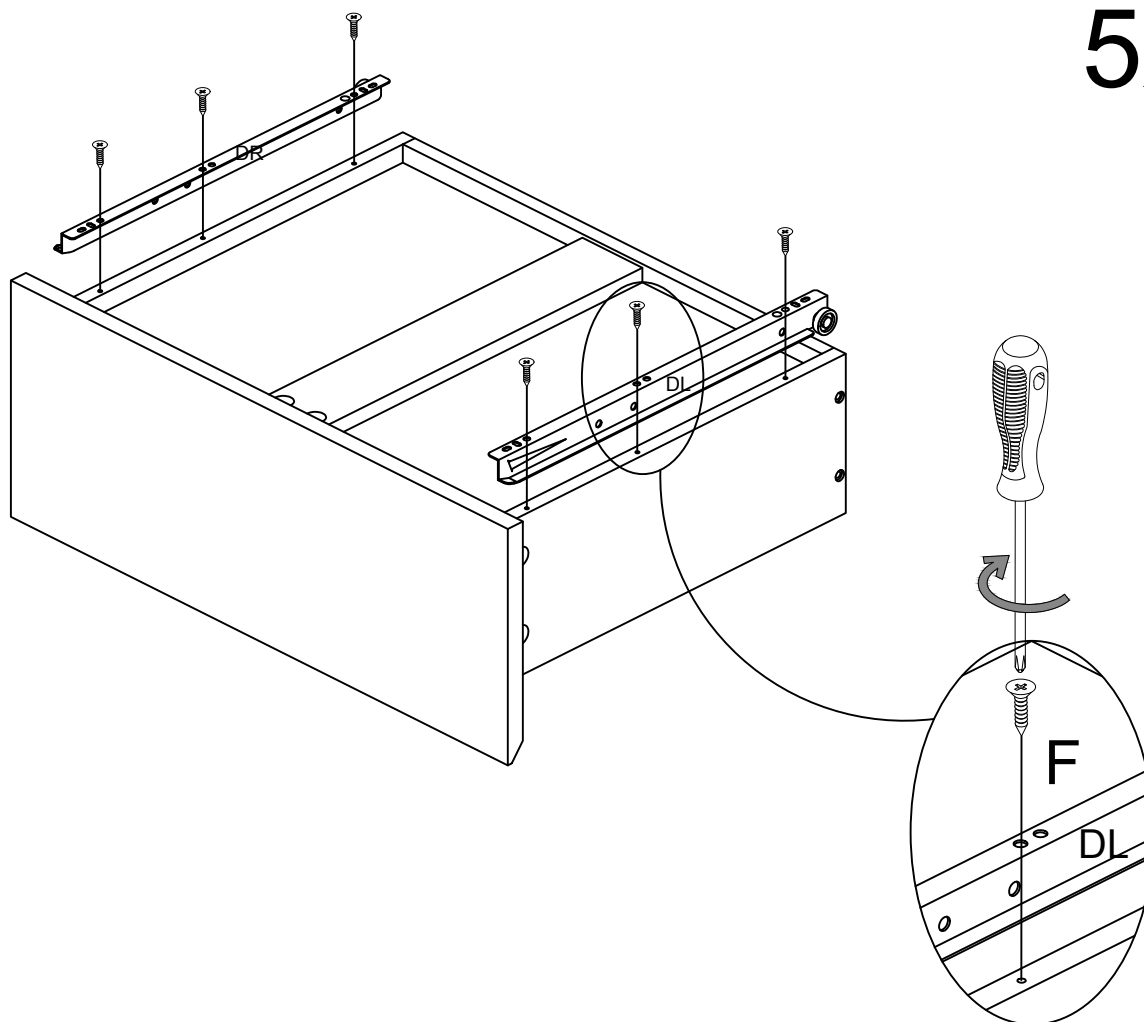
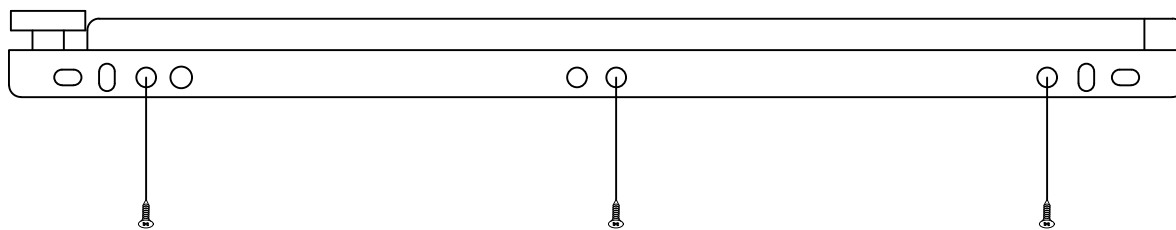
30X
E

ASSEMBLY INSTRUCTION

DESCRIPTION
3299

Noosa 5 Drawer Chest

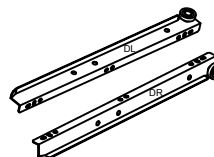
STEP 13



5X



30X
F



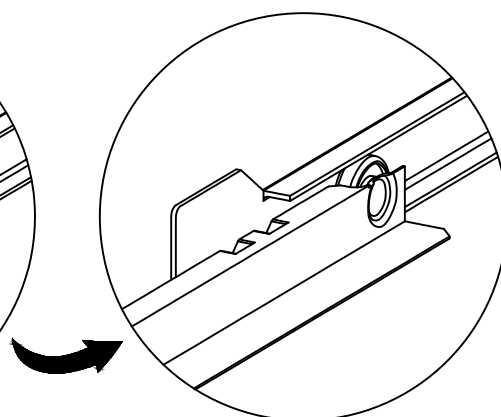
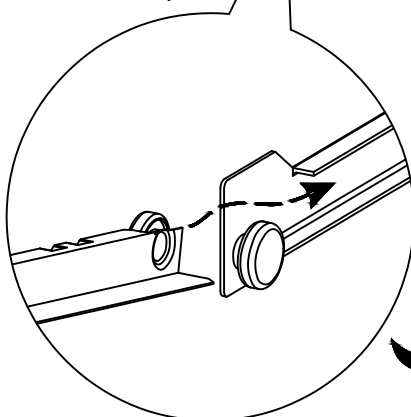
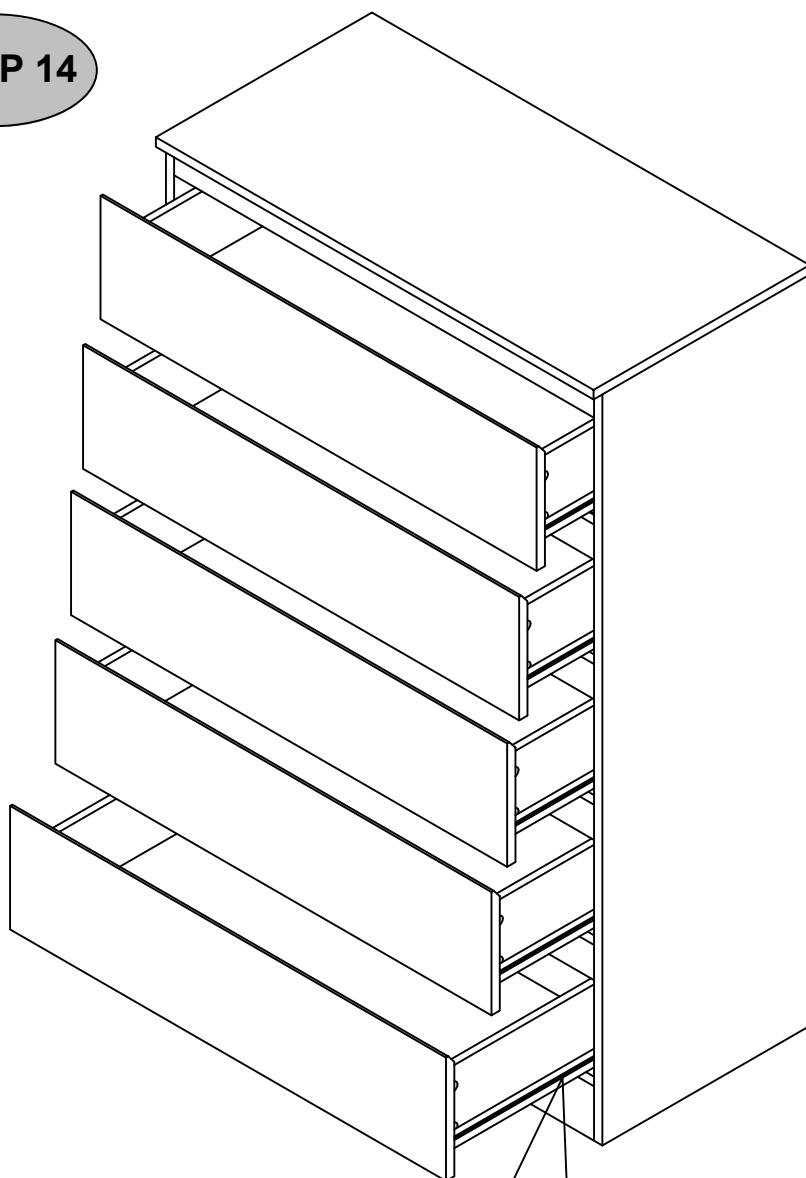
5X
J

ASSEMBLY INSTRUCTION

DESCRIPTION
3299

Noosa 5 Drawer Chest

STEP 14



ASSEMBLY INSTRUCTION

DESCRIPTION
3299

Noosa 5 Drawer Chest

STEP 15

