

# MB05

## FREE-STANDING BATH MIXER

meir.®

### FEATURES

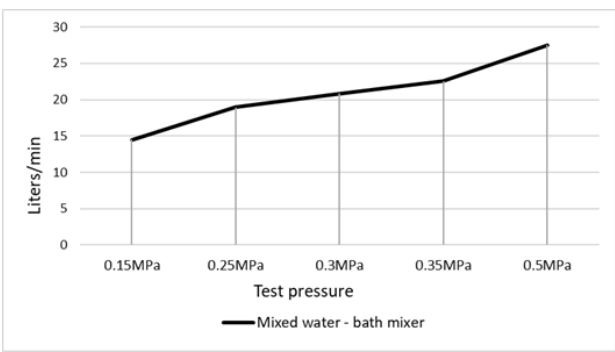
- Refer to the Meir website for warranty terms & conditions, and available finishes.
- Flow rate 20 L p/m at 3 bar pressure.
- European components and cartridge
- Solid brass construction
- Box Weight 6.5 Kg

### CARE

- Do not install tapware using any form of acetone silicones.
- Do not apply physical items (such as tools) directly to product.
- Never use house-hold or commercial detergents, citrus based cleaners, or abrasive cleaners.
- Clean using a mild washing soap solution rinsed, and dry with a soft cloth.
- Check for any product defects before installation.
- Refer to the installation manual for correct installation.



### FLOW RATE GRAPH

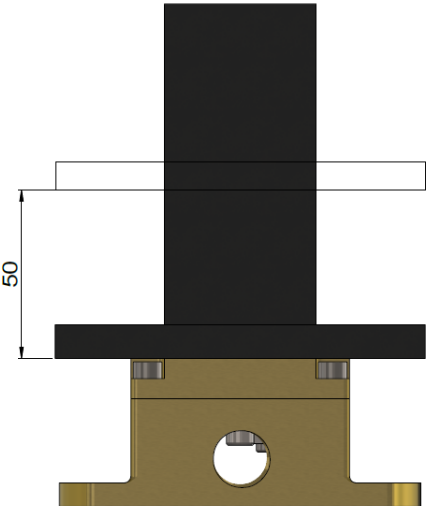


### CREDENTIALS

- Watermark AS/NZS3718WMKA25013

### HC@9F 5B79

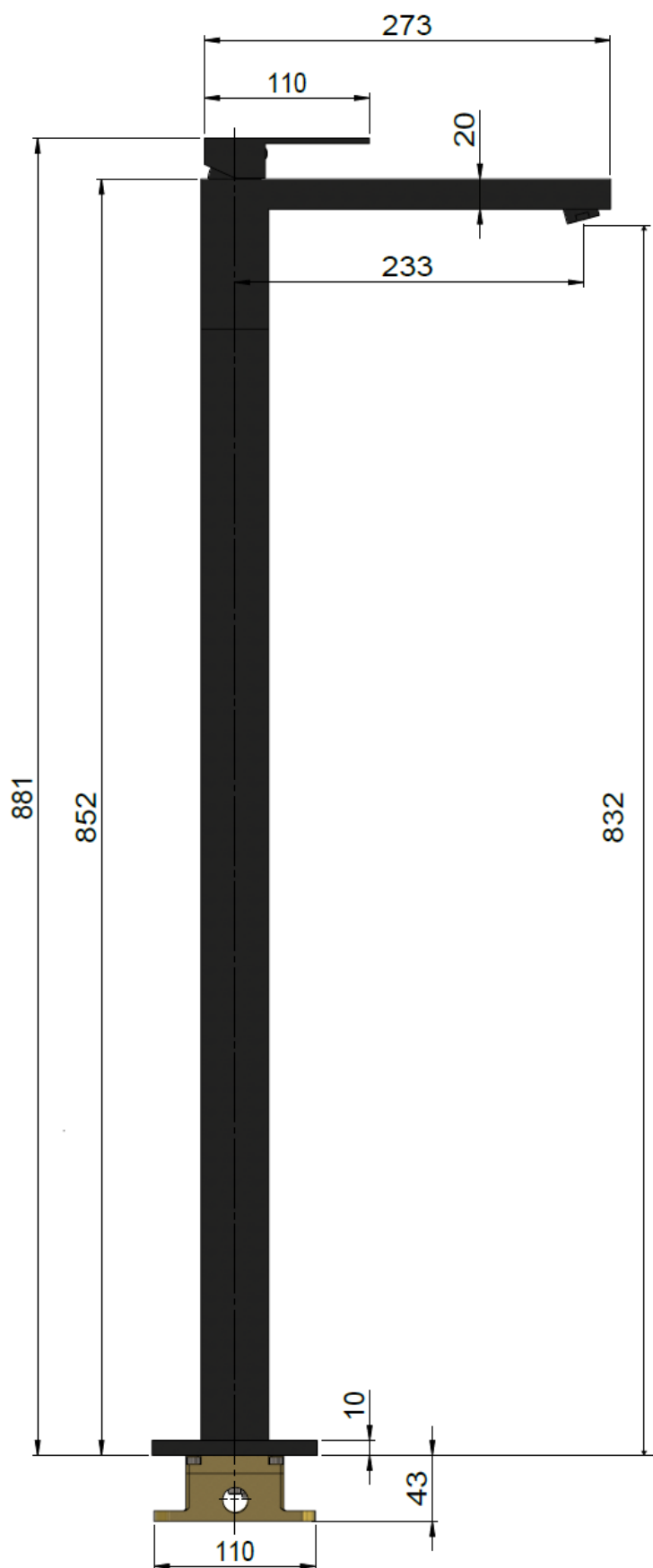
Flange Tolerance



# MB05

## FREE-STANDING BATH MIXER

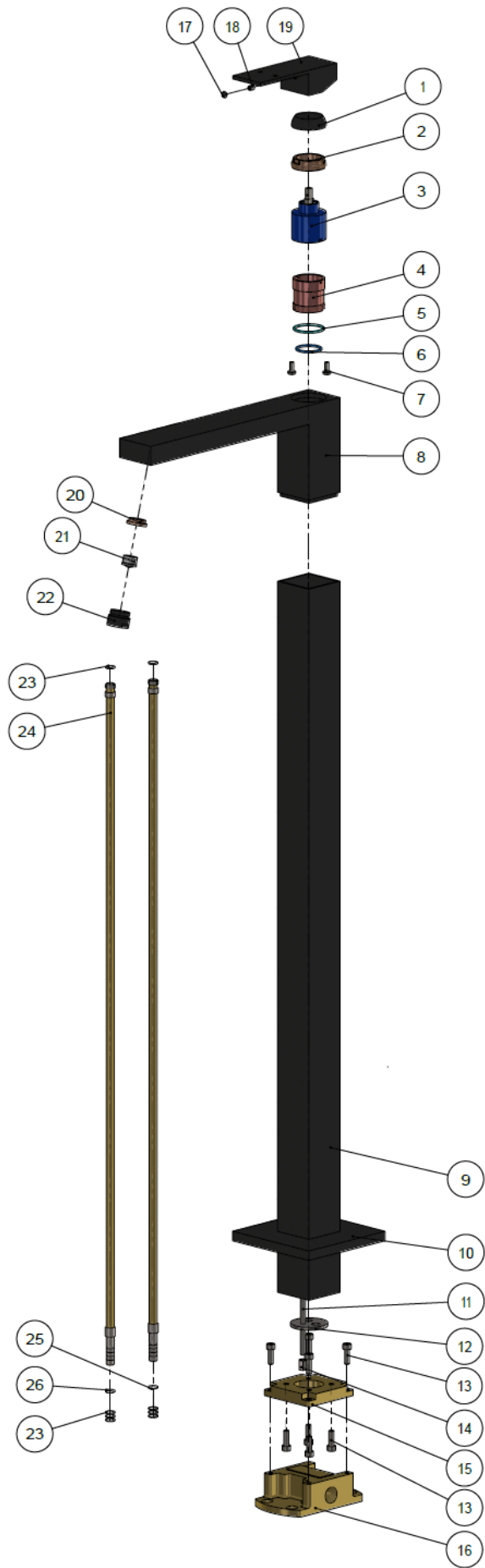
### SPECIFICATIONS



# MB05

## FREE-STANDING BATH MIXER

9L D@C 898 J 9K



No.	Part Name
1	Decor Cover
2	Nut
3	D35 Cartridge
4	Cartridge Base
5	O-ring
6	O-ring
7	Screw
8	Welding Body
9	Stand Pipe
10	Back Plate
11	Connecting Screw
12	Stator
13	Screw
14	Nut
15	Fix Plate
16	Base
17	Decor Knob
18	Screw
19	Handle
20	Flat Washer
21	Aerator
22	Aerator Shell
23	O-ring
24	Connecting Pipe
25	O-ring
26	O-ring