

# MK01 KITCHEN MIXER

meir®



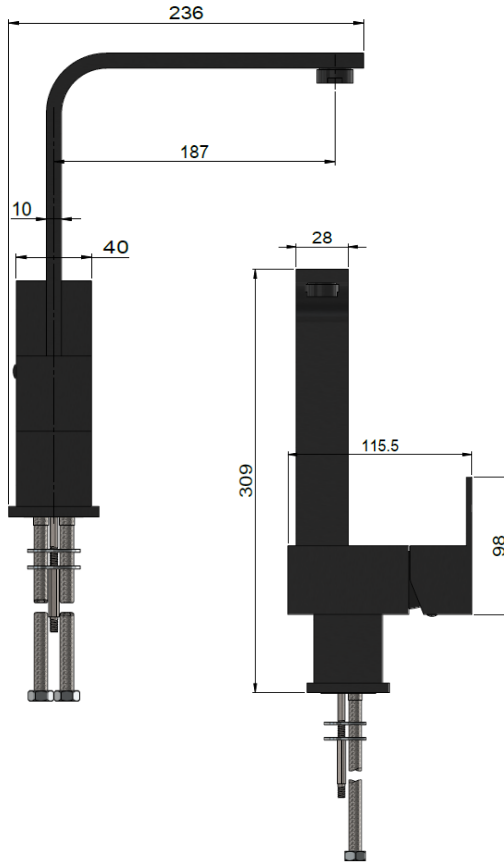
## FEATURES

- Refer to the Meir website for warranty terms & conditions, and available finishes.
- Flow rate **9 L p/m** at 3 bar pressure.
- European components and cartridge
- Solid brass construction
- Box Weight 2.1 Kg

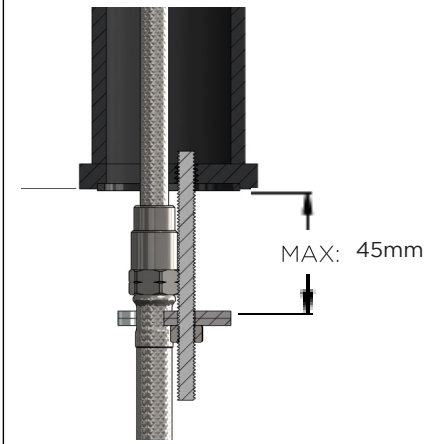
## CARE

- Do not install tapware using any form of acetone silicones.
- Do not apply physical items (such as tools) directly to product.
- Never use house-hold or commercial detergents, citrus based cleaners, or abrasive cleaners.
- Clean using a mild washing soap solution rinsed, and dry with a soft cloth.
- Check for any product defects before installation.
- Refer to the installation manual for correct installation.

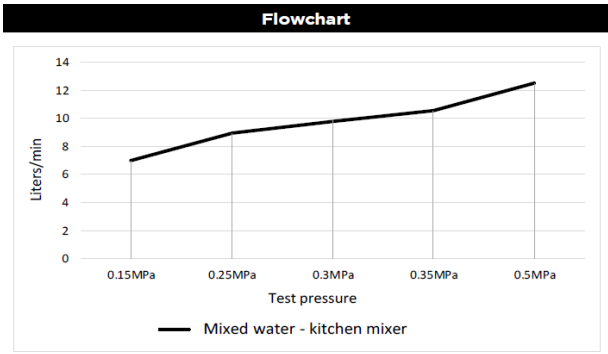
## SPECIFICATIONS



## TOLERANCES



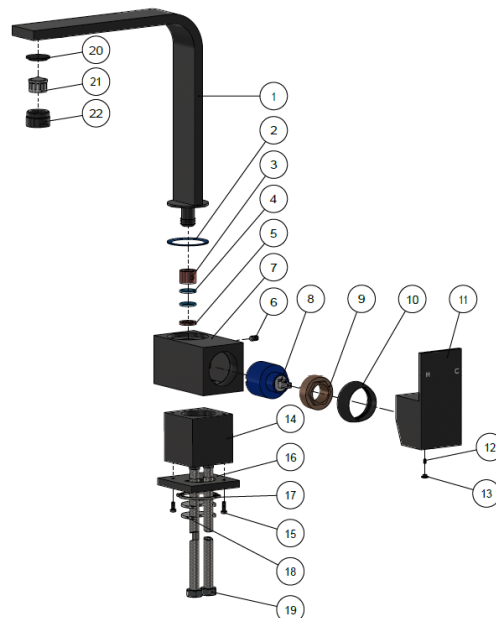
## FLOW RATE GRAPH



## CREDENTIALS

- Watermark AS/NZS3718WMKA25013
- 4-star WELS rated
- 7.5 litres p/minute
- WELS registration No: T37610

## EXPLODED VIEW



No.	Part Name
1	Spout
2	Wear-resisting ring
3	Wearing ring
4	O-ring
5	Rubber ring
6	Screw
7	Body
8	D35 Cartridge
9	Nut
10	Decor Cover
11	Handle
12	Screw
13	Decor Knob
14	Base
15	Screw
16	Base
17	Rubber ring
18	Horseshoes Accessories
19	Inlet Hose
20	Flat Washer
21	Aerator
22	Aerator Shell